

# Converting Colors

Android(4291072877)

Have a look what the booklet for  
Android(4291072877) contains.

<b>Android(4291072877)</b> .....	3
<b><i>Conversions</i></b> .....	4
<b><i>Details</i></b> .....	6
<b><i>Harmonies</i></b> .....	11
<b><i>Previews</i></b> .....	23
<b><i>Color Blindness Simulation</i></b> .....	26
<b><i>CSS Examples</i></b> .....	29

# **Color**

**Android(4291072877)**

# Conversions

## Conversions Part 1

Format	Color
Hex	C4936D
RGB	196, 147, 109
RGB Percent	77%, 58%, 43%
CMY	0.2314, 0.4235, 0.5725
CMYK	0.00, 0.25, 0.44, 0.23
HSL	26°, 42%, 60%
HSV	26°, 44%, 77%
XYZ	35.9590, 33.7073, 19.0789
YIQ	157.3190, 41.4020, -1.4300

# Conversions

## Conversions Part 2

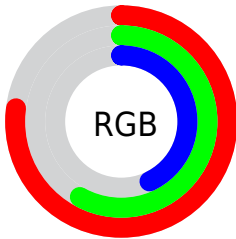
<b>Format</b>	<b>Color</b>
<a href="#">RYB</a>	<a href="#">196, 176, 109</a>
Decimal	<a href="#">12882797</a>
CIELab	<a href="#">64.73, 13.65, 27.27</a>
CIElCh	<a href="#">65, 30.499, 63.406</a>
Yxy	<a href="#">33.7073, 0.4052, 0.3798</a>
Android (android.graphics.Color)	<a href="#">4291072877 (0xFFC4936D)</a>
YUV	<a href="#">157.3190, -23.8213, 33.9232</a>
Hunter-Lab	<a href="#">58.0580, 8.9548, 21.1568</a>

# Details

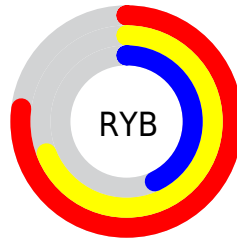
The Android color **4291072877** is a light color, and the websafe version is hex **CC9966**. A complement of this color would be **4285374148**, and the grayscale version is **4288585374**.

A 20% lighter version of the original color is **4294887841**, and **4287389757** is the 20% darker color. If you saturate the color by 10%, you get **4291070041**, and if you desaturate by 10%, it is **4291075713**.

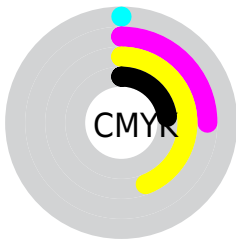
# Distribution



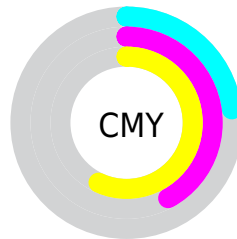
- Red (77%)
- Green (58%)
- Blue (43%)



- Red (77%)
- Yellow (69%)
- Blue (43%)



- Cyan (0%)
- Magenta (25%)
- Yellow (44%)
- Black (23%)



- Cyan (23%)
- Magenta (42%)
- Yellow (57%)

# Brightness & Saturation Gradients

These gradients show how the Android color 4291072877 changes by changing the brightness by 10 percent. The first figure shows a shift by +10% for each color and the second figure -10%.

Similar to the brightness gradients but the following saturation gradients show a change of the Android color 4291072877 by changing the saturation by 10% instead.





4291072877



4291072877

4294967295



4289231188



4294887841



4287389757



4294960572



4285614374



4294967256



4283904529



4294967284



4282260480



4280616448



4278190080



4291072877



4291072877



4291070041



4291075713

■ 4291067206

■ 4291078548

■ 4291064370

■ 4291081384

■ 4291061535

■ 4291084219

■ 4291058699

■ 4291087055

■ 4291057152

■ 4291089891

■ 4291092726

■ 4291095551

■ 4291098367

# Harmonies

## Analogous

The Analogous color harmony consists of three colors that are next to each other on the color wheel.



4291922816



4291072877



4289567846

# Triad

The Triadic color harmony groups three colors that are evenly spaced from another and form a triangle on the color wheel.



4291072877



4283477151



4289041867

# Complementary

The Complementary color scheme is a pair of colors which are on the opposite of each other on the color wheel.



4291072877



4285374148

# Split Complementary

Split-complementary colors differ from the complementary color scheme. The scheme consists of three colors, the original color and two neighbors of the complement color.



4286422995



4291072877



4282428346

# Square

The Square scheme is like the rectangle color scheme, but the four colors are evenly spaced on the color wheel.



4291072877



4285508228



4283737805



4290940086

# Rectangle

The Rectangle color scheme consists of four colors that form a rectangle on the color wheel.



4291072877



4288324202



4283737805



4288190671

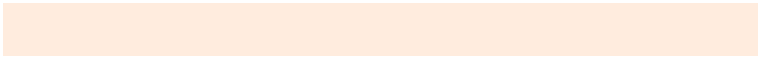


# Sweetspot

The Sweet Spot groups the original color and five complimentary colors.



4291072877



4294962398



4291063198



4286608491



4278190080



4286611584



# Same Dimension

The Same Dimension uses a secret algorithm to generate beautiful new colors.



4291072877



4294947704



4291083885



4284570455



4288759296



4280356352

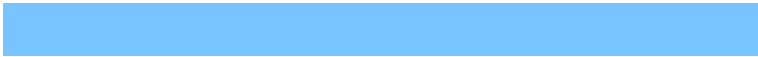


# Inverse Universe

The Inverse Universe completely reimagines the original color for something new.



4285374148



4286104831



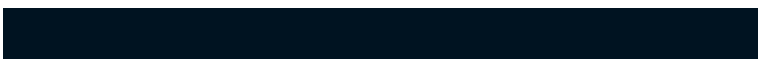
4285363140



4283915617



4278213281

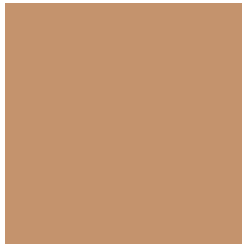


4278194977



# Previews

## White Background



This preview shows how the Android color 4291072877 looks on a white background.

## Color Contrast Check

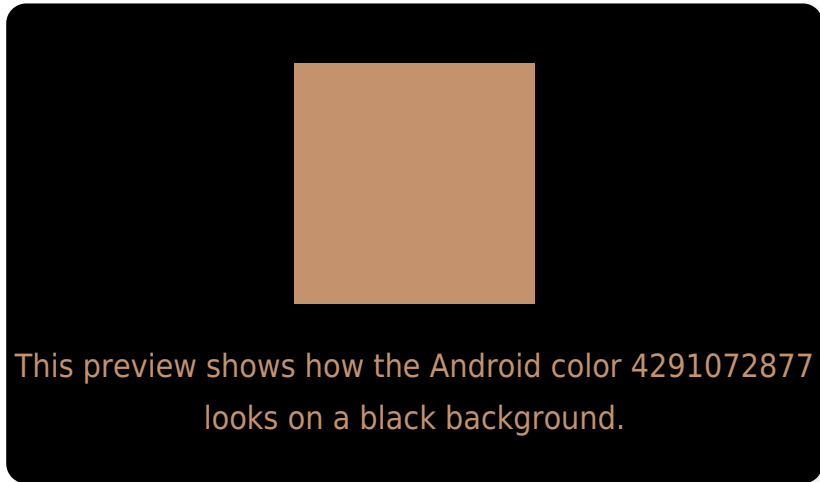
Large Text (above 18pt) WCAG AA × Fail

Any Text WCAG AA × Fail

Large Text (above 18pt) WCAG AAA × Fail

Any Text WCAG AAA × Fail

# Black Background



## Color Contrast Check

Large Text (above 18pt) WCAG AA ✓ Pass

Any Text WCAG AA ✓ Pass

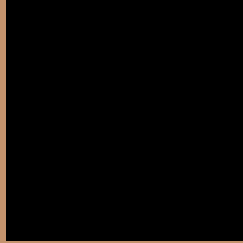
Large Text (above 18pt) WCAG AAA ✓ Pass

Any Text WCAG AAA ✓ Pass

If you want to check with other color combinations, try the [Color Contrast Checker](#).



# Android 4291072877 Background



This preview shows how black text looks on a background with the Android color 4291072877.



This preview shows how white text looks on a background with the Android color 4291072877.

# Color Blindness Simulation

Color vision deficiency is a very complex topic, and I could not describe the different causes any better than Wikipedia does, so if you want to learn more, you should check out their [article about color blindness](#).

## Dichromacy





**Tritanopia**  
4291333528

# Trichromacy



**Original Color**  
4291072877

**Protanomaly**  
4289960304

**Deuteranomaly**  
4290745964

**Tritanomaly**  
4291268488

# Monochromacy



**Original Color**  
4291072877

**Achromatopsia**  
4288519581

**Achromatomaly**  
4289436044

# CSS Examples

## Text

The CSS property to change the color of the text to Android 4291072877 is called "color". The color property can be set on classes, ids or directly on the HTML element.

This example shows how text in the color `rgb(196, 147, 109)` looks like.

```
.text, #text, p{  
    color:rgb(196, 147, 109)  
}
```

If you want to add a text shadow in that color use the text-shadow property, you can generate a text shadow directly with our [CSS Text Shadow Generator](#).

Here you see how black text with a 4 pixel rgb(196, 147, 109) colored shadow looks like.

```
.shadow{ text-shadow: 4px 4px 2px rgb(196, 147, 109) }
```

## Border

The CSS property to change the border of an element to Android 4291072877 is called "border". The border property can be set on classes, ids or directly on the HTML element.

This example shows the color as border, it can be applied via the CSS property "border" or "border-color".

```
.border, #border, table{ border:4px solid rgb(196, 147, 109) }
```

If only the border color should be changed use the property `border-color`.

```
.border{ border-color:rgb(196, 147, 109) }
```

If you want to add a box shadow in that color use:

Here you see how a box with a 4 pixel `rgb(196, 147, 109)` colored shadow looks like.

```
.boxshadow{ -moz-box-shadow:4px 4px 4px  
4px rgb(196, 147, 109); -webkit-box-  
shadow:4px 4px 4px 4px rgb(196, 147, 109);  
box-shadow:4px 4px 4px 4px rgb(196, 147,  
109) }
```

# Background

The CSS property to change the background color of an element to Android 4291072877 is called "background". The background property can be set on classes, ids or directly on the HTML element.

```
.background, #background, body{  
background: rgb(196, 147, 109) }
```

If only the background color should be changed can be used:

```
.background{ background-color: rgb(196,  
147, 109) }
```

This example shows the color as background, it is applied via the CSS property "background".

To optimize and compress your CSS code, you can use our [online CSS compressor and optimizer](#) based on csstidy. If you want to create a linear or radial gradient as background or border, check our [CSS Gradient Generator](#).



Hey! You found this booklet interesting? Support Converting Colors with the new Membership Option!

The pro membership hides all ads, plus gives you double the colors in the color bucket, and more awesome pro features!

**[Learn more, Memberships starting at \\$2.50/m!](#)**

**Follow me  
on Twitter!**

@ConvertingColor