

Converting Colors

Android(4291075689)

Have a look what the booklet for
Android(4291075689) contains.

Android(4291075689)	3
<i>Conversions</i>	4
<i>Details</i>	6
<i>Harmonies</i>	11
<i>Previews</i>	23
<i>Color Blindness Simulation</i>	26
<i>CSS Examples</i>	29

Color

Android(4291075689)

Conversions

Conversions Part 1

Format	Color
Hex	C49E69
RGB	196, 158, 105
RGB Percent	77%, 62%, 41%
CMY	0.2314, 0.3804, 0.5882
CMYK	0.00, 0.19, 0.46, 0.23
HSL	35°, 44%, 59%
HSV	35°, 46%, 77%
XYZ	37.5416, 37.2094, 18.5681
YIQ	163.3200, 39.6610, -8.4270

Conversions

Conversions Part 2

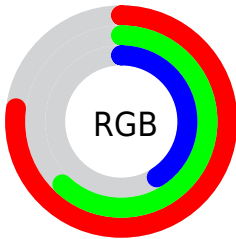
Format	Color
RYB	170, 196, 105
Decimal	12885609
CIELab	67.43, 7.23, 32.94
CIELCh	67, 33.726, 77.627
Yxy	37.2094, 0.4023, 0.3987
Android (android.graphics.Color)	4291075689 (0xFFC49E69)
YUV	163.3200, -28.7518, 28.6604
Hunter-Lab	60.9995, 3.1071, 24.6519

Details

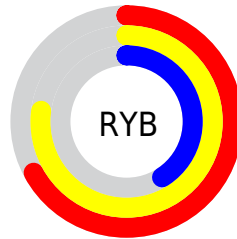
The Android color `4291075689` is a light color, and the websafe version is hex `CC9966`. A complement of this color would be `4285108164`, and the grayscale version is `4288980132`.

A 20% lighter version of the original color is `4294890909`, and `4287392568` is the 20% darker color. If you saturate the color by 10%, you get `4291073621`, and if you desaturate by 10%, it is `4291077757`.

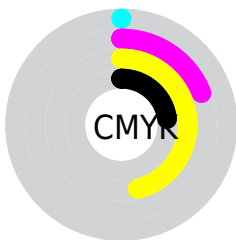
Distribution



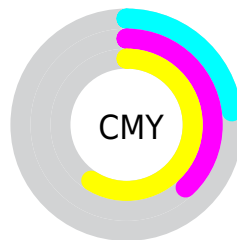
- Red (77%)
- Green (62%)
- Blue (41%)



- Red (67%)
- Yellow (77%)
- Blue (41%)



- Cyan (0%)
- Magenta (19%)
- Yellow (46%)
- Black (23%)



- Cyan (23%)
- Magenta (38%)
- Yellow (59%)

Brightness & Saturation Gradients

These gradients show how the Android color 4291075689 changes by changing the brightness by 10 percent. The first figure shows a shift by +10% for each color and the second figure -10%.

Similar to the brightness gradients but the following saturation gradients show a change of the Android color 4291075689 by changing the saturation by 10% instead.



4291075689



4291075689

4294967295



4289234000



4294890909



4287392568



4294963640



4285616929



4294967252



4283907082



4294967280



4282263040



4280619520



4278190080



4291075689



4291075689



4291073621



4291077757

4291071554

4291079824

4291069230

4291082148

4291067163

4291084215

4291065095

4291086283

4291064320

4291088351

4291090418

4291092479

4291094783

Harmonies

Analogous

The Analogous color harmony consists of three colors that are next to each other on the color wheel.



4292449401



4291075689



4289177706

Triad

The Triadic color harmony groups three colors that are evenly spaced from another and form a triangle on the color wheel.



4291075689



4282168758



4290680525

Complementary

The Complementary color scheme is a pair of colors which are on the opposite of each other on the color wheel.



4291075689



4285108164

Split Complementary

Split-complementary colors differ from the complementary color scheme. The scheme consists of three colors, the original color and two neighbors of the complement color.



4288061918



4291075689



4282102480

Square

The Square scheme is like the rectangle color scheme, but the four colors are evenly spaced on the color wheel.



4291075689



4284462230



4284853215



4292382386

Rectangle

The Rectangle color scheme consists of four colors that form a rectangle on the color wheel.



4291075689



4287671667



4284853215



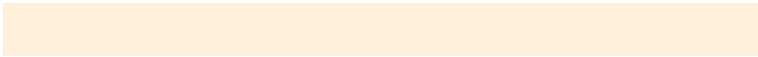
4289895124

Sweetspot

The Sweet Spot groups the original color and five complimentary colors.



4291075689



4294963419



4291062160



4286609002



4278190080



4286611584

Same Dimension

The Same Dimension uses a secret algorithm to generate beautiful new colors.



4291075689



4294951792



4290692201



4284570967



4288765440



4280357632

Inverse Universe

The Inverse Universe completely reimagines the original color for something new.



4285108164



4285574399



4285491652



4283915105



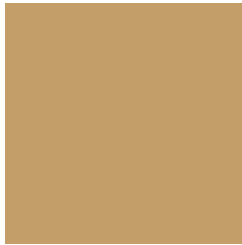
4278207393



4278193697

Previews

White Background



This preview shows how the Android color 4291075689 looks on a white background.

Color Contrast Check

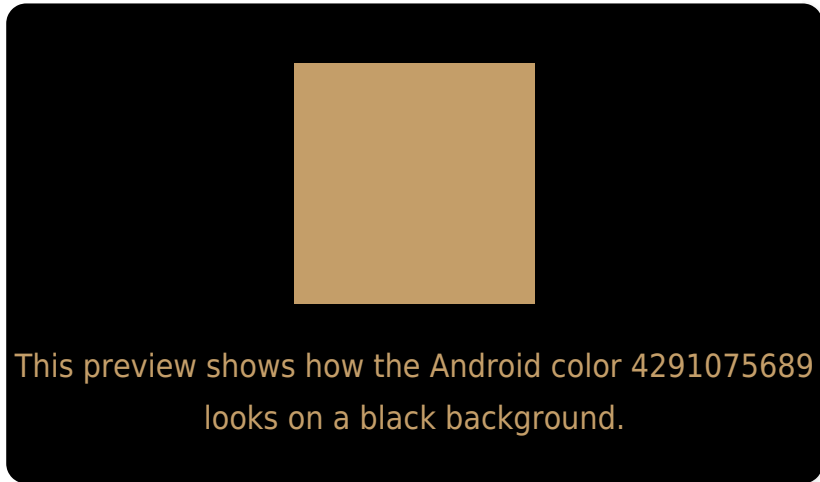
Large Text (above 18pt) WCAG AA × Fail

Any Text WCAG AA × Fail

Large Text (above 18pt) WCAG AAA × Fail

Any Text WCAG AAA × Fail

Black Background



Color Contrast Check

Large Text (above 18pt) WCAG AA ✓ Pass

Any Text WCAG AA ✓ Pass

Large Text (above 18pt) WCAG AAA ✓ Pass

Any Text WCAG AAA ✓ Pass

If you want to check with other color combinations, try the [Color Contrast Checker](#).

Android 4291075689 Background



This preview shows how black text looks on a background with the Android color 4291075689.

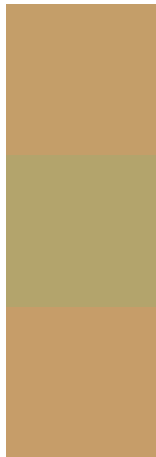


This preview shows how white text looks on a background with the Android color 4291075689.

Color Blindness Simulation

Color vision deficiency is a very complex topic, and I could not describe the different causes any better than Wikipedia does, so if you want to learn more, you should check out their [article about color blindness](#).


Dichromacy



Original Color
4291075689

Protanopia
4289963116

Deuteranopia
4291206505



Tritanopia
4291401634

Trichromacy



Original Color
4291075689

Protanomaly
4290355819

Deuteranomaly
4291140969

Tritanomaly
4291271309

Monochromacy



Original Color
4291075689

Achromatopsia
4288914339

Achromatomaly
4289700238

CSS Examples

Text

The CSS property to change the color of the text to Android 4291075689 is called "color". The color property can be set on classes, ids or directly on the HTML element.

This example shows how text in the color `rgb(196, 158, 105)` looks like.

```
.text, #text, p{  
    color:rgb(196, 158, 105)  
}
```

If you want to add a text shadow in that color use the text-shadow property, you can generate a text shadow directly with our [CSS Text Shadow Generator](#).

Here you see how black text with a 4 pixel rgb(196, 158, 105) colored shadow looks like.

```
.shadow{ text-shadow: 4px 4px 2px rgb(196, 158, 105) }
```

Border

The CSS property to change the border of an element to Android 4291075689 is called "border". The border property can be set on classes, ids or directly on the HTML element.

This example shows the color as border, it can be applied via the CSS property "border" or "border-color".

```
.border, #border, table{ border:4px solid rgb(196, 158, 105) }
```

If only the border color should be changed use the property `border-color`.

```
.border{ border-color:rgb(196, 158, 105) }
```

If you want to add a box shadow in that color use:

Here you see how a box with a 4 pixel `rgb(196, 158, 105)` colored shadow looks like.

```
.boxshadow{ -moz-box-shadow:4px 4px 4px  
4px rgb(196, 158, 105); -webkit-box-  
shadow:4px 4px 4px 4px rgb(196, 158, 105);  
box-shadow:4px 4px 4px 4px rgb(196, 158,  
105) }
```

Background

The CSS property to change the background color of an element to Android 4291075689 is called "background". The background property can be set on classes, ids or directly on the HTML element.

```
.background, #background, body{  
background: rgb(196, 158, 105) }
```

If only the background color should be changed can be used:

```
.background{ background-color: rgb(196,  
158, 105) }
```

This example shows the color as background, it is applied via the CSS property "background".

To optimize and compress your CSS code, you can use our [online CSS compressor and optimizer](#) based on csstidy. If you want to create a linear or radial gradient as background or border, check our [CSS Gradient Generator](#).

Hey! You found this booklet interesting? Support Converting Colors with the new Membership Option!

The pro membership hides all ads, plus gives you double the colors in the color bucket, and more awesome pro features!

[Learn more, Memberships starting at \\$2.50/m!](#)

**Follow me
on Twitter!**

@ConvertingColor