

Converting Colors

Android(4291075737)

Have a look what the booklet for
Android(4291075737) contains.

| | |
|--|----|
| Android(4291075737) | 3 |
| <i>Conversions</i> | 4 |
| <i>Details</i> | 6 |
| <i>Harmonies</i> | 11 |
| <i>Previews</i> | 23 |
| <i>Color Blindness Simulation</i> | 26 |
| <i>CSS Examples</i> | 29 |

Color

Android(4291075737)

Conversions

Conversions Part 1

| Format | Color |
|---------------|---------------------------|
| Hex | C49E99 |
| RGB | 196, 158, 153 |
| RGB Percent | 77%, 62%, 60% |
| CMY | 0.2314, 0.3804, 0.4000 |
| CMYK | 0.00, 0.19, 0.22, 0.23 |
| HSL | 7°, 27%, 68% |
| HSV | 7°, 22%, 77% |
| XYZ | 40.7416, 38.4894, 35.4189 |
| YIQ | 168.7920, 24.2530, 6.5010 |

Conversions

Conversions Part 2

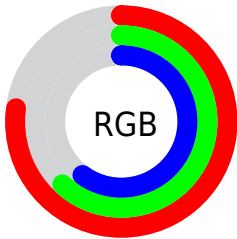
| Format | Color |
|-------------------------------------|--|
| RYB | 196, 159, 153 |
| Decimal | 12885657 |
| CIELab | 68.38, 13.29, 7.93 |
| CIELCh | 68, 15.478, 30.838 |
| Yxy | 38.4894, 0.3554, 0.3357 |
| Android (android.graphics.Color) | 4291075737 (0xFFC49E99) |
| YUV | 168.7920, -7.7855, 23.8614 |
| Hunter-Lab | 62.0398, 8.6514, 9.5789 |

Details

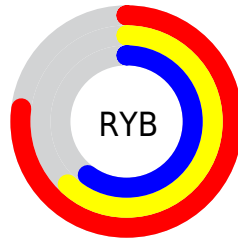
The Android color `4291075737` is a light color, and the websafe version is hex `CC9999`. A complement of this color would be `4288266180`, and the grayscale version is `4289309097`.

A 20% lighter version of the original color is `4294825423`, and `4287523686` is the 20% darker color. If you saturate the color by 10%, you get `4291071365`, and if you desaturate by 10%, it is `4291080109`.

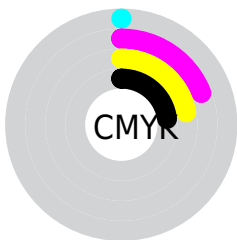
Distribution



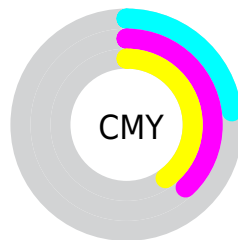
- Red (77%)
- Green (62%)
- Blue (60%)



- Red (77%)
- Yellow (62%)
- Blue (60%)



- Cyan (0%)
- Magenta (19%)
- Yellow (22%)
- Black (23%)



- Cyan (23%)
- Magenta (38%)
- Yellow (40%)

Brightness & Saturation Gradients

These gradients show how the Android color 4291075737 changes by changing the brightness by 10 percent. The first figure shows a shift by +10% for each color and the second figure -10%.

Similar to the brightness gradients but the following saturation gradients show a change of the Android color 4291075737 by changing the saturation by 10% instead.

 4291075737

 4291075737

4294967295

 4289234047

 4294825423

 4287523686

 4294963692

 4285813326

 4284103479

 4282524962

 4281012236

 4279238656

 4278190080

 4291075737

 4291075737

 4291071365

 4291080109

 4291066738

 4291084736

 4291062366

 4291089108


 4291057995

 4291093479

 4291053367

 4291098107

 4291048995

 4291100671

 4291044624

 4291041024

Harmonies

Analogous

The Analogous color harmony consists of three colors that are next to each other on the color wheel.



4291009959



4291075737



4290683279

Triad

The Triadic color harmony groups three colors that are evenly spaced from another and form a triangle on the color wheel.



4291075737



4287802777



4288194754

Complementary

The Complementary color scheme is a pair of colors which are on the opposite of each other on the color wheel.



4291075737



4288266180

Split Complementary

Split-complementary colors differ from the complementary color scheme. The scheme consists of three colors, the original color and two neighbors of the complement color.



4287212735



4291075737



4287016871

Square

The Square scheme is like the rectangle color scheme, but the four colors are evenly spaced on the color wheel.



4291075737



4288850575



4286754484



4289373119

Rectangle

The Rectangle color scheme consists of four colors that form a rectangle on the color wheel.



4291075737



4290159755



4286754484



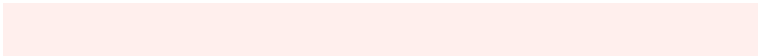
4287801794

Sweetspot

The Sweet Spot groups the original color and five complimentary colors.



4291075737



4294963181



4291074496



4286609013



4278190080



4286611584

Same Dimension

The Same Dimension uses a secret algorithm to generate beautiful new colors.



4291075737



4294952125



4291081113



4284569687



4288746240



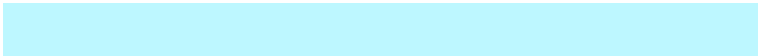
4280353792

Inverse Universe

The Inverse Universe completely reimagines the original color for something new.



4288266180



4290639871



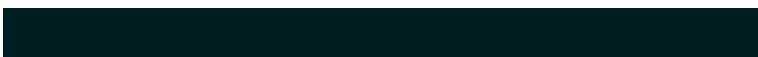
4288260804



4283916385



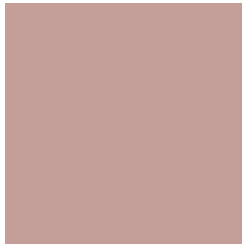
4278226593



4278197537

Previews

White Background



This preview shows how the Android color 4291075737 looks on a white background.

Color Contrast Check

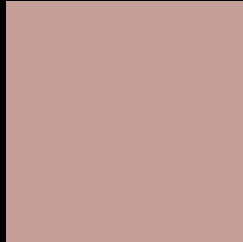
Large Text (above 18pt) WCAG AA × Fail

Any Text WCAG AA × Fail

Large Text (above 18pt) WCAG AAA × Fail

Any Text WCAG AAA × Fail

Black Background



This preview shows how the Android color 4291075737 looks on a black background.

Color Contrast Check

Large Text (above 18pt) WCAG AA ✓ Pass

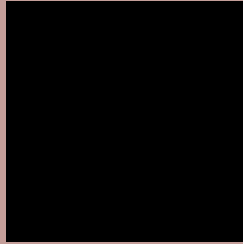
Any Text WCAG AA ✓ Pass

Large Text (above 18pt) WCAG AAA ✓ Pass

Any Text WCAG AAA ✓ Pass

If you want to check with other color combinations, try the [Color Contrast Checker](#).

Android 4291075737 Background



This preview shows how black text looks on a background with the Android color 4291075737.



This preview shows how white text looks on a background with the Android color 4291075737.

Color Blindness Simulation

Color vision deficiency is a very complex topic, and I could not describe the different causes any better than Wikipedia does, so if you want to learn more, you should check out their [article about color blindness](#).


Dichromacy



Original Color
4291075737

Protanopia
4289504925

Deuteranopia
4290552216



Tritanopia
4291206312

Trichromacy



Original Color
4291075737

Protanomaly
4290093980

Deuteranomaly
4290748568

Tritanomaly
4291141027

Monochromacy



Original Color
4291075737

Achromatopsia
4289309097

Achromatomaly
4289963427

CSS Examples

Text

The CSS property to change the color of the text to Android 4291075737 is called "color". The color property can be set on classes, ids or directly on the HTML element.

This example shows how text in the color `rgb(196, 158, 153)` looks like.

```
.text, #text, p{  
    color:rgb(196, 158, 153)  
}
```

If you want to add a text shadow in that color use the text-shadow property, you can generate a text shadow directly with our [CSS Text Shadow Generator](#).

Here you see how black text with a 4 pixel rgb(196, 158, 153) colored shadow looks like.

```
.shadow{ text-shadow: 4px 4px 2px rgb(196, 158, 153) }
```

Border

The CSS property to change the border of an element to Android 4291075737 is called "border". The border property can be set on classes, ids or directly on the HTML element.

This example shows the color as border, it can be applied via the CSS property "border" or "border-color".

```
.border, #border, table{ border:4px solid rgb(196, 158, 153) }
```

If only the border color should be changed use the property `border-color`.

```
.border{ border-color:rgb(196, 158, 153) }
```

If you want to add a box shadow in that color use:

Here you see how a box with a 4 pixel `rgb(196, 158, 153)` colored shadow looks like.

```
.boxshadow{ -moz-box-shadow:4px 4px 4px  
4px rgb(196, 158, 153); -webkit-box-  
shadow:4px 4px 4px 4px rgb(196, 158, 153);  
box-shadow:4px 4px 4px 4px rgb(196, 158,  
153) }
```

Background

The CSS property to change the background color of an element to Android 4291075737 is called "background". The background property can be set on classes, ids or directly on the HTML element.

```
.background, #background, body{  
background: rgb(196, 158, 153) }
```

If only the background color should be changed can be used:

```
.background{ background-color: rgb(196,  
158, 153) }
```

This example shows the color as background, it is applied via the CSS property "background".

To optimize and compress your CSS code, you can use our [online CSS compressor and optimizer](#) based on csstidy. If you want to create a linear or radial gradient as background or border, check our [CSS Gradient Generator](#).

Hey! You found this booklet interesting? Support Converting Colors with the new Membership Option!

The pro membership hides all ads, plus gives you double the colors in the color bucket, and more awesome pro features!

[Learn more, Memberships starting at \\$2.50/m!](#)

**Follow me
on Twitter!**

@ConvertingColor