

# Converting Colors

Android(4291077796)

Have a look what the booklet for  
Android(4291077796) contains.

<b>Android(4291077796)</b> .....	3
<i><b>Conversions</b></i> .....	4
<i><b>Details</b></i> .....	6
<i><b>Harmonies</b></i> .....	11
<i><b>Previews</b></i> .....	23
<i><b>Color Blindness Simulation</b></i> .....	26
<i><b>CSS Examples</b></i> .....	29

# **Color**

**Android(4291077796)**

# Conversions

## Conversions Part 1

<b>Format</b>	<b>Color</b>
Hex	C4A6A4
RGB	196, 166, 164
RGB Percent	77%, 65%, 64%
CMY	0.2314, 0.3490, 0.3569
CMYK	0.00, 0.15, 0.16, 0.23
HSL	4°, 21%, 71%
HSV	4°, 16%, 77%
XYZ	43.1020, 41.6885, 40.8969
YIQ	174.7420, 18.5220, 5.7380

# Conversions

## Conversions Part 2

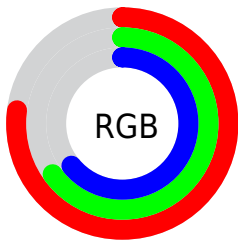
<b>Format</b>	<b>Color</b>
<b>R<sub>YB</sub></b>	196, 166, 164
Decimal	12887716
CIE <sub>Lab</sub>	70.66, 10.62, 5.10
CIE <sub>LCh</sub>	71, 11.787, 25.659
Yxy	41.6885, 0.3429, 0.3317
Android (android.graphics.Color)	4291077796 (0xFFC4A6A4)
YUV	174.7420, -5.2958, 18.6433
Hunter-Lab	64.5667, 6.1675, 7.6420

# Details

The Android color `4291077796` is a light color, and the websafe version is hex `CC9999`. A complement of this color would be `4288987844`, and the grayscale version is `4289703855`.

A 20% lighter version of the original color is `4294827483`, and `4287525488` is the 20% darker color. If you saturate the color by 10%, you get `4291073168`, and if you desaturate by 10%, it is `4291082424`.

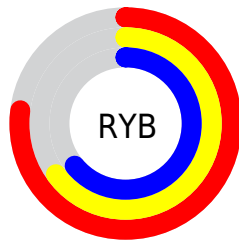
# Distribution



Red (77%)

Green (65%)

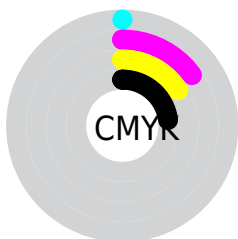
Blue (64%)



Red (77%)

Yellow (65%)

Blue (64%)

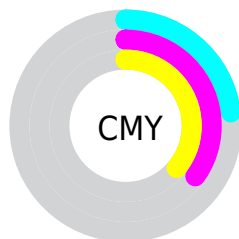


Cyan (0%)

Magenta (15%)

Yellow (16%)

Black (23%)



Cyan (23%)

Magenta (35%)

Yellow (36%)

# Brightness & Saturation Gradients

These gradients show how the Android color 4291077796 changes by changing the brightness by 10 percent. The first figure shows a shift by +10% for each color and the second figure -10%.

Similar to the brightness gradients but the following saturation gradients show a change of the Android color 4291077796 by changing the saturation by 10% instead.



 4291077796

 4291077796

4294967295

 4289301642

 4294827483

 4287525488

 4294966007

 4285815384

 4284170817

 4282592299

 4281079574

 4279828480

 4278190080

 4291077796

 4291077796

 4291073168

 4291082424

 4291068285

 4291087307

 4291063657

 4291091935

 4291059030

 4291096818


 4291054146

 4291100671

 4291049518

 4291044635

 4291040007

 4291038208

# Harmonies

## Analogous

The Analogous color harmony consists of three colors that are next to each other on the color wheel.



4290946735



4291077796



4290816156

# Triad

The Triadic color harmony groups three colors that are evenly spaced from another and form a triangle on the color wheel.



4291077796



4288656032



4288720578

# Complementary

The Complementary color scheme is a pair of colors which are on the opposite of each other on the color wheel.



4291077796



4288987844

# Split Complementary

Split-complementary colors differ from the complementary color scheme. The scheme consists of three colors, the original color and two neighbors of the complement color.



4288000446



4291077796



4288066475

# Square

The Square scheme is like the rectangle color scheme, but the four colors are evenly spaced on the color wheel.



4291077796



4289507225



4287804342



4289571776

# Rectangle

The Rectangle color scheme consists of four colors that form a rectangle on the color wheel.



4291077796



4290488984



4287804342



4288458689

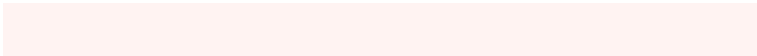


# Sweetspot

The Sweet Spot groups the original color and five complimentary colors.



4291077796



4294964210



4291077314



4286609528



4278190080



4286611584



# Same Dimension

The Same Dimension uses a secret algorithm to generate beautiful new colors.



4291077796



4294954956



4291081892



4284569687



4288743936



4280353280



# Inverse Universe

The Inverse Universe completely reimagines the original color for something new.



4288987844



4291624191



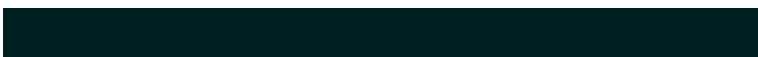
4288983748



4283916385



4278228897



4278198049



# Previews

## White Background



This preview shows how the Android color 4291077796 looks on a white background.

## Color Contrast Check

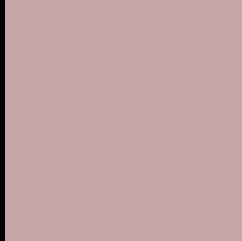
Large Text (above 18pt) WCAG AA × Fail

Any Text WCAG AA × Fail

Large Text (above 18pt) WCAG AAA × Fail

Any Text WCAG AAA × Fail

# Black Background



This preview shows how the Android color 4291077796 looks on a black background.

## Color Contrast Check

Large Text (above 18pt) WCAG AA ✓ Pass

Any Text WCAG AA ✓ Pass

Large Text (above 18pt) WCAG AAA ✓ Pass

Any Text WCAG AAA ✓ Pass

If you want to check with other color combinations, try the [Color Contrast Checker](#).



# Android 4291077796 Background



This preview shows how black text looks on a background with the Android color 4291077796.




This preview shows how white text looks on a background with the Android color 4291077796.

# Color Blindness Simulation

Color vision deficiency is a very complex topic, and I could not describe the different causes any better than Wikipedia does, so if you want to learn more, you should check out their [article about color blindness](#).

## Dichromacy





**Tritanopia**  
4291208369

# Trichromacy



**Original Color**  
4291077796

**Protanomaly**  
4290292390

**Deuteranomaly**  
4290946980

**Tritanomaly**  
4291143084

# Monochromacy



**Original Color**  
4291077796

**Achromatopsia**  
4289703855

**Achromatomaly**  
4290227371

# CSS Examples

## Text

The CSS property to change the color of the text to Android 4291077796 is called "color". The color property can be set on classes, ids or directly on the HTML element.

This example shows how text in the color `rgb(196, 166, 164)` looks like.

```
.text, #text, p{  
    color:rgb(196, 166, 164)  
}
```

If you want to add a text shadow in that color use the text-shadow property, you can generate a text shadow directly with our [CSS Text Shadow Generator](#).

Here you see how black text with a 4 pixel rgb(196, 166, 164) colored shadow looks like.

```
.shadow{ text-shadow: 4px 4px 2px rgb(196, 166, 164) }
```

## Border

The CSS property to change the border of an element to Android 4291077796 is called "border". The border property can be set on classes, ids or directly on the HTML element.

This example shows the color as border, it can be applied via the CSS property "border" or "border-color".

```
.border, #border, table{ border:4px solid rgb(196, 166, 164) }
```

If only the border color should be changed use the property `border-color`.

```
.border{ border-color:rgb(196, 166, 164) }
```

If you want to add a box shadow in that color use:

Here you see how a box with a 4 pixel `rgb(196, 166, 164)` colored shadow looks like.

```
.boxshadow{ -moz-box-shadow:4px 4px 4px  
4px rgb(196, 166, 164); -webkit-box-  
shadow:4px 4px 4px 4px rgb(196, 166, 164);  
box-shadow:4px 4px 4px 4px rgb(196, 166,  
164) }
```

# Background

The CSS property to change the background color of an element to Android 4291077796 is called "background". The background property can be set on classes, ids or directly on the HTML element.

```
.background, #background, body{  
background: rgb(196, 166, 164) }
```

If only the background color should be changed can be used:

```
.background{ background-color: rgb(196,  
166, 164) }
```

This example shows the color as background, it is applied via the CSS property "background".

To optimize and compress your CSS code, you can use our [online CSS compressor and optimizer](#) based on csstidy. If you want to create a linear or radial gradient as background or border, check our [CSS Gradient Generator](#).



Hey! You found this booklet interesting? Support Converting Colors with the new Membership Option!

The pro membership hides all ads, plus gives you double the colors in the color bucket, and more awesome pro features!

**[Learn more, Memberships starting at \\$2.50/m!](#)**

**Follow me  
on Twitter!**

@ConvertingColor