

Converting Colors

Android(4291080379)

Have a look what the booklet for
Android(4291080379) contains.

Android(4291080379)	3
<i>Conversions</i>	4
<i>Details</i>	6
<i>Harmonies</i>	11
<i>Previews</i>	23
<i>Color Blindness Simulation</i>	26
<i>CSS Examples</i>	29

Color

Android(4291080379)

Conversions

Conversions Part 1

Format	Color
Hex	C4B0BB
RGB	196, 176, 187
RGB Percent	77%, 69%, 73%
CMY	0.2314, 0.3098, 0.2667
CMYK	0.00, 0.10, 0.05, 0.23
HSL	327°, 14%, 73%
HSV	327°, 10%, 77%
XYZ	47.2599, 46.3743, 53.4740
YIQ	183.2340, 8.3890, 7.6610

Conversions

Conversions Part 2

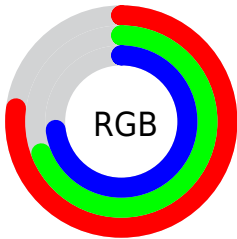
Format	Color
RYB	196, 176, 187
Decimal	12890299
CIELab	73.79, 9.10, -2.99
CIElCh	74, 9.577, 341.823
Yxy	46.3743, 0.3213, 0.3152
Android (android.graphics.Color)	4291080379 (0xFFC4B0BB)
YUV	183.2340, 1.8566, 11.1958
Hunter-Lab	68.0987, 4.7049, 1.1120

Details

The Android color `4291080379` is a light color, and the websafe version is hex `CCCCCC`. A complement of this color would be `4289774777`, and the grayscale version is `4290230199`.

A 20% lighter version of the original color is `4294830323`, and `4287527814` is the 20% darker color. If you saturate the color by 10%, you get `4291075250`, and if you desaturate by 10%, it is `4291085508`.

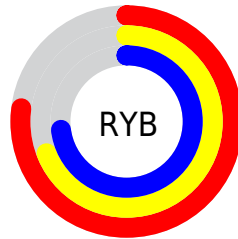
Distribution



Red (77%)

Green (69%)

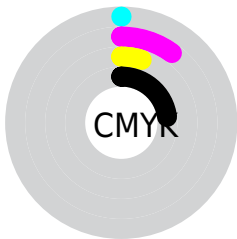
Blue (73%)



Red (77%)

Yellow (69%)

Blue (73%)

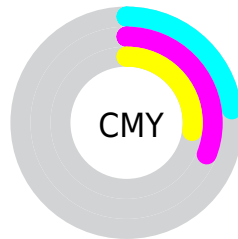


Cyan (0%)

Magenta (10%)

Yellow (5%)

Black (23%)



Cyan (23%)


Magenta (31%)

Yellow (27%)

Brightness & Saturation Gradients

These gradients show how the Android color 4291080379 changes by changing the brightness by 10 percent. The first figure shows a shift by +10% for each color and the second figure -10%.

Similar to the brightness gradients but the following saturation gradients show a change of the Android color 4291080379 by changing the saturation by 10% instead.

 4291080379

 4291080379

4294967295

 4289303968

 4294830323

 4287527814

 4285883245

 4284238676

 4282659901

 4281212711

 4279895827

 4278190080

 4291080379

 4291080379

4291075250

4291085508

4291070377

4291090381

4291065249

4291095509

4291060376

4291100382

4291055247

4291100647

4291050118

4291100656

4291045245

4291100665

4291040116

4291100671

4291035244

Harmonies

Analogous

The Analogous color harmony consists of three colors that are next to each other on the color wheel.



4290491074



4291080379



4291342258

Triad

The Triadic color harmony groups three colors that are evenly spaced from another and form a triangle on the color wheel.



4291080379



4290360996



4288723649

Complementary

The Complementary color scheme is a pair of colors which are on the opposite of each other on the color wheel.



4291080379



4289774777

Split Complementary

Split-complementary colors differ from the complementary color scheme. The scheme consists of three colors, the original color and two neighbors of the complement color.



4288723897



4291080379



4289706152

Square

The Square scheme is like the rectangle color scheme, but the four colors are evenly spaced on the color wheel.



4291080379



4290950053



4289116848



4289116358

Rectangle

The Rectangle color scheme consists of four colors that form a rectangle on the color wheel.



4291080379



4291342508



4289116848



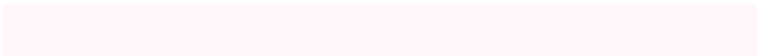
4288723646

Sweetspot

The Sweet Spot groups the original color and five complimentary colors.



4291080379



4294965244



4290359492



4286610045



4278190080



4286611584

Same Dimension

The Same Dimension uses a secret algorithm to generate beautiful new colors.



4291080379



4294959345



4291080369



4284569437



4288741464



4280352786

Inverse Universe

The Inverse Universe completely reimagines the original color for something new.



4291080379



4294959345



4289774787



4284569437



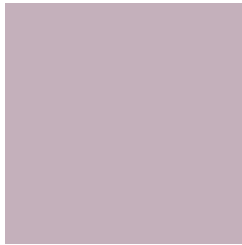
4288741464



4280352786

Previews

White Background



This preview shows how the Android color 4291080379 looks on a white background.

Color Contrast Check

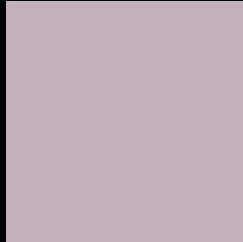
Large Text (above 18pt) WCAG AA × Fail

Any Text WCAG AA × Fail

Large Text (above 18pt) WCAG AAA × Fail

Any Text WCAG AAA × Fail

Black Background



This preview shows how the Android color 4291080379 looks on a black background.

Color Contrast Check

Large Text (above 18pt) WCAG AA ✓ Pass

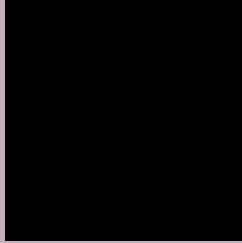
Any Text WCAG AA ✓ Pass

Large Text (above 18pt) WCAG AAA ✓ Pass

Any Text WCAG AAA ✓ Pass

If you want to check with other color combinations, try the [Color Contrast Checker](#).

Android 4291080379 Background



This preview shows how black text looks on a background with the Android color 4291080379.



This preview shows how white text looks on a background with the Android color 4291080379.

Color Blindness Simulation

Color vision deficiency is a very complex topic, and I could not describe the different causes any better than Wikipedia does, so if you want to learn more, you should check out their [article about color blindness](#).


Dichromacy



Original Color
4291080379

Protanopia
4290163902

Deuteranopia
4291080379



Tritanopia
4291080381

Trichromacy



Original Color
4291080379

Protanomaly
4290491325

Deuteranomaly
4291080379

Tritanomaly
4291080380

Monochromacy



Original Color
4291080379

Achromatopsia
4290230199

Achromatomaly
4290557112

CSS Examples

Text

The CSS property to change the color of the text to Android 4291080379 is called "color". The color property can be set on classes, ids or directly on the HTML element.

This example shows how text in the color `rgb(196, 176, 187)` looks like.

```
.text, #text, p{  
    color:rgb(196, 176, 187)  
}
```

If you want to add a text shadow in that color use the text-shadow property, you can generate a text shadow directly with our [CSS Text Shadow Generator](#).

Here you see how black text with a 4 pixel rgb(196, 176, 187) colored shadow looks like.

```
.shadow{ text-shadow: 4px 4px 2px rgb(196, 176, 187) }
```

Border

The CSS property to change the border of an element to Android 4291080379 is called "border". The border property can be set on classes, ids or directly on the HTML element.

This example shows the color as border, it can be applied via the CSS property "border" or "border-color".

```
.border, #border, table{ border:4px solid rgb(196, 176, 187) }
```

If only the border color should be changed use the property `border-color`.

```
.border{ border-color:rgb(196, 176, 187) }
```

If you want to add a box shadow in that color use:

Here you see how a box with a 4 pixel `rgb(196, 176, 187)` colored shadow looks like.

```
.boxshadow{ -moz-box-shadow:4px 4px 4px  
4px rgb(196, 176, 187); -webkit-box-  
shadow:4px 4px 4px 4px rgb(196, 176, 187);  
box-shadow:4px 4px 4px 4px rgb(196, 176,  
187) }
```

Background

The CSS property to change the background color of an element to Android 4291080379 is called "background". The background property can be set on classes, ids or directly on the HTML element.

```
.background, #background, body{  
background: rgb(196, 176, 187) }
```

If only the background color should be changed can be used:

```
.background{ background-color: rgb(196,  
176, 187) }
```

This example shows the color as background, it is applied via the CSS property "background".

To optimize and compress your CSS code, you can use our [online CSS compressor and optimizer](#) based on csstidy. If you want to create a linear or radial gradient as background or border, check our [CSS Gradient Generator](#).

Hey! You found this booklet interesting? Support Converting Colors with the new Membership Option!

The pro membership hides all ads, plus gives you double the colors in the color bucket, and more awesome pro features!

[Learn more, Memberships starting at \\$2.50/m!](#)

**Follow me
on Twitter!**

@ConvertingColor