

# Converting Colors

Android(4291080885)

Have a look what the booklet for  
Android(4291080885) contains.

<b>Android(4291080885)</b> .....	3
<b><i>Conversions</i></b> .....	4
<b><i>Details</i></b> .....	6
<b><i>Harmonies</i></b> .....	11
<b><i>Previews</i></b> .....	23
<b><i>Color Blindness Simulation</i></b> .....	26
<b><i>CSS Examples</i></b> .....	29

# **Color**

**Android(4291080885)**

# Conversions

## Conversions Part 1

Format	Color
Hex	C4B2B5
RGB	196, 178, 181
RGB Percent	77%, 70%, 71%
CMY	0.2314, 0.3020, 0.2902
CMYK	0.00, 0.09, 0.08, 0.23
HSL	350°, 13%, 73%
HSV	350°, 9%, 77%
XYZ	47.0258, 46.9127, 50.2926
YIQ	183.7240, 9.7650, 4.7490

# Conversions

## Conversions Part 2

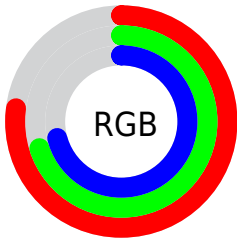
Format	Color
<a href="#">RYB</a>	<a href="#">196, 178, 181</a>
Decimal	<a href="#">12890805</a>
CIELab	<a href="#">74.13, 6.95, 0.80</a>
CIElCh	<a href="#">74, 6.998, 6.586</a>
Yxy	<a href="#">46.9127, 0.3260, 0.3253</a>
Android (android.graphics.Color)	<a href="#">4291080885</a> ( <a href="#">0xFFC4B2B5</a> )
YUV	<a href="#">183.7240, -1.3429, 10.7661</a>
Hunter-Lab	<a href="#">68.4929, 2.6920, 4.4099</a>

# Details

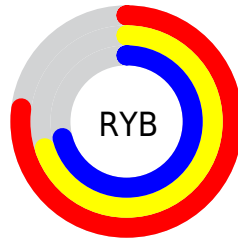
The Android color `4291080885` is a light color, and the websafe version is hex `CCCCCC`. A complement of this color would be `4289905857`, and the grayscale version is `4290295992`.

A 20% lighter version of the original color is `4294830829`, and `4287528320` is the 20% darker color. If you saturate the color by 10%, you get `4291075749`, and if you desaturate by 10%, it is `4291086021`.

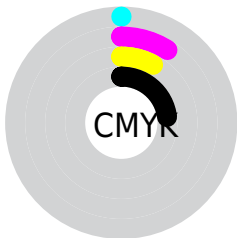
# Distribution



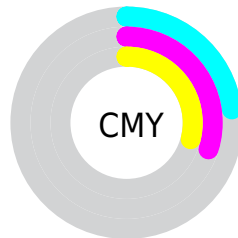
- Red (77%)
- Green (70%)
- Blue (71%)



- Red (77%)
- Yellow (70%)
- Blue (71%)



- Cyan (0%)
- Magenta (9%)
- Yellow (8%)
- Black (23%)




- Cyan (23%)
- Magenta (30%)
- Yellow (29%)

# Brightness & Saturation Gradients

These gradients show how the Android color 4291080885 changes by changing the brightness by 10 percent. The first figure shows a shift by +10% for each color and the second figure -10%.

Similar to the brightness gradients but the following saturation gradients show a change of the Android color 4291080885 by changing the saturation by 10% instead.



 4291080885

 4291080885

4294967295

 4289304474

 4294830829

 4287528320

 4285883495

 4284238927

 4282660408

 4281212963

 4279896589

 4278190080

 4291080885

 4291080885

 4291075749

 4291086021

 4291070868

 4291090902

 4291065732

 4291096038

 4291060852

 4291100662

 4291055715

 4291100671

 4291050579

 4291045699

 4291040562

 4291035682

# Harmonies

## Analogous

The Analogous color harmony consists of three colors that are next to each other on the color wheel.



4290819003



4291080885



4291081135

# Triad

The Triadic color harmony groups three colors that are evenly spaced from another and form a triangle on the color wheel.



4291080885



4289968300



4289444034

# Complementary

The Complementary color scheme is a pair of colors which are on the opposite of each other on the color wheel.



4291080885



4289905857

# Split Complementary

Split-complementary colors differ from the complementary color scheme. The scheme consists of three colors, the original color and two neighbors of the complement color.



4289182398



4291080885



4289510065

# Square

The Square scheme is like the rectangle color scheme, but the four colors are evenly spaced on the color wheel.



4291080885



4290426538



4289182391



4289836739

# Rectangle

The Rectangle color scheme consists of four colors that form a rectangle on the color wheel.



4291080885



4290950316



4289182391



4289313217



# Sweetspot

The Sweet Spot groups the original color and five complimentary colors.



4291080885



4294965241



4290884292



4286610043



4278190080



4286611584



# Same Dimension

The Same Dimension uses a secret algorithm to generate beautiful new colors.



4291080885



4294960104



4291082418



4284569433



4288741403



4280352774



# Inverse Universe

The Inverse Universe completely reimagines the original color for something new.



4291080885



4294960104



4289904324



4284569433



4288741403

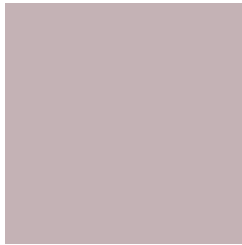


4280352774



# Previews

## White Background



This preview shows how the Android color 4291080885 looks on a white background.

## Color Contrast Check

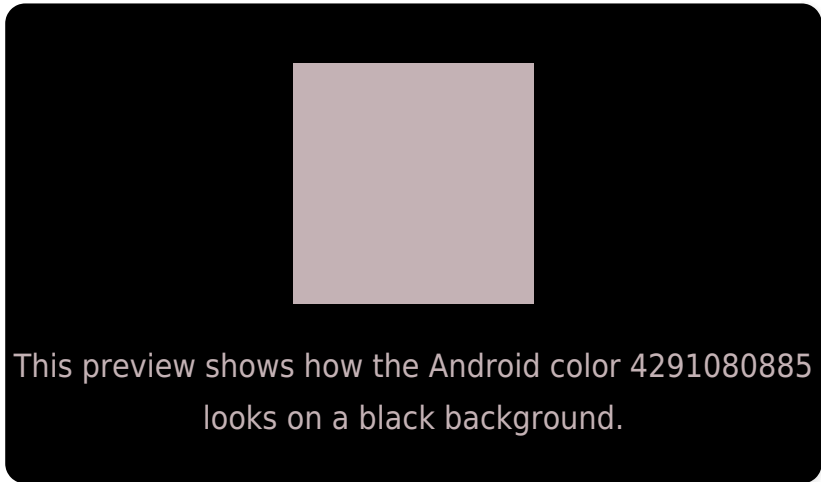
Large Text (above 18pt) WCAG AA × Fail

Any Text WCAG AA × Fail

Large Text (above 18pt) WCAG AAA × Fail

Any Text WCAG AAA × Fail

# Black Background



## Color Contrast Check

Large Text (above 18pt) WCAG AA ✓ Pass

Any Text WCAG AA ✓ Pass

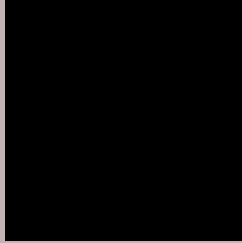
Large Text (above 18pt) WCAG AAA ✓ Pass

Any Text WCAG AAA ✓ Pass

If you want to check with other color combinations, try the [Color Contrast Checker](#).



# Android 4291080885 Background



This preview shows how black text looks on a background with the Android color 4291080885.



This preview shows how white text looks on a background with the Android color 4291080885.

# Color Blindness Simulation

Color vision deficiency is a very complex topic, and I could not describe the different causes any better than Wikipedia does, so if you want to learn more, you should check out their [article about color blindness](#).


## Dichromacy



**Original Color**  
4291080885

**Protanopia**  
4290360759

**Deuteranopia**  
4291342517



**Tritanopia**  
4291146174

# Trichromacy



**Original Color**  
4291080885

**Protanomaly**  
4290622646

**Deuteranomaly**  
4291277237

**Tritanomaly**  
4291146171

# Monochromacy



**Original Color**  
4291080885

**Achromatopsia**  
4290295992

**Achromatomaly**  
4290557623

# CSS Examples

## Text

The CSS property to change the color of the text to Android 4291080885 is called "color". The color property can be set on classes, ids or directly on the HTML element.

This example shows how text in the color `rgb(196, 178, 181)` looks like.

```
.text, #text, p{  
    color:rgb(196, 178, 181)  
}
```

If you want to add a text shadow in that color use the text-shadow property, you can generate a text shadow directly with our [CSS Text Shadow Generator](#).

Here you see how black text with a 4 pixel rgb(196, 178, 181) colored shadow looks like.

```
.shadow{ text-shadow: 4px 4px 2px rgb(196, 178, 181) }
```

## Border

The CSS property to change the border of an element to Android 4291080885 is called "border". The border property can be set on classes, ids or directly on the HTML element.

This example shows the color as border, it can be applied via the CSS property "border" or "border-color".

```
.border, #border, table{ border:4px solid rgb(196, 178, 181) }
```

If only the border color should be changed use the property `border-color`.

```
.border{ border-color:rgb(196, 178, 181) }
```

If you want to add a box shadow in that color use:

Here you see how a box with a 4 pixel `rgb(196, 178, 181)` colored shadow looks like.

```
.boxshadow{ -moz-box-shadow:4px 4px 4px  
4px rgb(196, 178, 181); -webkit-box-  
shadow:4px 4px 4px 4px rgb(196, 178, 181);  
box-shadow:4px 4px 4px 4px rgb(196, 178,  
181) }
```

# Background

The CSS property to change the background color of an element to Android 4291080885 is called "background". The background property can be set on classes, ids or directly on the HTML element.

```
.background, #background, body{  
background: rgb(196, 178, 181) }
```

If only the background color should be changed can be used:

```
.background{ background-color: rgb(196,  
178, 181) }
```

This example shows the color as background, it is applied via the CSS property "background".

To optimize and compress your CSS code, you can use our [online CSS compressor and optimizer](#) based on csstidy. If you want to create a linear or radial gradient as background or border, check our [CSS Gradient Generator](#).



Hey! You found this booklet interesting? Support Converting Colors with the new Membership Option!

The pro membership hides all ads, plus gives you double the colors in the color bucket, and more awesome pro features!

**[Learn more, Memberships starting at \\$2.50/m!](#)**

**Follow me  
on Twitter!**

@ConvertingColor