

Converting Colors

Android(4291141792)

Have a look what the booklet for
Android(4291141792) contains.

Android(4291141792)	3
<i>Conversions</i>	4
<i>Details</i>	6
<i>Harmonies</i>	11
<i>Previews</i>	23
<i>Color Blindness Simulation</i>	26
<i>CSS Examples</i>	29

Color

Android(4291141792)

Conversions

Conversions Part 1

Format	Color
Hex	C5A0A0
RGB	197, 160, 160
RGB Percent	77%, 63%, 63%
CMY	0.2275, 0.3725, 0.3725
CMYK	0.00, 0.19, 0.19, 0.23
HSL	0°, 24%, 70%
HSV	0°, 19%, 77%
XYZ	41.9419, 39.5500, 38.6810
YIQ	171.0630, 22.0520, 7.8440

Conversions

Conversions Part 2

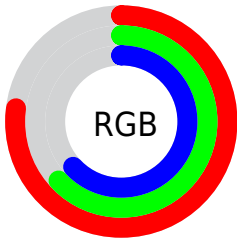
Format	Color
RYB	197, 160, 160
Decimal	12951712
CIELab	69.15, 13.65, 5.16
CIELCh	69, 14.589, 20.709
Yxy	39.5500, 0.3490, 0.3291
Android (android.graphics.Color)	4291141792 (0xFFC5A0A0)
YUV	171.0630, -5.4541, 22.7467
Hunter-Lab	62.8888, 8.9902, 7.5546

Details

The Android color `4291141792` is a light color, and the websafe version is hex `CC9999`. A complement of this color would be `4288726469`, and the grayscale version is `4289440683`.

A 20% lighter version of the original color is `4294891479`, and `4287589485` is the 20% darker color. If you saturate the color by 10%, you get `4291136652`, and if you desaturate by 10%, it is `4291146932`.

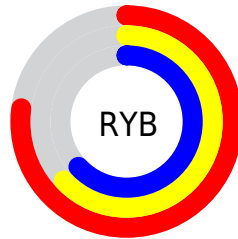
Distribution



Red (77%)

Green (63%)

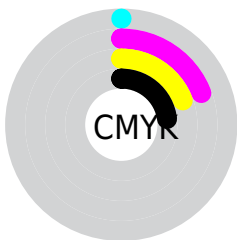
Blue (63%)



Red (77%)

Yellow (63%)

Blue (63%)

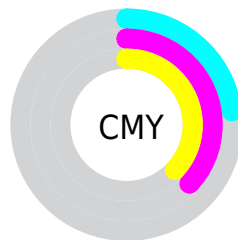


Cyan (0%)

Magenta (19%)

Yellow (19%)

Black (23%)



Cyan (23%)


Magenta (37%)


Yellow (37%)

Brightness & Saturation Gradients

These gradients show how the Android color 4291141792 changes by changing the brightness by 10 percent. The first figure shows a shift by +10% for each color and the second figure -10%.

Similar to the brightness gradients but the following saturation gradients show a change of the Android color 4291141792 by changing the saturation by 10% instead.

 4291141792

 4291141792

4294967295

 4289300102

 4294891479

 4287589485

 4294964211

 4285879380


 4284235069

 4282591015


 4281078291


 4279631872

 4278190080

 4291141792

 4291141792

 4291136652


 4291146932


 4291131769

 4291151815

 4291126629

 4291156955


 4291121489


 4291162095


 4291116606

 4291166207

 4291111466

 4291106326

 4291101186

 4291100672

Harmonies

Analogous

The Analogous color harmony consists of three colors that are next to each other on the color wheel.



4290879661



4291141792



4290880149

Triad

The Triadic color harmony groups three colors that are evenly spaced from another and form a triangle on the color wheel.



4291141792



4288327320



4287998914

Complementary

The Complementary color scheme is a pair of colors which are on the opposite of each other on the color wheel.



4291141792



4288726469

Split Complementary

Split-complementary colors differ from the complementary color scheme. The scheme consists of three colors, the original color and two neighbors of the complement color.



4287279037



4291141792



4287475876

Square

The Square scheme is like the rectangle color scheme, but the four colors are evenly spaced on the color wheel.



4291141792



4289309584



4287082674



4289112001

Rectangle

The Rectangle color scheme consists of four colors that form a rectangle on the color wheel.



4291141792



4290487696



4287082674



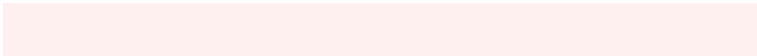
4287737025

Sweetspot

The Sweet Spot groups the original color and five complimentary colors.



4291141792



4294963440



4291141829



4286609271



4278190080



4286611584

Same Dimension

The Same Dimension uses a secret algorithm to generate beautiful new colors.



4291141792



4294952132



4291146656



4284701274



4288872448



4280549376

Inverse Universe

The Inverse Universe completely reimagines the original color for something new.



4288726469



4291100671



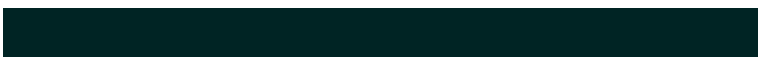
4288721861



4284113763



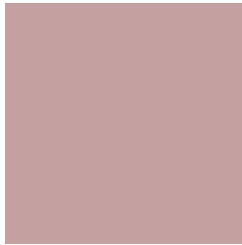
4278231971



4278199332

Previews

White Background



This preview shows how the Android color 4291141792 looks on a white background.

Color Contrast Check

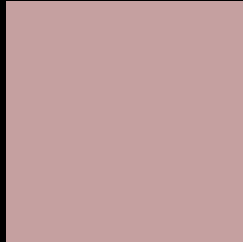
Large Text (above 18pt) WCAG AA × Fail

Any Text WCAG AA × Fail

Large Text (above 18pt) WCAG AAA × Fail

Any Text WCAG AAA × Fail

Black Background



This preview shows how the Android color 4291141792 looks on a black background.

Color Contrast Check

Large Text (above 18pt) WCAG AA ✓ Pass

Any Text WCAG AA ✓ Pass

Large Text (above 18pt) WCAG AAA ✓ Pass

Any Text WCAG AAA ✓ Pass

If you want to check with other color combinations, try the [Color Contrast Checker](#).

Android 4291141792 Background



This preview shows how black text looks on a background with the Android color 4291141792.




This preview shows how white text looks on a background with the Android color 4291141792.

Color Blindness Simulation

Color vision deficiency is a very complex topic, and I could not describe the different causes any better than Wikipedia does, so if you want to learn more, you should check out their [article about color blindness](#).

Dichromacy

	Original Color 4291141792
	Protanopia 4289570981
	Deuteranopia 4290618271



Tritanopia
4291206827

Trichromacy



Original Color
4291141792

Protanomaly
4290160035

Deuteranomaly
4290814623

Tritanomaly
4291207079

Monochromacy



Original Color
4291141792

Achromatopsia
4289440683

Achromatomaly
4290029479

CSS Examples

Text

The CSS property to change the color of the text to Android 4291141792 is called "color". The color property can be set on classes, ids or directly on the HTML element.

This example shows how text in the color `rgb(197, 160, 160)` looks like.

```
.text, #text, p{  
    color:rgb(197, 160, 160)  
}
```

If you want to add a text shadow in that color use the text-shadow property, you can generate a text shadow directly with our [CSS Text Shadow Generator](#).

Here you see how black text with a 4 pixel rgb(197, 160, 160) colored shadow looks like.

```
.shadow{ text-shadow: 4px 4px 2px rgb(197, 160, 160) }
```

Border

The CSS property to change the border of an element to Android 4291141792 is called "border". The border property can be set on classes, ids or directly on the HTML element.

This example shows the color as border, it can be applied via the CSS property "border" or "border-color".

```
.border, #border, table{ border:4px solid rgb(197, 160, 160) }
```

If only the border color should be changed use the property `border-color`.

```
.border{ border-color:rgb(197, 160, 160) }
```

If you want to add a box shadow in that color use:

Here you see how a box with a 4 pixel `rgb(197, 160, 160)` colored shadow looks like.

```
.boxshadow{ -moz-box-shadow:4px 4px 4px  
4px rgb(197, 160, 160); -webkit-box-  
shadow:4px 4px 4px 4px rgb(197, 160, 160);  
box-shadow:4px 4px 4px 4px rgb(197, 160,  
160) }
```

Background

The CSS property to change the background color of an element to Android 4291141792 is called "background". The background property can be set on classes, ids or directly on the HTML element.

```
.background, #background, body{  
background: rgb(197, 160, 160) }
```

If only the background color should be changed can be used:

```
.background{ background-color: rgb(197,  
160, 160) }
```

This example shows the color as background, it is applied via the CSS property "background".

To optimize and compress your CSS code, you can use our [online CSS compressor and optimizer](#) based on csstidy. If you want to create a linear or radial gradient as background or border, check our [CSS Gradient Generator](#).

Hey! You found this booklet interesting? Support Converting Colors with the new Membership Option!

The pro membership hides all ads, plus gives you double the colors in the color bucket, and more awesome pro features!

[Learn more, Memberships starting at \\$2.50/m!](#)

**Follow me
on Twitter!**

@ConvertingColor