

# Converting Colors

Android(4291202641)

Have a look what the booklet for  
Android(4291202641) contains.

<b>Android(4291202641)</b> .....	3
<b><i>Conversions</i></b> .....	4
<b><i>Details</i></b> .....	6
<b><i>Harmonies</i></b> .....	11
<b><i>Previews</i></b> .....	23
<b><i>Color Blindness Simulation</i></b> .....	26
<b><i>CSS Examples</i></b> .....	29

# **Color**

**Android(4291202641)**

# Conversions

## Conversions Part 1

<b>Format</b>	<b>Color</b>
Hex	C68E51
RGB	198, 142, 81
RGB Percent	78%, 56%, 32%
CMY	0.2235, 0.4431, 0.6824
CMYK	0.00, 0.28, 0.59, 0.22
HSL	31°, 51%, 55%
HSV	31°, 59%, 78%
XYZ	34.4469, 31.9458, 12.1352
YIQ	151.7900, 52.9570, -7.0990

# Conversions

## Conversions Part 2

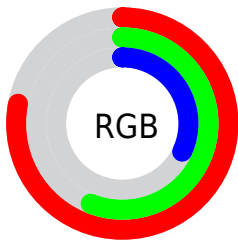
Format	Color
<a href="#">RYB</a>	<a href="#">188, 198, 81</a>
Decimal	<a href="#">13012561</a>
CIELab	<a href="#">63.30, 14.68, 40.47</a>
CIElCh	<a href="#">63, 43.054, 70.061</a>
Yxy	<a href="#">31.9458, 0.4387, 0.4068</a>
Android (android.graphics.Color)	<a href="#">4291202641 (0xFFC68E51)</a>
YUV	<a href="#">151.7900, -34.8995, 40.5262</a>
Hunter-Lab	<a href="#">56.5207, 9.8769, 26.8347</a>

# Details

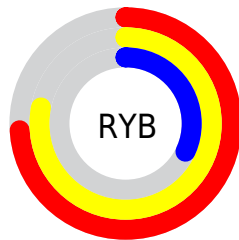
The Android color `4291202641` is a dark color, and the websafe version is hex `CC9966`. The color can be described as middle muted orange. A complement of this color would be `4283533766`, and the grayscale version is `4288190616`.

A 20% lighter version of the original color is `4294952068`, and `4287454241` is the 20% darker color. If you saturate the color by 10%, you get `4291200317`, and if you desaturate by 10%, it is `4291204965`.

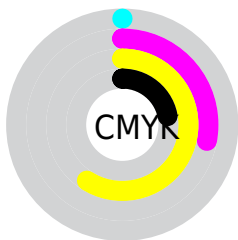
# Distribution



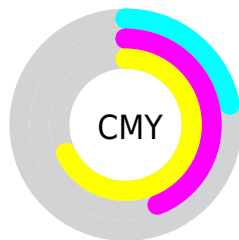
- Red (78%)
- Green (56%)
- Blue (32%)



- Red (74%)
- Yellow (78%)
- Blue (32%)



- Cyan (0%)
- Magenta (28%)
- Yellow (59%)
- Black (22%)



- Cyan (22%)
- Magenta (44%)
- Yellow (68%)

# Brightness & Saturation Gradients

These gradients show how the Android color 4291202641 changes by changing the brightness by 10 percent. The first figure shows a shift by +10% for each color and the second figure -10%.

Similar to the brightness gradients but the following saturation gradients show a change of the Android color 4291202641 by changing the saturation by 10% instead.





4291202641



4291202641

4294967295



4289295417



4294952068



4287454241



4294959262



4285613063



4294966458



4283837952



4294967254



4282063104



4294967282



4280549376



4278190080



4291202641



4291202641



4291200317



4291204965

■ 4291197737

■ 4291207545

■ 4291195414

■ 4291209868

■ 4291192834

■ 4291212448

■ 4291192576

■ 4291214772

■ 4291217352

■ 4291219676

■ 4291222255

■ 4291224575

# Harmonies

## Analogous

The Analogous color harmony consists of three colors that are next to each other on the color wheel.



4292641130



4291202641



4288977740

# Triad

The Triadic color harmony groups three colors that are evenly spaced from another and form a triangle on the color wheel.



4291202641



4278234533



4289628884

# Complementary

The Complementary color scheme is a pair of colors which are on the opposite of each other on the color wheel.



4291202641



4283533766

# Split Complementary

Split-complementary colors differ from the complementary color scheme. The scheme consists of three colors, the original color and two neighbors of the complement color.



4285700580



4291202641



4278234057

# Square

The Square scheme is like the rectangle color scheme, but the four colors are evenly spaced on the color wheel.



4291202641



4282755966



4278232289



4292050612

# Rectangle

The Rectangle color scheme consists of four colors that form a rectangle on the color wheel.



4291202641



4287210069



4278232289



4288450524



# Sweetspot

The Sweet Spot groups the original color and five complimentary colors.



4291202641



4294961617



4291187082



4286607971



4278190080



4286611584



# Same Dimension

The Same Dimension uses a secret algorithm to generate beautiful new colors.



4291202641



4294944842



4291085905



4284702554



4288894208



4280554240

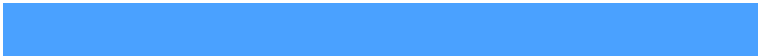


# Inverse Universe

The Inverse Universe completely reimagines the original color for something new.



4283533766



4283081215



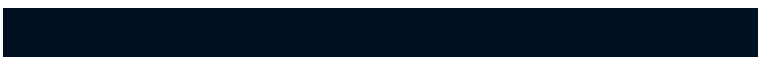
4283650502



4284112483



4278210211

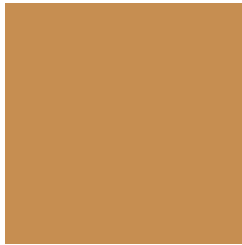


4278194468



# Previews

## White Background



This preview shows how the Android color 4291202641 looks on a white background.

## Color Contrast Check

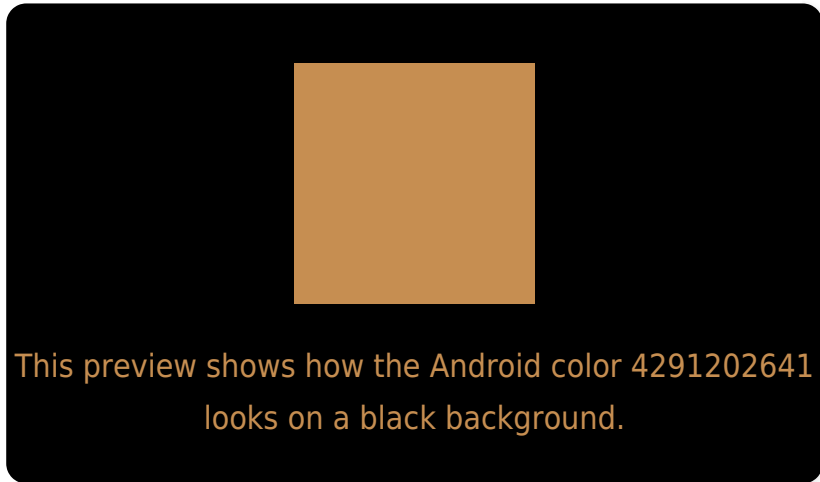
Large Text (above 18pt) WCAG AA × Fail

Any Text WCAG AA × Fail

Large Text (above 18pt) WCAG AAA × Fail

Any Text WCAG AAA × Fail

# Black Background



## Color Contrast Check

Large Text (above 18pt) WCAG AA ✓ Pass

Any Text WCAG AA ✓ Pass

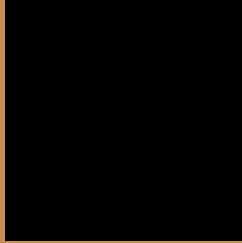
Large Text (above 18pt) WCAG AAA ✓ Pass

Any Text WCAG AAA ✓ Pass

If you want to check with other color combinations, try the [Color Contrast Checker](#).



# Android 4291202641 Background



This preview shows how black text looks on a background with the Android color 4291202641.



This preview shows how white text looks on a background with the Android color 4291202641.

# Color Blindness Simulation

Color vision deficiency is a very complex topic, and I could not describe the different causes any better than Wikipedia does, so if you want to learn more, you should check out their [article about color blindness](#).


## Dichromacy



**Original Color**  
4291202641

**Protanopia**  
4289305173

**Deuteranopia**  
4290548304



**Tritanopia**  
4291528593

# Trichromacy



**Original Color**  
4291202641

**Protanomaly**  
4290025044

**Deuteranomaly**  
4290810192

**Tritanomaly**  
4291398266

# Monochromacy



**Original Color**  
4291202641

**Achromatopsia**  
4288190616

**Achromatomaly**  
4289303678

# CSS Examples

## Text

The CSS property to change the color of the text to Android 4291202641 is called "color". The color property can be set on classes, ids or directly on the HTML element.

This example shows how text in the color `rgb(198, 142, 81)` looks like.

```
.text, #text, p{  
    color:rgb(198, 142, 81)  
}
```

If you want to add a text shadow in that color use the text-shadow property, you can generate a text shadow directly with our [CSS Text Shadow Generator](#).

Here you see how black text with a 4 pixel rgb(198, 142, 81) colored shadow looks like.

```
.shadow{ text-shadow: 4px 4px 2px rgb(198, 142, 81) }
```

## Border

The CSS property to change the border of an element to Android 4291202641 is called "border". The border property can be set on classes, ids or directly on the HTML element.

This example shows the color as border, it can be applied via the CSS property "border" or "border-color".

```
.border, #border, table{ border:4px solid rgb(198, 142, 81) }
```

If only the border color should be changed use the property `border-color`.

```
.border{ border-color:rgb(198, 142, 81) }
```

If you want to add a box shadow in that color use:

Here you see how a box with a 4 pixel `rgb(198, 142, 81)` colored shadow looks like.

```
.boxshadow{ -moz-box-shadow:4px 4px 4px  
4px rgb(198, 142, 81); -webkit-box-  
shadow:4px 4px 4px 4px rgb(198, 142, 81);  
box-shadow:4px 4px 4px 4px rgb(198, 142,  
81) }
```

# Background

The CSS property to change the background color of an element to Android 4291202641 is called "background". The background property can be set on classes, ids or directly on the HTML element.

```
.background, #background, body{  
background: rgb(198, 142, 81) }
```

If only the background color should be changed can be used:

```
.background{ background-color: rgb(198,  
142, 81) }
```

This example shows the color as background, it is applied via the CSS property "background".

To optimize and compress your CSS code, you can use our [online CSS compressor and optimizer](#) based on csstidy. If you want to create a linear or radial gradient as background or border, check our [CSS Gradient Generator](#).



Hey! You found this booklet interesting? Support Converting Colors with the new Membership Option!

The pro membership hides all ads, plus gives you double the colors in the color bucket, and more awesome pro features!

**[Learn more, Memberships starting at \\$2.50/m!](#)**

**Follow me  
on Twitter!**

@ConvertingColor