

Converting Colors

Android(4291265156)

Have a look what the booklet for
Android(4291265156) contains.

Android(4291265156)	3
<i>Conversions</i>	4
<i>Details</i>	6
<i>Harmonies</i>	11
<i>Previews</i>	23
<i>Color Blindness Simulation</i>	26
<i>CSS Examples</i>	29

Color

Android(4291265156)

Conversions

Conversions Part 1

Format	Color
Hex	C78284
RGB	199, 130, 132
RGB Percent	78%, 51%, 52%
CMY	0.2196, 0.4902, 0.4824
CMYK	0.00, 0.35, 0.34, 0.22
HSL	358°, 38%, 65%
HSV	358°, 35%, 78%
XYZ	35.7007, 29.7733, 25.6950
YIQ	150.8590, 40.4820, 15.2500

Conversions

Conversions Part 2

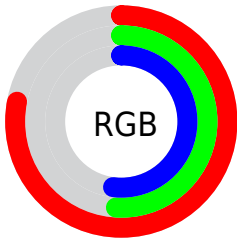
Format	Color
R_{YB}	199, 130, 132
Decimal	13075076
CIE _{Lab}	61.46, 26.89, 9.96
CIE _{LCh}	61, 28.671, 20.319
Yxy	29.7733, 0.3916, 0.3266
Android (android.graphics.Color)	4291265156 (0xFFC78284)
YUV	150.8590, -9.2975, 42.2197
Hunter-Lab	54.5649, 21.3001, 10.2754

Details

The Android color **4291265156** is a light color, and the websafe version is hex **CC9999**. A complement of this color would be **4286760901**, and the grayscale version is **4288124823**.

A 20% lighter version of the original color is **4294949049**, and **4287582291** is the 20% darker color. If you saturate the color by 10%, you get **4291260017**, and if you desaturate by 10%, it is **4291270295**.

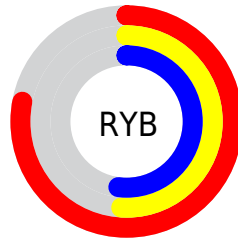
Distribution



Red (78%)

Green (51%)

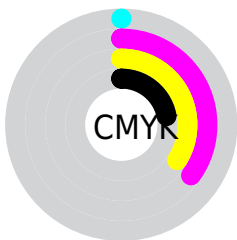
Blue (52%)



Red (78%)

Yellow (51%)

Blue (52%)

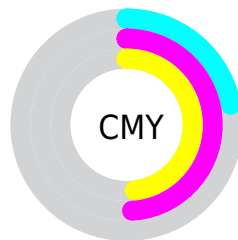


Cyan (0%)

Magenta (35%)

Yellow (34%)

Black (22%)



Cyan (22%)

Magenta (49%)

Yellow (48%)

Brightness & Saturation Gradients

These gradients show how the Android color 4291265156 changes by changing the brightness by 10 percent. The first figure shows a shift by +10% for each color and the second figure -10%.

Similar to the brightness gradients but the following saturation gradients show a change of the Android color 4291265156 by changing the saturation by 10% instead.

 4291265156

 4291265156

4294967295

 4289423467

 4294949049

 4287582291

 4294955989

 4285806652

 4294963441

 4284096806

 4282386706

 4281008128


 4278190080

 4291265156

 4291265156

 4291260017

 4291270295

 4291254877

 4291275435

 4291249738

 4291280574

 4291244599

 4291285713

 4291239459

 4291290853

 4291234576

 4291295736

 4291231750

 4291297279

Harmonies

Analogous

The Analogous color harmony consists of three colors that are next to each other on the color wheel.



4290871966



4291265156



4290807918

Triad

The Triadic color harmony groups three colors that are evenly spaced from another and form a triangle on the color wheel.



4291265156



4286029427



4284914118

Complementary

The Complementary color scheme is a pair of colors which are on the opposite of each other on the color wheel.



4291265156



4286760901

Split Complementary

Split-complementary colors differ from the complementary color scheme. The scheme consists of three colors, the original color and two neighbors of the complement color.



4282818491



4291265156



4284064395

Square

The Square scheme is like the rectangle color scheme, but the four colors are evenly spaced on the color wheel.



4291265156



4287928420



4282557093



4287402436

Rectangle

The Rectangle color scheme consists of four colors that form a rectangle on the color wheel.



4291265156



4290022757



4282557093



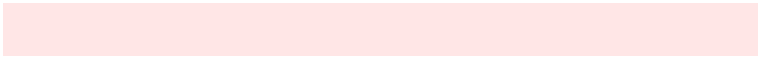
4284128452

Sweetspot

The Sweet Spot groups the original color and five complimentary colors.



4291265156



4294960870



4291134151



4286607473



4278190080



4286611584

Same Dimension

The Same Dimension uses a secret algorithm to generate beautiful new colors.



4291265156



4294939799



4291273346



4284701274



4288872453



4280549377

Inverse Universe

The Inverse Universe completely reimagines the original color for something new.



4291265156



4294939799



4286752711



4284701274



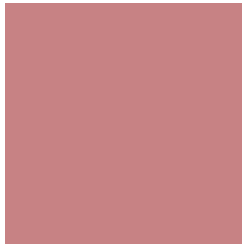
4288872453



4280549377

Previews

White Background



This preview shows how the Android color 4291265156 looks on a white background.

Color Contrast Check

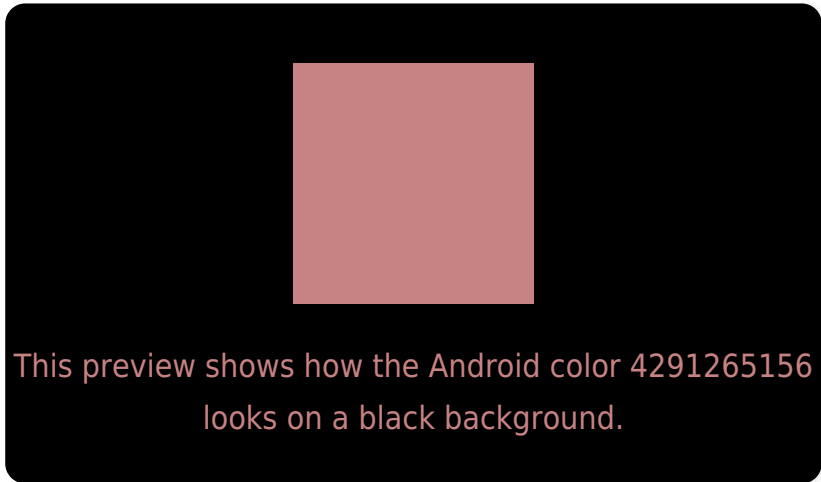
Large Text (above 18pt) WCAG AA ✓ Pass

Any Text WCAG AA ✗ Fail

Large Text (above 18pt) WCAG AAA ✗ Fail

Any Text WCAG AAA ✗ Fail

Black Background



Color Contrast Check

Large Text (above 18pt) WCAG AA ✓ Pass

Any Text WCAG AA ✓ Pass

Large Text (above 18pt) WCAG AAA ✓ Pass

Any Text WCAG AAA × Fail

If you want to check with other color combinations, try the [Color Contrast Checker](#).

Android 4291265156 Background



This preview shows how black text looks on a background with the Android color 4291265156.




This preview shows how white text looks on a background with the Android color 4291265156.

Color Blindness Simulation

Color vision deficiency is a very complex topic, and I could not describe the different causes any better than Wikipedia does, so if you want to learn more, you should check out their [article about color blindness](#).

Dichromacy





Tritanopia
4291330443

Trichromacy



Original Color
4291265156

Protanomaly
4289367434

Deuteranomaly
4290087555

Tritanomaly
4291330440

Monochromacy



Original Color
4291265156

Achromatopsia
4288124823

Achromatomaly
4289236880

CSS Examples

Text

The CSS property to change the color of the text to Android 4291265156 is called "color". The color property can be set on classes, ids or directly on the HTML element.

This example shows how text in the color `rgb(199, 130, 132)` looks like.

```
.text, #text, p{  
    color:rgb(199, 130, 132)  
}
```

If you want to add a text shadow in that color use the text-shadow property, you can generate a text shadow directly with our [CSS Text Shadow Generator](#).

Here you see how black text with a 4 pixel rgb(199, 130, 132) colored shadow looks like.

```
.shadow{ text-shadow: 4px 4px 2px rgb(199, 130, 132) }
```

Border

The CSS property to change the border of an element to Android 4291265156 is called "border". The border property can be set on classes, ids or directly on the HTML element.

This example shows the color as border, it can be applied via the CSS property "border" or "border-color".

```
.border, #border, table{ border:4px solid rgb(199, 130, 132) }
```

If only the border color should be changed use the property `border-color`.

```
.border{ border-color:rgb(199, 130, 132) }
```

If you want to add a box shadow in that color use:

Here you see how a box with a 4 pixel `rgb(199, 130, 132)` colored shadow looks like.

```
.boxshadow{ -moz-box-shadow:4px 4px 4px  
4px rgb(199, 130, 132); -webkit-box-  
shadow:4px 4px 4px 4px rgb(199, 130, 132);  
box-shadow:4px 4px 4px 4px rgb(199, 130,  
132) }
```

Background

The CSS property to change the background color of an element to Android 4291265156 is called "background". The background property can be set on classes, ids or directly on the HTML element.

```
.background, #background, body{  
background: rgb(199, 130, 132) }
```

If only the background color should be changed can be used:

```
.background{ background-color: rgb(199,  
130, 132) }
```

This example shows the color as background, it is applied via the CSS property "background".

To optimize and compress your CSS code, you can use our [online CSS compressor and optimizer](#) based on csstidy. If you want to create a linear or radial gradient as background or border, check our [CSS Gradient Generator](#).

Hey! You found this booklet interesting? Support Converting Colors with the new Membership Option!

The pro membership hides all ads, plus gives you double the colors in the color bucket, and more awesome pro features!

[Learn more, Memberships starting at \\$2.50/m!](#)

**Follow me
on Twitter!**

@ConvertingColor