

Converting Colors

Android(4291273635)

Have a look what the booklet for
Android(4291273635) contains.

Android(4291273635)	3
<i>Conversions</i>	4
<i>Details</i>	6
<i>Harmonies</i>	11
<i>Previews</i>	23
<i>Color Blindness Simulation</i>	26
<i>CSS Examples</i>	29

Color

Android(4291273635)

Conversions

Conversions Part 1

Format	Color
Hex	C7A3A3
RGB	199, 163, 163
RGB Percent	78%, 64%, 64%
CMY	0.2196, 0.3608, 0.3608
CMYK	0.00, 0.18, 0.18, 0.22
HSL	0°, 24%, 71%
HSV	0°, 18%, 78%
XYZ	43.2612, 40.9808, 40.2803
YIQ	173.7640, 21.4560, 7.6320

Conversions

Conversions Part 2

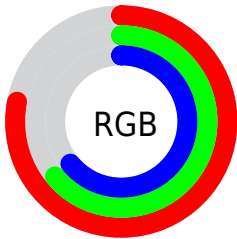
Format	Color
RYB	199, 163, 163
Decimal	13083555
CIELab	70.16, 13.22, 4.98
CIELCh	70, 14.130, 20.648
Yxy	40.9808, 0.3474, 0.3291
Android (android.graphics.Color)	4291273635 (0xFFC7A3A3)
YUV	173.7640, -5.3067, 22.1320
Hunter-Lab	64.0163, 8.5991, 7.5050

Details

The Android color `4291273635` is a light color, and the websafe version is hex `CC9999`. A complement of this color would be `4288923591`, and the grayscale version is `4289638062`.

A 20% lighter version of the original color is `4294957786`, and `4287721327` is the 20% darker color. If you saturate the color by 10%, you get `4291268495`, and if you desaturate by 10%, it is `4291278775`.

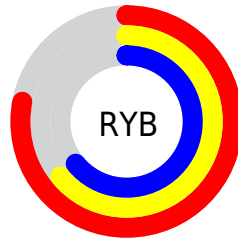
Distribution



Red (78%)

Green (64%)

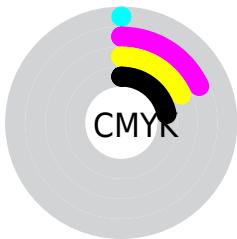
Blue (64%)



Red (78%)

Yellow (64%)

Blue (64%)

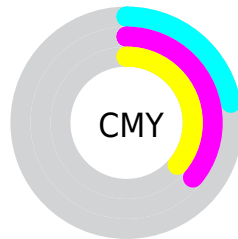


Cyan (0%)

Magenta (18%)

Yellow (18%)

Black (22%)



Cyan (22%)

Magenta (36%)

Yellow (36%)

Brightness & Saturation Gradients

These gradients show how the Android color 4291273635 changes by changing the brightness by 10 percent. The first figure shows a shift by +10% for each color and the second figure -10%.

Similar to the brightness gradients but the following saturation gradients show a change of the Android color 4291273635 by changing the saturation by 10% instead.



4291273635



4291273635

4294967295



4289431945



4294957786



4287721327



4294964982



4286011223



4284301120



4282722602



4281209878



4279959553




4278190080





4291273635




4291273635

 4291268495


 4291278775

 4291263355

 4291283915

 4291258215

 4291289055

 4291253075


 4291294195

 4291248192

 4291297279

 4291243052

 4291237912

 4291232772

 4291231744

Harmonies

Analogous

The Analogous color harmony consists of three colors that are next to each other on the color wheel.



4291011504



4291273635



4291077528

Triad

The Triadic color harmony groups three colors that are evenly spaced from another and form a triangle on the color wheel.



4291273635



4288524699



4288261828

Complementary

The Complementary color scheme is a pair of colors which are on the opposite of each other on the color wheel.



4291273635



4288923591

Split Complementary

Split-complementary colors differ from the complementary color scheme. The scheme consists of three colors, the original color and two neighbors of the complement color.



4287476159



4291273635



4287738791

Square

The Square scheme is like the rectangle color scheme, but the four colors are evenly spaced on the color wheel.



4291273635



4289506707



4287345588



4289309379

Rectangle

The Rectangle color scheme consists of four colors that form a rectangle on the color wheel.



4291273635



4290685076



4287345588



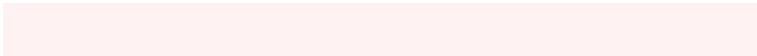
4287934403

Sweetspot

The Sweet Spot groups the original color and five complimentary colors.



4291273635



4294963954



4291273671



4286609528



4278190080



4286611584

Same Dimension

The Same Dimension uses a secret algorithm to generate beautiful new colors.



4291273635



4294952903



4291278243



4284701274



4288872448



4280549376

Inverse Universe

The Inverse Universe completely reimagines the original color for something new.



4288923591



4291297279



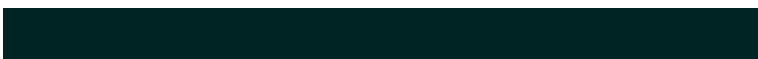
4288918983



4284113763



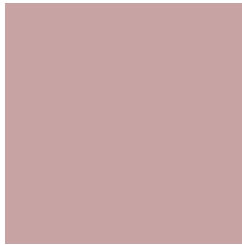
4278231971



4278199332

Previews

White Background



This preview shows how the Android color 4291273635 looks on a white background.

Color Contrast Check

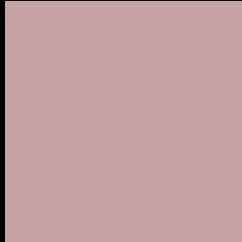
Large Text (above 18pt) WCAG AA × Fail

Any Text WCAG AA × Fail

Large Text (above 18pt) WCAG AAA × Fail

Any Text WCAG AAA × Fail

Black Background



This preview shows how the Android color 4291273635 looks on a black background.

Color Contrast Check

Large Text (above 18pt) WCAG AA ✓ Pass

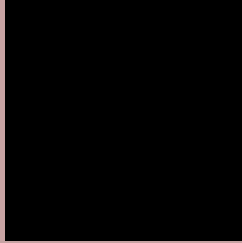
Any Text WCAG AA ✓ Pass

Large Text (above 18pt) WCAG AAA ✓ Pass

Any Text WCAG AAA ✓ Pass

If you want to check with other color combinations, try the [Color Contrast Checker](#).

Android 4291273635 Background



This preview shows how black text looks on a background with the Android color 4291273635.



This preview shows how white text looks on a background with the Android color 4291273635.

Color Blindness Simulation

Color vision deficiency is a very complex topic, and I could not describe the different causes any better than Wikipedia does, so if you want to learn more, you should check out their [article about color blindness](#).


Dichromacy



Original Color
4291273635

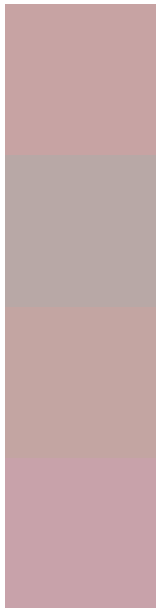
Protanopia
4289768359

Deuteranopia
4290815650



Tritanopia
4291338670

Trichromacy



Original Color
4291273635

Protanomaly
4290291878

Deuteranomaly
4291012002

Tritanomaly
4291338922

Monochromacy



Original Color
4291273635

Achromatopsia
4289638062

Achromatomaly
4290226858

CSS Examples

Text

The CSS property to change the color of the text to Android 4291273635 is called "color". The color property can be set on classes, ids or directly on the HTML element.

This example shows how text in the color `rgb(199, 163, 163)` looks like.

```
.text, #text, p{  
    color:rgb(199, 163, 163)  
}
```

If you want to add a text shadow in that color use the text-shadow property, you can generate a text shadow directly with our [CSS Text Shadow Generator](#).

Here you see how black text with a 4 pixel rgb(199, 163, 163) colored shadow looks like.

```
.shadow{ text-shadow: 4px 4px 2px rgb(199, 163, 163) }
```

Border

The CSS property to change the border of an element to Android 4291273635 is called "border". The border property can be set on classes, ids or directly on the HTML element.

This example shows the color as border, it can be applied via the CSS property "border" or "border-color".

```
.border, #border, table{ border:4px solid rgb(199, 163, 163) }
```

If only the border color should be changed use the property `border-color`.

```
.border{ border-color:rgb(199, 163, 163) }
```

If you want to add a box shadow in that color use:

Here you see how a box with a 4 pixel `rgb(199, 163, 163)` colored shadow looks like.

```
.boxshadow{ -moz-box-shadow:4px 4px 4px  
4px rgb(199, 163, 163); -webkit-box-  
shadow:4px 4px 4px 4px rgb(199, 163, 163);  
box-shadow:4px 4px 4px 4px rgb(199, 163,  
163) }
```

Background

The CSS property to change the background color of an element to Android 4291273635 is called "background". The background property can be set on classes, ids or directly on the HTML element.

```
.background, #background, body{  
background: rgb(199, 163, 163) }
```

If only the background color should be changed can be used:

```
.background{ background-color: rgb(199,  
163, 163) }
```

This example shows the color as background, it is applied via the CSS property "background".

To optimize and compress your CSS code, you can use our [online CSS compressor and optimizer](#) based on csstidy. If you want to create a linear or radial gradient as background or border, check our [CSS Gradient Generator](#).

Hey! You found this booklet interesting? Support Converting Colors with the new Membership Option!

The pro membership hides all ads, plus gives you double the colors in the color bucket, and more awesome pro features!

[Learn more, Memberships starting at \\$2.50/m!](#)

**Follow me
on Twitter!**

@ConvertingColor