

# Converting Colors

Android(4291275918)

Have a look what the booklet for  
Android(4291275918) contains.

<b>Android(4291275918)</b> .....	3
<b><i>Conversions</i></b> .....	4
<b><i>Details</i></b> .....	6
<b><i>Harmonies</i></b> .....	11
<b><i>Previews</i></b> .....	23
<b><i>Color Blindness Simulation</i></b> .....	26
<b><i>CSS Examples</i></b> .....	29

# **Color**

**Android(4291275918)**

# Conversions

## Conversions Part 1

Format	Color
Hex	C7AC8E
RGB	199, 172, 142
RGB Percent	78%, 67%, 56%
CMY	0.2196, 0.3255, 0.4431
CMYK	0.00, 0.14, 0.29, 0.22
HSL	32°, 34%, 67%
HSV	32°, 29%, 78%
XYZ	43.1882, 43.6002, 31.7306
YIQ	176.6530, 25.7220, -3.6060

# Conversions

## Conversions Part 2

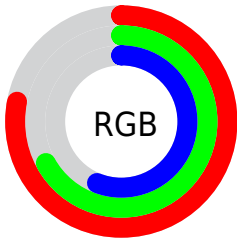
<b>Format</b>	<b>Color</b>
<b>R<sub>YB</sub></b>	193, 199, 142
Decimal	13085838
CIE <sub>Lab</sub>	71.96, 5.26, 19.06
CIE <sub>LCh</sub>	72, 19.770, 74.581
Yxy	43.6002, 0.3644, 0.3679
Android (android.graphics.Color)	4291275918 (0xFFC7AC8E)
YUV	176.6530, -17.0839, 19.5983
Hunter-Lab	66.0304, 1.1974, 17.7298

# Details

The Android color `4291275918` is a light color, and the websafe version is hex `CCCC99`. A complement of this color would be `4287539655`, and the grayscale version is `4289835441`.

A 20% lighter version of the original color is `4294960068`, and `4287658076` is the 20% darker color. If you saturate the color by 10%, you get `4291273594`, and if you desaturate by 10%, it is `4291278242`.

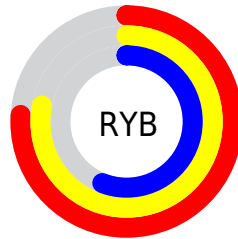
# Distribution



Red (78%)

Green (67%)

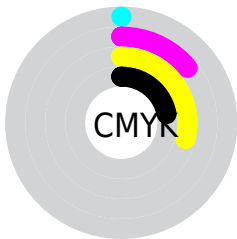
Blue (56%)



Red (76%)

Yellow (78%)

Blue (56%)

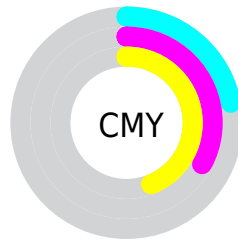


Cyan (0%)

Magenta (14%)

Yellow (29%)

Black (22%)



Cyan (22%)

Magenta (33%)

Yellow (44%)

# Brightness & Saturation Gradients

These gradients show how the Android color 4291275918 changes by changing the brightness by 10 percent. The first figure shows a shift by +10% for each color and the second figure -10%.

Similar to the brightness gradients but the following saturation gradients show a change of the Android color 4291275918 by changing the saturation by 10% instead.





4291275918



4291275918

4294967295



4289433972



4294960068



4287658076



4294967264



4285947716



4294967292



4284303149



4282659096



4281211904



4279567104



4278190080



4291275918



4291275918

 4291273594

 4291278242

 4291271014

 4291280822

 4291268690

 4291283146

 4291266110

 4291285726

 4291263787

 4291288050

 4291261207

 4291290623

 4291258883

 4291292927

 4291258624

 4291295231

 4291297279

# Harmonies

## Analogous

The Analogous color harmony consists of three colors that are next to each other on the color wheel.



4292061080



4291275918



4290097805

# Triad

The Triadic color harmony groups three colors that are evenly spaced from another and form a triangle on the color wheel.



4291275918



4286692281



4290685386

# Complementary

The Complementary color scheme is a pair of colors which are on the opposite of each other on the color wheel.



4291275918



4287539655

# Split Complementary

Split-complementary colors differ from the complementary color scheme. The scheme consists of three colors, the original color and two neighbors of the complement color.



4289179603



4291275918



4286691785

# Square

The Square scheme is like the rectangle color scheme, but the four colors are evenly spaced on the color wheel.



4291275918



4287478438



4287673811



4291798458

# Rectangle

The Rectangle color scheme consists of four colors that form a rectangle on the color wheel.



4291275918



4289181330



4287673811



4290227150



# Sweetspot

The Sweet Spot groups the original color and five complimentary colors.



4291275918



4294964456



4291268266



4286609777



4278190080



4286611584



# Same Dimension

The Same Dimension uses a secret algorithm to generate beautiful new colors.



4291275918



4294956712



4291217294



4284702554



4288894464



4280554240

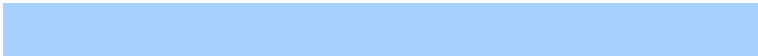


# Inverse Universe

The Inverse Universe completely reimagines the original color for something new.



4287539655



4289253887



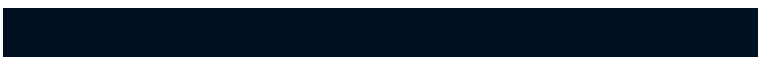
4287598279



4284112483



4278209955

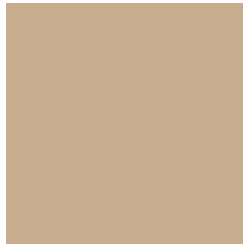


4278194468



# Previews

## White Background



This preview shows how the Android color 4291275918 looks on a white background.

## Color Contrast Check

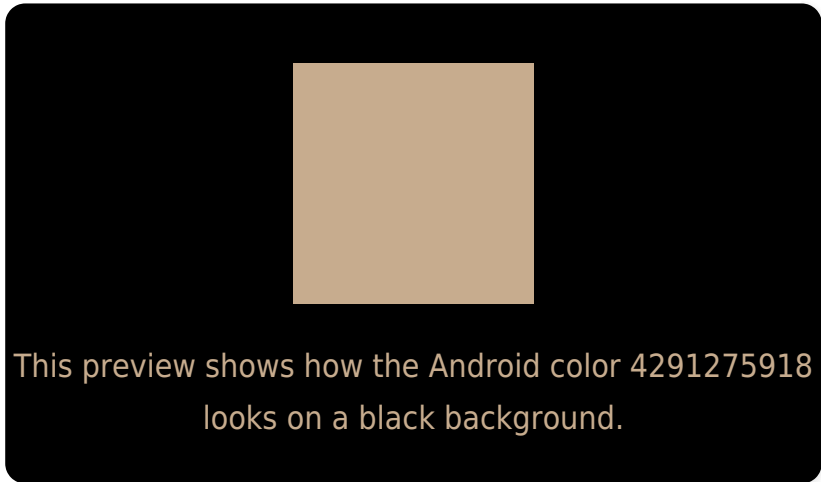
Large Text (above 18pt) WCAG AA × Fail

Any Text WCAG AA × Fail

Large Text (above 18pt) WCAG AAA × Fail

Any Text WCAG AAA × Fail

# Black Background



## Color Contrast Check

Large Text (above 18pt) WCAG AA ✓ Pass

Any Text WCAG AA ✓ Pass

Large Text (above 18pt) WCAG AAA ✓ Pass

Any Text WCAG AAA ✓ Pass

If you want to check with other color combinations, try the [Color Contrast Checker](#).



# Android 4291275918 Background



This preview shows how black text looks on a background with the Android color 4291275918.



This preview shows how white text looks on a background with the Android color 4291275918.

# Color Blindness Simulation

Color vision deficiency is a very complex topic, and I could not describe the different causes any better than Wikipedia does, so if you want to learn more, you should check out their [article about color blindness](#).

## Dichromacy



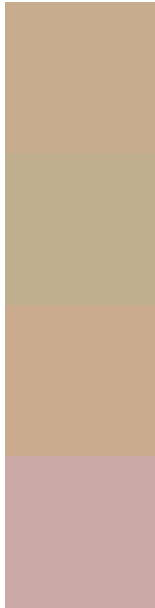
**Original Color**  
4291275918

**Protanopia**  
4290490512

**Deuteranopia**  
4291668622



# Trichromacy



**Original Color**  
4291275918

**Protanomaly**  
4290752399

**Deuteranomaly**  
4291537806

**Tritanomaly**  
4291471782

# Monochromacy



**Original Color**  
4291275918

**Achromatopsia**  
4289835441

**Achromatomaly**  
4290359204

# CSS Examples

## Text

The CSS property to change the color of the text to Android 4291275918 is called "color". The color property can be set on classes, ids or directly on the HTML element.

This example shows how text in the color `rgb(199, 172, 142)` looks like.

```
.text, #text, p{  
    color:rgb(199, 172, 142)  
}
```

If you want to add a text shadow in that color use the text-shadow property, you can generate a text shadow directly with our [CSS Text Shadow Generator](#).

Here you see how black text with a 4 pixel rgb(199, 172, 142) colored shadow looks like.

```
.shadow{ text-shadow: 4px 4px 2px rgb(199, 172, 142) }
```

## Border

The CSS property to change the border of an element to Android 4291275918 is called "border". The border property can be set on classes, ids or directly on the HTML element.

This example shows the color as border, it can be applied via the CSS property "border" or "border-color".

```
.border, #border, table{ border:4px solid rgb(199, 172, 142) }
```

If only the border color should be changed use the property `border-color`.

```
.border{ border-color:rgb(199, 172, 142) }
```

If you want to add a box shadow in that color use:

Here you see how a box with a 4 pixel `rgb(199, 172, 142)` colored shadow looks like.

```
.boxshadow{ -moz-box-shadow:4px 4px 4px  
4px rgb(199, 172, 142); -webkit-box-  
shadow:4px 4px 4px 4px rgb(199, 172, 142);  
box-shadow:4px 4px 4px 4px rgb(199, 172,  
142) }
```

# Background

The CSS property to change the background color of an element to Android 4291275918 is called "background". The background property can be set on classes, ids or directly on the HTML element.

```
.background, #background, body{  
background: rgb(199, 172, 142) }
```

If only the background color should be changed can be used:

```
.background{ background-color: rgb(199,  
172, 142) }
```

This example shows the color as background, it is applied via the CSS property "background".

To optimize and compress your CSS code, you can use our [online CSS compressor and optimizer](#) based on csstidy. If you want to create a linear or radial gradient as background or border, check our [CSS Gradient Generator](#).



Hey! You found this booklet interesting? Support Converting Colors with the new Membership Option!

The pro membership hides all ads, plus gives you double the colors in the color bucket, and more awesome pro features!

**[Learn more, Memberships starting at \\$2.50/m!](#)**

**Follow me  
on Twitter!**

@ConvertingColor