

Converting Colors

Android(4291276947)

Have a look what the booklet for
Android(4291276947) contains.

Android(4291276947)	3
<i>Conversions</i>	4
<i>Details</i>	6
<i>Harmonies</i>	11
<i>Previews</i>	23
<i>Color Blindness Simulation</i>	26
<i>CSS Examples</i>	29

Color

Android(4291276947)

Conversions

Conversions Part 1

Format	Color
Hex	C7B093
RGB	199, 176, 147
RGB Percent	78%, 69%, 58%
CMY	0.2196, 0.3098, 0.4235
CMYK	0.00, 0.12, 0.26, 0.22
HSL	33°, 32%, 68%
HSV	33°, 26%, 78%
XYZ	44.3450, 45.2994, 34.0102
YIQ	179.5710, 23.0170, -4.1430

Conversions

Conversions Part 2

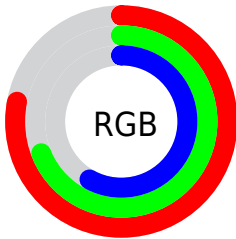
Format	Color
RYB	188, 199, 147
Decimal	13086867
CIELab	73.09, 3.80, 17.90
CIElCh	73, 18.299, 78.030
Yxy	45.2994, 0.3586, 0.3663
Android (android.graphics.Color)	4291276947 (0xFFC7B093)
YUV	179.5710, -16.0575, 17.0392
Hunter-Lab	67.3048, -0.1755, 17.1532

Details

The Android color **4291276947** is a light color, and the websafe version is hex **CCCC99**. A complement of this color would be **4287867591**, and the grayscale version is **4290032820**.

A 20% lighter version of the original color is **4294961353**, and **4287659104** is the 20% darker color. If you saturate the color by 10%, you get **4291274623**, and if you desaturate by 10%, it is **4291279271**.

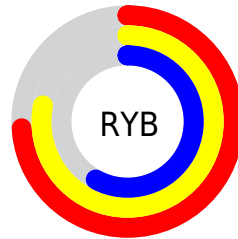
Distribution



Red (78%)

Green (69%)

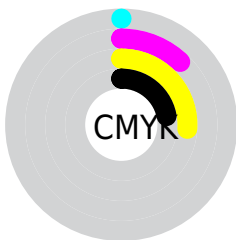
Blue (58%)



Red (74%)

Yellow (78%)

Blue (58%)

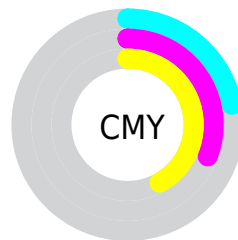


Cyan (0%)

Magenta (12%)

Yellow (26%)

Black (22%)



Cyan (22%)

Magenta (31%)

Yellow (42%)

Brightness & Saturation Gradients

These gradients show how the Android color 4291276947 changes by changing the brightness by 10 percent. The first figure shows a shift by +10% for each color and the second figure -10%.

Similar to the brightness gradients but the following saturation gradients show a change of the Android color 4291276947 by changing the saturation by 10% instead.



4291276947



4291276947

4294967295



4289435001



4294961353



4287659104



4294967269



4285948744



4284304178



4282725404



4281212676



4279633920



4278190080



4291276947



4291276947

■ 4291274623

■ 4291279271

■ 4291272299

■ 4291281595

■ 4291270231

■ 4291283663

■ 4291267907

■ 4291285987

■ 4291265584

■ 4291288311

■ 4291263260

■ 4291290623

■ 4291260936

■ 4291292927

■ 4291260160

■ 4291294975

■ 4291297279

Harmonies

Analogous

The Analogous color harmony consists of three colors that are next to each other on the color wheel.



4292062107



4291276947



4290164372

Triad

The Triadic color harmony groups three colors that are evenly spaced from another and form a triangle on the color wheel.



4291276947



4287086013



4291013834

Complementary

The Complementary color scheme is a pair of colors which are on the opposite of each other on the color wheel.



4291276947



4287867591

Split Complementary

Split-complementary colors differ from the complementary color scheme. The scheme consists of three colors, the original color and two neighbors of the complement color.



4289638867



4291276947



4287282124

Square

The Square scheme is like the rectangle color scheme, but the four colors are evenly spaced on the color wheel.



4291276947



4287741356



4288198612



4291930299

Rectangle

The Rectangle color scheme consists of four colors that form a rectangle on the color wheel.



4291276947



4289313177



4288198612



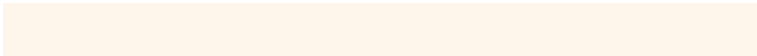
4290555598

Sweetspot

The Sweet Spot groups the original color and five complimentary colors.



4291276947



4294964971



4291269546



4286610035



4278190080



4286611584

Same Dimension

The Same Dimension uses a secret algorithm to generate beautiful new colors.



4291276947



4294958256



4291086227



4284702554



4288895744



4280554496

Inverse Universe

The Inverse Universe completely reimagines the original color for something new.



4287867591



4289778687



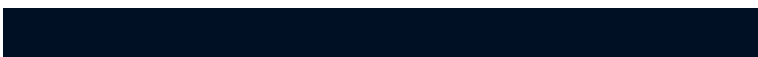
4288058311



4284112483



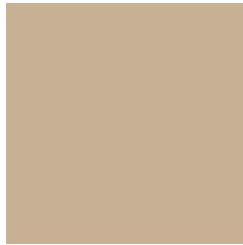
4278208675



4278194212

Previews

White Background



This preview shows how the Android color 4291276947 looks on a white background.

Color Contrast Check

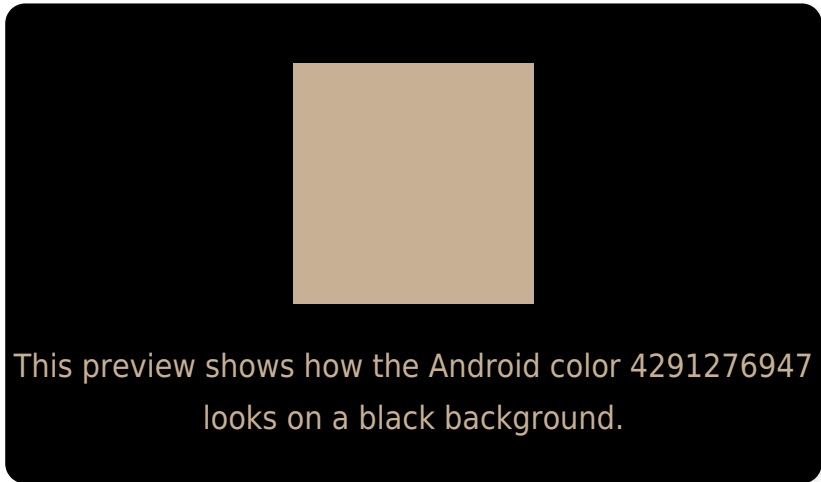
Large Text (above 18pt) WCAG AA × Fail

Any Text WCAG AA × Fail

Large Text (above 18pt) WCAG AAA × Fail

Any Text WCAG AAA × Fail

Black Background



Color Contrast Check

Large Text (above 18pt) WCAG AA ✓ Pass

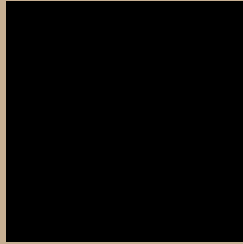
Any Text WCAG AA ✓ Pass

Large Text (above 18pt) WCAG AAA ✓ Pass

Any Text WCAG AAA ✓ Pass

If you want to check with other color combinations, try the [Color Contrast Checker](#).

Android 4291276947 Background



This preview shows how black text looks on a background with the Android color 4291276947.



This preview shows how white text looks on a background with the Android color 4291276947.

Color Blindness Simulation

Color vision deficiency is a very complex topic, and I could not describe the different causes any better than Wikipedia does, so if you want to learn more, you should check out their [article about color blindness](#).

Dichromacy



Original Color
4291276947

Protanopia
4290687893

Deuteranopia
4291866004



Tritanopia
4291537848

Trichromacy



Original Color
4291276947

Protanomaly
4290884244

Deuteranomaly
4291669652

Tritanomaly
4291472811

Monochromacy



Original Color
4291276947

Achromatopsia
4290032820

Achromatomaly
4290491304

CSS Examples

Text

The CSS property to change the color of the text to Android 4291276947 is called "color". The color property can be set on classes, ids or directly on the HTML element.

This example shows how text in the color `rgb(199, 176, 147)` looks like.

```
.text, #text, p{  
    color:rgb(199, 176, 147)  
}
```

If you want to add a text shadow in that color use the text-shadow property, you can generate a text shadow directly with our [CSS Text Shadow Generator](#).

Here you see how black text with a 4 pixel rgb(199, 176, 147) colored shadow looks like.

```
.shadow{ text-shadow: 4px 4px 2px rgb(199, 176, 147) }
```

Border

The CSS property to change the border of an element to Android 4291276947 is called "border". The border property can be set on classes, ids or directly on the HTML element.

This example shows the color as border, it can be applied via the CSS property "border" or "border-color".

```
.border, #border, table{ border:4px solid rgb(199, 176, 147) }
```

If only the border color should be changed use the property `border-color`.

```
.border{ border-color:rgb(199, 176, 147) }
```

If you want to add a box shadow in that color use:

Here you see how a box with a 4 pixel `rgb(199, 176, 147)` colored shadow looks like.

```
.boxshadow{ -moz-box-shadow:4px 4px 4px  
4px rgb(199, 176, 147); -webkit-box-  
shadow:4px 4px 4px 4px rgb(199, 176, 147);  
box-shadow:4px 4px 4px 4px rgb(199, 176,  
147) }
```

Background

The CSS property to change the background color of an element to Android 4291276947 is called "background". The background property can be set on classes, ids or directly on the HTML element.

```
.background, #background, body{  
background: rgb(199, 176, 147) }
```

If only the background color should be changed can be used:

```
.background{ background-color: rgb(199,  
176, 147) }
```

This example shows the color as background, it is applied via the CSS property "background".

To optimize and compress your CSS code, you can use our [online CSS compressor and optimizer](#) based on csstidy. If you want to create a linear or radial gradient as background or border, check our [CSS Gradient Generator](#).

Hey! You found this booklet interesting? Support Converting Colors with the new Membership Option!

The pro membership hides all ads, plus gives you double the colors in the color bucket, and more awesome pro features!

[Learn more, Memberships starting at \\$2.50/m!](#)

**Follow me
on Twitter!**

@ConvertingColor