

Converting Colors

Android(4291277465)

Have a look what the booklet for
Android(4291277465) contains.

Android(4291277465)	3
<i>Conversions</i>	4
<i>Details</i>	6
<i>Harmonies</i>	11
<i>Previews</i>	23
<i>Color Blindness Simulation</i>	26
<i>CSS Examples</i>	29

Color

Android(4291277465)

Conversions

Conversions Part 1

Format	Color
Hex	C7B299
RGB	199, 178, 153
RGB Percent	78%, 70%, 60%
CMY	0.2196, 0.3020, 0.4000
CMYK	0.00, 0.11, 0.23, 0.22
HSL	33°, 29%, 69%
HSV	33°, 23%, 78%
XYZ	45.2234, 46.2828, 36.6869
YIQ	181.4290, 20.5410, -3.3230

Conversions

Conversions Part 2

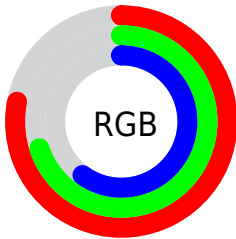
Format	Color
RYB	192, 199, 153
Decimal	13087385
CIELab	73.73, 3.58, 15.53
CIElCh	74, 15.941, 77.022
Yxy	46.2828, 0.3528, 0.3610
Android (android.graphics.Color)	4291277465 (0xFFC7B299)
YUV	181.4290, -14.0155, 15.4098
Hunter-Lab	68.0315, -0.3987, 15.6491

Details

The Android color **4291277465** is a light color, and the websafe version is hex **CCCC99**. A complement of this color would be **4288261831**, and the grayscale version is **4290164406**.

A 20% lighter version of the original color is **4294961871**, and **4287724902** is the 20% darker color. If you saturate the color by 10%, you get **4291275141**, and if you desaturate by 10%, it is **4291279789**.

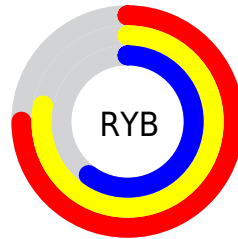
Distribution



Red (78%)

Green (70%)

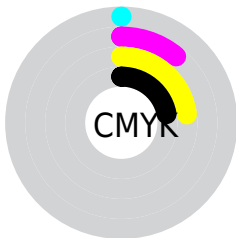
Blue (60%)



Red (75%)

Yellow (78%)

Blue (60%)

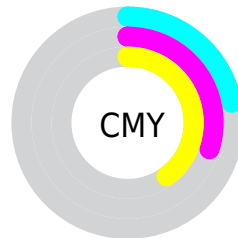


Cyan (0%)

Magenta (11%)

Yellow (23%)

Black (22%)



Cyan (22%)

Magenta (30%)

Yellow (40%)

Brightness & Saturation Gradients

These gradients show how the Android color 4291277465 changes by changing the brightness by 10 percent. The first figure shows a shift by +10% for each color and the second figure -10%.

Similar to the brightness gradients but the following saturation gradients show a change of the Android color 4291277465 by changing the saturation by 10% instead.



4291277465



4291277465

4294967295



4289435519



4294961871



4287724902



4294967276



4286014798



4284304695



4282725921



4281213196



4279765504



4278190080




4291277465



4291277465

 4291275141

 4291279789

 4291272817

 4291282113

 4291270493

 4291284437

 4291268169

 4291286761

 4291265846

 4291289085

 4291263266

 4291291647

 4291260942

 4291293951

 4291259392

 4291296255

 4291297279

Harmonies

Analogous

The Analogous color harmony consists of three colors that are next to each other on the color wheel.



4291931808



4291277465



4290295705

Triad

The Triadic color harmony groups three colors that are evenly spaced from another and form a triangle on the color wheel.



4291277465



4287676093



4290949065

Complementary

The Complementary color scheme is a pair of colors which are on the opposite of each other on the color wheel.



4291277465



4288261831

Split Complementary

Split-complementary colors differ from the complementary color scheme. The scheme consists of three colors, the original color and two neighbors of the complement color.



4289770705



4291277465



4287741130

Square

The Square scheme is like the rectangle color scheme, but the four colors are evenly spaced on the color wheel.



4291277465



4288200110



4288592081



4291800252

Rectangle

The Rectangle color scheme consists of four colors that form a rectangle on the color wheel.



4291277465



4289575582



4288592081



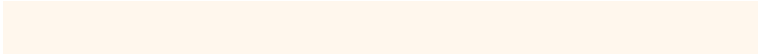
4290556109

Sweetspot

The Sweet Spot groups the original color and five complimentary colors.



4291277465



4294965229



4291271086



4286610293



4278190080



4286611584

Same Dimension

The Same Dimension uses a secret algorithm to generate beautiful new colors.



4291277465



4294958776



4291151769



4284702554



4288895232



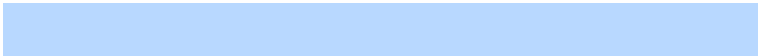
4280554240

Inverse Universe

The Inverse Universe completely reimagines the original color for something new.



4288261831



4290304255



4288387527



4284112483



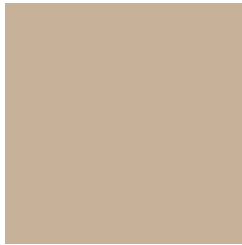
4278209443



4278194212

Previews

White Background



This preview shows how the Android color 4291277465 looks on a white background.

Color Contrast Check

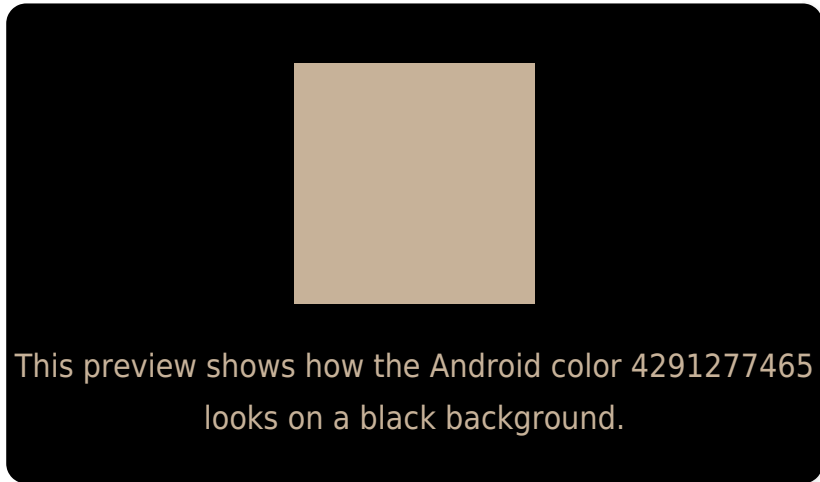
Large Text (above 18pt) WCAG AA × Fail

Any Text WCAG AA × Fail

Large Text (above 18pt) WCAG AAA × Fail

Any Text WCAG AAA × Fail

Black Background



Color Contrast Check

Large Text (above 18pt) WCAG AA ✓ Pass

Any Text WCAG AA ✓ Pass

Large Text (above 18pt) WCAG AAA ✓ Pass

Any Text WCAG AAA ✓ Pass

If you want to check with other color combinations, try the [Color Contrast Checker](#).

Android 4291277465 Background



This preview shows how black text looks on a background with the Android color 4291277465.



This preview shows how white text looks on a background with the Android color 4291277465.

Color Blindness Simulation

Color vision deficiency is a very complex topic, and I could not describe the different causes any better than Wikipedia does, so if you want to learn more, you should check out their [article about color blindness](#).


Dichromacy



Original Color
4291277465

Protanopia
4290753946

Deuteranopia
4291866266



Tritanopia
4291538363

Trichromacy



Original Color

4291277465

Protanomaly

4290950298

Deuteranomaly

4291669914

Tritanomaly

4291473327

Monochromacy



Original Color

4291277465

Achromatopsia

4290098613

Achromatomaly

4290557099

CSS Examples

Text

The CSS property to change the color of the text to Android 4291277465 is called "color". The color property can be set on classes, ids or directly on the HTML element.

This example shows how text in the color `rgb(199, 178, 153)` looks like.

```
.text, #text, p{  
    color:rgb(199, 178, 153)  
}
```

If you want to add a text shadow in that color use the text-shadow property, you can generate a text shadow directly with our [CSS Text Shadow Generator](#).

Here you see how black text with a 4 pixel rgb(199, 178, 153) colored shadow looks like.

```
.shadow{ text-shadow: 4px 4px 2px rgb(199, 178, 153) }
```

Border

The CSS property to change the border of an element to Android 4291277465 is called "border". The border property can be set on classes, ids or directly on the HTML element.

This example shows the color as border, it can be applied via the CSS property "border" or "border-color".

```
.border, #border, table{ border:4px solid rgb(199, 178, 153) }
```

If only the border color should be changed use the property `border-color`.

```
.border{ border-color:rgb(199, 178, 153) }
```

If you want to add a box shadow in that color use:

Here you see how a box with a 4 pixel `rgb(199, 178, 153)` colored shadow looks like.

```
.boxshadow{ -moz-box-shadow:4px 4px 4px  
4px rgb(199, 178, 153); -webkit-box-  
shadow:4px 4px 4px 4px rgb(199, 178, 153);  
box-shadow:4px 4px 4px 4px rgb(199, 178,  
153) }
```

Background

The CSS property to change the background color of an element to Android 4291277465 is called "background". The background property can be set on classes, ids or directly on the HTML element.

```
.background, #background, body{  
background: rgb(199, 178, 153) }
```

If only the background color should be changed can be used:

```
.background{ background-color: rgb(199,  
178, 153) }
```

This example shows the color as background, it is applied via the CSS property "background".

To optimize and compress your CSS code, you can use our [online CSS compressor and optimizer](#) based on csstidy. If you want to create a linear or radial gradient as background or border, check our [CSS Gradient Generator](#).

Hey! You found this booklet interesting? Support Converting Colors with the new Membership Option!

The pro membership hides all ads, plus gives you double the colors in the color bucket, and more awesome pro features!

[Learn more, Memberships starting at \\$2.50/m!](#)

**Follow me
on Twitter!**

@ConvertingColor