

# Converting Colors

Android(4291406753)

Have a look what the booklet for  
Android(4291406753) contains.

|  |    |
|--|----|
| <b>Android(4291406753)</b> .....               | 3  |
| <b><i>Conversions</i></b> .....                | 4  |
| <b><i>Details</i></b> .....                    | 6  |
| <b><i>Harmonies</i></b> .....                  | 11 |
| <b><i>Previews</i></b> .....                   | 23 |
| <b><i>Color Blindness Simulation</i></b> ..... | 26 |
| <b><i>CSS Examples</i></b> .....               | 29 |

# **Color**

**Android(4291406753)**

# Conversions

## Conversions Part 1

| Format      | Color                     |
|-------------|---------------------------|
| Hex         | C9ABA1                    |
| RGB         | 201, 171, 161             |
| RGB Percent | 79%, 67%, 63%             |
| CMY         | 0.2118, 0.3294, 0.3686    |
| CMYK        | 0.00, 0.15, 0.20, 0.21    |
| HSL         | 15°, 27%, 71%             |
| HSV         | 15°, 20%, 79%             |
| XYZ         | 45.0833, 44.1165, 39.8574 |
| YIQ         | 178.8300, 21.0900, 3.2500 |

# Conversions

## Conversions Part 2

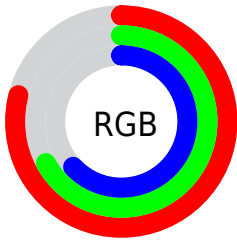
| <b>Format</b>                       | <b>Color</b>                  |
|-------------------------------------|-------------------------------|
| R <sub>Y</sub> B                    | 201, 174, 161                 |
| Decimal                             | 13216673                      |
| CIE Lab                             | 72.31, 9.31, 9.18             |
| CIE LCh                             | 72, 13.075, 44.614            |
| Yxy                                 | 44.1165, 0.3493,<br>0.3418    |
| Android<br>(android.graphics.Color) | 4291406753<br>(0xFFC9ABA1)    |
| YUV                                 | 178.8300, -8.7902,<br>19.4431 |
| Hunter-Lab                          | 66.4203, 4.9229,<br>10.9155   |

# Details

The Android color `4291406753` is a light color, and the websafe version is hex `CC9999`. A complement of this color would be `4288790473`, and the grayscale version is `4289967027`.

A 20% lighter version of the original color is `4294959832`, and `4287854445` is the 20% darker color. If you saturate the color by 10%, you get `4291402893`, and if you desaturate by 10%, it is `4291410613`.

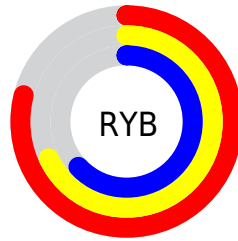
# Distribution



Red (79%)

Green (67%)

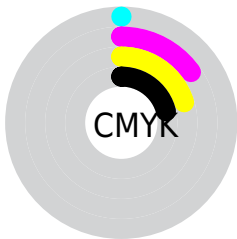
Blue (63%)



Red (79%)

Yellow (68%)

Blue (63%)

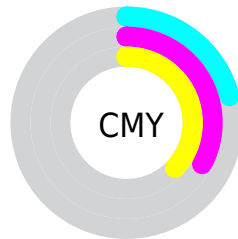


Cyan (0%)

Magenta (15%)

Yellow (20%)

Black (21%)



Cyan (21%)

Magenta (33%)

Yellow (37%)


# Brightness & Saturation Gradients

These gradients show how the Android color 4291406753 changes by changing the brightness by 10 percent. The first figure shows a shift by +10% for each color and the second figure -10%.

Similar to the brightness gradients but the following saturation gradients show a change of the Android color 4291406753 by changing the saturation by 10% instead.



 4291406753

 4291406753

4294967295

 4289564807

 4294959832


 4287854445

 4294967284

 4286078549

 4284433982

 4282855464


 4281342740

 4280025344

 4278190080

 4291406753

 4291406753

 4291402893

 4291410613

 4291399033

 4291414473

 4291395173

 4291418333

 4291391313

 4291422193

 4291387453

 4291426047

 4291383592

 4291428351

 4291379476

 4291375616

# Harmonies

## Analogous

The Analogous color harmony consists of three colors that are next to each other on the color wheel.



4291537324



4291406753



4290883227

# Triad

The Triadic color harmony groups three colors that are evenly spaced from another and form a triangle on the color wheel.



4291406753



4288395435



4289507528

# Complementary

The Complementary color scheme is a pair of colors which are on the opposite of each other on the color wheel.



4291406753



4288790473

# Split Complementary

Split-complementary colors differ from the complementary color scheme. The scheme consists of three colors, the original color and two neighbors of the complement color.



4288591048



4291406753



4287936695

# Square

The Square scheme is like the rectangle color scheme, but the four colors are evenly spaced on the color wheel.



4291406753



4289181344



4287936450



4290489538

# Rectangle

The Rectangle color scheme consists of four colors that form a rectangle on the color wheel.



4291406753



4290359706



4287936450



4289180361

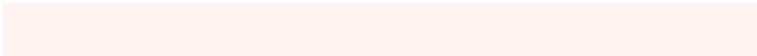


# Sweetspot

The Sweet Spot groups the original color and five complimentary colors.



4291406753



4294964464



4291404223



4286609783



4278190080



4286611584



# Same Dimension

The Same Dimension uses a secret algorithm to generate beautiful new colors.



4291406753



4294955458



4291411617



4284701786



4288882944



4280551680

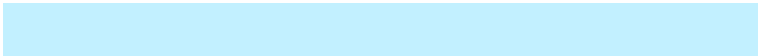


# Inverse Universe

The Inverse Universe completely reimagines the original color for something new.



4288790473



4290965759



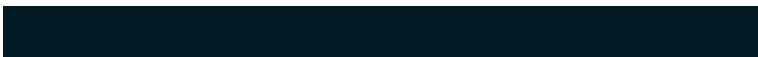
4288785353



4284113251



4278221475



4278197028



# Previews

## White Background



This preview shows how the Android color 4291406753 looks on a white background.

## Color Contrast Check

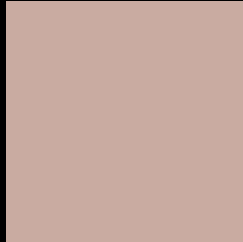
Large Text (above 18pt) WCAG AA × Fail

Any Text WCAG AA × Fail

Large Text (above 18pt) WCAG AAA × Fail

Any Text WCAG AAA × Fail

# Black Background



This preview shows how the Android color 4291406753 looks on a black background.

## Color Contrast Check

Large Text (above 18pt) WCAG AA ✓ Pass

Any Text WCAG AA ✓ Pass

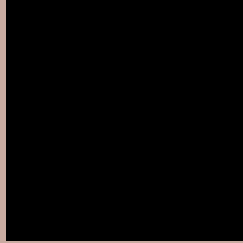
Large Text (above 18pt) WCAG AAA ✓ Pass

Any Text WCAG AAA ✓ Pass

If you want to check with other color combinations, try the [Color Contrast Checker](#).



# Android 4291406753 Background



This preview shows how black text looks on a background with the Android color 4291406753.



This preview shows how white text looks on a background with the Android color 4291406753.

# Color Blindness Simulation

Color vision deficiency is a very complex topic, and I could not describe the different causes any better than Wikipedia does, so if you want to learn more, you should check out their [article about color blindness](#).

## Dichromacy



**Original Color**  
4291406753

**Protanopia**  
4290294180

**Deuteranopia**  
4291406753



**Tritanopia**  
4291537077

# Trichromacy



**Original Color**  
4291406753

**Protanomaly**  
4290686883

**Deuteranomaly**  
4291406753

**Tritanomaly**  
4291471790

# Monochromacy



**Original Color**  
4291406753

**Achromatopsia**  
4289967027

**Achromatomaly**  
4290490540

# CSS Examples

## Text

The CSS property to change the color of the text to Android 4291406753 is called "color". The color property can be set on classes, ids or directly on the HTML element.

This example shows how text in the color `rgb(201, 171, 161)` looks like.

```
.text, #text, p{  
    color:rgb(201, 171, 161)  
}
```

If you want to add a text shadow in that color use the text-shadow property, you can generate a text shadow directly with our [CSS Text Shadow Generator](#).

Here you see how black text with a 4 pixel rgb(201, 171, 161) colored shadow looks like.

```
.shadow{ text-shadow: 4px 4px 2px rgb(201, 171, 161) }
```

## Border

The CSS property to change the border of an element to Android 4291406753 is called "border". The border property can be set on classes, ids or directly on the HTML element.

This example shows the color as border, it can be applied via the CSS property "border" or "border-color".

```
.border, #border, table{ border:4px solid rgb(201, 171, 161) }
```

If only the border color should be changed use the property `border-color`.

```
.border{ border-color:rgb(201, 171, 161) }
```

If you want to add a box shadow in that color use:

Here you see how a box with a 4 pixel `rgb(201, 171, 161)` colored shadow looks like.

```
.boxshadow{ -moz-box-shadow:4px 4px 4px  
4px rgb(201, 171, 161); -webkit-box-  
shadow:4px 4px 4px 4px rgb(201, 171, 161);  
box-shadow:4px 4px 4px 4px rgb(201, 171,  
161) }
```

# Background

The CSS property to change the background color of an element to Android 4291406753 is called "background". The background property can be set on classes, ids or directly on the HTML element.

```
.background, #background, body{  
background: rgb(201, 171, 161) }
```

If only the background color should be changed can be used:

```
.background{ background-color: rgb(201,  
171, 161) }
```

This example shows the color as background, it is applied via the CSS property "background".

To optimize and compress your CSS code, you can use our [online CSS compressor and optimizer](#) based on csstidy. If you want to create a linear or radial gradient as background or border, check our [CSS Gradient Generator](#).



Hey! You found this booklet interesting? Support Converting Colors with the new Membership Option!

The pro membership hides all ads, plus gives you double the colors in the color bucket, and more awesome pro features!

**[Learn more, Memberships starting at \\$2.50/m!](#)**

**Follow me  
on Twitter!**

@ConvertingColor