

Converting Colors

Android(4291407795)

Have a look what the booklet for
Android(4291407795) contains.

Android(4291407795)	3
<i>Conversions</i>	4
<i>Details</i>	6
<i>Harmonies</i>	11
<i>Previews</i>	23
<i>Color Blindness Simulation</i>	26
<i>CSS Examples</i>	29

Color

Android(4291407795)

Conversions

Conversions Part 1

Format	Color
Hex	C9AFB3
RGB	201, 175, 179
RGB Percent	79%, 69%, 70%
CMY	0.2118, 0.3137, 0.2980
CMYK	0.00, 0.13, 0.11, 0.21
HSL	351°, 19%, 74%
HSV	351°, 13%, 79%
XYZ	47.5540, 46.3321, 49.0845
YIQ	183.2300, 14.2120, 6.7560

Conversions

Conversions Part 2

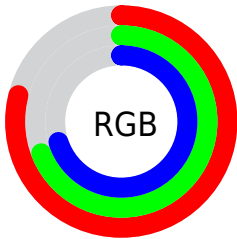
Format	Color
R_{YB}	201, 175, 179
Decimal	13217715
CIE _{Lab}	73.76, 10.04, 1.41
CIE _{LCh}	74, 10.135, 7.980
Yxy	46.3321, 0.3326, 0.3241
Android (android.graphics.Color)	4291407795 (0xFFC9AFB3)
YUV	183.2300, -2.0854, 15.5843
Hunter-Lab	68.0677, 5.5867, 4.8927

Details

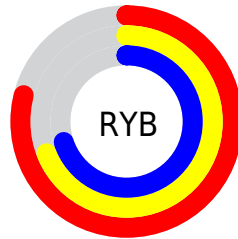
The Android color `4291407795` is a light color, and the websafe version is hex `CC9999`. A complement of this color would be `4289710533`, and the grayscale version is `4290230199`.

A 20% lighter version of the original color is `4294961131`, and `4287855486` is the 20% darker color. If you saturate the color by 10%, you get `4291402658`, and if you desaturate by 10%, it is `4291412932`.

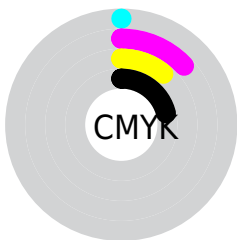
Distribution



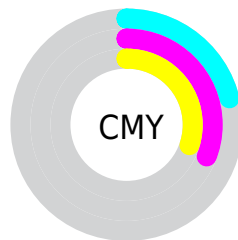
- Red (79%)
- Green (69%)
- Blue (70%)



- Red (79%)
- Yellow (69%)
- Blue (70%)



- Cyan (0%)
- Magenta (13%)
- Yellow (11%)
- Black (21%)



- Cyan (21%)
- Magenta (31%)
- Yellow (30%)

Brightness & Saturation Gradients

These gradients show how the Android color 4291407795 changes by changing the brightness by 10 percent. The first figure shows a shift by +10% for each color and the second figure -10%.

Similar to the brightness gradients but the following saturation gradients show a change of the Android color 4291407795 by changing the saturation by 10% instead.

 4291407795

 4291407795

4294967295

 4289631384

 4294961131

 4287855486

 4286145125

 4284500557

 4282921783


 4281409057

 4280092171

 4278190080

 4291407795

 4291407795

 4291402658

 4291412932

 4291397521

 4291418069

 4291392384

 4291423206

 4291387247

 4291428343


 4291382110

 4291428351

 4291376717

 4291371580

 4291366443

 4291362847

Harmonies

Analogous

The Analogous color harmony consists of three colors that are next to each other on the color wheel.



4291080380



4291407795



4291408042

Triad

The Triadic color harmony groups three colors that are evenly spaced from another and form a triangle on the color wheel.



4291407795



4289771686



4288985286

Complementary

The Complementary color scheme is a pair of colors which are on the opposite of each other on the color wheel.



4291407795



4289710533

Split Complementary

Split-complementary colors differ from the complementary color scheme. The scheme consists of three colors, the original color and two neighbors of the complement color.



4288658112



4291407795



4289116846

Square

The Square scheme is like the rectangle color scheme, but the four colors are evenly spaced on the color wheel.



4291407795



4290426275



4288658359



4289705415

Rectangle

The Rectangle color scheme consists of four colors that form a rectangle on the color wheel.



4291407795



4291211686



4288658359



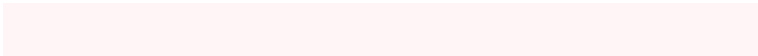
4288854469

Sweetspot

The Sweet Spot groups the original color and five complimentary colors.



4291407795



4294964726



4291145673



4286609786



4278190080



4286611584

Same Dimension

The Same Dimension uses a secret algorithm to generate beautiful new colors.



4291407795



4294956764



4291410095



4284701275



4288872473



4280549381

Inverse Universe

The Inverse Universe completely reimagines the original color for something new.



4291407795



4294956764



4289708233



4284701275



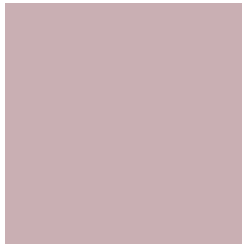
4288872473



4280549381

Previews

White Background



This preview shows how the Android color 4291407795 looks on a white background.

Color Contrast Check

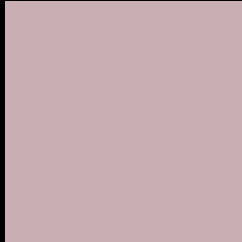
Large Text (above 18pt) WCAG AA × Fail

Any Text WCAG AA × Fail

Large Text (above 18pt) WCAG AAA × Fail

Any Text WCAG AAA × Fail

Black Background



This preview shows how the Android color 4291407795 looks on a black background.

Color Contrast Check

Large Text (above 18pt) WCAG AA ✓ Pass

Any Text WCAG AA ✓ Pass

Large Text (above 18pt) WCAG AAA ✓ Pass

Any Text WCAG AAA ✓ Pass

If you want to check with other color combinations, try the [Color Contrast Checker](#).

Android 4291407795 Background



This preview shows how black text looks on a background with the Android color 4291407795.



This preview shows how white text looks on a background with the Android color 4291407795.

Color Blindness Simulation

Color vision deficiency is a very complex topic, and I could not describe the different causes any better than Wikipedia does, so if you want to learn more, you should check out their [article about color blindness](#).


Dichromacy



Original Color
4291407795

Protanopia
4290294966

Deuteranopia
4291342259



Tritanopia
4291473083

Trichromacy



Original Color
4291407795

Protanomaly
4290687669

Deuteranomaly
4291342259

Tritanomaly
4291473080

Monochromacy



Original Color
4291407795

Achromatopsia
4290230199

Achromatomaly
4290688182

CSS Examples

Text

The CSS property to change the color of the text to Android 4291407795 is called "color". The color property can be set on classes, ids or directly on the HTML element.

This example shows how text in the color `rgb(201, 175, 179)` looks like.

```
.text, #text, p{  
    color:rgb(201, 175, 179)  
}
```

If you want to add a text shadow in that color use the text-shadow property, you can generate a text shadow directly with our [CSS Text Shadow Generator](#).

Here you see how black text with a 4 pixel rgb(201, 175, 179) colored shadow looks like.

```
.shadow{ text-shadow: 4px 4px 2px rgb(201, 175, 179) }
```

Border

The CSS property to change the border of an element to Android 4291407795 is called "border". The border property can be set on classes, ids or directly on the HTML element.

This example shows the color as border, it can be applied via the CSS property "border" or "border-color".

```
.border, #border, table{ border:4px solid rgb(201, 175, 179) }
```

If only the border color should be changed use the property `border-color`.

```
.border{ border-color:rgb(201, 175, 179) }
```

If you want to add a box shadow in that color use:

Here you see how a box with a 4 pixel `rgb(201, 175, 179)` colored shadow looks like.

```
.boxshadow{ -moz-box-shadow:4px 4px 4px  
4px rgb(201, 175, 179); -webkit-box-  
shadow:4px 4px 4px 4px rgb(201, 175, 179);  
box-shadow:4px 4px 4px 4px rgb(201, 175,  
179) }
```

Background

The CSS property to change the background color of an element to Android 4291407795 is called "background". The background property can be set on classes, ids or directly on the HTML element.

```
.background, #background, body{  
background: rgb(201, 175, 179) }
```

If only the background color should be changed can be used:

```
.background{ background-color: rgb(201,  
175, 179) }
```

This example shows the color as background, it is applied via the CSS property "background".

To optimize and compress your CSS code, you can use our [online CSS compressor and optimizer](#) based on csstidy. If you want to create a linear or radial gradient as background or border, check our [CSS Gradient Generator](#).

Hey! You found this booklet interesting? Support Converting Colors with the new Membership Option!

The pro membership hides all ads, plus gives you double the colors in the color bucket, and more awesome pro features!

[Learn more, Memberships starting at \\$2.50/m!](#)

**Follow me
on Twitter!**

@ConvertingColor