

Converting Colors

Android(4291408827)

Have a look what the booklet for
Android(4291408827) contains.

Android(4291408827)	3
<i>Conversions</i>	4
<i>Details</i>	6
<i>Harmonies</i>	11
<i>Previews</i>	23
<i>Color Blindness Simulation</i>	26
<i>CSS Examples</i>	29

Color

Android(4291408827)

Conversions

Conversions Part 1

Format	Color
Hex	C9B3BB
RGB	201, 179, 187
RGB Percent	79%, 70%, 73%
CMY	0.2118, 0.2980, 0.2667
CMYK	0.00, 0.11, 0.07, 0.21
HSL	338°, 17%, 75%
HSV	338°, 11%, 79%
XYZ	49.1771, 48.2456, 53.7341
YIQ	186.4900, 10.5440, 7.1520

Conversions

Conversions Part 2

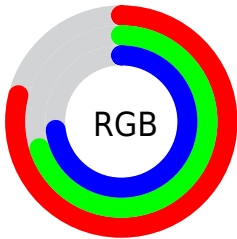
Format	Color
R_{YB}	201, 179, 187
Decimal	13218747
CIE Lab	74.98, 9.25, -1.19
CIE LCh	75, 9.324, 352.678
Yxy	48.2456, 0.3253, 0.3192
Android (android.graphics.Color)	4291408827 (0xFFC9B3BB)
YUV	186.4900, 0.2514, 12.7253
Hunter-Lab	69.4590, 4.8251, 2.7540

Details

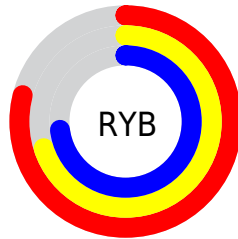
The Android color `4291408827` is a light color, and the websafe version is hex `CCCCCC`. A complement of this color would be `4289972673`, and the grayscale version is `4290427578`.

A 20% lighter version of the original color is `4294962163`, and `4287856262` is the 20% darker color. If you saturate the color by 10%, you get `4291403694`, and if you desaturate by 10%, it is `4291413960`.

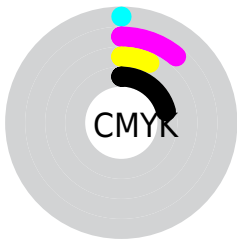
Distribution



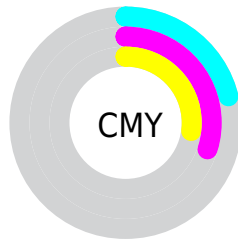
- Red (79%)
- Green (70%)
- Blue (73%)



- Red (79%)
- Yellow (70%)
- Blue (73%)



- Cyan (0%)
- Magenta (11%)
- Yellow (7%)
- Black (21%)



- Cyan (21%)
- Magenta (30%)
- Yellow (27%)

Brightness & Saturation Gradients

These gradients show how the Android color 4291408827 changes by changing the brightness by 10 percent. The first figure shows a shift by +10% for each color and the second figure -10%.

Similar to the brightness gradients but the following saturation gradients show a change of the Android color 4291408827 by changing the saturation by 10% instead.

 4291408827

 4291408827

4294967295

 4289632416

 4294962163

 4287856262

 4286145901


 4284501332

 4282922557


 4281475368


 4280093459

 4278190080

 4291408827

 4291408827

 4291403694

 4291413960

 4291398561

 4291419093

 4291393429

 4291424225

 4291388296

 4291428334

 4291383163

 4291428347

 4291377774

 4291428351

 4291372641

 4291367509

 4291362889

Harmonies

Analogous

The Analogous color harmony consists of three colors that are next to each other on the color wheel.



4290950595



4291408827



4291539890

Triad

The Triadic color harmony groups three colors that are evenly spaced from another and form a triangle on the color wheel.



4291408827



4290362025



4289117382

Complementary

The Complementary color scheme is a pair of colors which are on the opposite of each other on the color wheel.



4291408827



4289972673

Split Complementary

Split-complementary colors differ from the complementary color scheme. The scheme consists of three colors, the original color and two neighbors of the complement color.



4288921279



4291408827



4289707182

Square

The Square scheme is like the rectangle color scheme, but the four colors are evenly spaced on the color wheel.



4291408827



4290951080



4289183414



4289575625

Rectangle

The Rectangle color scheme consists of four colors that form a rectangle on the color wheel.



4291408827



4291474605



4289183414



4288986564

Sweetspot

The Sweet Spot groups the original color and five complimentary colors.



4291408827



4294965242



4290884553



4286610044



4278190080



4286611584

Same Dimension

The Same Dimension uses a secret algorithm to generate beautiful new colors.



4291408827



4294958826



4291409587



4284701277



4288872507



4280549389

Inverse Universe

The Inverse Universe completely reimagines the original color for something new.



4291408827



4294958826



4289971913



4284701277



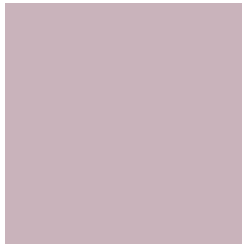
4288872507



4280549389

Previews

White Background



This preview shows how the Android color 4291408827 looks on a white background.

Color Contrast Check

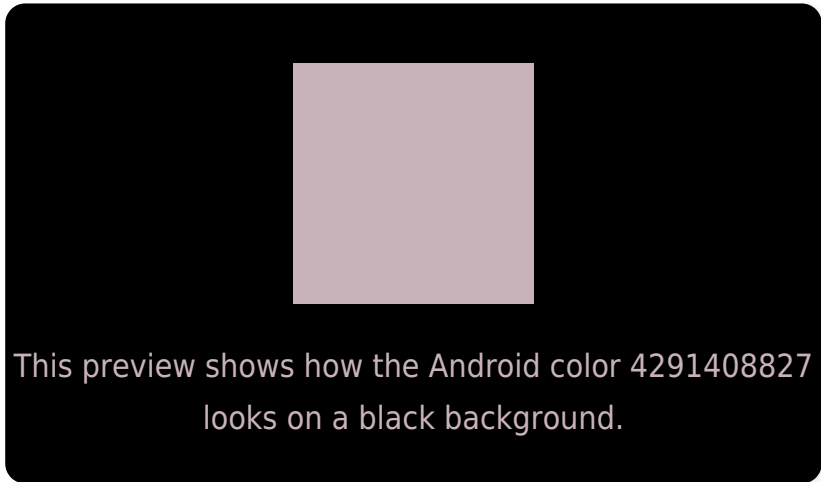
Large Text (above 18pt) WCAG AA × Fail

Any Text WCAG AA × Fail

Large Text (above 18pt) WCAG AAA × Fail

Any Text WCAG AAA × Fail

Black Background



Color Contrast Check

Large Text (above 18pt) WCAG AA ✓ Pass

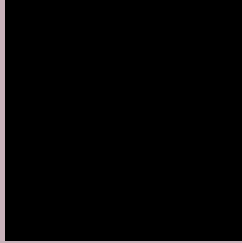
Any Text WCAG AA ✓ Pass

Large Text (above 18pt) WCAG AAA ✓ Pass

Any Text WCAG AAA ✓ Pass

If you want to check with other color combinations, try the [Color Contrast Checker](#).

Android 4291408827 Background



This preview shows how black text looks on a background with the Android color 4291408827.



This preview shows how white text looks on a background with the Android color 4291408827.

Color Blindness Simulation

Color vision deficiency is a very complex topic, and I could not describe the different causes any better than Wikipedia does, so if you want to learn more, you should check out their [article about color blindness](#).

Dichromacy



Original Color
4291408827

Protanopia
4290427070

Deuteranopia
4291408827



Tritanopia
4291474112

Trichromacy



Original Color
4291408827

Protanomaly
4290754237

Deuteranomaly
4291408827

Tritanomaly
4291474110

Monochromacy



Original Color
4291408827

Achromatopsia
4290427578

Achromatomaly
4290754490

CSS Examples

Text

The CSS property to change the color of the text to Android 4291408827 is called "color". The color property can be set on classes, ids or directly on the HTML element.

This example shows how text in the color `rgb(201, 179, 187)` looks like.

```
.text, #text, p{  
    color:rgb(201, 179, 187)  
}
```

If you want to add a text shadow in that color use the text-shadow property, you can generate a text shadow directly with our [CSS Text Shadow Generator](#).

Here you see how black text with a 4 pixel rgb(201, 179, 187) colored shadow looks like.

```
.shadow{ text-shadow: 4px 4px 2px rgb(201, 179, 187) }
```

Border

The CSS property to change the border of an element to Android 4291408827 is called "border". The border property can be set on classes, ids or directly on the HTML element.

This example shows the color as border, it can be applied via the CSS property "border" or "border-color".

```
.border, #border, table{ border:4px solid rgb(201, 179, 187) }
```

If only the border color should be changed use the property `border-color`.

```
.border{ border-color:rgb(201, 179, 187) }
```

If you want to add a box shadow in that color use:

Here you see how a box with a 4 pixel `rgb(201, 179, 187)` colored shadow looks like.

```
.boxshadow{ -moz-box-shadow:4px 4px 4px  
4px rgb(201, 179, 187); -webkit-box-  
shadow:4px 4px 4px 4px rgb(201, 179, 187);  
box-shadow:4px 4px 4px 4px rgb(201, 179,  
187) }
```

Background

The CSS property to change the background color of an element to Android 4291408827 is called "background". The background property can be set on classes, ids or directly on the HTML element.

```
.background, #background, body{  
background: rgb(201, 179, 187) }
```

If only the background color should be changed can be used:

```
.background{ background-color: rgb(201,  
179, 187) }
```

This example shows the color as background, it is applied via the CSS property "background".

To optimize and compress your CSS code, you can use our [online CSS compressor and optimizer](#) based on csstidy. If you want to create a linear or radial gradient as background or border, check our [CSS Gradient Generator](#).

Hey! You found this booklet interesting? Support Converting Colors with the new Membership Option!

The pro membership hides all ads, plus gives you double the colors in the color bucket, and more awesome pro features!

[Learn more, Memberships starting at \\$2.50/m!](#)

**Follow me
on Twitter!**

@ConvertingColor