

# Converting Colors

Android(4291459960)

Have a look what the booklet for  
Android(4291459960) contains.

<b>Android(4291459960)</b> .....	3
<b><i>Conversions</i></b> .....	4
<b><i>Details</i></b> .....	6
<b><i>Harmonies</i></b> .....	11
<b><i>Previews</i></b> .....	23
<b><i>Color Blindness Simulation</i></b> .....	26
<b><i>CSS Examples</i></b> .....	29

**Color**

**Android(4291459960)**

# Conversions

## Conversions Part 1

<b>Format</b>	<b>Color</b>
Hex	CA7B78
RGB	202, 123, 120
RGB Percent	79%, 48%, 47%
CMY	0.2078, 0.5176, 0.5294
CMYK	0.00, 0.39, 0.41, 0.21
HSL	2°, 44%, 63%
HSV	2°, 41%, 79%
XYZ	34.8302, 28.0785, 21.3532
YIQ	146.2790, 48.0470, 15.8150

# Conversions

## Conversions Part 2

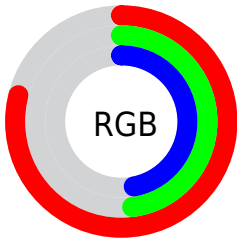
<b>Format</b>	<b>Color</b>
<b>RYB</b>	202, 123, 120
Decimal	13269880
CIELab	59.96, 30.39, 14.77
CIELCh	60, 33.788, 25.916
Yxy	28.0785, 0.4134, 0.3332
Android (android.graphics.Color)	4291459960 (0xFFCA7B78)
YUV	146.2790, -12.9555, 48.8673
Hunter-Lab	52.9892, 24.5985, 13.2001

# Details

The Android color **4291459960** is a dark color, and the websafe version is hex **CC6666**. A complement of this color would be **4286105546**, and the grayscale version is **4287795858**.

A 20% lighter version of the original color is **4294946988**, and **4287711560** is the 20% darker color. If you saturate the color by 10%, you get **4291455076**, and if you desaturate by 10%, it is **4291464844**.

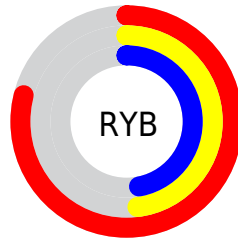
# Distribution



Red (79%)

Green (48%)

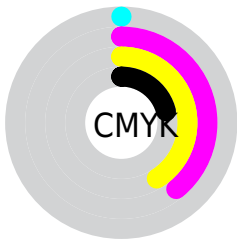
Blue (47%)



Red (79%)

Yellow (48%)

Blue (47%)

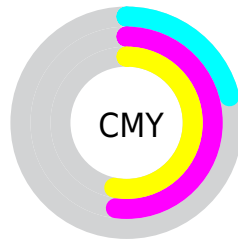


Cyan (0%)

Magenta (39%)

Yellow (41%)

Black (21%)



Cyan (21%)

Magenta (52%)

Yellow (53%)

# Brightness & Saturation Gradients

These gradients show how the Android color 4291459960 changes by changing the brightness by 10 percent. The first figure shows a shift by +10% for each color and the second figure -10%.

Similar to the brightness gradients but the following saturation gradients show a change of the Android color 4291459960 by changing the saturation by 10% instead.



 4291459960

 4291459960

4294967295

 4289552735

 4294946988

 4287711560

 4294954184

 4285935921


 4294961636

 4284160284

 4282449922

 4281008129

 4278190080


 4291459960

 4291459960

 4291455076

 4291464844

 4291449936

 4291469984

 4291445051

 4291474869

 4291439911

 4291480009

 4291435027

 4291484893

 4291430144

 4291490033

 4291493887

# Harmonies

## Analogous

The Analogous color harmony consists of three colors that are next to each other on the color wheel.



4291197590



4291459960



4290741088

# Triad

The Triadic color harmony groups three colors that are evenly spaced from another and form a triangle on the color wheel.



4291459960



4284980590



4284388811

# Complementary

The Complementary color scheme is a pair of colors which are on the opposite of each other on the color wheel.



4291459960



4286105546

# Split Complementary

Split-complementary colors differ from the complementary color scheme. The scheme consists of three colors, the original color and two neighbors of the complement color.



4280720577



4291459960



4282294411

# Square

The Square scheme is like the rectangle color scheme, but the four colors are evenly spaced on the color wheel.



4291459960



4287272794



4279083177



4287531718

# Rectangle

The Rectangle color scheme consists of four colors that form a rectangle on the color wheel.



4291459960



4289759831



4279083177



4283209930

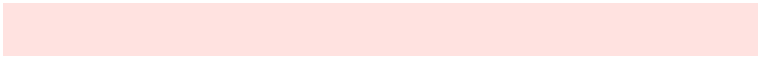


# Sweetspot

The Sweet Spot groups the original color and five complimentary colors.



4291459960



4294959840



4291459271



4286606958



4278190080



4286611584



# Same Dimension

The Same Dimension uses a secret algorithm to generate beautiful new colors.



4291459960



4294936450



4291470456



4284898396



4289070592



4280680704



# Inverse Universe

The Inverse Universe completely reimagines the original color for something new.



4286105546



4286774015



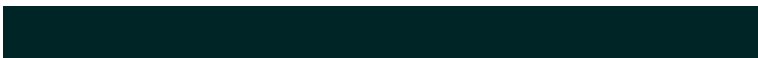
4286095050



4284245606



4278231206

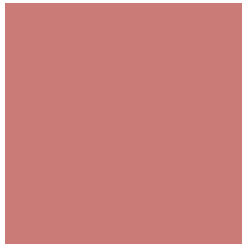


4278199590



# Previews

## White Background



This preview shows how the Android color 4291459960 looks on a white background.

## Color Contrast Check

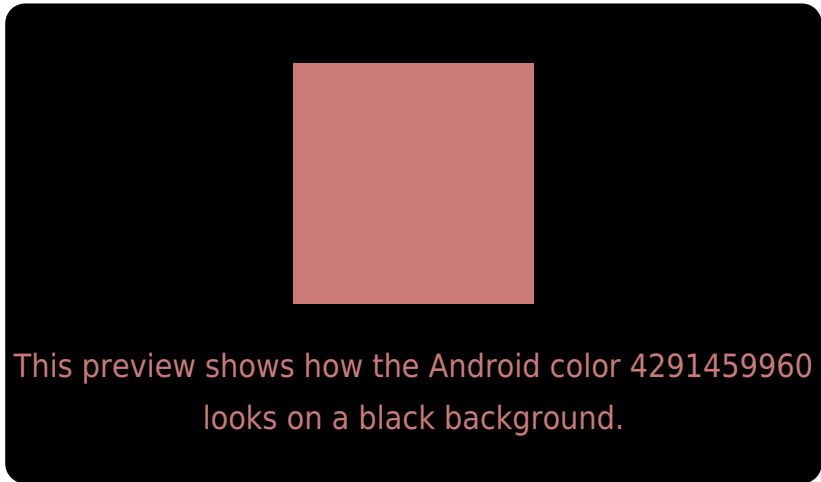
Large Text (above 18pt) WCAG AA ✓ Pass

Any Text WCAG AA ✗ Fail

Large Text (above 18pt) WCAG AAA ✗ Fail

Any Text WCAG AAA ✗ Fail

# Black Background



## Color Contrast Check

Large Text (above 18pt) WCAG AA ✓ Pass

Any Text WCAG AA ✓ Pass

Large Text (above 18pt) WCAG AAA ✓ Pass

Any Text WCAG AAA × Fail

If you want to check with other color combinations, try the [Color Contrast Checker](#).



# Android 4291459960 Background



This preview shows how black text looks on a background with the Android color 4291459960.



This preview shows how white text looks on a background with the Android color 4291459960.

# Color Blindness Simulation

Color vision deficiency is a very complex topic, and I could not describe the different causes any better than Wikipedia does, so if you want to learn more, you should check out their [article about color blindness](#).

## Dichromacy



**Original Color**  
[4291459960](#)

**Protanopia**  
[4288123011](#)

**Deuteranopia**  
[4289235829](#)



# Trichromacy



**Original Color**  
4291459960

**Protanomaly**  
4289366143

**Deuteranomaly**  
4290020726

**Tritanomaly**  
4291525246

# Monochromacy



**Original Color**  
4291459960

**Achromatopsia**  
4287795858

**Achromatomaly**  
4289104521

# CSS Examples

## Text

The CSS property to change the color of the text to Android 4291459960 is called "color". The color property can be set on classes, ids or directly on the HTML element.

This example shows how text in the color `rgb(202, 123, 120)` looks like.

```
.text, #text, p{  
    color:rgb(202, 123, 120)  
}
```

If you want to add a text shadow in that color use the text-shadow property, you can generate a text shadow directly with our [CSS Text Shadow Generator](#).

Here you see how black text with a 4 pixel rgb(202, 123, 120) colored shadow looks like.

```
.shadow{ text-shadow: 4px 4px 2px rgb(202, 123, 120) }
```

## Border

The CSS property to change the border of an element to Android 4291459960 is called "border". The border property can be set on classes, ids or directly on the HTML element.

This example shows the color as border, it can be applied via the CSS property "border" or "border-color".

```
.border, #border, table{ border:4px solid rgb(202, 123, 120) }
```

If only the border color should be changed use the property `border-color`.

```
.border{ border-color:rgb(202, 123, 120) }
```

If you want to add a box shadow in that color use:

Here you see how a box with a 4 pixel `rgb(202, 123, 120)` colored shadow looks like.

```
.boxshadow{ -moz-box-shadow:4px 4px 4px  
4px rgb(202, 123, 120); -webkit-box-  
shadow:4px 4px 4px 4px rgb(202, 123, 120);  
box-shadow:4px 4px 4px 4px rgb(202, 123,  
120) }
```

# Background

The CSS property to change the background color of an element to Android 4291459960 is called "background". The background property can be set on classes, ids or directly on the HTML element.

```
.background, #background, body{  
background: rgb(202, 123, 120) }
```

If only the background color should be changed can be used:

```
.background{ background-color: rgb(202,  
123, 120) }
```

This example shows the color as background, it is applied via the CSS property "background".

To optimize and compress your CSS code, you can use our [online CSS compressor and optimizer](#) based on csstidy. If you want to create a linear or radial gradient as background or border, check our [CSS Gradient Generator](#).



Hey! You found this booklet interesting? Support Converting Colors with the new Membership Option!

The pro membership hides all ads, plus gives you double the colors in the color bucket, and more awesome pro features!

**[Learn more, Memberships starting at \\$2.50/m!](#)**

**Follow me  
on Twitter!**

@ConvertingColor