

Converting Colors

Android(4291465611)

Have a look what the booklet for
Android(4291465611) contains.

Android(4291465611)	3
<i>Conversions</i>	4
<i>Details</i>	6
<i>Harmonies</i>	11
<i>Previews</i>	23
<i>Color Blindness Simulation</i>	26
<i>CSS Examples</i>	29

Color

Android(4291465611)

Conversions

Conversions Part 1

Format	Color
Hex	CA918B
RGB	202, 145, 139
RGB Percent	79%, 57%, 55%
CMY	0.2078, 0.4314, 0.4549
CMYK	0.00, 0.28, 0.31, 0.21
HSL	6°, 37%, 67%
HSV	6°, 31%, 79%
XYZ	39.1427, 34.6714, 29.0553
YIQ	161.3590, 35.8980, 10.2180

Conversions

Conversions Part 2

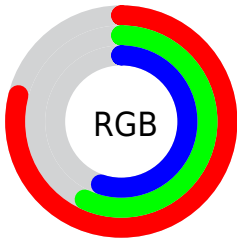
Format	Color
R_{YB}	202, 146, 139
Decimal	13275531
CIE _{Lab}	65.49, 20.74, 11.74
CIE _{LCh}	65, 23.833, 29.518
Yxy	34.6714, 0.3805, 0.3370
Android (android.graphics.Color)	4291465611 (0xFFCA918B)
YUV	161.3590, -11.0230, 35.6422
Hunter-Lab	58.8825, 15.6154, 11.9613

Details

The Android color `4291465611` is a light color, and the websafe version is hex `CC9999`. A complement of this color would be `4287349962`, and the grayscale version is `4288782753`.

A 20% lighter version of the original color is `4294952896`, and `4287782489` is the 20% darker color. If you saturate the color by 10%, you get `4291460983`, and if you desaturate by 10%, it is `4291470239`.

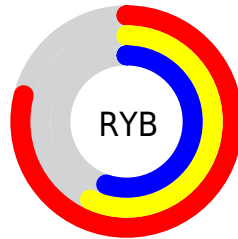
Distribution



Red (79%)

Green (57%)

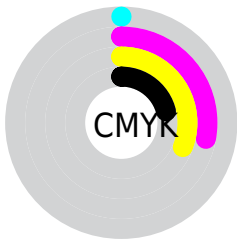
Blue (55%)



Red (79%)

Yellow (57%)

Blue (55%)

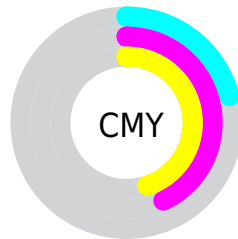


Cyan (0%)

Magenta (28%)

Yellow (31%)

Black (21%)



Cyan (21%)

Magenta (43%)

Yellow (45%)

Brightness & Saturation Gradients

These gradients show how the Android color 4291465611 changes by changing the brightness by 10 percent. The first figure shows a shift by +10% for each color and the second figure -10%.

Similar to the brightness gradients but the following saturation gradients show a change of the Android color 4291465611 by changing the saturation by 10% instead.



4291465611



4291465611

4294967295



4289623922



4294952896



4287782489



4294960092



4286072386



4294967289



4284362540



4282652951



4281139712



4278386688



4278190080



4291465611



4291465611

 4291460983

 4291470239

 4291456099

 4291475123

 4291451470

 4291479752

 4291446842

 4291484380

 4291442214

 4291489008

 4291437330

 4291493887

 4291433216

Harmonies

Analogous

The Analogous color harmony consists of three colors that are next to each other on the color wheel.



4291334304



4291465611



4290877051

Triad

The Triadic color harmony groups three colors that are evenly spaced from another and form a triangle on the color wheel.



4291465611



4286622089



4286882249

Complementary

The Complementary color scheme is a pair of colors which are on the opposite of each other on the color wheel.



4291465611



4287349962

Split Complementary

Split-complementary colors differ from the complementary color scheme. The scheme consists of three colors, the original color and two neighbors of the complement color.



4285179843



4291465611



4285180830

Square

The Square scheme is like the rectangle color scheme, but the four colors are evenly spaced on the color wheel.



4291465611



4288193658



4284525235



4288846532

Rectangle

The Rectangle color scheme consists of four colors that form a rectangle on the color wheel.



4291465611



4290157429



4284525235



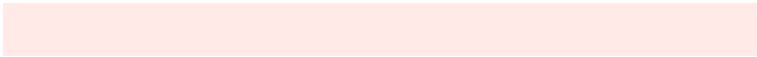
4286292936

Sweetspot

The Sweet Spot groups the original color and five complimentary colors.



4291465611



4294961896



4291464133



4286608241



4278190080



4286611584

Same Dimension

The Same Dimension uses a secret algorithm to generate beautiful new colors.



4291465611



4294945441



4291473547



4284898652



4289073152



4280681472

Inverse Universe

The Inverse Universe completely reimagines the original color for something new.



4287349962



4288804607



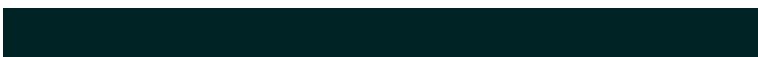
4287342026



4284245350



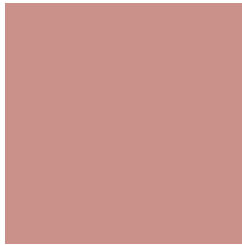
4278228646



4278199078

Previews

White Background



This preview shows how the Android color 4291465611 looks on a white background.

Color Contrast Check

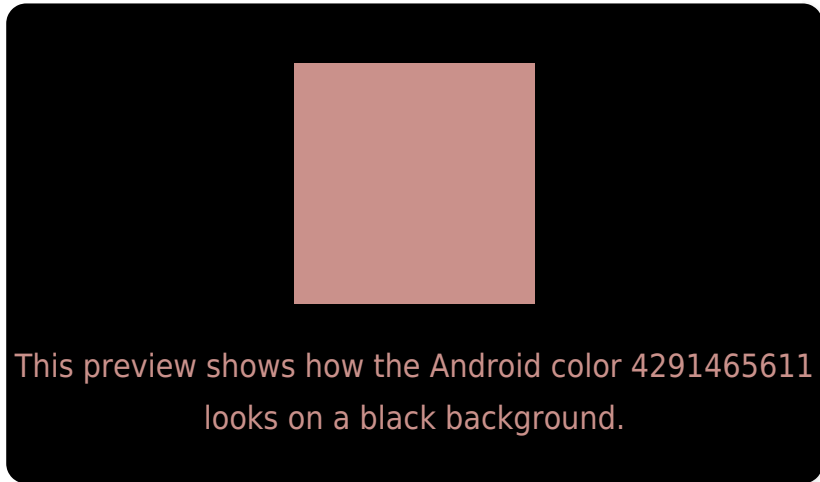
Large Text (above 18pt) WCAG AA × Fail

Any Text WCAG AA × Fail

Large Text (above 18pt) WCAG AAA × Fail

Any Text WCAG AAA × Fail

Black Background



Color Contrast Check

Large Text (above 18pt) WCAG AA ✓ Pass

Any Text WCAG AA ✓ Pass

Large Text (above 18pt) WCAG AAA ✓ Pass

Any Text WCAG AAA ✓ Pass

If you want to check with other color combinations, try the [Color Contrast Checker](#).

Android 4291465611 Background



This preview shows how black text looks on a background with the Android color 4291465611.



This preview shows how white text looks on a background with the Android color 4291465611.

Color Blindness Simulation

Color vision deficiency is a very complex topic, and I could not describe the different causes any better than Wikipedia does, so if you want to learn more, you should check out their [article about color blindness](#).


Dichromacy



Original Color
4291465611

Protanopia
4289044370

Deuteranopia
4290222473



Tritanopia
4291596186

Trichromacy



Original Color
4291465611

Protanomaly
4289895055

Deuteranomaly
4290680458

Tritanomaly
4291530901

Monochromacy



Original Color
4291465611

Achromatopsia
4288782753

Achromatomaly
4289764249

CSS Examples

Text

The CSS property to change the color of the text to Android 4291465611 is called "color". The color property can be set on classes, ids or directly on the HTML element.

This example shows how text in the color `rgb(202, 145, 139)` looks like.

```
.text, #text, p{  
    color:rgb(202, 145, 139)  
}
```

If you want to add a text shadow in that color use the text-shadow property, you can generate a text shadow directly with our [CSS Text Shadow Generator](#).

Here you see how black text with a 4 pixel rgb(202, 145, 139) colored shadow looks like.

```
.shadow{ text-shadow: 4px 4px 2px rgb(202, 145, 139) }
```

Border

The CSS property to change the border of an element to Android 4291465611 is called "border". The border property can be set on classes, ids or directly on the HTML element.

This example shows the color as border, it can be applied via the CSS property "border" or "border-color".

```
.border, #border, table{ border:4px solid rgb(202, 145, 139) }
```

If only the border color should be changed use the property `border-color`.

```
.border{ border-color:rgb(202, 145, 139) }
```

If you want to add a box shadow in that color use:

Here you see how a box with a 4 pixel `rgb(202, 145, 139)` colored shadow looks like.

```
.boxshadow{ -moz-box-shadow:4px 4px 4px  
4px rgb(202, 145, 139); -webkit-box-  
shadow:4px 4px 4px 4px rgb(202, 145, 139);  
box-shadow:4px 4px 4px 4px rgb(202, 145,  
139) }
```

Background

The CSS property to change the background color of an element to Android 4291465611 is called "background". The background property can be set on classes, ids or directly on the HTML element.

```
.background, #background, body{  
background: rgb(202, 145, 139) }
```

If only the background color should be changed can be used:

```
.background{ background-color: rgb(202,  
145, 139) }
```

This example shows the color as background, it is applied via the CSS property "background".

To optimize and compress your CSS code, you can use our [online CSS compressor and optimizer](#) based on csstidy. If you want to create a linear or radial gradient as background or border, check our [CSS Gradient Generator](#).

Hey! You found this booklet interesting? Support Converting Colors with the new Membership Option!

The pro membership hides all ads, plus gives you double the colors in the color bucket, and more awesome pro features!

[Learn more, Memberships starting at \\$2.50/m!](#)

**Follow me
on Twitter!**

@ConvertingColor