

Converting Colors

Android(4291468140)

Have a look what the booklet for
Android(4291468140) contains.

Android(4291468140)	3
<i>Conversions</i>	4
<i>Details</i>	6
<i>Harmonies</i>	11
<i>Previews</i>	23
<i>Color Blindness Simulation</i>	26
<i>CSS Examples</i>	29

Color

Android(4291468140)

Conversions

Conversions Part 1

Format	Color
Hex	CA9B6C
RGB	202, 155, 108
RGB Percent	79%, 61%, 42%
CMY	0.2078, 0.3922, 0.5765
CMYK	0.00, 0.23, 0.47, 0.21
HSL	30°, 47%, 61%
HSV	30°, 47%, 79%
XYZ	38.7852, 37.0820, 19.3007
YIQ	163.6950, 43.0990, -4.6530

Conversions

Conversions Part 2

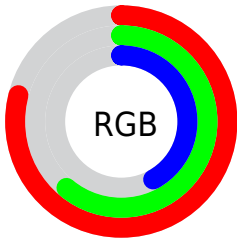
Format	Color
RYB	202, 202, 108
Decimal	13278060
CIELab	67.34, 11.64, 31.34
CIElCh	67, 33.432, 69.616
Yxy	37.0820, 0.4075, 0.3896
Android (android.graphics.Color)	4291468140 (0xFFCA9B6C)
YUV	163.6950, -27.4576, 33.5935
Hunter-Lab	60.8950, 7.1241, 23.8345

Details

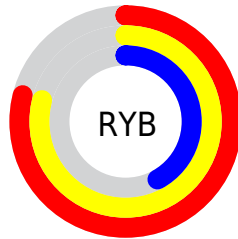
The Android color **4291468140** is a light color, and the websafe version is hex **CC9966**. A complement of this color would be **4285307850**, and the grayscale version is **4288980132**.

A 20% lighter version of the original color is **4294955424**, and **4287785020** is the 20% darker color. If you saturate the color by 10%, you get **4291465560**, and if you desaturate by 10%, it is **4291470720**.

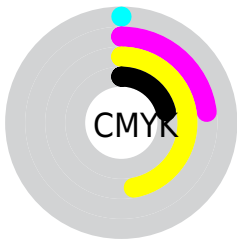
Distribution



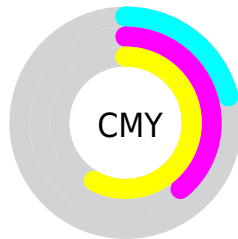
- Red (79%)
- Green (61%)
- Blue (42%)



- Red (79%)
- Yellow (79%)
- Blue (42%)



- Cyan (0%)
- Magenta (23%)
- Yellow (47%)
- Black (21%)



- Cyan (21%)
- Magenta (39%)
- Yellow (58%)

Brightness & Saturation Gradients

These gradients show how the Android color 4291468140 changes by changing the brightness by 10 percent. The first figure shows a shift by +10% for each color and the second figure -10%.

Similar to the brightness gradients but the following saturation gradients show a change of the Android color 4291468140 by changing the saturation by 10% instead.

 4291468140

 4291468140

4294967295

 4289626451

 4294955424

 4287785020

 4294962875

 4285943845

 4294967255

 4284233998

 4294967284

 4282589952

 4280880896

 4278190080

 4291468140

 4291468140

 4291465560

 4291470720

4291462980

4291473300

4291460399

4291475881

4291457819

4291478461

4291455239

4291481297

4291454208

4291483877

4291486457

4291489023

4291491583

Harmonies

Analogous

The Analogous color harmony consists of three colors that are next to each other on the color wheel.



4292579967



4291468140



4289701224

Triad

The Triadic color harmony groups three colors that are evenly spaced from another and form a triangle on the color wheel.



4291468140



4282758317



4290025938

Complementary

The Complementary color scheme is a pair of colors which are on the opposite of each other on the color wheel.



4291468140



4285307850

Split Complementary

Split-complementary colors differ from the complementary color scheme. The scheme consists of three colors, the original color and two neighbors of the complement color.



4287276255



4291468140



4281840329

Square

The Square scheme is like the rectangle color scheme, but the four colors are evenly spaced on the color wheel.



4291468140



4285117326



4284067292



4291989690

Rectangle

The Rectangle color scheme consists of four colors that form a rectangle on the color wheel.



4291468140



4288260975



4284067292



4289174744

Sweetspot

The Sweet Spot groups the original color and five complimentary colors.



4291468140



4294962651



4291456155



4286608746



4278190080



4286611584

Same Dimension

The Same Dimension uses a secret algorithm to generate beautiful new colors.



4291468140



4294948976



4291480172



4284899676



4289090304



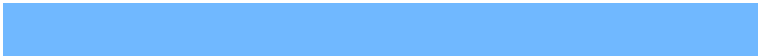
4280685312

Inverse Universe

The Inverse Universe completely reimagines the original color for something new.



4285307850



4285577471



4285295818



4284244326



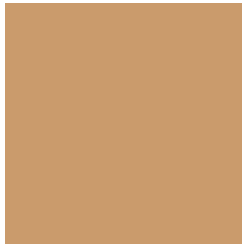
4278211494



4278194982

Previews

White Background



This preview shows how the Android color 4291468140 looks on a white background.

Color Contrast Check

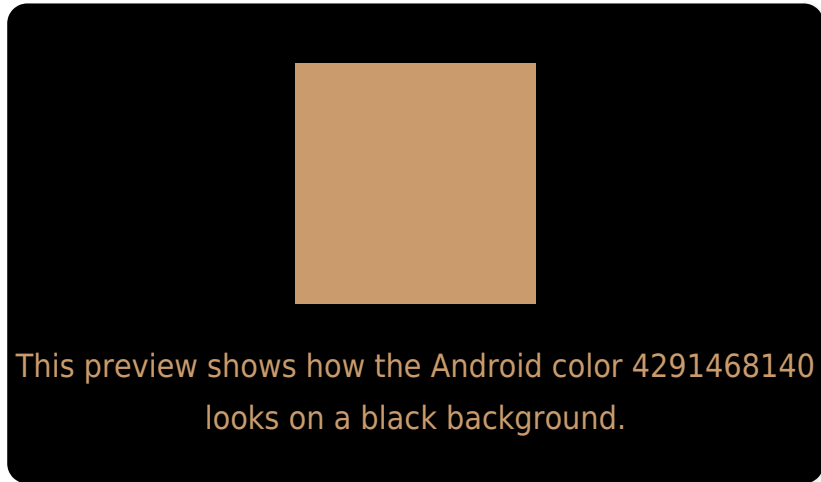
Large Text (above 18pt) WCAG AA × Fail

Any Text WCAG AA × Fail

Large Text (above 18pt) WCAG AAA × Fail

Any Text WCAG AAA × Fail

Black Background



Color Contrast Check

Large Text (above 18pt) WCAG AA ✓ Pass

Any Text WCAG AA ✓ Pass

Large Text (above 18pt) WCAG AAA ✓ Pass

Any Text WCAG AAA ✓ Pass

If you want to check with other color combinations, try the [Color Contrast Checker](#).

Android 4291468140 Background



This preview shows how black text looks on a background with the Android color 4291468140.



This preview shows how white text looks on a background with the Android color 4291468140.

Color Blindness Simulation

Color vision deficiency is a very complex topic, and I could not describe the different causes any better than Wikipedia does, so if you want to learn more, you should check out their [article about color blindness](#).


Dichromacy



Original Color
4291468140

Protanopia
4289897584

Deuteranopia
4291140972



Tritanopia
4291794080

Trichromacy



Original Color
4291468140

Protanomaly
4290486639

Deuteranomaly
4291271788

Tritanomaly
4291663757

Monochromacy



Original Color
4291468140

Achromatopsia
4288980132

Achromatomaly
4289896848

CSS Examples

Text

The CSS property to change the color of the text to Android 4291468140 is called "color". The color property can be set on classes, ids or directly on the HTML element.

This example shows how text in the color `rgb(202, 155, 108)` looks like.

```
.text, #text, p{  
    color:rgb(202, 155, 108)  
}
```

If you want to add a text shadow in that color use the text-shadow property, you can generate a text shadow directly with our [CSS Text Shadow Generator](#).

Here you see how black text with a 4 pixel rgb(202, 155, 108) colored shadow looks like.

```
.shadow{ text-shadow: 4px 4px 2px rgb(202, 155, 108) }
```

Border

The CSS property to change the border of an element to Android 4291468140 is called "border". The border property can be set on classes, ids or directly on the HTML element.

This example shows the color as border, it can be applied via the CSS property "border" or "border-color".

```
.border, #border, table{ border:4px solid rgb(202, 155, 108) }
```

If only the border color should be changed use the property `border-color`.

```
.border{ border-color:rgb(202, 155, 108) }
```

If you want to add a box shadow in that color use:

Here you see how a box with a 4 pixel `rgb(202, 155, 108)` colored shadow looks like.

```
.boxshadow{ -moz-box-shadow:4px 4px 4px  
4px rgb(202, 155, 108); -webkit-box-  
shadow:4px 4px 4px 4px rgb(202, 155, 108);  
box-shadow:4px 4px 4px 4px rgb(202, 155,  
108) }
```

Background

The CSS property to change the background color of an element to Android 4291468140 is called "background". The background property can be set on classes, ids or directly on the HTML element.

```
.background, #background, body{  
background: rgb(202, 155, 108) }
```

If only the background color should be changed can be used:

```
.background{ background-color: rgb(202,  
155, 108) }
```

This example shows the color as background, it is applied via the CSS property "background".

To optimize and compress your CSS code, you can use our [online CSS compressor and optimizer](#) based on csstidy. If you want to create a linear or radial gradient as background or border, check our [CSS Gradient Generator](#).

Hey! You found this booklet interesting? Support Converting Colors with the new Membership Option!

The pro membership hides all ads, plus gives you double the colors in the color bucket, and more awesome pro features!

[Learn more, Memberships starting at \\$2.50/m!](#)

**Follow me
on Twitter!**

@ConvertingColor