

Converting Colors

Android(4291469732)

Have a look what the booklet for
Android(4291469732) contains.

Android(4291469732)	3
<i>Conversions</i>	4
<i>Details</i>	6
<i>Harmonies</i>	11
<i>Previews</i>	23
<i>Color Blindness Simulation</i>	26
<i>CSS Examples</i>	29

Color

Android(4291469732)

Conversions

Conversions Part 1

Format	Color
Hex	CAA1A4
RGB	202, 161, 164
RGB Percent	79%, 63%, 64%
CMY	0.2078, 0.3686, 0.3569
CMYK	0.00, 0.20, 0.19, 0.21
HSL	356°, 28%, 71%
HSV	356°, 20%, 79%
XYZ	43.8028, 40.7266, 40.6743
YIQ	173.6010, 23.4730, 9.6250

Conversions

Conversions Part 2

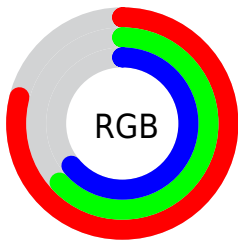
Format	Color
R _Y B	202, 161, 164
Decimal	13279652
CIE Lab	69.98, 15.59, 4.21
CIE LCh	70, 16.148, 15.105
Yxy	40.7266, 0.3499, 0.3253
Android (android.graphics.Color)	4291469732 (0xFFCAA1A4)
YUV	173.6010, -4.7333, 24.9059
Hunter-Lab	63.8174, 10.8379, 6.8834

Details

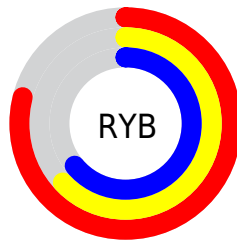
The Android color `4291469732` is a light color, and the websafe version is hex `CC9999`. A complement of this color would be `4288793287`, and the grayscale version is `4289638062`.

A 20% lighter version of the original color is `4294957275`, and `4287851888` is the 20% darker color. If you saturate the color by 10%, you get `4291464593`, and if you desaturate by 10%, it is `4291474871`.

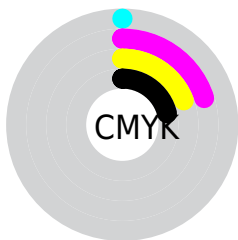
Distribution



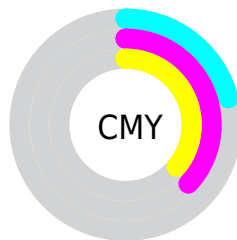
- Red (79%)
- Green (63%)
- Blue (64%)



- Red (79%)
- Yellow (63%)
- Blue (64%)



- Cyan (0%)
- Magenta (20%)
- Yellow (19%)
- Black (21%)



- Cyan (21%)
- Magenta (37%)
- Yellow (36%)

Brightness & Saturation Gradients

These gradients show how the Android color 4291469732 changes by changing the brightness by 10 percent. The first figure shows a shift by +10% for each color and the second figure -10%.

Similar to the brightness gradients but the following saturation gradients show a change of the Android color 4291469732 by changing the saturation by 10% instead.

 4291469732

 4291469732

4294967295

 4289628042

 4294957275


 4287851888

 4294964471

 4286141784


 4284497217

 4282853163

 4281340438

 4280090625

 4278190080

 4291469732

 4291469732

 4291464593

 4291474871

 4291459455

 4291480009

 4291454060

 4291485404

 4291448921

 4291490543

 4291443782

 4291493887

 4291438644

 4291433505

 4291428367

Harmonies

Analogous

The Analogous color harmony consists of three colors that are next to each other on the color wheel.



4291076787



4291469732



4291273623

Triad

The Triadic color harmony groups three colors that are evenly spaced from another and form a triangle on the color wheel.



4291469732



4288590230



4287803335

Complementary

The Complementary color scheme is a pair of colors which are on the opposite of each other on the color wheel.



4291469732



4288793287

Split Complementary

Split-complementary colors differ from the complementary color scheme. The scheme consists of three colors, the original color and two neighbors of the complement color.



4287017663



4291469732



4287607715

Square

The Square scheme is like the rectangle color scheme, but the four colors are evenly spaced on the color wheel.



4291469732



4289703055



4286952626



4288981703

Rectangle

The Rectangle color scheme consists of four colors that form a rectangle on the color wheel.



4291469732



4290946705



4286952626



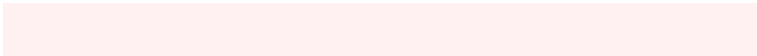
4287475909

Sweetspot

The Sweet Spot groups the original color and five complimentary colors.



4291469732



4294963441



4291273162



4286609271



4278190080



4286611584

Same Dimension

The Same Dimension uses a secret algorithm to generate beautiful new colors.



4291469732



4294951622



4291474081



4284898397



4289069068



4280680451

Inverse Universe

The Inverse Universe completely reimagines the original color for something new.



4291469732



4294951622



4288788938



4284898397



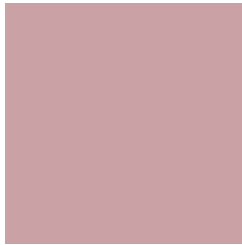
4289069068



4280680451

Previews

White Background



This preview shows how the Android color 4291469732 looks on a white background.

Color Contrast Check

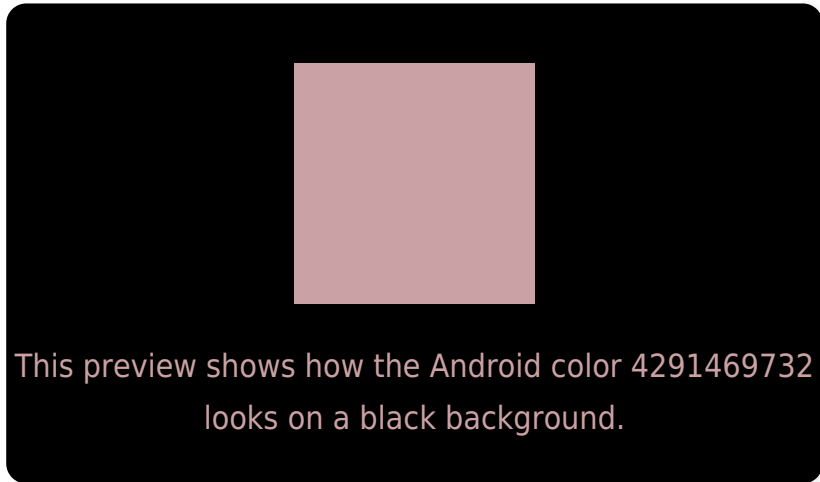
Large Text (above 18pt) WCAG AA × Fail

Any Text WCAG AA × Fail

Large Text (above 18pt) WCAG AAA × Fail

Any Text WCAG AAA × Fail

Black Background



Color Contrast Check

Large Text (above 18pt) WCAG AA ✓ Pass

Any Text WCAG AA ✓ Pass

Large Text (above 18pt) WCAG AAA ✓ Pass

Any Text WCAG AAA ✓ Pass

If you want to check with other color combinations, try the [Color Contrast Checker](#).

Android 4291469732 Background



This preview shows how black text looks on a background with the Android color 4291469732.



This preview shows how white text looks on a background with the Android color 4291469732.

Color Blindness Simulation

Color vision deficiency is a very complex topic, and I could not describe the different causes any better than Wikipedia does, so if you want to learn more, you should check out their [article about color blindness](#).

Dichromacy



Original Color
4291469732

Protanopia
4289702569

Deuteranopia
4290749859

Trichromacy



Original Color
4291469732

Protanomaly
4290357159

Deuteranomaly
4291011747

Tritanomaly
4291535017

Monochromacy



Original Color
4291469732

Achromatopsia
4289638062

Achromatomaly
4290292138

CSS Examples

Text

The CSS property to change the color of the text to Android 4291469732 is called "color". The color property can be set on classes, ids or directly on the HTML element.

This example shows how text in the color `rgb(202, 161, 164)` looks like.

```
.text, #text, p{  
    color:rgb(202, 161, 164)  
}
```

If you want to add a text shadow in that color use the text-shadow property, you can generate a text shadow directly with our [CSS Text Shadow Generator](#).

Here you see how black text with a 4 pixel rgb(202, 161, 164) colored shadow looks like.

```
.shadow{ text-shadow: 4px 4px 2px rgb(202, 161, 164) }
```

Border

The CSS property to change the border of an element to Android 4291469732 is called "border". The border property can be set on classes, ids or directly on the HTML element.

This example shows the color as border, it can be applied via the CSS property "border" or "border-color".

```
.border, #border, table{ border:4px solid rgb(202, 161, 164) }
```

If only the border color should be changed use the property `border-color`.

```
.border{ border-color:rgb(202, 161, 164) }
```

If you want to add a box shadow in that color use:

Here you see how a box with a 4 pixel `rgb(202, 161, 164)` colored shadow looks like.

```
.boxshadow{ -moz-box-shadow:4px 4px 4px  
4px rgb(202, 161, 164); -webkit-box-  
shadow:4px 4px 4px 4px rgb(202, 161, 164);  
box-shadow:4px 4px 4px 4px rgb(202, 161,  
164) }
```

Background

The CSS property to change the background color of an element to Android 4291469732 is called "background". The background property can be set on classes, ids or directly on the HTML element.

```
.background, #background, body{  
background: rgb(202, 161, 164) }
```

If only the background color should be changed can be used:

```
.background{ background-color: rgb(202,  
161, 164) }
```

This example shows the color as background, it is applied via the CSS property "background".

To optimize and compress your CSS code, you can use our [online CSS compressor and optimizer](#) based on csstidy. If you want to create a linear or radial gradient as background or border, check our [CSS Gradient Generator](#).

Hey! You found this booklet interesting? Support Converting Colors with the new Membership Option!

The pro membership hides all ads, plus gives you double the colors in the color bucket, and more awesome pro features!

[Learn more, Memberships starting at \\$2.50/m!](#)

**Follow me
on Twitter!**

@ConvertingColor