

# Converting Colors

Android(4291476416)

Have a look what the booklet for  
Android(4291476416) contains.

<b>Android(4291476416)</b> .....	3
<b><i>Conversions</i></b> .....	4
<b><i>Details</i></b> .....	6
<b><i>Harmonies</i></b> .....	11
<b><i>Previews</i></b> .....	23
<b><i>Color Blindness Simulation</i></b> .....	26
<b><i>CSS Examples</i></b> .....	29

# **Color**

**Android(4291476416)**

# Conversions

## Conversions Part 1

Format	Color
Hex	CABBC0
RGB	202, 187, 192
RGB Percent	79%, 73%, 75%
CMY	0.2078, 0.2667, 0.2471
CMYK	0.00, 0.07, 0.05, 0.21
HSL	340°, 12%, 76%
HSV	340°, 7%, 79%
XYZ	51.6419, 51.9030, 57.1656
YIQ	192.0550, 7.3350, 4.7350

# Conversions

## Conversions Part 2

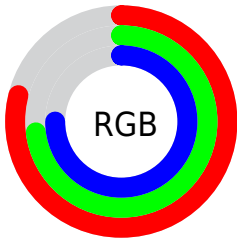
Format	Color
<a href="#">RYB</a>	<a href="#">202, 187, 192</a>
Decimal	<a href="#">13286336</a>
CIELab	<a href="#">77.22, 6.18, -0.62</a>
CIELCh	<a href="#">77, 6.206, 354.305</a>
Yxy	<a href="#">51.9030, 0.3213, 0.3230</a>
Android (android.graphics.Color)	<a href="#">4291476416</a> ( <a href="#">0xFFCABBC0</a> )
YUV	<a href="#">192.0550, -0.0271, 8.7218</a>
Hunter-Lab	<a href="#">72.0437, 1.8746, 3.3849</a>

# Details

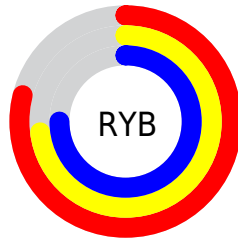
The Android color `4291476416` is a light color, and the websafe version is hex `CCCCCC`. A complement of this color would be `4290497221`, and the grayscale version is `4290822336`.

A 20% lighter version of the original color is `4294964216`, and `4287923851` is the 20% darker color. If you saturate the color by 10%, you get `4291471283`, and if you desaturate by 10%, it is `4291481549`.

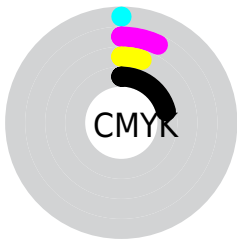
# Distribution



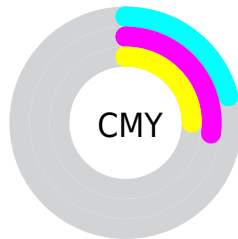
- Red (79%)
- Green (73%)
- Blue (75%)



- Red (79%)
- Yellow (73%)
- Blue (75%)



- Cyan (0%)
- Magenta (7%)
- Yellow (5%)
- Black (21%)



- Cyan (21%)
- Magenta (27%)
- Yellow (25%)

# Brightness & Saturation Gradients

These gradients show how the Android color 4291476416 changes by changing the brightness by 10 percent. The first figure shows a shift by +10% for each color and the second figure -10%.

Similar to the brightness gradients but the following saturation gradients show a change of the Android color 4291476416 by changing the saturation by 10% instead.



■ 4291476416

■ 4291476416

4294967295

■ 4289700005

■ 4294964216

■ 4287923851

■ 4286213489

■ 4284568665

■ 4282989889

■ 4281542443

■ 4280161047

■ 4278190080

■ 4291476416

■ 4291476416

 4291471283

 4291481549

 4291466149

 4291486683

 4291460760

 4291492072

 4291455626

 4291493878

 4291450493

 4291493887

 4291445359

 4291440226

 4291434836

 4291429703

# Harmonies

## Analogous

The Analogous color harmony consists of three colors that are next to each other on the color wheel.



4291148997



4291476416



4291607482

# Triad

The Triadic color harmony groups three colors that are evenly spaced from another and form a triangle on the color wheel.



4291476416



4290691252



4289970632

# Complementary

The Complementary color scheme is a pair of colors which are on the opposite of each other on the color wheel.



4291476416



4290497221

# Split Complementary

Split-complementary colors differ from the complementary color scheme. The scheme consists of three colors, the original color and two neighbors of the complement color.



4289839811



4291476416



4290298296

# Square

The Square scheme is like the rectangle color scheme, but the four colors are evenly spaced on the color wheel.



4291476416



4291149491



4289970877



4290298058

# Rectangle

The Rectangle color scheme consists of four colors that form a rectangle on the color wheel.



4291476416



4291542199



4289970877



4289905350

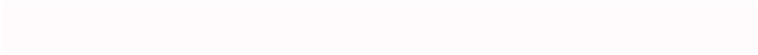


# Sweetspot

The Sweet Spot groups the original color and five complimentary colors.



4291476416



4294966012



4291148746



4286610814



4278190080



4286611584



# Same Dimension

The Same Dimension uses a secret algorithm to generate beautiful new colors.



4291476416



4294961392



4291476923



4284898399



4289069111



4280680461



# Inverse Universe

The Inverse Universe completely reimagines the original color for something new.



4291476416



4294961392



4290496714



4284898399



4289069111

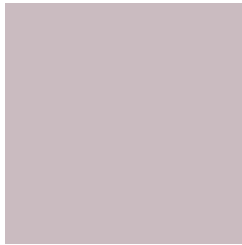


4280680461



# Previews

## White Background



This preview shows how the Android color 4291476416 looks on a white background.

## Color Contrast Check

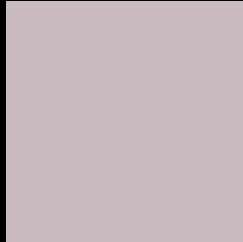
Large Text (above 18pt) WCAG AA × Fail

Any Text WCAG AA × Fail

Large Text (above 18pt) WCAG AAA × Fail

Any Text WCAG AAA × Fail

# Black Background



This preview shows how the Android color 4291476416 looks on a black background.

## Color Contrast Check

Large Text (above 18pt) WCAG AA ✓ Pass

Any Text WCAG AA ✓ Pass

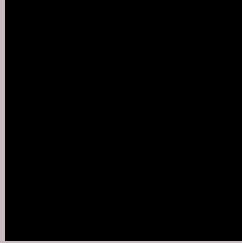
Large Text (above 18pt) WCAG AAA ✓ Pass

Any Text WCAG AAA ✓ Pass

If you want to check with other color combinations, try the [Color Contrast Checker](#).



# Android 4291476416 Background



This preview shows how black text looks on a background with the Android color 4291476416.



This preview shows how white text looks on a background with the Android color 4291476416.

# Color Blindness Simulation

Color vision deficiency is a very complex topic, and I could not describe the different causes any better than Wikipedia does, so if you want to learn more, you should check out their [article about color blindness](#).

## Dichromacy





**Tritanopia**  
4291541704

# Trichromacy



**Original Color**  
4291476416

**Protanomaly**  
4291083713

**Deuteranomaly**  
4291738304

**Tritanomaly**  
4291541701

# Monochromacy



**Original Color**  
4291476416

**Achromatopsia**  
4290822336

**Achromatomaly**  
4291083968

# CSS Examples

## Text

The CSS property to change the color of the text to Android 4291476416 is called "color". The color property can be set on classes, ids or directly on the HTML element.

This example shows how text in the color `rgb(202, 187, 192)` looks like.

```
.text, #text, p{  
    color:rgb(202, 187, 192)  
}
```

If you want to add a text shadow in that color use the text-shadow property, you can generate a text shadow directly with our [CSS Text Shadow Generator](#).

Here you see how black text with a 4 pixel rgb(202, 187, 192) colored shadow looks like.

```
.shadow{ text-shadow: 4px 4px 2px rgb(202, 187, 192) }
```

## Border

The CSS property to change the border of an element to Android 4291476416 is called "border". The border property can be set on classes, ids or directly on the HTML element.

This example shows the color as border, it can be applied via the CSS property "border" or "border-color".

```
.border, #border, table{ border:4px solid rgb(202, 187, 192) }
```

If only the border color should be changed use the property `border-color`.

```
.border{ border-color:rgb(202, 187, 192) }
```

If you want to add a box shadow in that color use:

Here you see how a box with a 4 pixel `rgb(202, 187, 192)` colored shadow looks like.

```
.boxshadow{ -moz-box-shadow:4px 4px 4px  
4px rgb(202, 187, 192); -webkit-box-  
shadow:4px 4px 4px 4px rgb(202, 187, 192);  
box-shadow:4px 4px 4px 4px rgb(202, 187,  
192) }
```

# Background

The CSS property to change the background color of an element to Android 4291476416 is called "background". The background property can be set on classes, ids or directly on the HTML element.

```
.background, #background, body{  
background: rgb(202, 187, 192) }
```

If only the background color should be changed can be used:

```
.background{ background-color: rgb(202,  
187, 192) }
```

This example shows the color as background, it is applied via the CSS property "background".

To optimize and compress your CSS code, you can use our [online CSS compressor and optimizer](#) based on csstidy. If you want to create a linear or radial gradient as background or border, check our [CSS Gradient Generator](#).



Hey! You found this booklet interesting? Support Converting Colors with the new Membership Option!

The pro membership hides all ads, plus gives you double the colors in the color bucket, and more awesome pro features!

**[Learn more, Memberships starting at \\$2.50/m!](#)**

**Follow me  
on Twitter!**

@ConvertingColor