

Converting Colors

Android(4291538332)

Have a look what the booklet for
Android(4291538332) contains.

Android(4291538332)	3
<i>Conversions</i>	4
<i>Details</i>	6
<i>Harmonies</i>	11
<i>Previews</i>	23
<i>Color Blindness Simulation</i>	26
<i>CSS Examples</i>	29

Color

Android(4291538332)

Conversions

Conversions Part 1

Format	Color
Hex	CBAD9C
RGB	203, 173, 156
RGB Percent	80%, 68%, 61%
CMY	0.2039, 0.3216, 0.3882
CMYK	0.00, 0.15, 0.23, 0.20
HSL	22°, 31%, 70%
HSV	22°, 23%, 80%
XYZ	45.5729, 44.9840, 37.7333
YIQ	180.0320, 23.3370, 1.0730

Conversions

Conversions Part 2

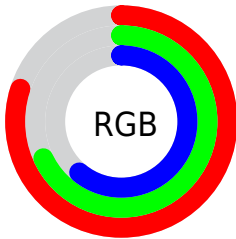
Format	Color
R_{YB}	203, 183, 156
Decimal	13348252
CIE Lab	72.88, 8.24, 12.76
CIE LCh	73, 15.189, 57.166
Yxy	44.9840, 0.3552, 0.3506
Android (android.graphics.Color)	4291538332 (0xFFCBAD9C)
YUV	180.0320, -11.8478, 20.1429
Hunter-Lab	67.0701, 3.9149, 13.5928

Details

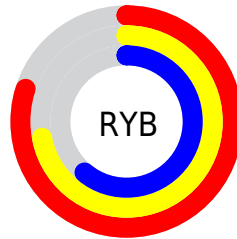
The Android color `4291538332` is a light color, and the websafe version is hex `CC9999`. A complement of this color would be `4288461515`, and the grayscale version is `4290032820`.

A 20% lighter version of the original color is `4294960339`, and `4287920489` is the 20% darker color. If you saturate the color by 10%, you get `4291534984`, and if you desaturate by 10%, it is `4291541680`.

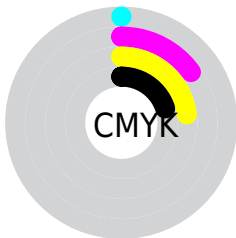
Distribution



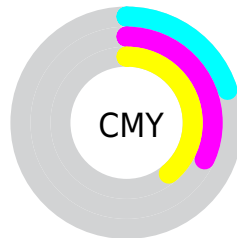
- Red (80%)
- Green (68%)
- Blue (61%)



- Red (80%)
- Yellow (72%)
- Blue (61%)



- Cyan (0%)
- Magenta (15%)
- Yellow (23%)
- Black (20%)



- Cyan (20%)
- Magenta (32%)
- Yellow (39%)

Brightness & Saturation Gradients

These gradients show how the Android color 4291538332 changes by changing the brightness by 10 percent. The first figure shows a shift by +10% for each color and the second figure -10%.

Similar to the brightness gradients but the following saturation gradients show a change of the Android color 4291538332 by changing the saturation by 10% instead.



4291538332



4291538332

4294967295



4289696386



4294960339



4287920489



4294967279



4286210129



4284565562



4282921508



4281408783



4280026112




4278190080




4291538332





4291538332

 4291534984

 4291541680


 4291531635

 4291545029

 4291528287

 4291548377

 4291524939

 4291551725


 4291521591


 4291555071

 4291518242

 4291558399

 4291514894

 4291559423

 4291512576

Harmonies

Analogous

The Analogous color harmony consists of three colors that are next to each other on the color wheel.



4291865255



4291538332



4290752919

Triad

The Triadic color harmony groups three colors that are evenly spaced from another and form a triangle on the color wheel.



4291538332



4287937457



4290031819

Complementary

The Complementary color scheme is a pair of colors which are on the opposite of each other on the color wheel.



4291538332



4288461515

Split Complementary

Split-complementary colors differ from the complementary color scheme. The scheme consists of three colors, the original color and two neighbors of the complement color.



4288853198



4291538332



4287609791

Square

The Square scheme is like the rectangle color scheme, but the four colors are evenly spaced on the color wheel.



4291538332



4288723363



4287936714



4291079362

Rectangle

The Rectangle color scheme consists of four colors that form a rectangle on the color wheel.



4291538332



4290098328



4287936714



4289638861

Sweetspot

The Sweet Spot groups the original color and five complimentary colors.



4291538332



4294964461



4291534011



4286609781



4278190080



4286611584

Same Dimension

The Same Dimension uses a secret algorithm to generate beautiful new colors.



4291538332



4294955448



4291544220



4284899164



4289084416



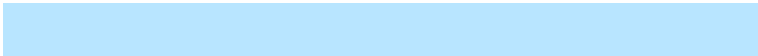
4280684032

Inverse Universe

The Inverse Universe completely reimagines the original color for something new.



4288461515



4290307583



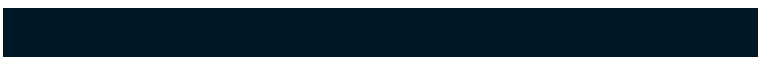
4288455627



4284244582



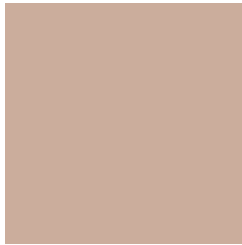
4278217382



4278196262

Previews

White Background



This preview shows how the Android color 4291538332 looks on a white background.

Color Contrast Check

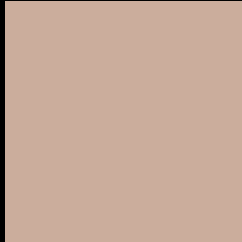
Large Text (above 18pt) WCAG AA × Fail

Any Text WCAG AA × Fail

Large Text (above 18pt) WCAG AAA × Fail

Any Text WCAG AAA × Fail

Black Background



This preview shows how the Android color 4291538332 looks on a black background.

Color Contrast Check

Large Text (above 18pt) WCAG AA ✓ Pass

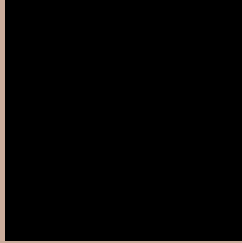
Any Text WCAG AA ✓ Pass

Large Text (above 18pt) WCAG AAA ✓ Pass

Any Text WCAG AAA ✓ Pass

If you want to check with other color combinations, try the [Color Contrast Checker](#).

Android 4291538332 Background



This preview shows how black text looks on a background with the Android color 4291538332.



This preview shows how white text looks on a background with the Android color 4291538332.

Color Blindness Simulation

Color vision deficiency is a very complex topic, and I could not describe the different causes any better than Wikipedia does, so if you want to learn more, you should check out their [article about color blindness](#).


Dichromacy



Original Color
4291538332

Protanopia
4290491039

Deuteranopia
4291669148



Tritanopia
4291733942

Trichromacy



Original Color
4291538332

Protanomaly
4290883742

Deuteranomaly
4291603612

Tritanomaly
4291668653

Monochromacy



Original Color
4291538332

Achromatopsia
4290032820

Achromatomaly
4290556331

CSS Examples

Text

The CSS property to change the color of the text to Android 4291538332 is called "color". The color property can be set on classes, ids or directly on the HTML element.

This example shows how text in the color `rgb(203, 173, 156)` looks like.

```
.text, #text, p{  
    color:rgb(203, 173, 156)  
}
```

If you want to add a text shadow in that color use the text-shadow property, you can generate a text shadow directly with our [CSS Text Shadow Generator](#).

Here you see how black text with a 4 pixel rgb(203, 173, 156) colored shadow looks like.

```
.shadow{ text-shadow: 4px 4px 2px rgb(203, 173, 156) }
```

Border

The CSS property to change the border of an element to Android 4291538332 is called "border". The border property can be set on classes, ids or directly on the HTML element.

This example shows the color as border, it can be applied via the CSS property "border" or "border-color".

```
.border, #border, table{ border:4px solid rgb(203, 173, 156) }
```

If only the border color should be changed use the property `border-color`.

```
.border{ border-color:rgb(203, 173, 156) }
```

If you want to add a box shadow in that color use:

Here you see how a box with a 4 pixel `rgb(203, 173, 156)` colored shadow looks like.

```
.boxshadow{ -moz-box-shadow:4px 4px 4px  
4px rgb(203, 173, 156); -webkit-box-  
shadow:4px 4px 4px 4px rgb(203, 173, 156);  
box-shadow:4px 4px 4px 4px rgb(203, 173,  
156) }
```

Background

The CSS property to change the background color of an element to Android 4291538332 is called "background". The background property can be set on classes, ids or directly on the HTML element.

```
.background, #background, body{  
background: rgb(203, 173, 156) }
```

If only the background color should be changed can be used:

```
.background{ background-color: rgb(203,  
173, 156) }
```

This example shows the color as background, it is applied via the CSS property "background".

To optimize and compress your CSS code, you can use our [online CSS compressor and optimizer](#) based on csstidy. If you want to create a linear or radial gradient as background or border, check our [CSS Gradient Generator](#).

Hey! You found this booklet interesting? Support Converting Colors with the new Membership Option!

The pro membership hides all ads, plus gives you double the colors in the color bucket, and more awesome pro features!

[Learn more, Memberships starting at \\$2.50/m!](#)

**Follow me
on Twitter!**

@ConvertingColor