

# Converting Colors

Android(4291670443)

Have a look what the booklet for  
Android(4291670443) contains.

|  |    |
|--|----|
| <b>Android(4291670443)</b> .....               | 3  |
| <b><i>Conversions</i></b> .....                | 4  |
| <b><i>Details</i></b> .....                    | 6  |
| <b><i>Harmonies</i></b> .....                  | 11 |
| <b><i>Previews</i></b> .....                   | 23 |
| <b><i>Color Blindness Simulation</i></b> ..... | 26 |
| <b><i>CSS Examples</i></b> .....               | 29 |

# **Color**

**Android(4291670443)**

# Conversions

## Conversions Part 1

| Format      | Color                     |
|-------------|---------------------------|
| Hex         | CDB1AB                    |
| RGB         | 205, 177, 171             |
| RGB Percent | 80%, 69%, 67%             |
| CMY         | 0.1961, 0.3059, 0.3294    |
| CMYK        | 0.00, 0.14, 0.17, 0.20    |
| HSL         | 11°, 25%, 74%             |
| HSV         | 11°, 17%, 80%             |
| XYZ         | 48.2497, 47.3637, 45.1272 |
| YIQ         | 184.6880, 18.6140, 4.0700 |

# Conversions

## Conversions Part 2

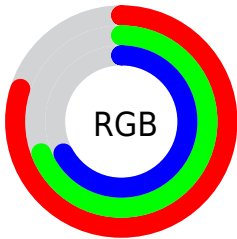
| <b>Format</b>                       | <b>Color</b>                  |
|-------------------------------------|-------------------------------|
| <b>R<sub>Y</sub>B</b>               | 205, 178, 171                 |
| Decimal                             | 13480363                      |
| CIE Lab                             | 74.42, 9.11, 6.78             |
| CIE LCh                             | 74, 11.360, 36.668            |
| Yxy                                 | 47.3637, 0.3428,<br>0.3365    |
| Android<br>(android.graphics.Color) | 4291670443<br>(0xFFCDB1AB)    |
| YUV                                 | 184.6880, -6.7482,<br>17.8136 |
| Hunter-Lab                          | 68.8213, 4.7067,<br>9.2976    |

# Details

The Android color `4291670443` is a light color, and the websafe version is hex `CC9999`. A complement of this color would be `4289447885`, and the grayscale version is `4290361785`.

A 20% lighter version of the original color is `4294961634`, and `4288052343` is the 20% darker color. If you saturate the color by 10%, you get `4291666071`, and if you desaturate by 10%, it is `4291674816`.

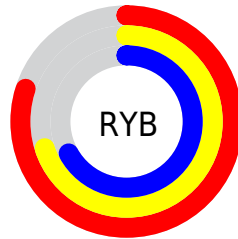
# Distribution



Red (80%)

Green (69%)

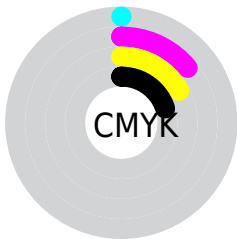
Blue (67%)



Red (80%)

Yellow (70%)

Blue (67%)

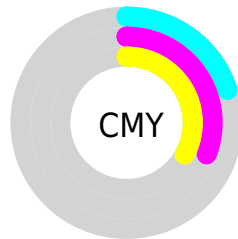


Cyan (0%)

Magenta (14%)

Yellow (17%)

Black (20%)



Cyan (20%)

Magenta (31%)


Yellow (33%)

# Brightness & Saturation Gradients

These gradients show how the Android color 4291670443 changes by changing the brightness by 10 percent. The first figure shows a shift by +10% for each color and the second figure -10%.

Similar to the brightness gradients but the following saturation gradients show a change of the Android color 4291670443 by changing the saturation by 10% instead.



 4291670443

 4291670443

4294967295

 4289828497

 4294961634

 4288052343

 4286341982


 4284697671


 4283118896

 4281605915

 4280289280

 4278190080

 4291670443

 4291670443

 4291666071

 4291674816

 4291661698


 4291679188


 4291657326

 4291683561

 4291652953

 4291687933

 4291648837

 4291690495

 4291644464

 4291640091

 4291635719

 4291634176

# Harmonies

## Analogous

The Analogous color harmony consists of three colors that are next to each other on the color wheel.



4291670197



4291670443



4291277988

# Triad

The Triadic color harmony groups three colors that are evenly spaced from another and form a triangle on the color wheel.



4291670443



4289117614



4289705932

# Complementary

The Complementary color scheme is a pair of colors which are on the opposite of each other on the color wheel.



4291670443



4289447885

# Split Complementary

Split-complementary colors differ from the complementary color scheme. The scheme consists of three colors, the original color and two neighbors of the complement color.



4288920266



4291670443



4288593337

# Square

The Square scheme is like the rectangle color scheme, but the four colors are evenly spaced on the color wheel.



4291670443



4289837734



4288527811



4290557128

# Rectangle

The Rectangle color scheme consists of four colors that form a rectangle on the color wheel.



4291670443



4290885282



4288527811



4289444044



# Sweetspot

The Sweet Spot groups the original color and five complimentary colors.



4291670443



4294964722



4291668935



4286609784



4278190080



4286611584

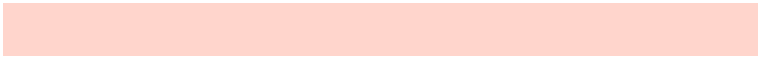


# Same Dimension

The Same Dimension uses a secret algorithm to generate beautiful new colors.



4291670443



4294956492



4291674795



4284898908



4289076480



4280682240

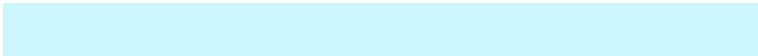


# Inverse Universe

The Inverse Universe completely reimagines the original color for something new.



4289447885



4291622655



4289443533



4284245094



4278225062

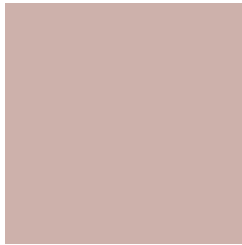


4278198054



# Previews

## White Background



This preview shows how the Android color 4291670443 looks on a white background.

## Color Contrast Check

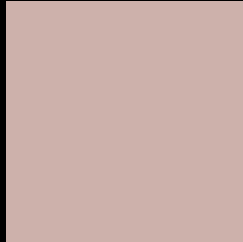
Large Text (above 18pt) WCAG AA × Fail

Any Text WCAG AA × Fail

Large Text (above 18pt) WCAG AAA × Fail

Any Text WCAG AAA × Fail

# Black Background



This preview shows how the Android color 4291670443 looks on a black background.

## Color Contrast Check

Large Text (above 18pt) WCAG AA ✓ Pass

Any Text WCAG AA ✓ Pass

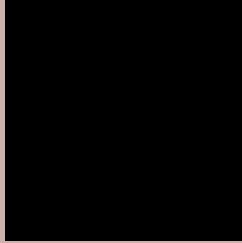
Large Text (above 18pt) WCAG AAA ✓ Pass

Any Text WCAG AAA ✓ Pass

If you want to check with other color combinations, try the [Color Contrast Checker](#).



# Android 4291670443 Background



This preview shows how black text looks on a background with the Android color 4291670443.




This preview shows how white text looks on a background with the Android color 4291670443.

# Color Blindness Simulation

Color vision deficiency is a very complex topic, and I could not describe the different causes any better than Wikipedia does, so if you want to learn more, you should check out their [article about color blindness](#).

## Dichromacy





**Tritanopia**  
4291800764

# Trichromacy



**Original Color**  
4291670443

**Protanomaly**  
4291015853

**Deuteranomaly**  
4291670443

**Tritanomaly**  
4291735478

# Monochromacy



**Original Color**  
4291670443

**Achromatopsia**  
4290361785

**Achromatomaly**  
4290819764

# CSS Examples

## Text

The CSS property to change the color of the text to Android 4291670443 is called "color". The color property can be set on classes, ids or directly on the HTML element.

This example shows how text in the color `rgb(205, 177, 171)` looks like.

```
.text, #text, p{  
    color:rgb(205, 177, 171)  
}
```

If you want to add a text shadow in that color use the text-shadow property, you can generate a text shadow directly with our [CSS Text Shadow Generator](#).

Here you see how black text with a 4 pixel rgb(205, 177, 171) colored shadow looks like.

```
.shadow{ text-shadow: 4px 4px 2px rgb(205, 177, 171) }
```

## Border

The CSS property to change the border of an element to Android 4291670443 is called "border". The border property can be set on classes, ids or directly on the HTML element.

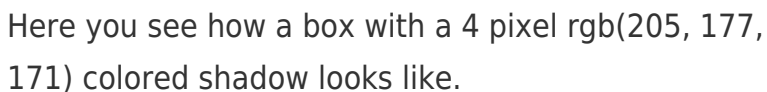
This example shows the color as border, it can be applied via the CSS property "border" or "border-color".

```
.border, #border, table{ border:4px solid rgb(205, 177, 171) }
```

If only the border color should be changed use the property `border-color`.

```
.border{ border-color:rgb(205, 177, 171) }
```

If you want to add a box shadow in that color use:



Here you see how a box with a 4 pixel `rgb(205, 177, 171)` colored shadow looks like.

```
.boxshadow{ -moz-box-shadow:4px 4px 4px  
4px rgb(205, 177, 171); -webkit-box-  
shadow:4px 4px 4px 4px rgb(205, 177, 171);  
box-shadow:4px 4px 4px 4px rgb(205, 177,  
171) }
```

# Background

The CSS property to change the background color of an element to Android 4291670443 is called "background". The background property can be set on classes, ids or directly on the HTML element.

```
.background, #background, body{  
background: rgb(205, 177, 171) }
```

If only the background color should be changed can be used:

```
.background{ background-color: rgb(205,  
177, 171) }
```

This example shows the color as background, it is applied via the CSS property "background".

To optimize and compress your CSS code, you can use our [online CSS compressor and optimizer](#) based on csstidy. If you want to create a linear or radial gradient as background or border, check our [CSS Gradient Generator](#).



Hey! You found this booklet interesting? Support Converting Colors with the new Membership Option!

The pro membership hides all ads, plus gives you double the colors in the color bucket, and more awesome pro features!

**[Learn more, Memberships starting at \\$2.50/m!](#)**

**Follow me  
on Twitter!**

@ConvertingColor