

Converting Colors

Android(4291730845)

Have a look what the booklet for
Android(4291730845) contains.

Android(4291730845)	3
<i>Conversions</i>	4
<i>Details</i>	6
<i>Harmonies</i>	11
<i>Previews</i>	23
<i>Color Blindness Simulation</i>	26
<i>CSS Examples</i>	29

Color

Android(4291730845)

Conversions

Conversions Part 1

Format	Color
Hex	CE9D9D
RGB	206, 157, 157
RGB Percent	81%, 62%, 62%
CMY	0.1922, 0.3843, 0.3843
CMYK	0.00, 0.24, 0.24, 0.19
HSL	0°, 33%, 71%
HSV	0°, 24%, 81%
XYZ	43.5964, 39.6701, 37.2576
YIQ	171.6510, 29.2040, 10.3880

Conversions

Conversions Part 2

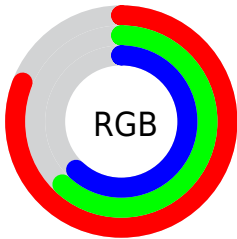
Format	Color
R _Y B	206, 157, 157
Decimal	13540765
CIE Lab	69.23, 18.22, 7.07
CIE LCh	69, 19.538, 21.203
Yxy	39.6701, 0.3617, 0.3291
Android (android.graphics.Color)	4291730845 (0xFFCE9D9D)
YUV	171.6510, -7.2229, 30.1241
Hunter-Lab	62.9842, 13.3318, 9.0166

Details

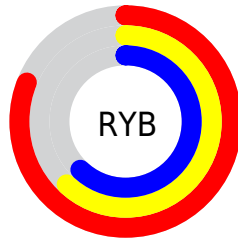
The Android color `4291730845` is a light color, and the websafe version is hex `CC9999`. A complement of this color would be `4288532174`, and the grayscale version is `4289506476`.

A 20% lighter version of the original color is `4294956244`, and `4288113002` is the 20% darker color. If you saturate the color by 10%, you get `4291725448`, and if you desaturate by 10%, it is `4291736242`.

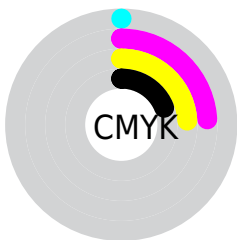
Distribution



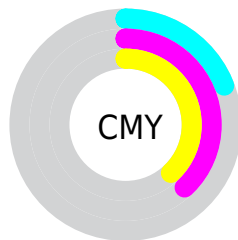
- Red (81%)
- Green (62%)
- Blue (62%)



- Red (81%)
- Yellow (62%)
- Blue (62%)



- Cyan (0%)
- Magenta (24%)
- Yellow (24%)
- Black (19%)



- Cyan (19%)
- Magenta (38%)
- Yellow (38%)

Brightness & Saturation Gradients

These gradients show how the Android color 4291730845 changes by changing the brightness by 10 percent. The first figure shows a shift by +10% for each color and the second figure -10%.

Similar to the brightness gradients but the following saturation gradients show a change of the Android color 4291730845 by changing the saturation by 10% instead.



4291730845



4291730845

4294967295



4289889155



4294956244



4288113002



4294963440



4286337362



4284627515



4283048741



4281470480



4280025089




4278190080



4291730845



4291730845

 4291725448

 4291736242


 4291720308


 4291741382

 4291714911

 4291746779

 4291709771

 4291751919

 4291704374

 4291756031

 4291698977

 4291693837

 4291690496

Harmonies

Analogous

The Analogous color harmony consists of three colors that are next to each other on the color wheel.



4291403183



4291730845



4291404174

Triad

The Triadic color harmony groups three colors that are evenly spaced from another and form a triangle on the color wheel.



4291730845



4288000146



4287540428

Complementary

The Complementary color scheme is a pair of colors which are on the opposite of each other on the color wheel.



4291730845



4288532174

Split Complementary

Split-complementary colors differ from the complementary color scheme. The scheme consists of three colors, the original color and two neighbors of the complement color.



4286427588



4291730845



4286821283

Square

The Square scheme is like the rectangle color scheme, but the four colors are evenly spaced on the color wheel.



4291730845



4289309832



4286165941



4289046218

Rectangle

The Rectangle color scheme consists of four colors that form a rectangle on the color wheel.



4291730845



4290880648



4286165941



4287082186

Sweetspot

The Sweet Spot groups the original color and five complimentary colors.



4291730845



4294962669



4291730894



4286608757



4278190080



4286611584

Same Dimension

The Same Dimension uses a secret algorithm to generate beautiful new colors.



4291730845



4294948277



4291736989



4284898396



4289069056



4280680448

Inverse Universe

The Inverse Universe completely reimagines the original color for something new.



4288532174



4290117631



4288525774



4284245606



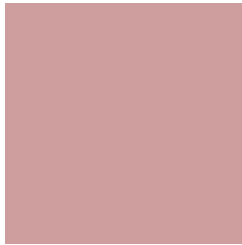
4278232742



4278199846

Previews

White Background



This preview shows how the Android color 4291730845 looks on a white background.

Color Contrast Check

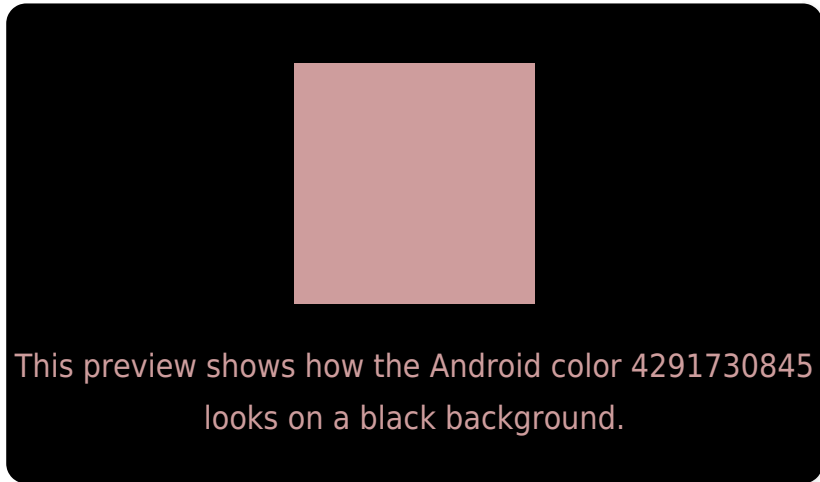
Large Text (above 18pt) WCAG AA × Fail

Any Text WCAG AA × Fail

Large Text (above 18pt) WCAG AAA × Fail

Any Text WCAG AAA × Fail

Black Background



Color Contrast Check

Large Text (above 18pt) WCAG AA ✓ Pass

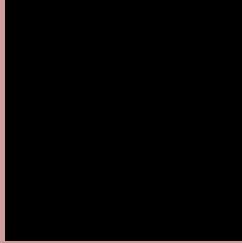
Any Text WCAG AA ✓ Pass

Large Text (above 18pt) WCAG AAA ✓ Pass

Any Text WCAG AAA ✓ Pass

If you want to check with other color combinations, try the [Color Contrast Checker](#).

Android 4291730845 Background



This preview shows how black text looks on a background with the Android color 4291730845.



This preview shows how white text looks on a background with the Android color 4291730845.

Color Blindness Simulation

Color vision deficiency is a very complex topic, and I could not describe the different causes any better than Wikipedia does, so if you want to learn more, you should check out their [article about color blindness](#).

Dichromacy



Original Color
4291730845

Protanopia
4289636771

Deuteranopia
4290749340



Tritanopia
4291795879

Trichromacy



Original Color
4291730845

Protanomaly
4290422177

Deuteranomaly
4291076508

Tritanomaly
4291796131

Monochromacy



Original Color
4291730845

Achromatopsia
4289506476

Achromatomaly
4290291623

CSS Examples

Text

The CSS property to change the color of the text to Android 4291730845 is called "color". The color property can be set on classes, ids or directly on the HTML element.

This example shows how text in the color `rgb(206, 157, 157)` looks like.

```
.text, #text, p{  
    color:rgb(206, 157, 157)  
}
```

If you want to add a text shadow in that color use the text-shadow property, you can generate a text shadow directly with our [CSS Text Shadow Generator](#).

Here you see how black text with a 4 pixel rgb(206, 157, 157) colored shadow looks like.

```
.shadow{ text-shadow: 4px 4px 2px rgb(206, 157, 157) }
```

Border

The CSS property to change the border of an element to Android 4291730845 is called "border". The border property can be set on classes, ids or directly on the HTML element.

This example shows the color as border, it can be applied via the CSS property "border" or "border-color".

```
.border, #border, table{ border:4px solid rgb(206, 157, 157) }
```

If only the border color should be changed use the property `border-color`.

```
.border{ border-color:rgb(206, 157, 157) }
```

If you want to add a box shadow in that color use:

Here you see how a box with a 4 pixel `rgb(206, 157, 157)` colored shadow looks like.

```
.boxshadow{ -moz-box-shadow:4px 4px 4px  
4px rgb(206, 157, 157); -webkit-box-  
shadow:4px 4px 4px 4px rgb(206, 157, 157);  
box-shadow:4px 4px 4px 4px rgb(206, 157,  
157) }
```

Background

The CSS property to change the background color of an element to Android 4291730845 is called "background". The background property can be set on classes, ids or directly on the HTML element.

```
.background, #background, body{  
background: rgb(206, 157, 157) }
```

If only the background color should be changed can be used:

```
.background{ background-color: rgb(206,  
157, 157) }
```

This example shows the color as background, it is applied via the CSS property "background".

To optimize and compress your CSS code, you can use our [online CSS compressor and optimizer](#) based on csstidy. If you want to create a linear or radial gradient as background or border, check our [CSS Gradient Generator](#).

Hey! You found this booklet interesting? Support Converting Colors with the new Membership Option!

The pro membership hides all ads, plus gives you double the colors in the color bucket, and more awesome pro features!

[Learn more, Memberships starting at \\$2.50/m!](#)

**Follow me
on Twitter!**

@ConvertingColor