

Converting Colors

Android(4291736760)

Have a look what the booklet for
Android(4291736760) contains.

Android(4291736760)	3
<i>Conversions</i>	4
<i>Details</i>	6
<i>Harmonies</i>	11
<i>Previews</i>	23
<i>Color Blindness Simulation</i>	26
<i>CSS Examples</i>	29

Color

Android(4291736760)

Conversions

Conversions Part 1

Format	Color
Hex	CEB4B8
RGB	206, 180, 184
RGB Percent	81%, 71%, 72%
CMY	0.1922, 0.2941, 0.2784
CMYK	0.00, 0.13, 0.11, 0.19
HSL	351°, 21%, 76%
HSV	351°, 13%, 81%
XYZ	50.4266, 49.2250, 52.1910
YIQ	188.2300, 14.2120, 6.7560

Conversions

Conversions Part 2

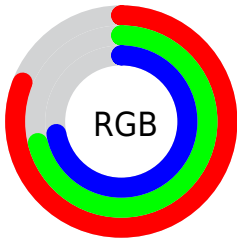
Format	Color
R _Y B	206, 180, 184
Decimal	13546680
CIE Lab	75.59, 9.98, 1.39
CIE LCh	76, 10.080, 7.948
Yxy	49.2250, 0.3321, 0.3242
Android (android.graphics.Color)	4291736760 (0xFFCEB4B8)
YUV	188.2300, -2.0854, 15.5843
Hunter-Lab	70.1605, 5.5126, 5.0077

Details

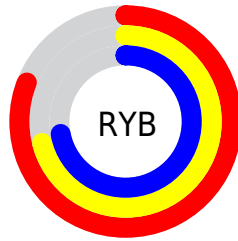
The Android color `4291736760` is a light color, and the websafe version is hex `CCCCCC`. A complement of this color would be `4290039498`, and the grayscale version is `4290559164`.

A 20% lighter version of the original color is `4294962416`, and `4288184195` is the 20% darker color. If you saturate the color by 10%, you get `4291731367`, and if you desaturate by 10%, it is `4291742153`.

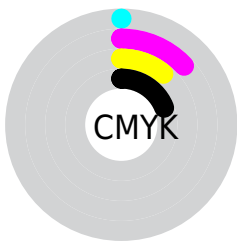
Distribution



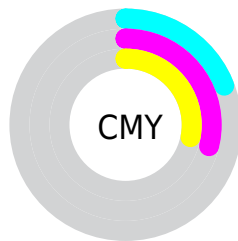
- Red (81%)
- Green (71%)
- Blue (72%)



- Red (81%)
- Yellow (71%)
- Blue (72%)



- Cyan (0%)
- Magenta (13%)
- Yellow (11%)
- Black (19%)





- Cyan (19%)
- Magenta (29%)
- Yellow (28%)

Brightness & Saturation Gradients

These gradients show how the Android color 4291736760 changes by changing the brightness by 10 percent. The first figure shows a shift by +10% for each color and the second figure -10%.

Similar to the brightness gradients but the following saturation gradients show a change of the Android color 4291736760 by changing the saturation by 10% instead.

 4291736760

 4291736760

4294967295

 4289894813

 4294962416

 4288184195

 4286408298


 4284763730

 4283184955


 4281672229


 4280290320


 4278190080

 4291736760

 4291736760

 4291731367


 4291742153


 4291726229

 4291747291

 4291720836


 4291752684

 4291715698

 4291756030

 4291710305

 4291756031

 4291704911

 4291699774

 4291694381

 4291690528

Harmonies

Analogous

The Analogous color harmony consists of three colors that are next to each other on the color wheel.



4291409345



4291736760



4291737007

Triad

The Triadic color harmony groups three colors that are evenly spaced from another and form a triangle on the color wheel.



4291736760



4290100651



4289314251

Complementary

The Complementary color scheme is a pair of colors which are on the opposite of each other on the color wheel.



4291736760



4290039498

Split Complementary

Split-complementary colors differ from the complementary color scheme. The scheme consists of three colors, the original color and two neighbors of the complement color.



4288987077



4291736760



4289445811

Square

The Square scheme is like the rectangle color scheme, but the four colors are evenly spaced on the color wheel.



4291736760



4290755240



4288987324



4290034380

Rectangle

The Rectangle color scheme consists of four colors that form a rectangle on the color wheel.



4291736760



4291540651



4288987324



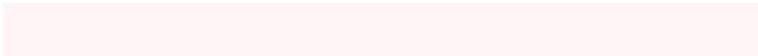
4289183434

Sweetspot

The Sweet Spot groups the original color and five complimentary colors.



4291736760



4294964726



4291474638



4286609786



4278190080



4286611584

Same Dimension

The Same Dimension uses a secret algorithm to generate beautiful new colors.



4291736760



4294957535



4291739060



4284898397



4289069082



4280680454

Inverse Universe

The Inverse Universe completely reimagines the original color for something new.



4291736760



4294957535



4290037198



4284898397



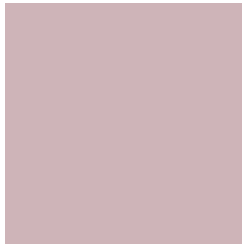
4289069082



4280680454

Previews

White Background



This preview shows how the Android color 4291736760 looks on a white background.

Color Contrast Check

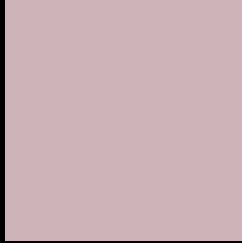
Large Text (above 18pt) WCAG AA × Fail

Any Text WCAG AA × Fail

Large Text (above 18pt) WCAG AAA × Fail

Any Text WCAG AAA × Fail

Black Background



This preview shows how the Android color 4291736760 looks on a black background.

Color Contrast Check

Large Text (above 18pt) WCAG AA ✓ Pass

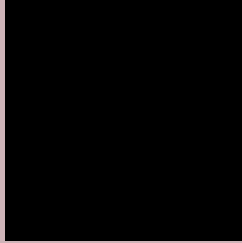
Any Text WCAG AA ✓ Pass

Large Text (above 18pt) WCAG AAA ✓ Pass

Any Text WCAG AAA ✓ Pass

If you want to check with other color combinations, try the [Color Contrast Checker](#).

Android 4291736760 Background



This preview shows how black text looks on a background with the Android color 4291736760.



This preview shows how white text looks on a background with the Android color 4291736760.

Color Blindness Simulation

Color vision deficiency is a very complex topic, and I could not describe the different causes any better than Wikipedia does, so if you want to learn more, you should check out their [article about color blindness](#).


Dichromacy



Original Color
4291736760

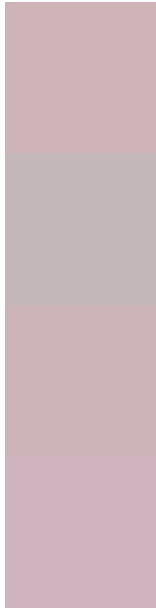
Protanopia
4290623931

Deuteranopia
4291671224



Tritanopia
4291802049

Trichromacy



Original Color
4291736760

Protanomaly
4291016634

Deuteranomaly
4291671224

Tritanomaly
4291802046

Monochromacy



Original Color
4291736760

Achromatopsia
4290559164

Achromatomaly
4291017147

CSS Examples

Text

The CSS property to change the color of the text to Android 4291736760 is called "color". The color property can be set on classes, ids or directly on the HTML element.

This example shows how text in the color `rgb(206, 180, 184)` looks like.

```
.text, #text, p{  
    color:rgb(206, 180, 184)  
}
```

If you want to add a text shadow in that color use the text-shadow property, you can generate a text shadow directly with our [CSS Text Shadow Generator](#).

Here you see how black text with a 4 pixel rgb(206, 180, 184) colored shadow looks like.

```
.shadow{ text-shadow: 4px 4px 2px rgb(206, 180, 184) }
```

Border

The CSS property to change the border of an element to Android 4291736760 is called "border". The border property can be set on classes, ids or directly on the HTML element.

This example shows the color as border, it can be applied via the CSS property "border" or "border-color".

```
.border, #border, table{ border:4px solid rgb(206, 180, 184) }
```

If only the border color should be changed use the property `border-color`.

```
.border{ border-color:rgb(206, 180, 184) }
```

If you want to add a box shadow in that color use:

Here you see how a box with a 4 pixel `rgb(206, 180, 184)` colored shadow looks like.

```
.boxshadow{ -moz-box-shadow:4px 4px 4px  
4px rgb(206, 180, 184); -webkit-box-  
shadow:4px 4px 4px 4px rgb(206, 180, 184);  
box-shadow:4px 4px 4px 4px rgb(206, 180,  
184) }
```

Background

The CSS property to change the background color of an element to Android 4291736760 is called "background". The background property can be set on classes, ids or directly on the HTML element.

```
.background, #background, body{  
background: rgb(206, 180, 184) }
```

If only the background color should be changed can be used:

```
.background{ background-color: rgb(206,  
180, 184) }
```

This example shows the color as background, it is applied via the CSS property "background".

To optimize and compress your CSS code, you can use our [online CSS compressor and optimizer](#) based on csstidy. If you want to create a linear or radial gradient as background or border, check our [CSS Gradient Generator](#).

Hey! You found this booklet interesting? Support Converting Colors with the new Membership Option!

The pro membership hides all ads, plus gives you double the colors in the color bucket, and more awesome pro features!

[Learn more, Memberships starting at \\$2.50/m!](#)

**Follow me
on Twitter!**

@ConvertingColor