

Converting Colors

Android(4291799978)

Have a look what the booklet for
Android(4291799978) contains.

Android(4291799978)	3
<i>Conversions</i>	4
<i>Details</i>	6
<i>Harmonies</i>	11
<i>Previews</i>	23
<i>Color Blindness Simulation</i>	26
<i>CSS Examples</i>	29

Color

Android(4291799978)

Conversions

Conversions Part 1

Format	Color
Hex	CFABAA
RGB	207, 171, 170
RGB Percent	81%, 67%, 67%
CMY	0.1882, 0.3294, 0.3333
CMYK	0.00, 0.17, 0.18, 0.19
HSL	2°, 28%, 74%
HSV	2°, 18%, 81%
XYZ	47.5507, 45.2935, 44.2665
YIQ	181.6500, 21.7770, 7.3210

Conversions

Conversions Part 2

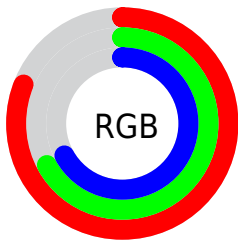
Format	Color
R_{YB}	207, 171, 170
Decimal	13609898
CIE _{Lab}	73.08, 12.94, 5.43
CIE _{LCh}	73, 14.034, 22.775
Yxy	45.2935, 0.3468, 0.3303
Android (android.graphics.Color)	4291799978 (0xFFCFABAA)
YUV	181.6500, -5.7434, 22.2320
Hunter-Lab	67.3004, 8.3424, 8.1126

Details

The Android color `4291799978` is a light color, and the websafe version is hex `CC9999`. A complement of this color would be `4289384143`, and the grayscale version is `4290164406`.

A 20% lighter version of the original color is `4294959841`, and `4288182134` is the 20% darker color. If you saturate the color by 10%, you get `4291794837`, and if you desaturate by 10%, it is `4291805119`.

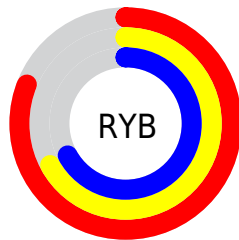
Distribution



Red (81%)

Green (67%)

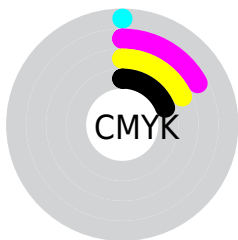
Blue (67%)



Red (81%)

Yellow (67%)

Blue (67%)

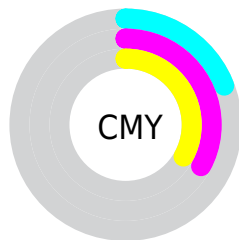


Cyan (0%)

Magenta (17%)

Yellow (18%)

Black (19%)



Cyan (19%)

Magenta (33%)

Yellow (33%)

Brightness & Saturation Gradients

These gradients show how the Android color 4291799978 changes by changing the brightness by 10 percent. The first figure shows a shift by +10% for each color and the second figure -10%.

Similar to the brightness gradients but the following saturation gradients show a change of the Android color 4291799978 by changing the saturation by 10% instead.



4291799978



4291799978

4294967295



4289958032



4294959841



4288182134

4294967294



4286471773



4284761670



4283183151



4281604635



4280353024




4278190080



4291799978



4291799978

 4291794837


 4291805119

 4291789697

 4291810259

 4291784556


 4291815400

 4291779159


 4291820797


 4291774018

 4291821567

 4291768878

 4291763737

 4291758596

 4291757568

Harmonies

Analogous

The Analogous color harmony consists of three colors that are next to each other on the color wheel.



4291603383



4291799978



4291538335

Triad

The Triadic color harmony groups three colors that are evenly spaced from another and form a triangle on the color wheel.



4291799978



4288985508



4288853453

Complementary

The Complementary color scheme is a pair of colors which are on the opposite of each other on the color wheel.



4291799978



4289384143

Split Complementary

Split-complementary colors differ from the complementary color scheme. The scheme consists of three colors, the original color and two neighbors of the complement color.



4288068039



4291799978



4288199600

Square

The Square scheme is like the rectangle color scheme, but the four colors are evenly spaced on the color wheel.



4291799978



4289967772



4287806397



4289901003

Rectangle

The Rectangle color scheme consists of four colors that form a rectangle on the color wheel.



4291799978



4291145883



4287806397



4288526284

Sweetspot

The Sweet Spot groups the original color and five complimentary colors.



4291799978



4294964210



4291799758



4286609528



4278190080



4286611584

Same Dimension

The Same Dimension uses a secret algorithm to generate beautiful new colors.



4291799978



4294953929



4291804586



4285095518



4289201408



4280877312

Inverse Universe

The Inverse Universe completely reimagines the original color for something new.



4289384143



4291428095



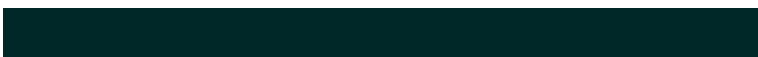
4289379535



4284377193



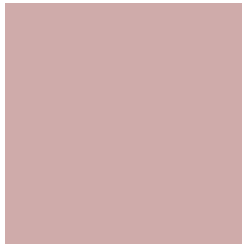
4278232232



4278200361

Previews

White Background



This preview shows how the Android color 4291799978 looks on a white background.

Color Contrast Check

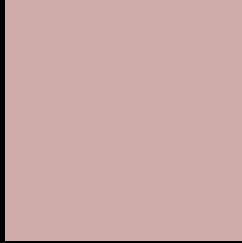
Large Text (above 18pt) WCAG AA × Fail

Any Text WCAG AA × Fail

Large Text (above 18pt) WCAG AAA × Fail

Any Text WCAG AAA × Fail

Black Background



This preview shows how the Android color 4291799978 looks on a black background.

Color Contrast Check

Large Text (above 18pt) WCAG AA ✓ Pass

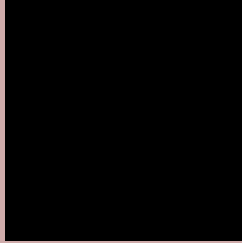
Any Text WCAG AA ✓ Pass

Large Text (above 18pt) WCAG AAA ✓ Pass

Any Text WCAG AAA ✓ Pass

If you want to check with other color combinations, try the [Color Contrast Checker](#).

Android 4291799978 Background



This preview shows how black text looks on a background with the Android color 4291799978.




This preview shows how white text looks on a background with the Android color 4291799978.

Color Blindness Simulation

Color vision deficiency is a very complex topic, and I could not describe the different causes any better than Wikipedia does, so if you want to learn more, you should check out their [article about color blindness](#).

Dichromacy





Tritanopia
4291930550

Trichromacy



Original Color
4291799978

Protanomaly
4290818221

Deuteranomaly
4291538090

Tritanomaly
4291865266

Monochromacy



Original Color
4291799978

Achromatopsia
4290164406

Achromatomaly
4290753202

CSS Examples

Text

The CSS property to change the color of the text to Android 4291799978 is called "color". The color property can be set on classes, ids or directly on the HTML element.

This example shows how text in the color `rgb(207, 171, 170)` looks like.

```
.text, #text, p{  
    color:rgb(207, 171, 170)  
}
```

If you want to add a text shadow in that color use the text-shadow property, you can generate a text shadow directly with our [CSS Text Shadow Generator](#).

Here you see how black text with a 4 pixel rgb(207, 171, 170) colored shadow looks like.

```
.shadow{ text-shadow: 4px 4px 2px rgb(207, 171, 170) }
```

Border

The CSS property to change the border of an element to Android 4291799978 is called "border". The border property can be set on classes, ids or directly on the HTML element.

This example shows the color as border, it can be applied via the CSS property "border" or "border-color".

```
.border, #border, table{ border:4px solid rgb(207, 171, 170) }
```

If only the border color should be changed use the property `border-color`.

```
.border{ border-color:rgb(207, 171, 170) }
```

If you want to add a box shadow in that color use:

Here you see how a box with a 4 pixel `rgb(207, 171, 170)` colored shadow looks like.

```
.boxshadow{ -moz-box-shadow:4px 4px 4px  
4px rgb(207, 171, 170); -webkit-box-  
shadow:4px 4px 4px 4px rgb(207, 171, 170);  
box-shadow:4px 4px 4px 4px rgb(207, 171,  
170) }
```

Background

The CSS property to change the background color of an element to Android 4291799978 is called "background". The background property can be set on classes, ids or directly on the HTML element.

```
.background, #background, body{  
background: rgb(207, 171, 170) }
```

If only the background color should be changed can be used:

```
.background{ background-color: rgb(207,  
171, 170) }
```

This example shows the color as background, it is applied via the CSS property "background".

To optimize and compress your CSS code, you can use our [online CSS compressor and optimizer](#) based on csstidy. If you want to create a linear or radial gradient as background or border, check our [CSS Gradient Generator](#).

Hey! You found this booklet interesting? Support Converting Colors with the new Membership Option!

The pro membership hides all ads, plus gives you double the colors in the color bucket, and more awesome pro features!

[Learn more, Memberships starting at \\$2.50/m!](#)

**Follow me
on Twitter!**

@ConvertingColor