

# Converting Colors

Android(4291861638)

Have a look what the booklet for  
Android(4291861638) contains.

<b>Android(4291861638)</b> .....	3
<b><i>Conversions</i></b> .....	4
<b><i>Details</i></b> .....	6
<b><i>Harmonies</i></b> .....	11
<b><i>Previews</i></b> .....	23
<b><i>Color Blindness Simulation</i></b> .....	26
<b><i>CSS Examples</i></b> .....	29

# **Color**

**Android(4291861638)**

# Conversions

## Conversions Part 1

Format	Color
Hex	D09C86
RGB	208, 156, 134
RGB Percent	82%, 61%, 53%
CMY	0.1843, 0.3882, 0.4745
CMYK	0.00, 0.25, 0.36, 0.18
HSL	18°, 44%, 67%
HSV	18°, 36%, 82%
XYZ	42.2040, 38.9081, 27.8399
YIQ	169.0400, 38.0540, 4.1820

# Conversions

## Conversions Part 2

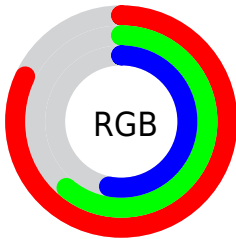
Format	Color
RYB	208, 165, 134
Decimal	13671558
CIELab	68.68, 16.43, 19.07
CIElCh	69, 25.172, 49.244
Yxy	38.9081, 0.3874, 0.3571
Android (android.graphics.Color)	4291861638 (0xFFD09C86)
YUV	169.0400, -17.2747, 34.1679
Hunter-Lab	62.3763, 11.6149, 17.2010

# Details

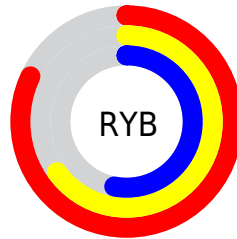
The Android color `4291861638` is a light color, and the websafe version is hex `CC9999`. A complement of this color would be `4287019728`, and the grayscale version is `4289309097`.

A 20% lighter version of the original color is `4294955963`, and `4288178516` is the 20% darker color. If you saturate the color by 10%, you get `4291857777`, and if you desaturate by 10%, it is `4291865499`.

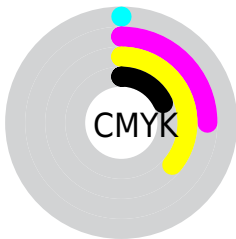
# Distribution



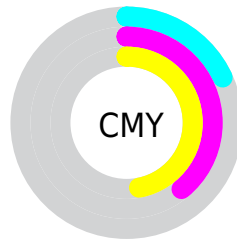
- Red (82%)
- Green (61%)
- Blue (53%)



- Red (82%)
- Yellow (65%)
- Blue (53%)



- Cyan (0%)
- Magenta (25%)
- Yellow (36%)
- Black (18%)




- Cyan (18%)
- Magenta (39%)
- Yellow (47%)

# Brightness & Saturation Gradients

These gradients show how the Android color 4291861638 changes by changing the brightness by 10 percent. The first figure shows a shift by +10% for each color and the second figure -10%.

Similar to the brightness gradients but the following saturation gradients show a change of the Android color 4291861638 by changing the saturation by 10% instead.



 4291861638

 4291861638

4294967295

 4290019949

 4294955963

 4288178516

 4294963159

 4286402621

 4294967283

 4284692775

 4282983186

 4281404928

 4279697408

 4278190080

 4291861638

 4291861638

 4291857777

 4291865499

 4291854172

 4291869104

 4291850312

 4291872964

 4291846707

 4291876569

 4291842846

 4291880430

 4291838985

 4291884287

 4291837440

 4291887103

# Harmonies

## Analogous

The Analogous color harmony consists of three colors that are next to each other on the color wheel.



4292253594



4291861638



4290814843

# Triad

The Triadic color harmony groups three colors that are evenly spaced from another and form a triangle on the color wheel.



4291861638



4285969566



4288718290

# Complementary

The Complementary color scheme is a pair of colors which are on the opposite of each other on the color wheel.



4291861638



4287019728

# Split Complementary

Split-complementary colors differ from the complementary color scheme. The scheme consists of three colors, the original color and two neighbors of the complement color.



4286622932



4291861638



4284921014

# Square

The Square scheme is like the rectangle color scheme, but the four colors are evenly spaced on the color wheel.



4291861638



4287607177



4285117129



4290616773

# Rectangle

The Rectangle color scheme consists of four colors that form a rectangle on the color wheel.



4291861638



4289833083



4285117129



4287997908

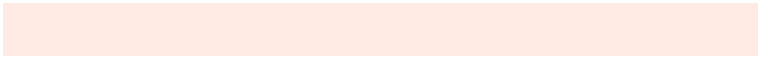


# Sweetspot

The Sweet Spot groups the original color and five complimentary colors.



4291861638



4294962147



4291856059



4286608495



4278190080



4286611584



# Same Dimension

The Same Dimension uses a secret algorithm to generate beautiful new colors.



4291861638



4294947473



4291870854



4285096286



4289212928



4280880128

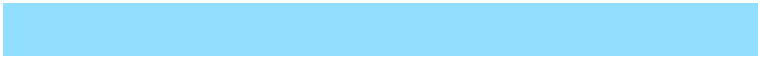


# Inverse Universe

The Inverse Universe completely reimagines the original color for something new.



4287019728



4287749887



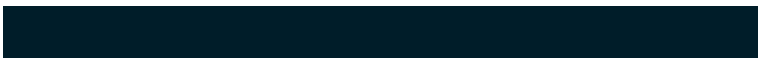
4287010512



4284376425



4278220456



4278197545



# Previews

## White Background



This preview shows how the Android color 4291861638 looks on a white background.

## Color Contrast Check

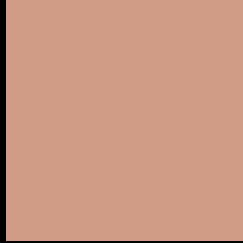
Large Text (above 18pt) WCAG AA × Fail

Any Text WCAG AA × Fail

Large Text (above 18pt) WCAG AAA × Fail

Any Text WCAG AAA × Fail

# Black Background



This preview shows how the Android color 4291861638 looks on a black background.

## Color Contrast Check

Large Text (above 18pt) WCAG AA ✓ Pass

Any Text WCAG AA ✓ Pass

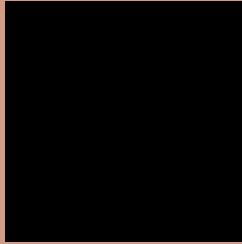
Large Text (above 18pt) WCAG AAA ✓ Pass

Any Text WCAG AAA ✓ Pass

If you want to check with other color combinations, try the [Color Contrast Checker](#).



# Android 4291861638 Background



This preview shows how black text looks on a background with the Android color 4291861638.



This preview shows how white text looks on a background with the Android color 4291861638.

# Color Blindness Simulation

Color vision deficiency is a very complex topic, and I could not describe the different causes any better than Wikipedia does, so if you want to learn more, you should check out their [article about color blindness](#).

## Dichromacy



**Original Color**  
4291861638

**Protanopia**  
4289832843

**Deuteranopia**  
4291076485



**Tritanopia**  
4292057251

# Trichromacy



**Original Color**  
4291861638

**Protanomaly**  
4290552713

**Deuteranomaly**  
4291338117

**Tritanomaly**  
4291991960

# Monochromacy



**Original Color**  
4291861638

**Achromatopsia**  
4289309097

**Achromatomaly**  
4290225308

# CSS Examples

## Text

The CSS property to change the color of the text to Android 4291861638 is called "color". The color property can be set on classes, ids or directly on the HTML element.

This example shows how text in the color `rgb(208, 156, 134)` looks like.

```
.text, #text, p{  
    color:rgb(208, 156, 134)  
}
```

If you want to add a text shadow in that color use the text-shadow property, you can generate a text shadow directly with our [CSS Text Shadow Generator](#).

Here you see how black text with a 4 pixel rgb(208, 156, 134) colored shadow looks like.

```
.shadow{ text-shadow: 4px 4px 2px rgb(208, 156, 134) }
```

## Border

The CSS property to change the border of an element to Android 4291861638 is called "border". The border property can be set on classes, ids or directly on the HTML element.

This example shows the color as border, it can be applied via the CSS property "border" or "border-color".

```
.border, #border, table{ border:4px solid rgb(208, 156, 134) }
```

If only the border color should be changed use the property `border-color`.

```
.border{ border-color:rgb(208, 156, 134) }
```

If you want to add a box shadow in that color use:

Here you see how a box with a 4 pixel `rgb(208, 156, 134)` colored shadow looks like.

```
.boxshadow{ -moz-box-shadow:4px 4px 4px  
4px rgb(208, 156, 134); -webkit-box-  
shadow:4px 4px 4px 4px rgb(208, 156, 134);  
box-shadow:4px 4px 4px 4px rgb(208, 156,  
134) }
```

# Background

The CSS property to change the background color of an element to Android 4291861638 is called "background". The background property can be set on classes, ids or directly on the HTML element.

```
.background, #background, body{  
background: rgb(208, 156, 134) }
```

If only the background color should be changed can be used:

```
.background{ background-color: rgb(208,  
156, 134) }
```

This example shows the color as background, it is applied via the CSS property "background".

To optimize and compress your CSS code, you can use our [online CSS compressor and optimizer](#) based on csstidy. If you want to create a linear or radial gradient as background or border, check our [CSS Gradient Generator](#).



Hey! You found this booklet interesting? Support Converting Colors with the new Membership Option!

The pro membership hides all ads, plus gives you double the colors in the color bucket, and more awesome pro features!

**[Learn more, Memberships starting at \\$2.50/m!](#)**

**Follow me  
on Twitter!**

@ConvertingColor