

# Converting Colors

Android(4291865744)

Have a look what the booklet for  
Android(4291865744) contains.

<b>Android(4291865744)</b> .....	3
<b><i>Conversions</i></b> .....	4
<b><i>Details</i></b> .....	6
<b><i>Harmonies</i></b> .....	11
<b><i>Previews</i></b> .....	23
<b><i>Color Blindness Simulation</i></b> .....	26
<b><i>CSS Examples</i></b> .....	29

# **Color**

**Android(4291865744)**

# Conversions

## Conversions Part 1

Format	Color
Hex	D0AC90
RGB	208, 172, 144
RGB Percent	82%, 67%, 56%
CMY	0.1843, 0.3255, 0.4353
CMYK	0.00, 0.17, 0.31, 0.18
HSL	26°, 41%, 69%
HSV	26°, 31%, 82%
XYZ	45.7990, 44.9286, 32.6438
YIQ	179.5720, 30.4440, -1.0760

# Conversions

## Conversions Part 2

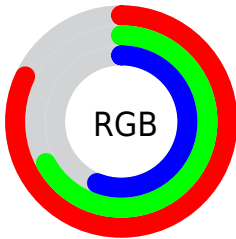
<b>Format</b>	<b>Color</b>
R <sub>YB</sub>	208, 194, 144
Decimal	13675664
CIE Lab	72.84, 9.04, 19.32
CIE LCh	73, 21.333, 64.931
Yxy	44.9286, 0.3712, 0.3642
Android (android.graphics.Color)	4291865744 (0xFFD0AC90)
YUV	179.5720, -17.5370, 24.9314
Hunter-Lab	67.0288, 4.6640, 18.0452

# Details

The Android color `4291865744` is a light color, and the websafe version is hex `CC9999`. A complement of this color would be `4287673552`, and the grayscale version is `4290032820`.

A 20% lighter version of the original color is `4294960070`, and `4288247901` is the 20% darker color. If you saturate the color by 10%, you get `4291862651`, and if you desaturate by 10%, it is `4291868837`.

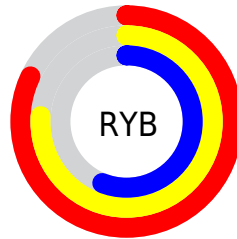
# Distribution



Red (82%)

Green (67%)

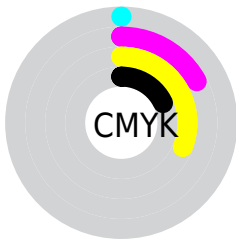
Blue (56%)



Red (82%)

Yellow (76%)

Blue (56%)

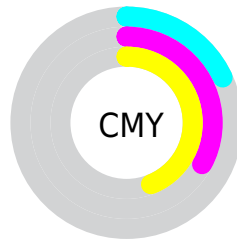


Cyan (0%)

Magenta (17%)

Yellow (31%)

Black (18%)



Cyan (18%)

Magenta (33%)

Yellow (44%)

# Brightness & Saturation Gradients

These gradients show how the Android color 4291865744 changes by changing the brightness by 10 percent. The first figure shows a shift by +10% for each color and the second figure -10%.

Similar to the brightness gradients but the following saturation gradients show a change of the Android color 4291865744 by changing the saturation by 10% instead.





4291865744



4291865744

4294967295



4290023798



4294960070



4288247901



4294967266



4286472006



4284761903



4283117850



4281605120



4280091392



4278190080



4291865744



4291865744

 4291862651

 4291868837

 4291859814

 4291871674

 4291856722

 4291874766

 4291853629

 4291877859

 4291850792

 4291880696

 4291847699

 4291883775

 4291844864

 4291886847

 4291887103

# Harmonies

## Analogous

The Analogous color harmony consists of three colors that are next to each other on the color wheel.



4292519837



4291865744



4290687628

# Triad

The Triadic color harmony groups three colors that are evenly spaced from another and form a triangle on the color wheel.



4291865744



4286758581



4290424275

# Complementary

The Complementary color scheme is a pair of colors which are on the opposite of each other on the color wheel.



4291865744



4287673552

# Split Complementary

Split-complementary colors differ from the complementary color scheme. The scheme consists of three colors, the original color and two neighbors of the complement color.



4288721881



4291865744



4286430664

# Square

The Square scheme is like the rectangle color scheme, but the four colors are evenly spaced on the color wheel.



4291865744



4287872162



4287216086



4291798980

# Rectangle

The Rectangle color scheme consists of four colors that form a rectangle on the color wheel.



4291865744



4289771407



4287216086



4289900502



# Sweetspot

The Sweet Spot groups the original color and five complimentary colors.



4291865744



4294963944



4291858612



4286609521



4278190080



4286611584



# Same Dimension

The Same Dimension uses a secret algorithm to generate beautiful new colors.



4291865744



4294953633



4291873936



4285096798



4289219072



4280881664

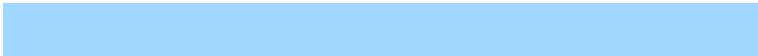


# Inverse Universe

The Inverse Universe completely reimagines the original color for something new.



4287673552



4288796415



4287665360



4284376169



4278214568



4278196009



# Previews

## White Background



This preview shows how the Android color 4291865744 looks on a white background.

## Color Contrast Check

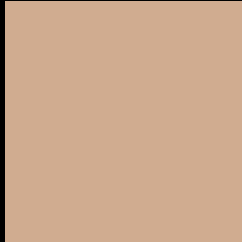
Large Text (above 18pt) WCAG AA × Fail

Any Text WCAG AA × Fail

Large Text (above 18pt) WCAG AAA × Fail

Any Text WCAG AAA × Fail

# Black Background



This preview shows how the Android color 4291865744 looks on a black background.

## Color Contrast Check

Large Text (above 18pt) WCAG AA ✓ Pass

Any Text WCAG AA ✓ Pass

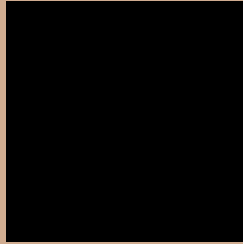
Large Text (above 18pt) WCAG AAA ✓ Pass

Any Text WCAG AAA ✓ Pass

If you want to check with other color combinations, try the [Color Contrast Checker](#).



# Android 4291865744 Background



This preview shows how black text looks on a background with the Android color 4291865744.



This preview shows how white text looks on a background with the Android color 4291865744.

# Color Blindness Simulation

Color vision deficiency is a very complex topic, and I could not describe the different causes any better than Wikipedia does, so if you want to learn more, you should check out their [article about color blindness](#).

## Dichromacy



**Original Color**  
4291865744

**Protanopia**  
4290622355

**Deuteranopia**  
4291865744



**Tritanopia**  
4292126644

# Trichromacy



**Original Color**  
4291865744

**Protanomaly**  
4291080338

**Deuteranomaly**  
4291865744

**Tritanomaly**  
4292061607

# Monochromacy



**Original Color**  
4291865744

**Achromatopsia**  
4290032820

**Achromatomaly**  
4290687399

# CSS Examples

## Text

The CSS property to change the color of the text to Android 4291865744 is called "color". The color property can be set on classes, ids or directly on the HTML element.

This example shows how text in the color `rgb(208, 172, 144)` looks like.

```
.text, #text, p{  
    color:rgb(208, 172, 144)  
}
```

If you want to add a text shadow in that color use the text-shadow property, you can generate a text shadow directly with our [CSS Text Shadow Generator](#).

Here you see how black text with a 4 pixel rgb(208, 172, 144) colored shadow looks like.

```
.shadow{ text-shadow: 4px 4px 2px rgb(208, 172, 144) }
```

## Border

The CSS property to change the border of an element to Android 4291865744 is called "border". The border property can be set on classes, ids or directly on the HTML element.

This example shows the color as border, it can be applied via the CSS property "border" or "border-color".

```
.border, #border, table{ border:4px solid rgb(208, 172, 144) }
```

If only the border color should be changed use the property `border-color`.

```
.border{ border-color:rgb(208, 172, 144) }
```

If you want to add a box shadow in that color use:

Here you see how a box with a 4 pixel `rgb(208, 172, 144)` colored shadow looks like.

```
.boxshadow{ -moz-box-shadow:4px 4px 4px  
4px rgb(208, 172, 144); -webkit-box-  
shadow:4px 4px 4px 4px rgb(208, 172, 144);  
box-shadow:4px 4px 4px 4px rgb(208, 172,  
144) }
```

# Background

The CSS property to change the background color of an element to Android 4291865744 is called "background". The background property can be set on classes, ids or directly on the HTML element.

```
.background, #background, body{  
background: rgb(208, 172, 144) }
```

If only the background color should be changed can be used:

```
.background{ background-color: rgb(208,  
172, 144) }
```

This example shows the color as background, it is applied via the CSS property "background".

To optimize and compress your CSS code, you can use our [online CSS compressor and optimizer](#) based on csstidy. If you want to create a linear or radial gradient as background or border, check our [CSS Gradient Generator](#).



Hey! You found this booklet interesting? Support Converting Colors with the new Membership Option!

The pro membership hides all ads, plus gives you double the colors in the color bucket, and more awesome pro features!

**[Learn more, Memberships starting at \\$2.50/m!](#)**

**Follow me  
on Twitter!**

@ConvertingColor