

# Converting Colors

Android(4291866808)

Have a look what the booklet for  
Android(4291866808) contains.

<b>Android(4291866808)</b> .....	3
<b><i>Conversions</i></b> .....	4
<b><i>Details</i></b> .....	6
<b><i>Harmonies</i></b> .....	11
<b><i>Previews</i></b> .....	23
<b><i>Color Blindness Simulation</i></b> .....	26
<b><i>CSS Examples</i></b> .....	29

# **Color**

**Android(4291866808)**

# Conversions

## Conversions Part 1

Format	Color
Hex	D0B0B8
RGB	208, 176, 184
RGB Percent	82%, 69%, 72%
CMY	0.1843, 0.3098, 0.2784
CMYK	0.00, 0.15, 0.12, 0.18
HSL	345°, 25%, 75%
HSV	345°, 15%, 82%
XYZ	50.1895, 47.9213, 51.9519
YIQ	186.4800, 16.5040, 9.2720

# Conversions

## Conversions Part 2

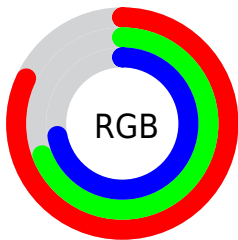
<b>Format</b>	<b>Color</b>
R <sub>Y</sub> B	208, 176, 184
Decimal	13676728
CIE Lab	74.78, 12.86, 0.23
CIE LCh	75, 12.866, 1.009
Yxy	47.9213, 0.3345, 0.3193
Android (android.graphics.Color)	4291866808 (0xFFD0B0B8)
YUV	186.4800, -1.2226, 18.8730
Hunter-Lab	69.2252, 8.2716, 3.9619

# Details

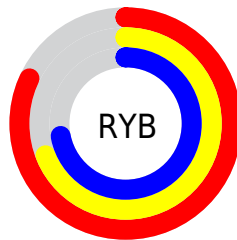
The Android color `4291866808` is a light color, and the websafe version is hex `CC9999`. A complement of this color would be `4289777864`, and the grayscale version is `4290427578`.

A 20% lighter version of the original color is `4294961392`, and `4288248707` is the 20% darker color. If you saturate the color by 10%, you get `4291861416`, and if you desaturate by 10%, it is `4291872200`.

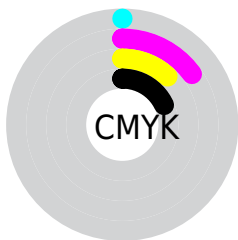
# Distribution



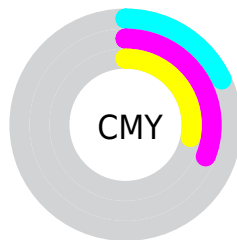
- Red (82%)
- Green (69%)
- Blue (72%)



- Red (82%)
- Yellow (69%)
- Blue (72%)



- Cyan (0%)
- Magenta (15%)
- Yellow (12%)
- Black (18%)




- Cyan (18%)
- Magenta (31%)
- Yellow (28%)

# Brightness & Saturation Gradients

These gradients show how the Android color 4291866808 changes by changing the brightness by 10 percent. The first figure shows a shift by +10% for each color and the second figure -10%.

Similar to the brightness gradients but the following saturation gradients show a change of the Android color 4291866808 by changing the saturation by 10% instead.



 4291866808

 4291866808

4294967295

 4290024861

 4294961392

 4288248707

 4286538346

 4284893778

 4283315259

 4281736741

 4280354576

 4278190080

 4291866808

 4291866808

 4291861416

 4291872200

 4291856025


 4291877591

 4291850889

 4291882727

 4291845498

 4291887094

 4291840106

 4291887103

 4291834714

 4291829323

 4291824187

 4291821620

# Harmonies

## Analogous

The Analogous color harmony consists of three colors that are next to each other on the color wheel.



4291343044



4291866808



4291932588

# Triad

The Triadic color harmony groups three colors that are evenly spaced from another and form a triangle on the color wheel.



4291866808



4290034596



4288724172

# Complementary

The Complementary color scheme is a pair of colors which are on the opposite of each other on the color wheel.



4291866808



4289777864

# Split Complementary

Split-complementary colors differ from the complementary color scheme. The scheme consists of three colors, the original color and two neighbors of the complement color.



4288331716



4291866808



4289183404

# Square

The Square scheme is like the rectangle color scheme, but the four colors are evenly spaced on the color wheel.



4291866808



4290885537



4288528312



4289509839

# Rectangle

The Rectangle color scheme consists of four colors that form a rectangle on the color wheel.



4291866808



4291736230



4288528312



4288527818

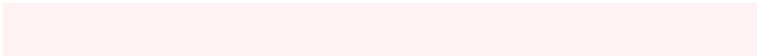


# Sweetspot

The Sweet Spot groups the original color and five complimentary colors.



4291866808



4294963957



4291342544



4286609530



4278190080



4286611584



# Same Dimension

The Same Dimension uses a secret algorithm to generate beautiful new colors.



4291866808



4294955485



4291868848



4285095521



4289200170



4280877066



# Inverse Universe

The Inverse Universe completely reimagines the original color for something new.



4291866808



4294955485



4289775824



4285095521



4289200170

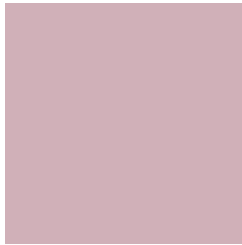


4280877066



# Previews

## White Background



This preview shows how the Android color 4291866808 looks on a white background.

## Color Contrast Check

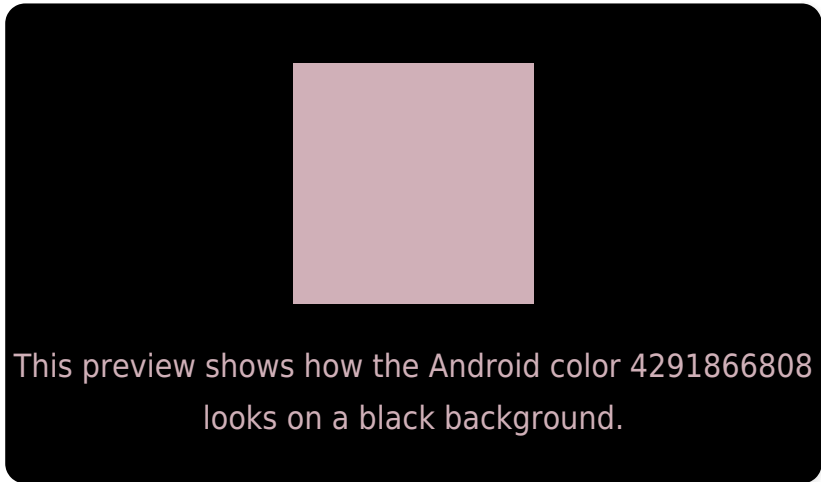
Large Text (above 18pt) WCAG AA × Fail

Any Text WCAG AA × Fail

Large Text (above 18pt) WCAG AAA × Fail

Any Text WCAG AAA × Fail

# Black Background



## Color Contrast Check

Large Text (above 18pt) WCAG AA ✓ Pass

Any Text WCAG AA ✓ Pass

Large Text (above 18pt) WCAG AAA ✓ Pass

Any Text WCAG AAA ✓ Pass

If you want to check with other color combinations, try the [Color Contrast Checker](#).



# Android 4291866808 Background



This preview shows how black text looks on a background with the Android color 4291866808.



This preview shows how white text looks on a background with the Android color 4291866808.

# Color Blindness Simulation

Color vision deficiency is a very complex topic, and I could not describe the different causes any better than Wikipedia does, so if you want to learn more, you should check out their [article about color blindness](#).

## Dichromacy



**Original Color**  
4291866808

**Protanopia**  
4290426812

**Deuteranopia**  
4291474104



**Tritanopia**  
4291932093

# Trichromacy



**Original Color**  
4291866808

**Protanomaly**  
4290950331

**Deuteranomaly**  
4291604920

**Tritanomaly**  
4291932091

# Monochromacy



**Original Color**  
4291866808

**Achromatopsia**  
4290427578

**Achromatomaly**  
4290950841

# CSS Examples

## Text

The CSS property to change the color of the text to Android 4291866808 is called "color". The color property can be set on classes, ids or directly on the HTML element.

This example shows how text in the color `rgb(208, 176, 184)` looks like.

```
.text, #text, p{  
    color:rgb(208, 176, 184)  
}
```

If you want to add a text shadow in that color use the text-shadow property, you can generate a text shadow directly with our [CSS Text Shadow Generator](#).

Here you see how black text with a 4 pixel rgb(208, 176, 184) colored shadow looks like.

```
.shadow{ text-shadow: 4px 4px 2px rgb(208, 176, 184) }
```

## Border

The CSS property to change the border of an element to Android 4291866808 is called "border". The border property can be set on classes, ids or directly on the HTML element.

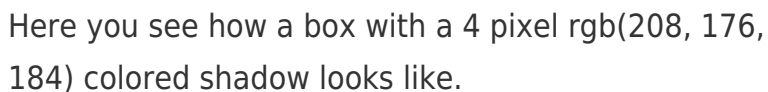
This example shows the color as border, it can be applied via the CSS property "border" or "border-color".

```
.border, #border, table{ border:4px solid rgb(208, 176, 184) }
```

If only the border color should be changed use the property `border-color`.

```
.border{ border-color:rgb(208, 176, 184) }
```

If you want to add a box shadow in that color use:



Here you see how a box with a 4 pixel `rgb(208, 176, 184)` colored shadow looks like.

```
.boxshadow{ -moz-box-shadow:4px 4px 4px 4px rgb(208, 176, 184); -webkit-box-shadow:4px 4px 4px 4px rgb(208, 176, 184); box-shadow:4px 4px 4px 4px rgb(208, 176, 184) }
```

# Background

The CSS property to change the background color of an element to Android 4291866808 is called "background". The background property can be set on classes, ids or directly on the HTML element.

```
.background, #background, body{  
background: rgb(208, 176, 184) }
```

If only the background color should be changed can be used:

```
.background{ background-color: rgb(208,  
176, 184) }
```

This example shows the color as background, it is applied via the CSS property "background".

To optimize and compress your CSS code, you can use our [online CSS compressor and optimizer](#) based on csstidy. If you want to create a linear or radial gradient as background or border, check our [CSS Gradient Generator](#).



Hey! You found this booklet interesting? Support Converting Colors with the new Membership Option!

The pro membership hides all ads, plus gives you double the colors in the color bucket, and more awesome pro features!

**[Learn more, Memberships starting at \\$2.50/m!](#)**

**Follow me  
on Twitter!**

@ConvertingColor