

Converting Colors

Android(4291869125)

Have a look what the booklet for
Android(4291869125) contains.

Android(4291869125)	3
<i>Conversions</i>	4
<i>Details</i>	6
<i>Harmonies</i>	11
<i>Previews</i>	23
<i>Color Blindness Simulation</i>	26
<i>CSS Examples</i>	29

Color

Android(4291869125)

Conversions

Conversions Part 1

Format	Color
Hex	D0B9C5
RGB	208, 185, 197
RGB Percent	82%, 73%, 77%
CMY	0.1843, 0.2745, 0.2275
CMYK	0.00, 0.11, 0.05, 0.18
HSL	329°, 20%, 77%
HSV	329°, 11%, 82%
XYZ	53.4394, 52.1390, 60.0706
YIQ	193.2450, 9.8560, 8.6080

Conversions

Conversions Part 2

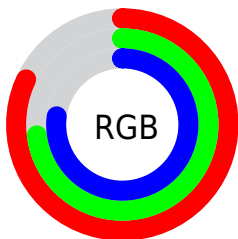
Format	Color
R _Y B	208, 185, 197
Decimal	13679045
CIE Lab	77.36, 10.25, -3.06
CIE LCh	77, 10.695, 343.371
Yxy	52.1390, 0.3226, 0.3148
Android (android.graphics.Color)	4291869125 (0xFFD0B9C5)
YUV	193.2450, 1.8512, 12.9401
Hunter-Lab	72.2074, 5.7419, 1.2207

Details

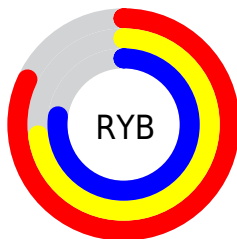
The Android color `4291869125` is a light color, and the websafe version is hex `CCCCCC`. A complement of this color would be `4290367684`, and the grayscale version is `4290888129`.

A 20% lighter version of the original color is `4294963710`, and `4288316559` is the 20% darker color. If you saturate the color by 10%, you get `4291863739`, and if you desaturate by 10%, it is `4291874511`.

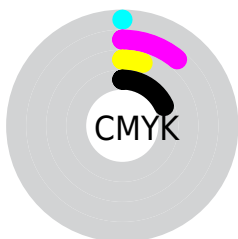
Distribution



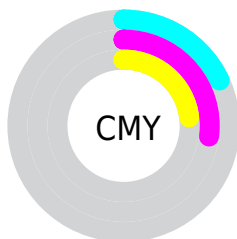
- Red (82%)
- Green (73%)
- Blue (77%)



- Red (82%)
- Yellow (73%)
- Blue (77%)



- Cyan (0%)
- Magenta (11%)
- Yellow (5%)
- Black (18%)



- Cyan (18%)
- Magenta (27%)
- Yellow (23%)

Brightness & Saturation Gradients

These gradients show how the Android color 4291869125 changes by changing the brightness by 10 percent. The first figure shows a shift by +10% for each color and the second figure -10%.

Similar to the brightness gradients but the following saturation gradients show a change of the Android color 4291869125 by changing the saturation by 10% instead.



4291869125



4291869125

4294967295



4290027178



4294963710



4288316559



4286540662



4284895837



4283317062



4281804335



4280422682



4278190080



4291869125



4291869125

 4291863739

 4291874511

 4291858353

 4291879897

 4291853223

 4291885027

 4291847837

 4291887085

 4291842451

 4291887095

 4291837065

 4291887103

 4291831679

 4291826549

 4291821677

Harmonies

Analogous

The Analogous color harmony consists of three colors that are next to each other on the color wheel.



4291214286



4291869125



4292196539

Triad

The Triadic color harmony groups three colors that are evenly spaced from another and form a triangle on the color wheel.



4291869125



4291018924



4289250508

Complementary

The Complementary color scheme is a pair of colors which are on the opposite of each other on the color wheel.



4291869125



4290367684

Split Complementary

Split-complementary colors differ from the complementary color scheme. The scheme consists of three colors, the original color and two neighbors of the complement color.



4289185219



4291869125



4290233265

Square

The Square scheme is like the rectangle color scheme, but the four colors are evenly spaced on the color wheel.



4291869125



4291673516



4289578425



4289708754

Rectangle

The Rectangle color scheme consists of four colors that form a rectangle on the color wheel.



4291869125



4292131253



4289578425



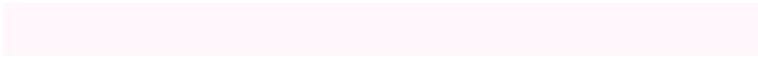
4289185226

Sweetspot

The Sweet Spot groups the original color and five complimentary colors.



4291869125



4294965243



4291082704



4286610045



4278190080



4286611584

Same Dimension

The Same Dimension uses a secret algorithm to generate beautiful new colors.



4291869125



4294958831



4291869114



4285095524



4289200216



4280877077

Inverse Universe

The Inverse Universe completely reimagines the original color for something new.



4291869125



4294958831



4290367695



4285095524



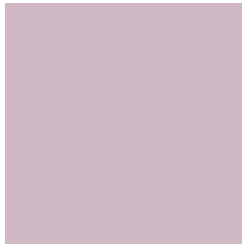
4289200216



4280877077

Previews

White Background



This preview shows how the Android color 4291869125 looks on a white background.

Color Contrast Check

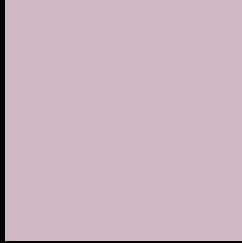
Large Text (above 18pt) WCAG AA × Fail

Any Text WCAG AA × Fail

Large Text (above 18pt) WCAG AAA × Fail

Any Text WCAG AAA × Fail

Black Background



This preview shows how the Android color 4291869125 looks on a black background.

Color Contrast Check

Large Text (above 18pt) WCAG AA ✓ Pass

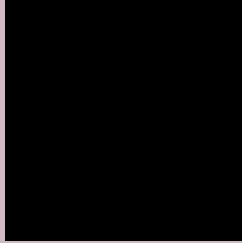
Any Text WCAG AA ✓ Pass

Large Text (above 18pt) WCAG AAA ✓ Pass

Any Text WCAG AAA ✓ Pass

If you want to check with other color combinations, try the [Color Contrast Checker](#).

Android 4291869125 Background



This preview shows how black text looks on a background with the Android color 4291869125.



This preview shows how white text looks on a background with the Android color 4291869125.

Color Blindness Simulation

Color vision deficiency is a very complex topic, and I could not describe the different causes any better than Wikipedia does, so if you want to learn more, you should check out their [article about color blindness](#).

Dichromacy



Original Color


4291869125

Protanopia

4290821832

Deuteranopia

4291803589



Tritanopia
4291869127

Trichromacy



Original Color
4291869125

Protanomaly
4291214535

Deuteranomaly
4291803589

Tritanomaly
4291869126

Monochromacy



Original Color
4291869125

Achromatopsia
4290888129

Achromatomaly
4291215042

CSS Examples

Text

The CSS property to change the color of the text to Android 4291869125 is called "color". The color property can be set on classes, ids or directly on the HTML element.

This example shows how text in the color `rgb(208, 185, 197)` looks like.

```
.text, #text, p{  
    color:rgb(208, 185, 197)  
}
```

If you want to add a text shadow in that color use the text-shadow property, you can generate a text shadow directly with our [CSS Text Shadow Generator](#).

Here you see how black text with a 4 pixel rgb(208, 185, 197) colored shadow looks like.

```
.shadow{ text-shadow: 4px 4px 2px rgb(208, 185, 197) }
```

Border

The CSS property to change the border of an element to Android 4291869125 is called "border". The border property can be set on classes, ids or directly on the HTML element.

This example shows the color as border, it can be applied via the CSS property "border" or "border-color".

```
.border, #border, table{ border:4px solid rgb(208, 185, 197) }
```

If only the border color should be changed use the property `border-color`.

```
.border{ border-color:rgb(208, 185, 197) }
```

If you want to add a box shadow in that color use:

Here you see how a box with a 4 pixel `rgb(208, 185, 197)` colored shadow looks like.

```
.boxshadow{ -moz-box-shadow:4px 4px 4px  
4px rgb(208, 185, 197); -webkit-box-  
shadow:4px 4px 4px 4px rgb(208, 185, 197);  
box-shadow:4px 4px 4px 4px rgb(208, 185,  
197) }
```

Background

The CSS property to change the background color of an element to Android 4291869125 is called "background". The background property can be set on classes, ids or directly on the HTML element.

```
.background, #background, body{  
background: rgb(208, 185, 197) }
```

If only the background color should be changed can be used:

```
.background{ background-color: rgb(208,  
185, 197) }
```

This example shows the color as background, it is applied via the CSS property "background".

To optimize and compress your CSS code, you can use our [online CSS compressor and optimizer](#) based on csstidy. If you want to create a linear or radial gradient as background or border, check our [CSS Gradient Generator](#).

Hey! You found this booklet interesting? Support Converting Colors with the new Membership Option!

The pro membership hides all ads, plus gives you double the colors in the color bucket, and more awesome pro features!

[Learn more, Memberships starting at \\$2.50/m!](#)

**Follow me
on Twitter!**

@ConvertingColor