

Converting Colors

Android(4291897968)

Have a look what the booklet for
Android(4291897968) contains.

Android(4291897968)	3
<i>Conversions</i>	4
<i>Details</i>	6
<i>Harmonies</i>	11
<i>Previews</i>	23
<i>Color Blindness Simulation</i>	26
<i>CSS Examples</i>	29

Color

Android(4291897968)

Conversions

Conversions Part 1

Format	Color
Hex	D12A70
RGB	209, 42, 112
RGB Percent	82%, 16%, 44%
CMY	0.1804, 0.8353, 0.5608
CMYK	0.00, 0.80, 0.46, 0.18
HSL	335°, 67%, 49%
HSV	335°, 80%, 82%
XYZ	30.0471, 16.3811, 16.9074
YIQ	99.9130, 77.0620, 57.1740

Conversions

Conversions Part 2

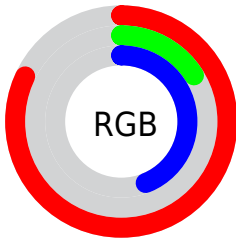
Format	Color
R_{YB}	209, 42, 112
Decimal	13707888
CIE _{Lab}	47.47, 67.03, 1.93
CIE _{LCh}	47, 67.058, 1.652
Yxy	16.3811, 0.4744, 0.2586
Android (android.graphics.Color)	4291897968 (0xFFD12A70)
YUV	99.9130, 5.9589, 95.6693
Hunter-Lab	40.4736, 61.6875, 3.5637

Details

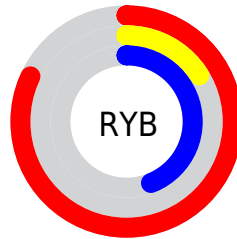
The Android color **4291897968** is a dark color, and the websafe version is hex **CC0066**. The color can be described as dark washed rose. A complement of this color would be **4280996235**, and the grayscale version is **4284769380**.

A 20% lighter version of the original color is **4294928803**, and **4287955009** is the 20% darker color. If you saturate the color by 10%, you get **4291892580**, and if you desaturate by 10%, it is **4291903356**.

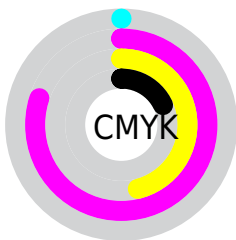
Distribution



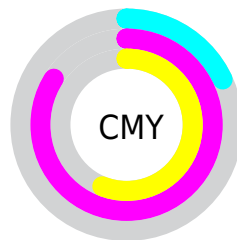
- Red (82%)
- Green (16%)
- Blue (44%)



- Red (82%)
- Yellow (16%)
- Blue (44%)



- Cyan (0%)
- Magenta (80%)
- Yellow (46%)
- Black (18%)



- Cyan (18%)
- Magenta (84%)
- Yellow (56%)

Brightness & Saturation Gradients

These gradients show how the Android color 4291897968 changes by changing the brightness by 10 percent. The first figure shows a shift by +10% for each color and the second figure -10%.

Similar to the brightness gradients but the following saturation gradients show a change of the Android color 4291897968 by changing the saturation by 10% instead.

 4291897968

 4291897968

4294967295

 4289921112

 4294928803

 4287955009

 4294936254

 4285988907

 4294943706

 4284022807

 4294951159

 4282253315

 4294958847

 4279894017

 4294966527

 4278190080

 4291897968

 4291897968

 4291892580

 4291903356

■ 4291887192

■ 4291908744

■ 4291914132

■ 4291919521

■ 4291924909

■ 4291930041

■ 4291935429

■ 4291940817

■ 4291946205

Harmonies

Analogous

The Analogous color harmony consists of three colors that are next to each other on the color wheel.



4290068903



4291897968



4291640121

Triad

The Triadic color harmony groups three colors that are evenly spaced from another and form a triangle on the color wheel.



4291897968



4283203072



4278224084

Complementary

The Complementary color scheme is a pair of colors which are on the opposite of each other on the color wheel.



4291897968



4280996235

Split Complementary

Split-complementary colors differ from the complementary color scheme. The scheme consists of three colors, the original color and two neighbors of the complement color.



4278225323



4291897968



4278224439

Square

The Square scheme is like the rectangle color scheme, but the four colors are evenly spaced on the color wheel.



4291897968



4287000320



4278225266



4278220771

Rectangle

The Rectangle color scheme consists of four colors that form a rectangle on the color wheel.



4291897968



4290596626



4278225266



4278224585

Sweetspot

The Sweet Spot groups the original color and five complimentary colors.



4291897968



4294951643



4287179473



4286602090



4278190080



4286611584

Same Dimension

The Same Dimension uses a secret algorithm to generate beautiful new colors.



4291897968



4294904433



4291900714



4285095522



4289200199



4280877073

Inverse Universe

The Inverse Universe completely reimagines the original color for something new.



4291897968



4294904433



4280993489



4285095522



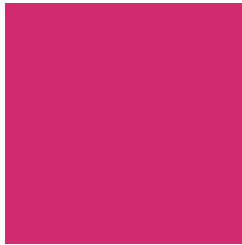
4289200199



4280877073

Previews

White Background



This preview shows how the Android color 4291897968 looks on a white background.

Color Contrast Check

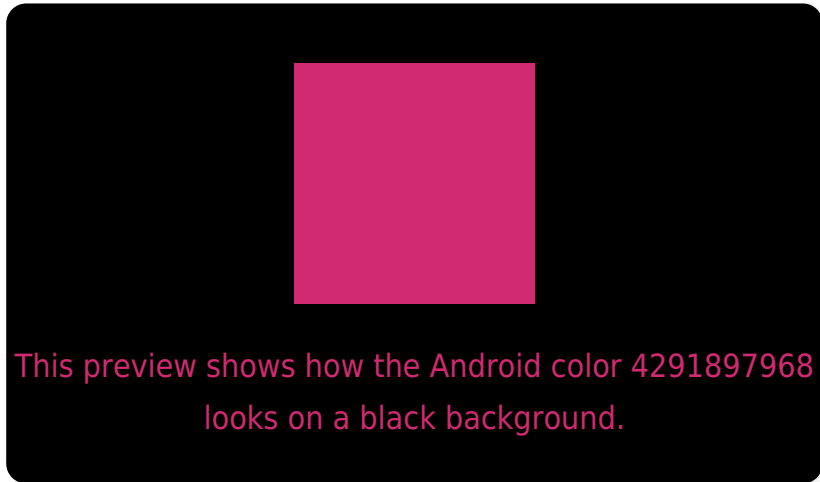
Large Text (above 18pt) WCAG AA ✓ Pass

Any Text WCAG AA ✓ Pass

Large Text (above 18pt) WCAG AAA ✓ Pass

Any Text WCAG AAA × Fail

Black Background



Color Contrast Check

Large Text (above 18pt) WCAG AA ✓ Pass

Any Text WCAG AA × Fail

Large Text (above 18pt) WCAG AAA × Fail

Any Text WCAG AAA × Fail

If you want to check with other color combinations, try the [Color Contrast Checker](#).

Android 4291897968 Background



This preview shows how black text looks on a background with the Android color 4291897968.



This preview shows how white text looks on a background with the Android color 4291897968.

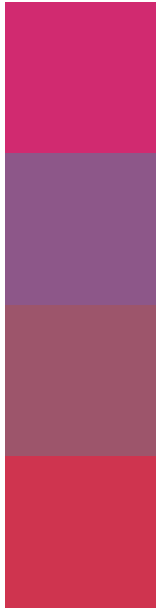
Color Blindness Simulation

Color vision deficiency is a very complex topic, and I could not describe the different causes any better than Wikipedia does, so if you want to learn more, you should check out their [article about color blindness](#).

Dichromacy



Trichromacy



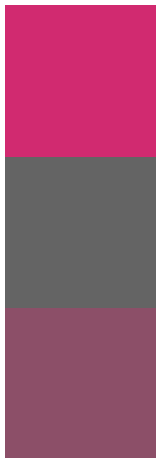
Original Color
4291897968

Protanomaly
4287453065

Deuteranomaly
4288501099

Tritanomaly
4291769423

Monochromacy



Original Color
4291897968

Achromatopsia
4284769380

Achromatomaly
4287385448

CSS Examples

Text

The CSS property to change the color of the text to Android 4291897968 is called "color". The color property can be set on classes, ids or directly on the HTML element.

This example shows how text in the color `rgb(209, 42, 112)` looks like.

```
.text, #text, p{  
    color:rgb(209, 42, 112)  
}
```

If you want to add a text shadow in that color use the text-shadow property, you can generate a text shadow directly with our [CSS Text Shadow Generator](#).

Here you see how black text with a 4 pixel rgb(209, 42, 112) colored shadow looks like.

```
.shadow{ text-shadow: 4px 4px 2px rgb(209, 42, 112) }
```

Border

The CSS property to change the border of an element to Android 4291897968 is called "border". The border property can be set on classes, ids or directly on the HTML element.

This example shows the color as border, it can be applied via the CSS property "border" or "border-color".

```
.border, #border, table{ border:4px solid rgb(209, 42, 112) }
```

If only the border color should be changed use the property `border-color`.

```
.border{ border-color:rgb(209, 42, 112) }
```

If you want to add a box shadow in that color use:

Here you see how a box with a 4 pixel `rgb(209, 42, 112)` colored shadow looks like.

```
.boxshadow{ -moz-box-shadow:4px 4px 4px  
4px rgb(209, 42, 112); -webkit-box-  
shadow:4px 4px 4px 4px rgb(209, 42, 112);  
box-shadow:4px 4px 4px 4px rgb(209, 42,  
112) }
```

Background

The CSS property to change the background color of an element to Android 4291897968 is called "background". The background property can be set on classes, ids or directly on the HTML element.

```
.background, #background, body{  
background: rgb(209, 42, 112) }
```

If only the background color should be changed can be used:

```
.background{ background-color: rgb(209, 42,  
112) }
```

This example shows the color as background, it is applied via the CSS property "background".

To optimize and compress your CSS code, you can use our [online CSS compressor and optimizer](#) based on csstidy. If you want to create a linear or radial gradient as background or border, check our [CSS Gradient Generator](#).

Hey! You found this booklet interesting? Support Converting Colors with the new Membership Option!

The pro membership hides all ads, plus gives you double the colors in the color bucket, and more awesome pro features!

[Learn more, Memberships starting at \\$2.50/m!](#)

**Follow me
on Twitter!**

@ConvertingColor