

# Converting Colors

Android(4291926427)

Have a look what the booklet for  
Android(4291926427) contains.

<b>Android(4291926427)</b> .....	3
<b><i>Conversions</i></b> .....	4
<b><i>Details</i></b> .....	6
<b><i>Harmonies</i></b> .....	11
<b><i>Previews</i></b> .....	23
<b><i>Color Blindness Simulation</i></b> .....	26
<b><i>CSS Examples</i></b> .....	29

# **Color**

**Android(4291926427)**

# Conversions

## Conversions Part 1

Format	Color
Hex	D1999B
RGB	209, 153, 155
RGB Percent	82%, 60%, 61%
CMY	0.1804, 0.4000, 0.3922
CMYK	0.00, 0.27, 0.26, 0.18
HSL	358°, 38%, 71%
HSV	358°, 27%, 82%
XYZ	43.6021, 38.7043, 36.1829
YIQ	169.9720, 32.7340, 12.4940

# Conversions

## Conversions Part 2

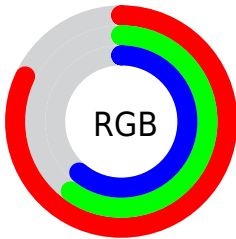
<b>Format</b>	<b>Color</b>
R <sub>Y</sub> B	209, 153, 155
Decimal	13736347
CIE Lab	68.54, 21.24, 7.22
CIE LCh	69, 22.433, 18.781
Yxy	38.7043, 0.3680, 0.3266
Android (android.graphics.Color)	4291926427 (0xFFD1999B)
YUV	169.9720, -7.3812, 34.2276
Hunter-Lab	62.2128, 16.2301, 9.0659

# Details

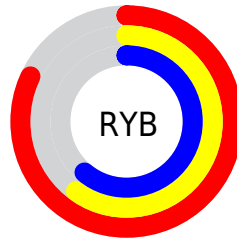
The Android color `4291926427` is a light color, and the websafe version is hex `CC9999`. A complement of this color would be `4288270799`, and the grayscale version is `4289374890`.

A 20% lighter version of the original color is `4294955217`, and `4288243304` is the 20% darker color. If you saturate the color by 10%, you get `4291921031`, and if you desaturate by 10%, it is `4291931823`.

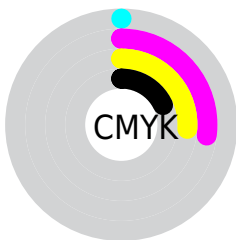
# Distribution



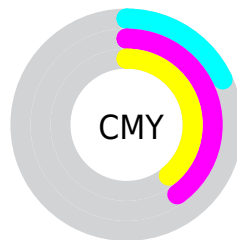
- Red (82%)
- Green (60%)
- Blue (61%)



- Red (82%)
- Yellow (60%)
- Blue (61%)



- Cyan (0%)
- Magenta (27%)
- Yellow (26%)
- Black (18%)



- Cyan (18%)
- Magenta (40%)
- Yellow (39%)

# Brightness & Saturation Gradients

These gradients show how the Android color 4291926427 changes by changing the brightness by 10 percent. The first figure shows a shift by +10% for each color and the second figure -10%.

Similar to the brightness gradients but the following saturation gradients show a change of the Android color 4291926427 by changing the saturation by 10% instead.





4291926427



4291926427

4294967295



4290084737



4294955217



4288243304



4294962414



4286532944



4284823097



4283113252



4281534734



4280025089



4278190080




4291926427



4291926427

 4291921031

 4291931823


 4291915635

 4291937219

 4291910239

 4291942615

 4291904842

 4291948012

 4291899702

 4291952639

 4291894306

 4291888910

 4291887111

# Harmonies

## Analogous

The Analogous color harmony consists of three colors that are next to each other on the color wheel.



4291533232



4291926427



4291599753

# Triad

The Triadic color harmony groups three colors that are evenly spaced from another and form a triangle on the color wheel.



4291926427



4287803276



4286950350

# Complementary

The Complementary color scheme is a pair of colors which are on the opposite of each other on the color wheel.



4291926427



4288270799

# Split Complementary

Split-complementary colors differ from the complementary color scheme. The scheme consists of three colors, the original color and two neighbors of the complement color.



4285640901



4291926427



4286362271

# Square

The Square scheme is like the rectangle color scheme, but the four colors are evenly spaced on the color wheel.



4291926427



4289309313



4285510579



4288718285

# Rectangle

The Rectangle color scheme consists of four colors that form a rectangle on the color wheel.



4291926427



4291010946



4285510579



4286426572



# Sweetspot

The Sweet Spot groups the original color and five complimentary colors.



4291926427



4294962155



4291729873



4286608243



4278190080



4286611584



# Same Dimension

The Same Dimension uses a secret algorithm to generate beautiful new colors.



4291926427



4294946224



4291932825



4285095518



4289200134



4280877057



# Inverse Universe

The Inverse Universe completely reimagines the original color for something new.



4291926427



4294946224



4288264401



4285095518



4289200134



4280877057



# Previews

## White Background



This preview shows how the Android color 4291926427 looks on a white background.

## Color Contrast Check

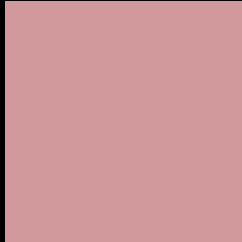
Large Text (above 18pt) WCAG AA × Fail

Any Text WCAG AA × Fail

Large Text (above 18pt) WCAG AAA × Fail

Any Text WCAG AAA × Fail

# Black Background



This preview shows how the Android color 4291926427 looks on a black background.

## Color Contrast Check

Large Text (above 18pt) WCAG AA ✓ Pass

Any Text WCAG AA ✓ Pass

Large Text (above 18pt) WCAG AAA ✓ Pass

Any Text WCAG AAA ✓ Pass

If you want to check with other color combinations, try the [Color Contrast Checker](#).



# Android 4291926427 Background



This preview shows how black text looks on a background with the Android color 4291926427.



This preview shows how white text looks on a background with the Android color 4291926427.

# Color Blindness Simulation

Color vision deficiency is a very complex topic, and I could not describe the different causes any better than Wikipedia does, so if you want to learn more, you should check out their [article about color blindness](#).

## Dichromacy



**Original Color**  
4291926427

**Protanopia**  
4289505187

**Deuteranopia**  
4290618009



**Tritanopia**  
4291991715

# Trichromacy



**Original Color**

4291926427

**Protanomaly**

4290355872

**Deuteranomaly**

4291075994

**Tritanomaly**

4291991712

# Monochromacy



**Original Color**

4291926427

**Achromatopsia**

4289374890

**Achromatomaly**

4290290853

# CSS Examples

## Text

The CSS property to change the color of the text to Android 4291926427 is called "color". The color property can be set on classes, ids or directly on the HTML element.

This example shows how text in the color `rgb(209, 153, 155)` looks like.

```
.text, #text, p{  
    color:rgb(209, 153, 155)  
}
```

If you want to add a text shadow in that color use the text-shadow property, you can generate a text shadow directly with our [CSS Text Shadow Generator](#).

Here you see how black text with a 4 pixel rgb(209, 153, 155) colored shadow looks like.

```
.shadow{ text-shadow: 4px 4px 2px rgb(209, 153, 155) }
```

## Border

The CSS property to change the border of an element to Android 4291926427 is called "border". The border property can be set on classes, ids or directly on the HTML element.

This example shows the color as border, it can be applied via the CSS property "border" or "border-color".

```
.border, #border, table{ border:4px solid rgb(209, 153, 155) }
```

If only the border color should be changed use the property `border-color`.

```
.border{ border-color:rgb(209, 153, 155) }
```

If you want to add a box shadow in that color use:

Here you see how a box with a 4 pixel `rgb(209, 153, 155)` colored shadow looks like.

```
.boxshadow{ -moz-box-shadow:4px 4px 4px  
4px rgb(209, 153, 155); -webkit-box-  
shadow:4px 4px 4px 4px rgb(209, 153, 155);  
box-shadow:4px 4px 4px 4px rgb(209, 153,  
155) }
```

# Background

The CSS property to change the background color of an element to Android 4291926427 is called "background". The background property can be set on classes, ids or directly on the HTML element.

```
.background, #background, body{  
background: rgb(209, 153, 155) }
```

If only the background color should be changed can be used:

```
.background{ background-color: rgb(209,  
153, 155) }
```

This example shows the color as background, it is applied via the CSS property "background".

To optimize and compress your CSS code, you can use our [online CSS compressor and optimizer](#) based on csstidy. If you want to create a linear or radial gradient as background or border, check our [CSS Gradient Generator](#).



Hey! You found this booklet interesting? Support Converting Colors with the new Membership Option!

The pro membership hides all ads, plus gives you double the colors in the color bucket, and more awesome pro features!

**[Learn more, Memberships starting at \\$2.50/m!](#)**

**Follow me  
on Twitter!**

@ConvertingColor