

# Converting Colors

Android(4291932831)

Have a look what the booklet for  
Android(4291932831) contains.

<b>Android(4291932831)</b> .....	3
<b><i>Conversions</i></b> .....	4
<b><i>Details</i></b> .....	6
<b><i>Harmonies</i></b> .....	11
<b><i>Previews</i></b> .....	23
<b><i>Color Blindness Simulation</i></b> .....	26
<b><i>CSS Examples</i></b> .....	29

# **Color**

**Android(4291932831)**

# Conversions

## Conversions Part 1

Format	Color
Hex	D1B29F
RGB	209, 178, 159
RGB Percent	82%, 70%, 62%
CMY	0.1804, 0.3020, 0.3765
CMYK	0.00, 0.15, 0.24, 0.18
HSL	23°, 35%, 72%
HSV	23°, 24%, 82%
XYZ	48.4729, 47.8993, 39.4916
YIQ	185.1030, 24.5750, 0.6630

# Conversions

## Conversions Part 2

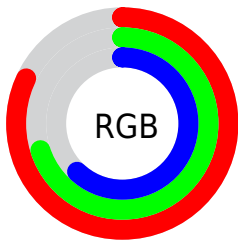
<b>Format</b>	<b>Color</b>
R <sub>Y</sub> B	209, 190, 159
Decimal	13742751
CIE Lab	74.76, 8.26, 13.85
CIE LCh	75, 16.132, 59.189
Yxy	47.8993, 0.3568, 0.3526
Android (android.graphics.Color)	4291932831 (0xFFD1B29F)
YUV	185.1030, -12.8688, 20.9577
Hunter-Lab	69.2093, 3.9017, 14.6150

# Details

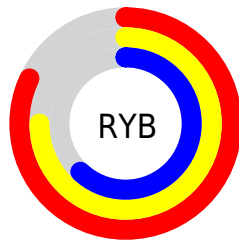
The Android color `4291932831` is a light color, and the websafe version is hex `CC9999`. A complement of this color would be `4288659153`, and the grayscale version is `4290361785`.

A 20% lighter version of the original color is `4294961878`, and `4288314732` is the 20% darker color. If you saturate the color by 10%, you get `4291929482`, and if you desaturate by 10%, it is `4291936180`.

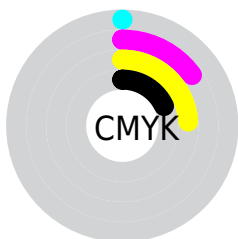
# Distribution



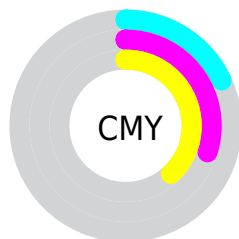
- Red (82%)
- Green (70%)
- Blue (62%)



- Red (82%)
- Yellow (75%)
- Blue (62%)



- Cyan (0%)
- Magenta (15%)
- Yellow (24%)
- Black (18%)



- Cyan (18%)
- Magenta (30%)
- Yellow (38%)

# Brightness & Saturation Gradients

These gradients show how the Android color 4291932831 changes by changing the brightness by 10 percent. The first figure shows a shift by +10% for each color and the second figure -10%.

Similar to the brightness gradients but the following saturation gradients show a change of the Android color 4291932831 by changing the saturation by 10% instead.



 4291932831

 4291932831

4294967295

 4290090885

 4294961878

 4288314732

 4294967282

 4286538835

 4284894268

 4283250214

 4281671698


 4280289792

 4278190080

 4291932831

 4291932831

 4291929482

 4291936180

 4291926133

 4291939529

 4291922784

 4291942878

 4291919435


 4291946227

 4291916086

 4291949567

 4291912738

 4291952639

 4291909389

 4291907328

# Harmonies

## Analogous

The Analogous color harmony consists of three colors that are next to each other on the color wheel.



4292325290



4291932831



4291082138

# Triad

The Triadic color harmony groups three colors that are evenly spaced from another and form a triangle on the color wheel.



4291932831



4288070071



4290426066

# Complementary

The Complementary color scheme is a pair of colors which are on the opposite of each other on the color wheel.



4291932831



4288659153

# Split Complementary

Split-complementary colors differ from the complementary color scheme. The scheme consists of three colors, the original color and two neighbors of the complement color.



4289182165



4291932831



4287742150

# Square

The Square scheme is like the rectangle color scheme, but the four colors are evenly spaced on the color wheel.



4291932831



4288921512



4288200401



4291539143

# Rectangle

The Rectangle color scheme consists of four colors that form a rectangle on the color wheel.



4291932831



4290427548



4288200401



4290033364



# Sweetspot

The Sweet Spot groups the original color and five complimentary colors.



4291932831



4294964461



4291927999



4286609781



4278190080



4286611584



# Same Dimension

The Same Dimension uses a secret algorithm to generate beautiful new colors.



4291932831



4294955445



4291938975



4285096542



4289216512



4280881152

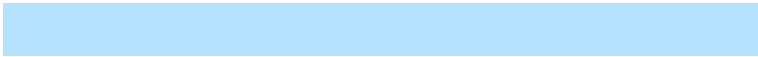


# Inverse Universe

The Inverse Universe completely reimagines the original color for something new.



4288659153



4290110463



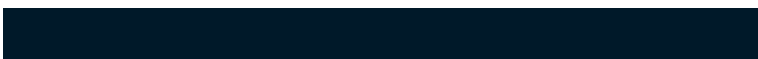
4288653009



4284376425



4278216872



4278196521



# Previews

## White Background



This preview shows how the Android color 4291932831 looks on a white background.

## Color Contrast Check

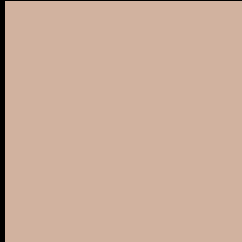
Large Text (above 18pt) WCAG AA × Fail

Any Text WCAG AA × Fail

Large Text (above 18pt) WCAG AAA × Fail

Any Text WCAG AAA × Fail

# Black Background



This preview shows how the Android color 4291932831 looks on a black background.

## Color Contrast Check

Large Text (above 18pt) WCAG AA ✓ Pass

Any Text WCAG AA ✓ Pass

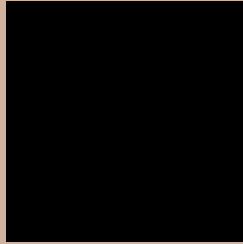
Large Text (above 18pt) WCAG AAA ✓ Pass

Any Text WCAG AAA ✓ Pass

If you want to check with other color combinations, try the [Color Contrast Checker](#).



# Android 4291932831 Background



This preview shows how black text looks on a background with the Android color 4291932831.



This preview shows how white text looks on a background with the Android color 4291932831.

# Color Blindness Simulation

Color vision deficiency is a very complex topic, and I could not describe the different causes any better than Wikipedia does, so if you want to learn more, you should check out their [article about color blindness](#).

## Dichromacy



**Original Color**  
4291932831

**Protanopia**  
4290885794

**Deuteranopia**  
4292063647



**Tritanopia**  
4292128443

# Trichromacy



**Original Color**  
4291932831

**Protanomaly**  
4291278497

**Deuteranomaly**  
4291998111

**Tritanomaly**  
4292063153

# Monochromacy



**Original Color**  
4291932831

**Achromatopsia**  
4290361785

**Achromatomaly**  
4290950832

# CSS Examples

## Text

The CSS property to change the color of the text to Android 4291932831 is called "color". The color property can be set on classes, ids or directly on the HTML element.

This example shows how text in the color `rgb(209, 178, 159)` looks like.

```
.text, #text, p{  
    color:rgb(209, 178, 159)  
}
```

If you want to add a text shadow in that color use the text-shadow property, you can generate a text shadow directly with our [CSS Text Shadow Generator](#).

Here you see how black text with a 4 pixel rgb(209, 178, 159) colored shadow looks like.

```
.shadow{ text-shadow: 4px 4px 2px rgb(209, 178, 159) }
```

## Border

The CSS property to change the border of an element to Android 4291932831 is called "border". The border property can be set on classes, ids or directly on the HTML element.

This example shows the color as border, it can be applied via the CSS property "border" or "border-color".

```
.border, #border, table{ border:4px solid rgb(209, 178, 159) }
```

If only the border color should be changed use the property `border-color`.

```
.border{ border-color:rgb(209, 178, 159) }
```

If you want to add a box shadow in that color use:

Here you see how a box with a 4 pixel `rgb(209, 178, 159)` colored shadow looks like.

```
.boxshadow{ -moz-box-shadow:4px 4px 4px  
4px rgb(209, 178, 159); -webkit-box-  
shadow:4px 4px 4px 4px rgb(209, 178, 159);  
box-shadow:4px 4px 4px 4px rgb(209, 178,  
159) }
```

# Background

The CSS property to change the background color of an element to Android 4291932831 is called "background". The background property can be set on classes, ids or directly on the HTML element.

```
.background, #background, body{  
background: rgb(209, 178, 159) }
```

If only the background color should be changed can be used:

```
.background{ background-color: rgb(209,  
178, 159) }
```

This example shows the color as background, it is applied via the CSS property "background".

To optimize and compress your CSS code, you can use our [online CSS compressor and optimizer](#) based on csstidy. If you want to create a linear or radial gradient as background or border, check our [CSS Gradient Generator](#).



Hey! You found this booklet interesting? Support Converting Colors with the new Membership Option!

The pro membership hides all ads, plus gives you double the colors in the color bucket, and more awesome pro features!

**[Learn more, Memberships starting at \\$2.50/m!](#)**

**Follow me  
on Twitter!**

@ConvertingColor