

# Converting Colors

Android(4291933876)

Have a look what the booklet for  
Android(4291933876) contains.

<b>Android(4291933876)</b> .....	3
<b><i>Conversions</i></b> .....	4
<b><i>Details</i></b> .....	6
<b><i>Harmonies</i></b> .....	11
<b><i>Previews</i></b> .....	23
<b><i>Color Blindness Simulation</i></b> .....	26
<b><i>CSS Examples</i></b> .....	29

# **Color**

**Android(4291933876)**

# Conversions

## Conversions Part 1

Format	Color
Hex	D1B6B4
RGB	209, 182, 180
RGB Percent	82%, 71%, 71%
CMY	0.1804, 0.2863, 0.2941
CMYK	0.00, 0.13, 0.14, 0.18
HSL	4°, 24%, 76%
HSV	4°, 14%, 82%
XYZ	51.2607, 50.3065, 50.1884
YIQ	189.8450, 16.7340, 5.1020

# Conversions

## Conversions Part 2

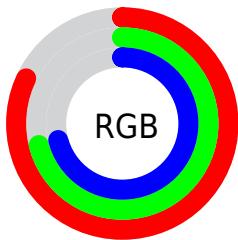
<b>Format</b>	<b>Color</b>
<b>R<sub>YB</sub></b>	209, 182, 180
Decimal	13743796
CIE <sub>Lab</sub>	76.26, 9.33, 4.57
CIE <sub>LCh</sub>	76, 10.391, 26.092
Yxy	50.3065, 0.3378, 0.3315
Android (android.graphics.Color)	4291933876 (0xFFD1B6B4)
YUV	189.8450, -4.8536, 16.7989
Hunter-Lab	70.9271, 4.8838, 7.6950

# Details

The Android color `4291933876` is a light color, and the websafe version is hex `CCCCCC`. A complement of this color would be `4290039761`, and the grayscale version is `4290690750`.

A 20% lighter version of the original color is `4294962924`, and `4288315775` is the 20% darker color. If you saturate the color by 10%, you get `4291928991`, and if you desaturate by 10%, it is `4291938761`.

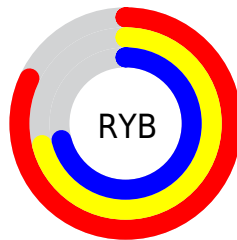
# Distribution



Red (82%)

Green (71%)

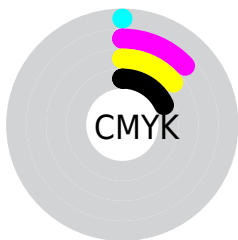
Blue (71%)



Red (82%)

Yellow (71%)

Blue (71%)

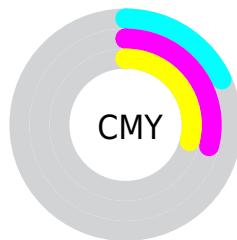


Cyan (0%)

Magenta (13%)

Yellow (14%)

Black (18%)



Cyan (18%)

Magenta (29%)


Yellow (29%)


# Brightness & Saturation Gradients

These gradients show how the Android color 4291933876 changes by changing the brightness by 10 percent. The first figure shows a shift by +10% for each color and the second figure -10%.

Similar to the brightness gradients but the following saturation gradients show a change of the Android color 4291933876 by changing the saturation by 10% instead.



 4291933876

 4291933876

4294967295

 4290091929

 4294962924

 4288315775

 4286605414

 4284960846

 4283316536


 4281803554

 4280421900

 4278190080

 4291933876

 4291933876

 4291928991

 4291938761

 4291923850

 4291943902

 4291918965

 4291948787

 4291913824

 4291952639

 4291908940

 4291903799

 4291898914

 4291893773

 4291890688

# Harmonies

## Analogous

The Analogous color harmony consists of three colors that are next to each other on the color wheel.



4291802814



4291933876



4291737772

# Triad

The Triadic color harmony groups three colors that are evenly spaced from another and form a triangle on the color wheel.



4291933876



4289774001



4289838543

# Complementary

The Complementary color scheme is a pair of colors which are on the opposite of each other on the color wheel.



4291933876



4290039761

# Split Complementary

Split-complementary colors differ from the complementary color scheme. The scheme consists of three colors, the original color and two neighbors of the complement color.



4289249484



4291933876



4289184442

# Square

The Square scheme is like the rectangle color scheme, but the four colors are evenly spaced on the color wheel.



4291933876



4290494123



4288987844



4290624205

# Rectangle

The Rectangle color scheme consists of four colors that form a rectangle on the color wheel.



4291933876



4291410602



4288987844



4289576654

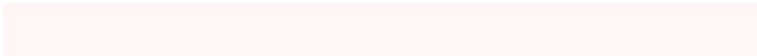


# Sweetspot

The Sweet Spot groups the original color and five complimentary colors.



4291933876



4294964981



4291933391



4286610041



4278190080



4286611584

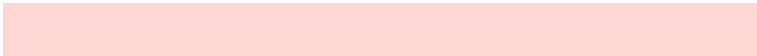


# Same Dimension

The Same Dimension uses a secret algorithm to generate beautiful new colors.



4291933876



4294957012



4291937460



4285095774



4289203200



4280877824



# Inverse Universe

The Inverse Universe completely reimagines the original color for something new.



4290039761



4292148479



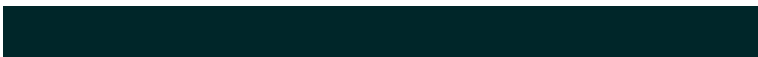
4290036177



4284377193



4278230440

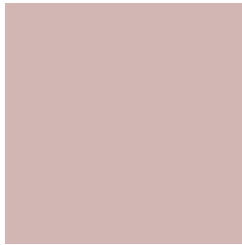


4278199849



# Previews

## White Background



This preview shows how the Android color 4291933876 looks on a white background.

## Color Contrast Check

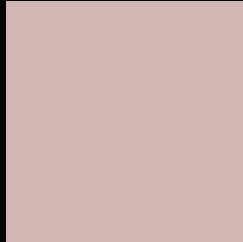
Large Text (above 18pt) WCAG AA × Fail

Any Text WCAG AA × Fail

Large Text (above 18pt) WCAG AAA × Fail

Any Text WCAG AAA × Fail

# Black Background



This preview shows how the Android color 4291933876 looks on a black background.

## Color Contrast Check

Large Text (above 18pt) WCAG AA ✓ Pass

Any Text WCAG AA ✓ Pass

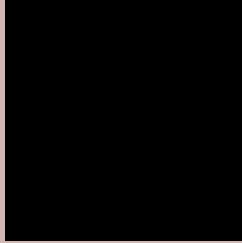
Large Text (above 18pt) WCAG AAA ✓ Pass

Any Text WCAG AAA ✓ Pass

If you want to check with other color combinations, try the [Color Contrast Checker](#).



# Android 4291933876 Background



This preview shows how black text looks on a background with the Android color 4291933876.



This preview shows how white text looks on a background with the Android color 4291933876.

# Color Blindness Simulation

Color vision deficiency is a very complex topic, and I could not describe the different causes any better than Wikipedia does, so if you want to learn more, you should check out their [article about color blindness](#).

## Dichromacy





**Tritanopia**  
4292064450

# Trichromacy



**Original Color**  
4291933876

**Protanomaly**  
4291279286

**Deuteranomaly**  
4291933876

**Tritanomaly**  
4291999165

# Monochromacy



**Original Color**  
4291933876

**Achromatopsia**  
4290690750

**Achromatomaly**  
4291148730

# CSS Examples

## Text

The CSS property to change the color of the text to Android 4291933876 is called "color". The color property can be set on classes, ids or directly on the HTML element.

This example shows how text in the color `rgb(209, 182, 180)` looks like.

```
.text, #text, p{  
    color:rgb(209, 182, 180)  
}
```

If you want to add a text shadow in that color use the text-shadow property, you can generate a text shadow directly with our [CSS Text Shadow Generator](#).

Here you see how black text with a 4 pixel rgb(209, 182, 180) colored shadow looks like.

```
.shadow{ text-shadow: 4px 4px 2px rgb(209, 182, 180) }
```

## Border

The CSS property to change the border of an element to Android 4291933876 is called "border". The border property can be set on classes, ids or directly on the HTML element.

This example shows the color as border, it can be applied via the CSS property "border" or "border-color".

```
.border, #border, table{ border:4px solid rgb(209, 182, 180) }
```

If only the border color should be changed use the property border-color.

```
.border{ border-color:rgb(209, 182, 180) }
```

If you want to add a box shadow in that color use:

Here you see how a box with a 4 pixel rgb(209, 182, 180) colored shadow looks like.

```
.boxshadow{ -moz-box-shadow:4px 4px 4px  
4px rgb(209, 182, 180); -webkit-box-  
shadow:4px 4px 4px 4px rgb(209, 182, 180);  
box-shadow:4px 4px 4px 4px rgb(209, 182,  
180) }
```

# Background

The CSS property to change the background color of an element to Android 4291933876 is called "background". The background property can be set on classes, ids or directly on the HTML element.

```
.background, #background, body{  
background: rgb(209, 182, 180) }
```

If only the background color should be changed can be used:

```
.background{ background-color: rgb(209,  
182, 180) }
```

This example shows the color as background, it is applied via the CSS property "background".

To optimize and compress your CSS code, you can use our [online CSS compressor and optimizer](#) based on csstidy. If you want to create a linear or radial gradient as background or border, check our [CSS Gradient Generator](#).



Hey! You found this booklet interesting? Support Converting Colors with the new Membership Option!

The pro membership hides all ads, plus gives you double the colors in the color bucket, and more awesome pro features!

**[Learn more, Memberships starting at \\$2.50/m!](#)**

**Follow me  
on Twitter!**

@ConvertingColor