

# Converting Colors

Android(4291936181)

Have a look what the booklet for  
Android(4291936181) contains.

|  |    |
|--|----|
| <b>Android(4291936181)</b> .....               | 3  |
| <i><b>Conversions</b></i> .....                | 4  |
| <i><b>Details</b></i> .....                    | 6  |
| <i><b>Harmonies</b></i> .....                  | 11 |
| <i><b>Previews</b></i> .....                   | 23 |
| <i><b>Color Blindness Simulation</b></i> ..... | 26 |
| <i><b>CSS Examples</b></i> .....               | 29 |

# **Color**

**Android(4291936181)**

# Conversions

## Conversions Part 1

| Format      | Color                     |
|-------------|---------------------------|
| Hex         | D1BFB5                    |
| RGB         | 209, 191, 181             |
| RGB Percent | 82%, 75%, 71%             |
| CMY         | 0.1804, 0.2510, 0.2902    |
| CMYK        | 0.00, 0.09, 0.13, 0.18    |
| HSL         | 21°, 23%, 76%             |
| HSV         | 21°, 13%, 82%             |
| XYZ         | 53.2658, 54.1531, 51.3612 |
| YIQ         | 195.2420, 13.9380, 0.7060 |

# Conversions

## Conversions Part 2

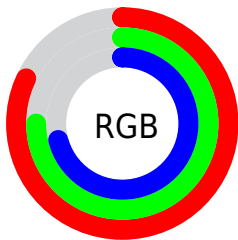
| <b>Format</b>                       | <b>Color</b>                  |
|-------------------------------------|-------------------------------|
| <b>R<sub>YB</sub></b>               | 209, 197, 181                 |
| Decimal                             | 13746101                      |
| CIE <sub>Lab</sub>                  | 78.55, 4.68, 7.33             |
| CIE <sub>LCh</sub>                  | 79, 8.699, 57.428             |
| Yxy                                 | 54.1531, 0.3355,<br>0.3411    |
| Android<br>(android.graphics.Color) | 4291936181<br>(0xFFD1BFB5)    |
| YUV                                 | 195.2420, -7.0213,<br>12.0658 |
| Hunter-Lab                          | 73.5888, 0.4233,<br>10.1307   |

# Details

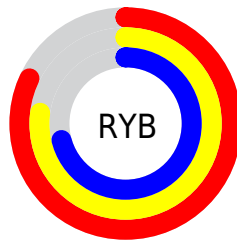
The Android color `4291936181` is a light color, and the websafe version is hex `CCCCCC`. A complement of this color would be `4290103249`, and the grayscale version is `4291019715`.

A 20% lighter version of the original color is `4294965229`, and `4288318080` is the 20% darker color. If you saturate the color by 10%, you get `4291932832`, and if you desaturate by 10%, it is `4291939530`.

# Distribution



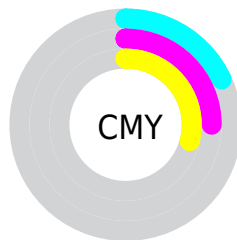
- Red (82%)
- Green (75%)
- Blue (71%)



- Red (82%)
- Yellow (77%)
- Blue (71%)



- Cyan (0%)
- Magenta (9%)
- Yellow (13%)
- Black (18%)



- Cyan (18%)
- Magenta (25%)
- Yellow (29%)

# Brightness & Saturation Gradients

These gradients show how the Android color 4291936181 changes by changing the brightness by 10 percent. The first figure shows a shift by +10% for each color and the second figure -10%.

Similar to the brightness gradients but the following saturation gradients show a change of the Android color 4291936181 by changing the saturation by 10% instead.



 4291936181

 4291936181

4294967295

 4290094234

 4294965229

 4288318080

 4286607463


 4284962895

 4283384120

 4281871139

 4280423949

 4278190080

 4291936181

 4291936181

 4291932832

 4291939530

 4291929227

 4291943135

 4291925878

 4291946484

 4291922273

 4291950079

 4291918925

 4291952639

 4291915320

 4291911971

 4291908622

 4291906304

# Harmonies

## Analogous

The Analogous color harmony consists of three colors that are next to each other on the color wheel.



4292132283



4291936181



4291478194

# Triad

The Triadic color harmony groups three colors that are evenly spaced from another and form a triangle on the color wheel.



4291936181



4289841089



4291019217

# Complementary

The Complementary color scheme is a pair of colors which are on the opposite of each other on the color wheel.



4291936181



4290103249

# Split Complementary

Split-complementary colors differ from the complementary color scheme. The scheme consists of three colors, the original color and two neighbors of the complement color.



4290364370



4291936181



4289710025

# Square

The Square scheme is like the rectangle color scheme, but the four colors are evenly spaced on the color wheel.



4291936181



4290299577



4289906384



4291608267

# Rectangle

The Rectangle color scheme consists of four colors that form a rectangle on the color wheel.



4291936181



4291085235



4289906384



4290822610



# Sweetspot

The Sweet Spot groups the original color and five complimentary colors.



4291936181



4294965493



4291933639



4286610297



4278190080



4286611584

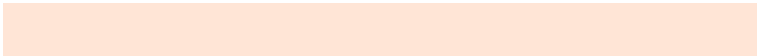


# Same Dimension

The Same Dimension uses a secret algorithm to generate beautiful new colors.



4291936181



4294960598



4291939765



4285096542



4289215488



4280880896

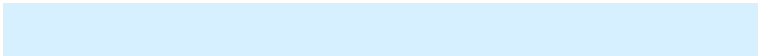


# Inverse Universe

The Inverse Universe completely reimagines the original color for something new.



4290103249



4292276479



4290099665



4284376425



4278217896

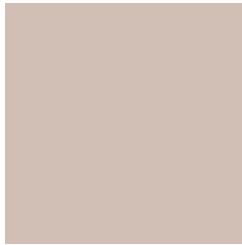


4278196777



# Previews

## White Background



This preview shows how the Android color 4291936181 looks on a white background.

## Color Contrast Check

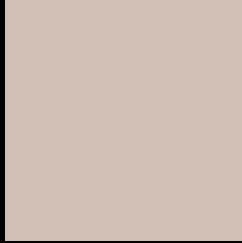
Large Text (above 18pt) WCAG AA × Fail

Any Text WCAG AA × Fail

Large Text (above 18pt) WCAG AAA × Fail

Any Text WCAG AAA × Fail

# Black Background



This preview shows how the Android color 4291936181 looks on a black background.

## Color Contrast Check

Large Text (above 18pt) WCAG AA ✓ Pass

Any Text WCAG AA ✓ Pass

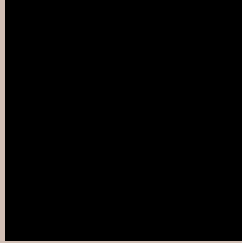
Large Text (above 18pt) WCAG AAA ✓ Pass

Any Text WCAG AAA ✓ Pass

If you want to check with other color combinations, try the [Color Contrast Checker](#).



# Android 4291936181 Background



This preview shows how black text looks on a background with the Android color 4291936181.




This preview shows how white text looks on a background with the Android color 4291936181.

# Color Blindness Simulation

Color vision deficiency is a very complex topic, and I could not describe the different causes any better than Wikipedia does, so if you want to learn more, you should check out their [article about color blindness](#).

## Dichromacy





**Tritanopia**  
4292132042

# Trichromacy



**Original Color**  
4291936181

**Protanomaly**  
4291609014

**Deuteranomaly**  
4292328886

**Tritanomaly**  
4292066754

# Monochromacy



**Original Color**  
4291936181

**Achromatopsia**  
4291019715

**Achromatomaly**  
4291347134

# CSS Examples

## Text

The CSS property to change the color of the text to Android 4291936181 is called "color". The color property can be set on classes, ids or directly on the HTML element.

This example shows how text in the color rgb(209, 191, 181) looks like.

```
.text, #text, p{  
    color:rgb(209, 191, 181)  
}
```

If you want to add a text shadow in that color use the text-shadow property, you can generate a text shadow directly with our [CSS Text Shadow Generator](#).

Here you see how black text with a 4 pixel rgb(209, 191, 181) colored shadow looks like.

```
.shadow{ text-shadow: 4px 4px 2px rgb(209, 191, 181) }
```

## Border

The CSS property to change the border of an element to Android 4291936181 is called "border". The border property can be set on classes, ids or directly on the HTML element.

This example shows the color as border, it can be applied via the CSS property "border" or "border-color".

```
.border, #border, table{ border:4px solid rgb(209, 191, 181) }
```

If only the border color should be changed use the property `border-color`.

```
.border{ border-color:rgb(209, 191, 181) }
```

If you want to add a box shadow in that color use:

Here you see how a box with a 4 pixel `rgb(209, 191, 181)` colored shadow looks like.

```
.boxshadow{ -moz-box-shadow:4px 4px 4px  
4px rgb(209, 191, 181); -webkit-box-  
shadow:4px 4px 4px 4px rgb(209, 191, 181);  
box-shadow:4px 4px 4px 4px rgb(209, 191,  
181) }
```

# Background

The CSS property to change the background color of an element to Android 4291936181 is called "background". The background property can be set on classes, ids or directly on the HTML element.

```
.background, #background, body{  
background: rgb(209, 191, 181) }
```

If only the background color should be changed can be used:

```
.background{ background-color: rgb(209,  
191, 181) }
```

This example shows the color as background, it is applied via the CSS property "background".

To optimize and compress your CSS code, you can use our [online CSS compressor and optimizer](#) based on csstidy. If you want to create a linear or radial gradient as background or border, check our [CSS Gradient Generator](#).



Hey! You found this booklet interesting? Support Converting Colors with the new Membership Option!

The pro membership hides all ads, plus gives you double the colors in the color bucket, and more awesome pro features!

**[Learn more, Memberships starting at \\$2.50/m!](#)**

**Follow me  
on Twitter!**

@ConvertingColor