

Converting Colors

Android(4291936707)

Have a look what the booklet for
Android(4291936707) contains.

Android(4291936707)	3
<i>Conversions</i>	4
<i>Details</i>	6
<i>Harmonies</i>	11
<i>Previews</i>	23
<i>Color Blindness Simulation</i>	26
<i>CSS Examples</i>	29

Color

Android(4291936707)

Conversions

Conversions Part 1

Format	Color
Hex	D1C1C3
RGB	209, 193, 195
RGB Percent	82%, 76%, 76%
CMY	0.1804, 0.2431, 0.2353
CMYK	0.00, 0.08, 0.07, 0.18
HSL	352°, 15%, 79%
HSV	352°, 8%, 82%
XYZ	55.2148, 55.6354, 59.4583
YIQ	198.0120, 8.8940, 4.0140

Conversions

Conversions Part 2

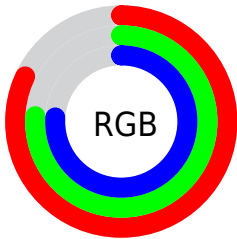
Format	Color
RYB	209, 193, 195
Decimal	13746627
CIELab	79.41, 5.97, 1.02
CIElCh	79, 6.052, 9.695
Yxy	55.6354, 0.3242, 0.3267
Android (android.graphics.Color)	4291936707 (0xFFD1C1C3)
YUV	198.0120, -1.4849, 9.6365
Hunter-Lab	74.5891, 1.6041, 4.9497

Details

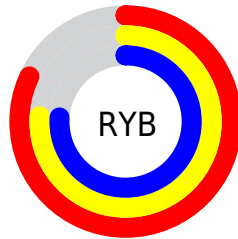
The Android color `4291936707` is a light color, and the websafe version is hex `CCCCCC`. A complement of this color would be `4290892239`, and the grayscale version is `4291217094`.

A 20% lighter version of the original color is `4294965756`, and `4288384141` is the 20% darker color. If you saturate the color by 10%, you get `4291931313`, and if you desaturate by 10%, it is `4291942101`.

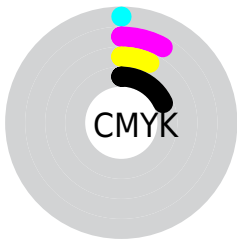
Distribution



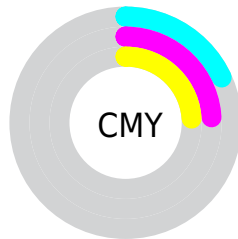
- Red (82%)
- Green (76%)
- Blue (76%)



- Red (82%)
- Yellow (76%)
- Blue (76%)



- Cyan (0%)
- Magenta (8%)
- Yellow (7%)
- Black (18%)




- Cyan (18%)
- Magenta (24%)
- Yellow (24%)

Brightness & Saturation Gradients

These gradients show how the Android color 4291936707 changes by changing the brightness by 10 percent. The first figure shows a shift by +10% for each color and the second figure -10%.

Similar to the brightness gradients but the following saturation gradients show a change of the Android color 4291936707 by changing the saturation by 10% instead.

 4291936707

 4291936707

4294967295

 4290094760

 4294965756

 4288384141

 4286607988

 4284963419

 4283384388

 4281871406

 4280489753

 4278779904

 4278190080


 4291936707

 4291936707

 4291931313

 4291942101

 4291925918

 4291947496

 4291920524

 4291952634

 4291915130

 4291952639

 4291909992

 4291904597

 4291899203

 4291893809

 4291888414

Harmonies

Analogous

The Analogous color harmony consists of three colors that are next to each other on the color wheel.



4291740105



4291936707



4291936958

Triad

The Triadic color harmony groups three colors that are evenly spaced from another and form a triangle on the color wheel.



4291936707



4290889660



4290496207

Complementary

The Complementary color scheme is a pair of colors which are on the opposite of each other on the color wheel.



4291936707



4290892239

Split Complementary

Split-complementary colors differ from the complementary color scheme. The scheme consists of three colors, the original color and two neighbors of the complement color.



4290300108



4291936707



4290496705

Square

The Square scheme is like the rectangle color scheme, but the four colors are evenly spaced on the color wheel.



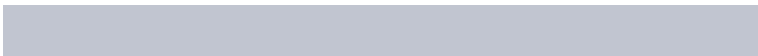
4291936707



4291347898



4290300102



4290889168

Rectangle

The Rectangle color scheme consists of four colors that form a rectangle on the color wheel.



4291936707



4291805883



4290300102



4290430926

Sweetspot

The Sweet Spot groups the original color and five complimentary colors.



4291936707



4294966011



4291805649



4286610813



4278190080



4286611584

Same Dimension

The Same Dimension uses a secret algorithm to generate beautiful new colors.



4291936707



4294961387



4291938241



4285095519



4289200149



4280877061

Inverse Universe

The Inverse Universe completely reimagines the original color for something new.



4291936707



4294961387



4290890705



4285095519



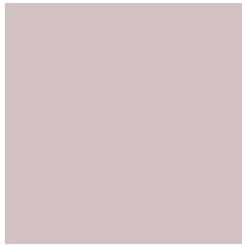
4289200149



4280877061

Previews

White Background



This preview shows how the Android color 4291936707 looks on a white background.

Color Contrast Check

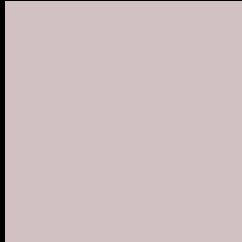
Large Text (above 18pt) WCAG AA × Fail

Any Text WCAG AA × Fail

Large Text (above 18pt) WCAG AAA × Fail

Any Text WCAG AAA × Fail

Black Background



This preview shows how the Android color 4291936707 looks on a black background.

Color Contrast Check

Large Text (above 18pt) WCAG AA ✓ Pass

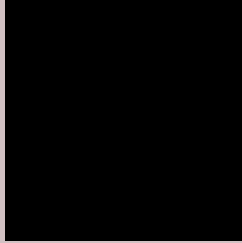
Any Text WCAG AA ✓ Pass

Large Text (above 18pt) WCAG AAA ✓ Pass

Any Text WCAG AAA ✓ Pass

If you want to check with other color combinations, try the [Color Contrast Checker](#).

Android 4291936707 Background



This preview shows how black text looks on a background with the Android color 4291936707.



This preview shows how white text looks on a background with the Android color 4291936707.

Color Blindness Simulation

Color vision deficiency is a very complex topic, and I could not describe the different causes any better than Wikipedia does, so if you want to learn more, you should check out their [article about color blindness](#).

Dichromacy



Original Color
4291936707

Protanopia
4291347653

Deuteranopia
4292394692



Tritanopia
4292067278

Trichromacy



Original Color
4291936707

Protanomaly
4291544004

Deuteranomaly
4292198340

Tritanomaly
4292001994

Monochromacy



Original Color
4291936707

Achromatopsia
4291217094

Achromatomaly
4291478725

CSS Examples

Text

The CSS property to change the color of the text to Android 4291936707 is called "color". The color property can be set on classes, ids or directly on the HTML element.

This example shows how text in the color `rgb(209, 193, 195)` looks like.

```
.text, #text, p{  
    color:rgb(209, 193, 195)  
}
```

If you want to add a text shadow in that color use the text-shadow property, you can generate a text shadow directly with our [CSS Text Shadow Generator](#).

Here you see how black text with a 4 pixel rgb(209, 193, 195) colored shadow looks like.

```
.shadow{ text-shadow: 4px 4px 2px rgb(209, 193, 195) }
```

Border

The CSS property to change the border of an element to Android 4291936707 is called "border". The border property can be set on classes, ids or directly on the HTML element.

This example shows the color as border, it can be applied via the CSS property "border" or "border-color".

```
.border, #border, table{ border:4px solid rgb(209, 193, 195) }
```

If only the border color should be changed use the property `border-color`.

```
.border{ border-color:rgb(209, 193, 195) }
```

If you want to add a box shadow in that color use:

Here you see how a box with a 4 pixel `rgb(209, 193, 195)` colored shadow looks like.

```
.boxshadow{ -moz-box-shadow:4px 4px 4px  
4px rgb(209, 193, 195); -webkit-box-  
shadow:4px 4px 4px 4px rgb(209, 193, 195);  
box-shadow:4px 4px 4px 4px rgb(209, 193,  
195) }
```

Background

The CSS property to change the background color of an element to Android 4291936707 is called "background". The background property can be set on classes, ids or directly on the HTML element.

```
.background, #background, body{  
background: rgb(209, 193, 195) }
```

If only the background color should be changed can be used:

```
.background{ background-color: rgb(209,  
193, 195) }
```

This example shows the color as background, it is applied via the CSS property "background".

To optimize and compress your CSS code, you can use our [online CSS compressor and optimizer](#) based on csstidy. If you want to create a linear or radial gradient as background or border, check our [CSS Gradient Generator](#).

Hey! You found this booklet interesting? Support Converting Colors with the new Membership Option!

The pro membership hides all ads, plus gives you double the colors in the color bucket, and more awesome pro features!

[Learn more, Memberships starting at \\$2.50/m!](#)

**Follow me
on Twitter!**

@ConvertingColor