

Converting Colors

Android(4291990931)

Have a look what the booklet for
Android(4291990931) contains.

Android(4291990931)	3
<i>Conversions</i>	4
<i>Details</i>	6
<i>Harmonies</i>	11
<i>Previews</i>	23
<i>Color Blindness Simulation</i>	26
<i>CSS Examples</i>	29

Color

Android(4291990931)

Conversions

Conversions Part 1

Format	Color
Hex	D29593
RGB	210, 149, 147
RGB Percent	82%, 58%, 58%
CMY	0.1765, 0.4157, 0.4235
CMYK	0.00, 0.29, 0.30, 0.18
HSL	2°, 41%, 70%
HSV	2°, 30%, 82%
XYZ	42.5922, 37.3031, 32.5591
YIQ	167.0110, 36.9980, 12.3100

Conversions

Conversions Part 2

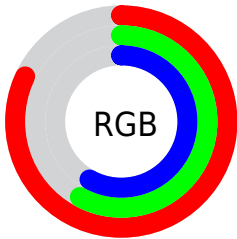
Format	Color
R _Y B	210, 149, 147
Decimal	13800851
CIE Lab	67.50, 22.69, 10.23
CIE LCh	68, 24.889, 24.270
Yxy	37.3031, 0.3788, 0.3317
Android (android.graphics.Color)	4291990931 (0xFFD29593)
YUV	167.0110, -9.8654, 37.7014
Hunter-Lab	61.0763, 17.5956, 11.1465

Details

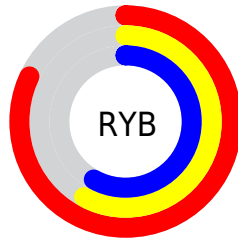
The Android color `4291990931` is a light color, and the websafe version is hex `CC9999`. A complement of this color would be `4287877330`, and the grayscale version is `4289177511`.

A 20% lighter version of the original color is `4294953929`, and `4288307808` is the 20% darker color. If you saturate the color by 10%, you get `4291985790`, and if you desaturate by 10%, it is `4291996072`.

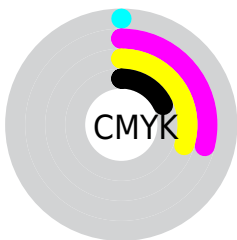
Distribution



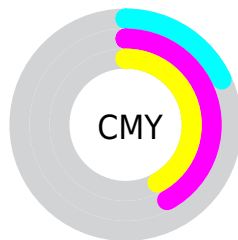
- Red (82%)
- Green (58%)
- Blue (58%)



- Red (82%)
- Yellow (58%)
- Blue (58%)



- Cyan (0%)
- Magenta (29%)
- Yellow (30%)
- Black (18%)



- Cyan (18%)
- Magenta (42%)
- Yellow (42%)

Brightness & Saturation Gradients

These gradients show how the Android color 4291990931 changes by changing the brightness by 10 percent. The first figure shows a shift by +10% for each color and the second figure -10%.

Similar to the brightness gradients but the following saturation gradients show a change of the Android color 4291990931 by changing the saturation by 10% instead.

 4291990931

 4291990931

4294967295

 4290149241

 4294953929

 4288307808

 4294961381

 4286531913

 4284822066

 4283112477

 4281533700


 4279828481

 4278190080

 4291990931

 4291990931

 4291985790

 4291996072

 4291980393

 4292001469

 4291975252

 4292006610

 4291970111

 4292011751

 4291964714

 4292017148

 4291959573

 4292018175

 4291954432

Harmonies

Analogous

The Analogous color harmony consists of three colors that are next to each other on the color wheel.



4291728554



4291990931



4291467905

Triad

The Triadic color harmony groups three colors that are evenly spaced from another and form a triangle on the color wheel.



4291990931



4287147658



4286818513

Complementary

The Complementary color scheme is a pair of colors which are on the opposite of each other on the color wheel.



4291990931



4287877330

Split Complementary

Split-complementary colors differ from the complementary color scheme. The scheme consists of three colors, the original color and two neighbors of the complement color.



4285116104



4291990931



4285575583

Square

The Square scheme is like the rectangle color scheme, but the four colors are evenly spaced on the color wheel.



4291990931



4288850299



4284658102



4288848077

Rectangle

The Rectangle color scheme consists of four colors that form a rectangle on the color wheel.



4291990931



4290813818



4284658102



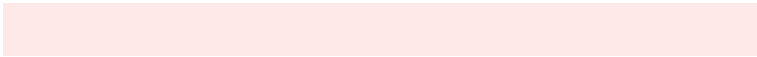
4286163663

Sweetspot

The Sweet Spot groups the original color and five complimentary colors.



4291990931



4294961640



4291990481



4286607985



4278190080



4286611584

Same Dimension

The Same Dimension uses a secret algorithm to generate beautiful new colors.



4291990931



4294944419



4291998867



4285095518



4289201408



4280877312

Inverse Universe

The Inverse Universe completely reimagines the original color for something new.



4287877330



4288937215



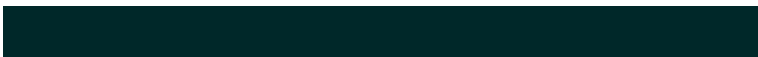
4287869394



4284377193



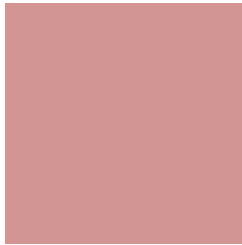
4278231976



4278200361

Previews

White Background



This preview shows how the Android color 4291990931 looks on a white background.

Color Contrast Check

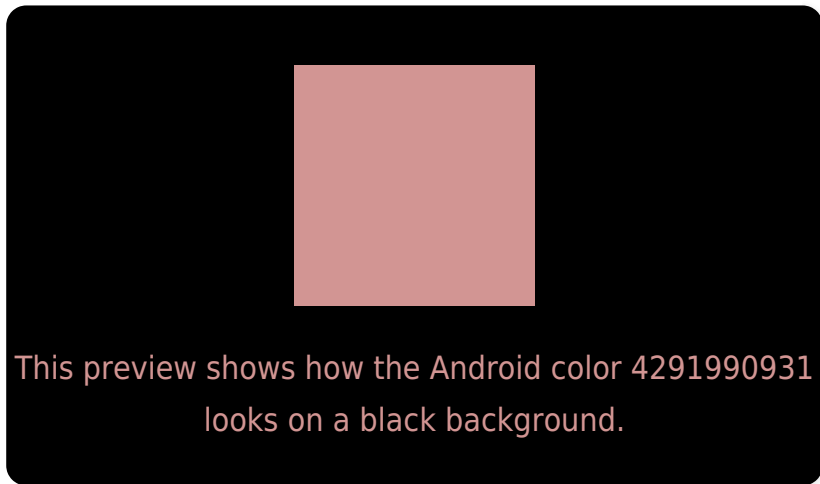
Large Text (above 18pt) WCAG AA × Fail

Any Text WCAG AA × Fail

Large Text (above 18pt) WCAG AAA × Fail

Any Text WCAG AAA × Fail

Black Background



Color Contrast Check

Large Text (above 18pt) WCAG AA ✓ Pass

Any Text WCAG AA ✓ Pass

Large Text (above 18pt) WCAG AAA ✓ Pass

Any Text WCAG AAA ✓ Pass

If you want to check with other color combinations, try the [Color Contrast Checker](#).

Android 4291990931 Background



This preview shows how black text looks on a background with the Android color 4291990931.



This preview shows how white text looks on a background with the Android color 4291990931.

Color Blindness Simulation

Color vision deficiency is a very complex topic, and I could not describe the different causes any better than Wikipedia does, so if you want to learn more, you should check out their [article about color blindness](#).

Dichromacy



Trichromacy



Original Color
4291990931

Protanomaly
4290355096

Deuteranomaly
4291074962

Tritanomaly
4292056218

Monochromacy



Original Color
4291990931

Achromatopsia
4289177511

Achromatomaly
4290224288

CSS Examples

Text

The CSS property to change the color of the text to Android 4291990931 is called "color". The color property can be set on classes, ids or directly on the HTML element.

This example shows how text in the color `rgb(210, 149, 147)` looks like.

```
.text, #text, p{  
    color:rgb(210, 149, 147)  
}
```

If you want to add a text shadow in that color use the text-shadow property, you can generate a text shadow directly with our [CSS Text Shadow Generator](#).

Here you see how black text with a 4 pixel rgb(210, 149, 147) colored shadow looks like.

```
.shadow{ text-shadow: 4px 4px 2px rgb(210, 149, 147) }
```

Border

The CSS property to change the border of an element to Android 4291990931 is called "border". The border property can be set on classes, ids or directly on the HTML element.

This example shows the color as border, it can be applied via the CSS property "border" or "border-color".

```
.border, #border, table{ border:4px solid rgb(210, 149, 147) }
```

If only the border color should be changed use the property `border-color`.

```
.border{ border-color:rgb(210, 149, 147) }
```

If you want to add a box shadow in that color use:

Here you see how a box with a 4 pixel `rgb(210, 149, 147)` colored shadow looks like.

```
.boxshadow{ -moz-box-shadow:4px 4px 4px  
4px rgb(210, 149, 147); -webkit-box-  
shadow:4px 4px 4px 4px rgb(210, 149, 147);  
box-shadow:4px 4px 4px 4px rgb(210, 149,  
147) }
```

Background

The CSS property to change the background color of an element to Android 4291990931 is called "background". The background property can be set on classes, ids or directly on the HTML element.

```
.background, #background, body{  
background: rgb(210, 149, 147) }
```

If only the background color should be changed can be used:

```
.background{ background-color: rgb(210,  
149, 147) }
```

This example shows the color as background, it is applied via the CSS property "background".

To optimize and compress your CSS code, you can use our [online CSS compressor and optimizer](#) based on csstidy. If you want to create a linear or radial gradient as background or border, check our [CSS Gradient Generator](#).

Hey! You found this booklet interesting? Support Converting Colors with the new Membership Option!

The pro membership hides all ads, plus gives you double the colors in the color bucket, and more awesome pro features!

[Learn more, Memberships starting at \\$2.50/m!](#)

**Follow me
on Twitter!**

@ConvertingColor