

# Converting Colors

Android(4291996302)

Have a look what the booklet for  
Android(4291996302) contains.

<b>Android(4291996302)</b> .....	3
<b><i>Conversions</i></b> .....	4
<b><i>Details</i></b> .....	6
<b><i>Harmonies</i></b> .....	11
<b><i>Previews</i></b> .....	23
<b><i>Color Blindness Simulation</i></b> .....	26
<b><i>CSS Examples</i></b> .....	29

# **Color**

**Android(4291996302)**

# Conversions

## Conversions Part 1

Format	Color
Hex	D2AA8E
RGB	210, 170, 142
RGB Percent	82%, 67%, 56%
CMY	0.1765, 0.3333, 0.4431
CMYK	0.00, 0.19, 0.32, 0.18
HSL	25°, 43%, 69%
HSV	25°, 32%, 82%
XYZ	45.8356, 44.4041, 31.7462
YIQ	178.7680, 32.8280, -0.2280

# Conversions

## Conversions Part 2

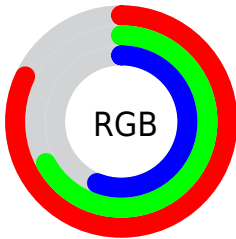
Format	Color
R <sub>Y</sub> B	210, 190, 142
Decimal	13806222
CIE Lab	72.50, 10.64, 19.96
CIE LCh	72, 22.621, 61.945
Yxy	44.4041, 0.3757, 0.3640
Android (android.graphics.Color)	4291996302 (0xFFD2AA8E)
YUV	178.7680, -18.1266, 27.3905
Hunter-Lab	66.6364, 6.1668, 18.3991

# Details

The Android color `4291996302` is a light color, and the websafe version is hex `CC9966`. A complement of this color would be `4287542994`, and the grayscale version is `4289967027`.

A 20% lighter version of the original color is `4294959556`, and `4288312924` is the 20% darker color. If you saturate the color by 10%, you get `4291993209`, and if you desaturate by 10%, it is `4291999395`.

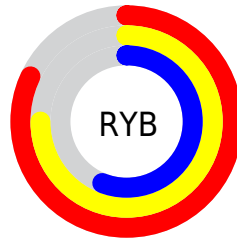
# Distribution



Red (82%)

Green (67%)

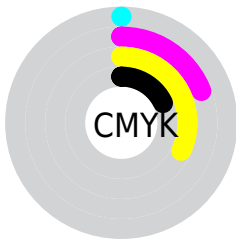
Blue (56%)



Red (82%)

Yellow (75%)

Blue (56%)

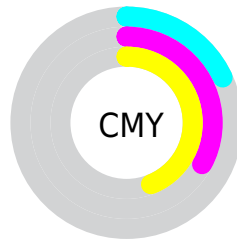


Cyan (0%)

Magenta (19%)

Yellow (32%)

Black (18%)



Cyan (18%)

Magenta (33%)

Yellow (44%)

# Brightness & Saturation Gradients

These gradients show how the Android color 4291996302 changes by changing the brightness by 10 percent. The first figure shows a shift by +10% for each color and the second figure -10%.

Similar to the brightness gradients but the following saturation gradients show a change of the Android color 4291996302 by changing the saturation by 10% instead.





4291996302



4291996302

4294967295



4290154612



4294959556



4288312924



4294967008



4286602564



4294967292



4284827181



4283182872



4281670144



4280156160



4278190080



4291996302



4291996302

 4291993209

 4291999395

 4291989860

 4292002744

 4291986767

 4292005837

 4291983674

 4292008930

 4291980325

 4292012279

 4291977232

 4292015359

 4291974656

 4292018175

# Harmonies

## Analogous

The Analogous color harmony consists of three colors that are next to each other on the color wheel.



4292650397



4291996302



4290818441

# Triad

The Triadic color harmony groups three colors that are evenly spaced from another and form a triangle on the color wheel.



4291996302



4286561970



4290227413

# Complementary

The Complementary color scheme is a pair of colors which are on the opposite of each other on the color wheel.



4291996302



4287542994

# Split Complementary

Split-complementary colors differ from the complementary color scheme. The scheme consists of three colors, the original color and two neighbors of the complement color.



4288394203



4291996302



4286102983

# Square

The Square scheme is like the rectangle color scheme, but the four colors are evenly spaced on the color wheel.



4291996302



4287806622



4286822870



4291733190

# Rectangle

The Rectangle color scheme consists of four colors that form a rectangle on the color wheel.



4291996302



4289836427



4286822870



4289638104

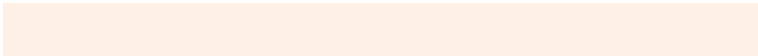


# Sweetspot

The Sweet Spot groups the original color and five complimentary colors.



4291996302



4294963430



4291989175



4286609264



4278190080



4286611584



# Same Dimension

The Same Dimension uses a secret algorithm to generate beautiful new colors.



4291996302



4294952092



4292004750



4285096542



4289217792



4280881408

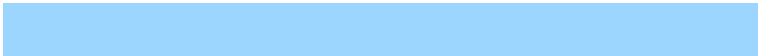


# Inverse Universe

The Inverse Universe completely reimagines the original color for something new.



4287542994



4288468735



4287534546



4284376169



4278215592



4278196265



# Previews

## White Background



This preview shows how the Android color 4291996302 looks on a white background.

## Color Contrast Check

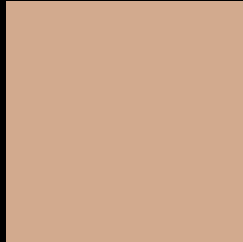
Large Text (above 18pt) WCAG AA × Fail

Any Text WCAG AA × Fail

Large Text (above 18pt) WCAG AAA × Fail

Any Text WCAG AAA × Fail

# Black Background



This preview shows how the Android color 4291996302 looks on a black background.

## Color Contrast Check

Large Text (above 18pt) WCAG AA ✓ Pass

Any Text WCAG AA ✓ Pass

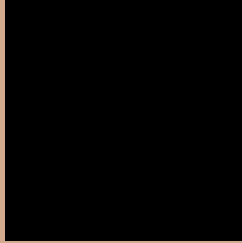
Large Text (above 18pt) WCAG AAA ✓ Pass

Any Text WCAG AAA ✓ Pass

If you want to check with other color combinations, try the [Color Contrast Checker](#).



# Android 4291996302 Background



This preview shows how black text looks on a background with the Android color 4291996302.



This preview shows how white text looks on a background with the Android color 4291996302.

# Color Blindness Simulation

Color vision deficiency is a very complex topic, and I could not describe the different causes any better than Wikipedia does, so if you want to learn more, you should check out their [article about color blindness](#).

## Dichromacy



**Original Color**  
4291996302

**Protanopia**  
4290556562

**Deuteranopia**  
4291865486



# Trichromacy



**Original Color**  
4291996302

**Protanomaly**  
4291080081

**Deuteranomaly**  
4291931022

**Tritanomaly**  
4292192165

# Monochromacy



**Original Color**  
4291996302

**Achromatopsia**  
4289967027

**Achromatomaly**  
4290687142

# CSS Examples

## Text

The CSS property to change the color of the text to Android 4291996302 is called "color". The color property can be set on classes, ids or directly on the HTML element.

This example shows how text in the color `rgb(210, 170, 142)` looks like.

```
.text, #text, p{  
    color:rgb(210, 170, 142)  
}
```

If you want to add a text shadow in that color use the text-shadow property, you can generate a text shadow directly with our [CSS Text Shadow Generator](#).

Here you see how black text with a 4 pixel rgb(210, 170, 142) colored shadow looks like.

```
.shadow{ text-shadow: 4px 4px 2px rgb(210, 170, 142) }
```

## Border

The CSS property to change the border of an element to Android 4291996302 is called "border". The border property can be set on classes, ids or directly on the HTML element.

This example shows the color as border, it can be applied via the CSS property "border" or "border-color".

```
.border, #border, table{ border:4px solid rgb(210, 170, 142) }
```

If only the border color should be changed use the property `border-color`.

```
.border{ border-color:rgb(210, 170, 142) }
```

If you want to add a box shadow in that color use:

Here you see how a box with a 4 pixel `rgb(210, 170, 142)` colored shadow looks like.

```
.boxshadow{ -moz-box-shadow:4px 4px 4px  
4px rgb(210, 170, 142); -webkit-box-  
shadow:4px 4px 4px 4px rgb(210, 170, 142);  
box-shadow:4px 4px 4px 4px rgb(210, 170,  
142) }
```

# Background

The CSS property to change the background color of an element to Android 4291996302 is called "background". The background property can be set on classes, ids or directly on the HTML element.

```
.background, #background, body{  
background: rgb(210, 170, 142) }
```

If only the background color should be changed can be used:

```
.background{ background-color: rgb(210,  
170, 142) }
```

This example shows the color as background, it is applied via the CSS property "background".

To optimize and compress your CSS code, you can use our [online CSS compressor and optimizer](#) based on csstidy. If you want to create a linear or radial gradient as background or border, check our [CSS Gradient Generator](#).



Hey! You found this booklet interesting? Support Converting Colors with the new Membership Option!

The pro membership hides all ads, plus gives you double the colors in the color bucket, and more awesome pro features!

**[Learn more, Memberships starting at \\$2.50/m!](#)**

**Follow me  
on Twitter!**

@ConvertingColor