

Converting Colors

Android(4291996323)

Have a look what the booklet for
Android(4291996323) contains.

Android(4291996323)	3
<i>Conversions</i>	4
<i>Details</i>	6
<i>Harmonies</i>	11
<i>Previews</i>	23
<i>Color Blindness Simulation</i>	26
<i>CSS Examples</i>	29

Color

Android(4291996323)

Conversions

Conversions Part 1

Format	Color
Hex	D2AAA3
RGB	210, 170, 163
RGB Percent	82%, 67%, 64%
CMY	0.1765, 0.3333, 0.3608
CMYK	0.00, 0.19, 0.22, 0.18
HSL	9°, 34%, 73%
HSV	9°, 22%, 82%
XYZ	47.5639, 45.0954, 40.8477
YIQ	181.1620, 26.0870, 6.3030

Conversions

Conversions Part 2

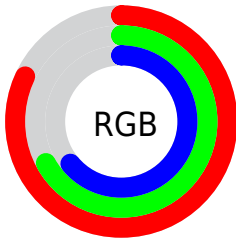
Format	Color
R _Y B	210, 171, 163
Decimal	13806243
CIE Lab	72.95, 13.54, 9.13
CIE LCh	73, 16.326, 33.984
Yxy	45.0954, 0.3563, 0.3378
Android (android.graphics.Color)	4291996323 (0xFFD2AAA3)
YUV	181.1620, -8.9539, 25.2909
Hunter-Lab	67.1531, 8.9119, 10.9424

Details

The Android color `4291996323` is a light color, and the websafe version is hex `CC9999`. A complement of this color would be `4288924626`, and the grayscale version is `4290098613`.

A 20% lighter version of the original color is `4294959578`, and `4288378479` is the 20% darker color. If you saturate the color by 10%, you get `4291991694`, and if you desaturate by 10%, it is `4292000952`.

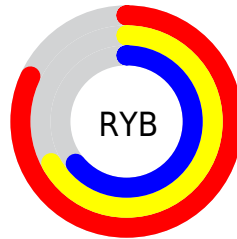
Distribution



Red (82%)

Green (67%)

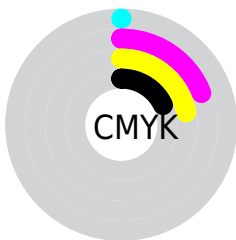
Blue (64%)



Red (82%)

Yellow (67%)

Blue (64%)

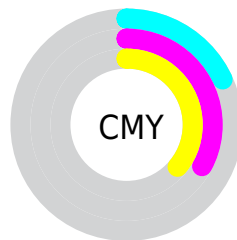


Cyan (0%)

Magenta (19%)

Yellow (22%)

Black (18%)



Cyan (18%)


Magenta (33%)


Yellow (36%)

Brightness & Saturation Gradients

These gradients show how the Android color 4291996323 changes by changing the brightness by 10 percent. The first figure shows a shift by +10% for each color and the second figure -10%.

Similar to the brightness gradients but the following saturation gradients show a change of the Android color 4291996323 by changing the saturation by 10% instead.

 4291996323

 4291996323

4294967295

 4290154377

 4294959578

 4288378479

 4294967030

 4286602583

 4284958016

 4283313962


 4281735701

 4280418304

 4278190080

 4291996323

 4291996323

 4291991694

 4292000952

 4291987065


 4292005581

 4291982436

 4292010210


 4291978063


 4292014583

 4291973434

 4292018175

 4291968805

 4291964176

 4291960576

Harmonies

Analogous

The Analogous color harmony consists of three colors that are next to each other on the color wheel.



4291930546



4291996323



4291538585

Triad

The Triadic color harmony groups three colors that are evenly spaced from another and form a triangle on the color wheel.



4291996323



4288461734



4289049809

Complementary

The Complementary color scheme is a pair of colors which are on the opposite of each other on the color wheel.



4291996323



4288924626

Split Complementary

Split-complementary colors differ from the complementary color scheme. The scheme consists of three colors, the original color and two neighbors of the complement color.



4287936717



4291996323



4287610037

Square

The Square scheme is like the rectangle color scheme, but the four colors are evenly spaced on the color wheel.



4291996323



4289509274



4287413187



4290293708

Rectangle

The Rectangle color scheme consists of four colors that form a rectangle on the color wheel.



4291996323



4290949526



4287413187



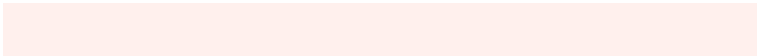
4288656848

Sweetspot

The Sweet Spot groups the original color and five complimentary colors.



4291996323



4294963437



4291994572



4286609269



4278190080



4286611584

Same Dimension

The Same Dimension uses a secret algorithm to generate beautiful new colors.



4291996323



4294952122



4292002211



4285096030



4289206528



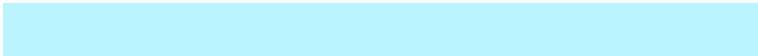
4280878592

Inverse Universe

The Inverse Universe completely reimagines the original color for something new.



4288924626



4290442751



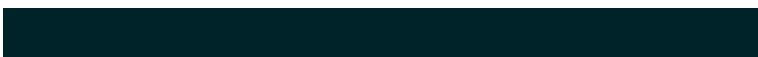
4288918738



4284376937



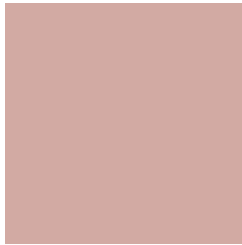
4278226856



4278199081

Previews

White Background



This preview shows how the Android color 4291996323 looks on a white background.

Color Contrast Check

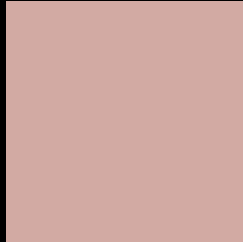
Large Text (above 18pt) WCAG AA × Fail

Any Text WCAG AA × Fail

Large Text (above 18pt) WCAG AAA × Fail

Any Text WCAG AAA × Fail

Black Background



This preview shows how the Android color 4291996323 looks on a black background.

Color Contrast Check

Large Text (above 18pt) WCAG AA ✓ Pass

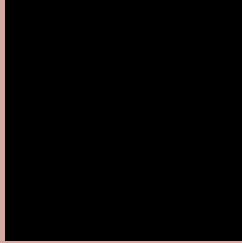
Any Text WCAG AA ✓ Pass

Large Text (above 18pt) WCAG AAA ✓ Pass

Any Text WCAG AAA ✓ Pass

If you want to check with other color combinations, try the [Color Contrast Checker](#).

Android 4291996323 Background



This preview shows how black text looks on a background with the Android color 4291996323.



This preview shows how white text looks on a background with the Android color 4291996323.

Color Blindness Simulation

Color vision deficiency is a very complex topic, and I could not describe the different causes any better than Wikipedia does, so if you want to learn more, you should check out their [article about color blindness](#).

Dichromacy



Original Color
4291996323

Protanopia
4290360232

Deuteranopia
4291538338



Tritanopia
4292126644

Trichromacy



Original Color
4291996323

Protanomaly
4290949286

Deuteranomaly
4291734690

Tritanomaly
4292061358

Monochromacy



Original Color
4291996323

Achromatopsia
4290098613

Achromatomaly
4290818478

CSS Examples

Text

The CSS property to change the color of the text to Android 4291996323 is called "color". The color property can be set on classes, ids or directly on the HTML element.

This example shows how text in the color `rgb(210, 170, 163)` looks like.

```
.text, #text, p{  
    color:rgb(210, 170, 163)  
}
```

If you want to add a text shadow in that color use the text-shadow property, you can generate a text shadow directly with our [CSS Text Shadow Generator](#).

Here you see how black text with a 4 pixel rgb(210, 170, 163) colored shadow looks like.

```
.shadow{ text-shadow: 4px 4px 2px rgb(210, 170, 163) }
```

Border

The CSS property to change the border of an element to Android 4291996323 is called "border". The border property can be set on classes, ids or directly on the HTML element.

This example shows the color as border, it can be applied via the CSS property "border" or "border-color".

```
.border, #border, table{ border:4px solid rgb(210, 170, 163) }
```

If only the border color should be changed use the property `border-color`.

```
.border{ border-color:rgb(210, 170, 163) }
```

If you want to add a box shadow in that color use:

Here you see how a box with a 4 pixel `rgb(210, 170, 163)` colored shadow looks like.

```
.boxshadow{ -moz-box-shadow:4px 4px 4px  
4px rgb(210, 170, 163); -webkit-box-  
shadow:4px 4px 4px 4px rgb(210, 170, 163);  
box-shadow:4px 4px 4px 4px rgb(210, 170,  
163) }
```

Background

The CSS property to change the background color of an element to Android 4291996323 is called "background". The background property can be set on classes, ids or directly on the HTML element.

```
.background, #background, body{  
background: rgb(210, 170, 163) }
```

If only the background color should be changed can be used:

```
.background{ background-color: rgb(210,  
170, 163) }
```

This example shows the color as background, it is applied via the CSS property "background".

To optimize and compress your CSS code, you can use our [online CSS compressor and optimizer](#) based on csstidy. If you want to create a linear or radial gradient as background or border, check our [CSS Gradient Generator](#).

Hey! You found this booklet interesting? Support Converting Colors with the new Membership Option!

The pro membership hides all ads, plus gives you double the colors in the color bucket, and more awesome pro features!

[Learn more, Memberships starting at \\$2.50/m!](#)

**Follow me
on Twitter!**

@ConvertingColor