

# Converting Colors

Android(4292001980)

Have a look what the booklet for  
Android(4292001980) contains.

<b>Android(4292001980)</b> .....	3
<i><b>Conversions</b></i> .....	4
<i><b>Details</b></i> .....	6
<i><b>Harmonies</b></i> .....	11
<i><b>Previews</b></i> .....	23
<i><b>Color Blindness Simulation</b></i> .....	26
<i><b>CSS Examples</b></i> .....	29

# **Color**

**Android(4292001980)**

# Conversions

## Conversions Part 1

Format	Color
Hex	D2C0BC
RGB	210, 192, 188
RGB Percent	82%, 75%, 74%
CMY	0.1765, 0.2471, 0.2627
CMYK	0.00, 0.09, 0.10, 0.18
HSL	11°, 20%, 78%
HSV	11°, 10%, 82%
XYZ	54.5051, 55.0318, 55.3264
YIQ	196.9260, 12.0120, 2.5720

# Conversions

## Conversions Part 2

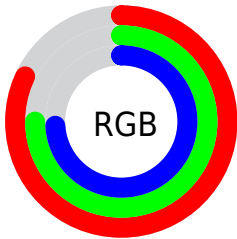
<b>Format</b>	<b>Color</b>
R <sub>Y</sub> B	210, 193, 188
Decimal	13811900
CIE Lab	79.06, 5.66, 4.30
CIE LCh	79, 7.111, 37.209
Yxy	55.0318, 0.3306, 0.3338
Android (android.graphics.Color)	4292001980 (0xFFD2C0BC)
YUV	196.9260, -4.4005, 11.4659
Hunter-Lab	74.1834, 1.3291, 7.7095

# Details

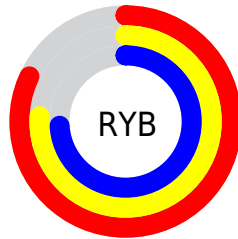
The Android color `4292001980` is a light color, and the websafe version is hex `CCCCCC`. A complement of this color would be `4290563794`, and the grayscale version is `4291151301`.

A 20% lighter version of the original color is `4294965492`, and `4288383879` is the 20% darker color. If you saturate the color by 10%, you get `4291997607`, and if you desaturate by 10%, it is `4292006353`.

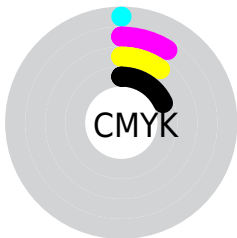
# Distribution



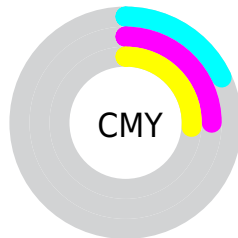
- Red (82%)
- Green (75%)
- Blue (74%)



- Red (82%)
- Yellow (76%)
- Blue (74%)



- Cyan (0%)
- Magenta (9%)
- Yellow (10%)
- Black (18%)



- Cyan (18%)
- Magenta (25%)
- Yellow (26%)

# Brightness & Saturation Gradients

These gradients show how the Android color 4292001980 changes by changing the brightness by 10 percent. The first figure shows a shift by +10% for each color and the second figure -10%.

Similar to the brightness gradients but the following saturation gradients show a change of the Android color 4292001980 by changing the saturation by 10% instead.



 4292001980

 4292001980

4294967295

 4290160033

 4294965492

 4288383879

 4286673262

 4285028693

 4283449662

 4281936680

 4280489748

 4278452224

 4278190080

 4292001980

 4292001980

 4291997607

 4292006353

 4291993234

 4292010726

 4291988605

 4292015355

 4291984232

 4292018175

 4291979859

 4291975486

 4291971113

 4291966740

 4291962368

# Harmonies

## Analogous

The Analogous color harmony consists of three colors that are next to each other on the color wheel.



4292001730



4292001980



4291740344

# Triad

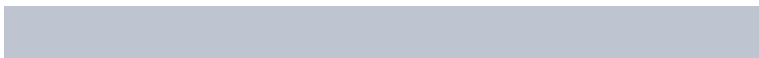
The Triadic color harmony groups three colors that are evenly spaced from another and form a triangle on the color wheel.



4292001980



4290365374



4290757841

# Complementary

The Complementary color scheme is a pair of colors which are on the opposite of each other on the color wheel.



4292001980



4290563794

# Split Complementary

Split-complementary colors differ from the complementary color scheme. The scheme consists of three colors, the original color and two neighbors of the complement color.



4290299600



4292001980



4290103493

# Square

The Square scheme is like the rectangle color scheme, but the four colors are evenly spaced on the color wheel.



4292001980



4290823865



4290037707



4291281614

# Rectangle

The Rectangle color scheme consists of four colors that form a rectangle on the color wheel.



4292001980



4291478455



4290037707



4290561233



# Sweetspot

The Sweet Spot groups the original color and five complimentary colors.



4292001980



4294965751



4292000974



4286610298



4278190080



4286611584

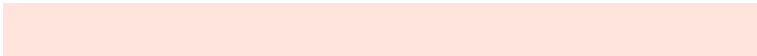


# Same Dimension

The Same Dimension uses a secret algorithm to generate beautiful new colors.



4292001980



4294960350



4292004796



4285096030



4289208064



4280878848

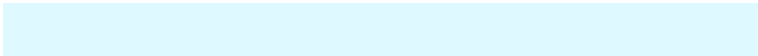


# Inverse Universe

The Inverse Universe completely reimagines the original color for something new.



4290563794



4292803071



4290560978



4284376937



4278225576

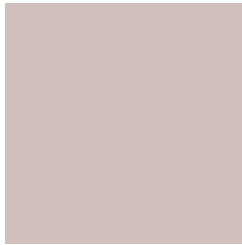


4278198569



# Previews

## White Background



This preview shows how the Android color 4292001980 looks on a white background.

## Color Contrast Check

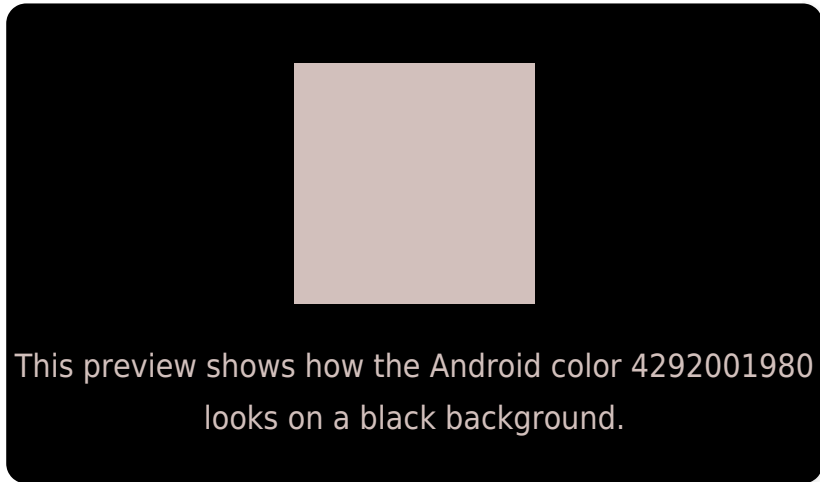
Large Text (above 18pt) WCAG AA × Fail

Any Text WCAG AA × Fail

Large Text (above 18pt) WCAG AAA × Fail

Any Text WCAG AAA × Fail

# Black Background



## Color Contrast Check

Large Text (above 18pt) WCAG AA ✓ Pass

Any Text WCAG AA ✓ Pass

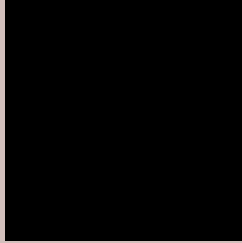
Large Text (above 18pt) WCAG AAA ✓ Pass

Any Text WCAG AAA ✓ Pass

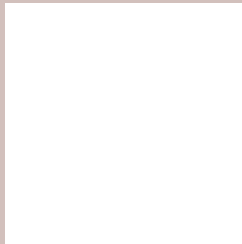
If you want to check with other color combinations, try the [Color Contrast Checker](#).



# Android 4292001980 Background



This preview shows how black text looks on a background with the Android color 4292001980.



This preview shows how white text looks on a background with the Android color 4292001980.

# Color Blindness Simulation

Color vision deficiency is a very complex topic, and I could not describe the different causes any better than Wikipedia does, so if you want to learn more, you should check out their [article about color blindness](#).


## Dichromacy



**Original Color**  
4292001980

**Protanopia**  
4291412926

**Deuteranopia**  
4292459965



**Tritanopia**  
4292132300

# Trichromacy



**Original Color**  
4292001980

**Protanomaly**  
4291609277

**Deuteranomaly**  
4292263613

**Tritanomaly**  
4292067014

# Monochromacy



**Original Color**  
4292001980

**Achromatopsia**  
4291151301

**Achromatomaly**  
4291478466

# CSS Examples

## Text

The CSS property to change the color of the text to Android 4292001980 is called "color". The color property can be set on classes, ids or directly on the HTML element.

This example shows how text in the color `rgb(210, 192, 188)` looks like.

```
.text, #text, p{  
    color:rgb(210, 192, 188)  
}
```

If you want to add a text shadow in that color use the text-shadow property, you can generate a text shadow directly with our [CSS Text Shadow Generator](#).

Here you see how black text with a 4 pixel rgb(210, 192, 188) colored shadow looks like.

```
.shadow{ text-shadow: 4px 4px 2px rgb(210, 192, 188) }
```

## Border

The CSS property to change the border of an element to Android 4292001980 is called "border". The border property can be set on classes, ids or directly on the HTML element.

This example shows the color as border, it can be applied via the CSS property "border" or "border-color".

```
.border, #border, table{ border:4px solid rgb(210, 192, 188) }
```

If only the border color should be changed use the property `border-color`.

```
.border{ border-color:rgb(210, 192, 188) }
```

If you want to add a box shadow in that color use:

Here you see how a box with a 4 pixel `rgb(210, 192, 188)` colored shadow looks like.

```
.boxshadow{ -moz-box-shadow:4px 4px 4px  
4px rgb(210, 192, 188); -webkit-box-  
shadow:4px 4px 4px 4px rgb(210, 192, 188);  
box-shadow:4px 4px 4px 4px rgb(210, 192,  
188) }
```

# Background

The CSS property to change the background color of an element to Android 4292001980 is called "background". The background property can be set on classes, ids or directly on the HTML element.

```
.background, #background, body{  
background: rgb(210, 192, 188) }
```

If only the background color should be changed can be used:

```
.background{ background-color: rgb(210,  
192, 188) }
```

This example shows the color as background, it is applied via the CSS property "background".

To optimize and compress your CSS code, you can use our [online CSS compressor and optimizer](#) based on csstidy. If you want to create a linear or radial gradient as background or border, check our [CSS Gradient Generator](#).



Hey! You found this booklet interesting? Support Converting Colors with the new Membership Option!

The pro membership hides all ads, plus gives you double the colors in the color bucket, and more awesome pro features!

**[Learn more, Memberships starting at \\$2.50/m!](#)**

**Follow me  
on Twitter!**

@ConvertingColor