

# Converting Colors

Android(4292038526)

Have a look what the booklet for  
Android(4292038526) contains.

<b>Android(4292038526)</b> .....	3
<i><b>Conversions</b></i> .....	4
<i><b>Details</b></i> .....	6
<i><b>Harmonies</b></i> .....	11
<i><b>Previews</b></i> .....	23
<i><b>Color Blindness Simulation</b></i> .....	26
<i><b>CSS Examples</b></i> .....	29

**Color**

**Android(4292038526)**

# Conversions

## Conversions Part 1

<b>Format</b>	<b>Color</b>
Hex	D34F7E
RGB	211, 79, 126
RGB Percent	83%, 31%, 49%
CMY	0.1725, 0.6902, 0.5059
CMYK	0.00, 0.63, 0.40, 0.17
HSL	339°, 60%, 57%
HSV	339°, 63%, 83%
XYZ	33.4258, 20.9472, 22.0201
YIQ	123.8260, 63.5850, 42.6010

# Conversions

## Conversions Part 2

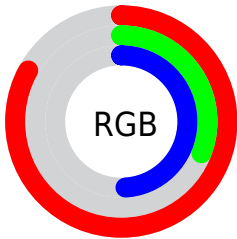
<b>Format</b>	<b>Color</b>
<b>R<sub>YB</sub></b>	211, 79, 126
Decimal	13848446
CIE <sub>Lab</sub>	52.89, 55.98, 1.38
CIE <sub>LCh</sub>	53, 55.997, 1.416
Yxy	20.9472, 0.4376, 0.2742
Android (android.graphics.Color)	4292038526 (0xFFD34F7E)
YUV	123.8260, 1.0718, 76.4516
Hunter-Lab	45.7681, 50.2698, 3.5118

# Details

The Android color **4292038526** is a dark color, and the websafe version is hex **CC3366**. The color can be described as middle muted rose. A complement of this color would be **4283421604**, and the grayscale version is **4286348412**.

A 20% lighter version of the original color is **4294936243**, and **4288154957** is the 20% darker color. If you saturate the color by 10%, you get **4292033136**, and if you desaturate by 10%, it is **4292043916**.

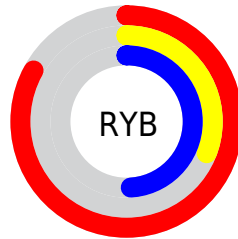
# Distribution



Red (83%)

Green (31%)

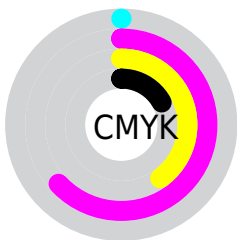
Blue (49%)



Red (83%)

Yellow (31%)

Blue (49%)

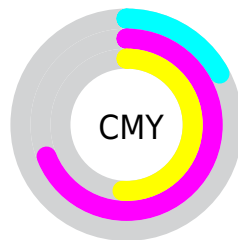


Cyan (0%)

Magenta (63%)

Yellow (40%)

Black (17%)



Cyan (17%)

Magenta (69%)

Yellow (51%)

# Brightness & Saturation Gradients

These gradients show how the Android color 4292038526 changes by changing the brightness by 10 percent. The first figure shows a shift by +10% for each color and the second figure -10%.

Similar to the brightness gradients but the following saturation gradients show a change of the Android color 4292038526 by changing the saturation by 10% instead.





4292038526



4292038526

4294967295



4290064997



4294936243



4288154957



4294943438



4286251063



4294950890



4284416034



4294958335



4282646538



4294965759



4280745985



4278190080



4292038526



4292038526



4292033136



4292043916

 4292027747

 4292049305

 4292022357

 4292054695

 4292018251

 4292060084

 4292065730

 4292071120

 4292076509

 4292081899

 4292083704

# Harmonies

## Analogous

The Analogous color harmony consists of three colors that are next to each other on the color wheel.



4290403245



4292038526



4291909455

# Triad

The Triadic color harmony groups three colors that are evenly spaced from another and form a triangle on the color wheel.



4292038526



4284779043



4278226898

# Complementary

The Complementary color scheme is a pair of colors which are on the opposite of each other on the color wheel.



4292038526



4283421604

# Split Complementary

Split-complementary colors differ from the complementary color scheme. The scheme consists of three colors, the original color and two neighbors of the complement color.



4278228143



4292038526



4278227278

# Square

The Square scheme is like the rectangle color scheme, but the four colors are evenly spaced on the color wheel.



4292038526



4287921420



4278228351



4278223839

# Rectangle

The Rectangle color scheme consists of four colors that form a rectangle on the color wheel.



4292038526



4291060531



4278228351



4278227401



# Sweetspot

The Sweet Spot groups the original color and five complimentary colors.



4292038526



4294954976



4288892883



4286603885



4278190080



4286611584



# Same Dimension

The Same Dimension uses a secret algorithm to generate beautiful new colors.



4292038526



4294918276



4292043087



4285095522



4289200188



4280877071



# Inverse Universe

The Inverse Universe completely reimagines the original color for something new.



4292038526



4294918276



4283417043



4285095522



4289200188



4280877071



# Previews

## White Background



This preview shows how the Android color 4292038526 looks on a white background.

## Color Contrast Check

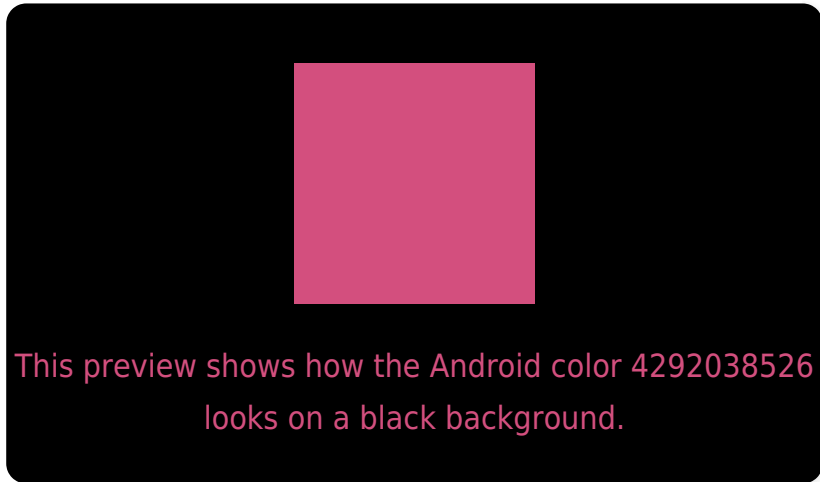
Large Text (above 18pt) WCAG AA ✓ Pass

Any Text WCAG AA ✗ Fail

Large Text (above 18pt) WCAG AAA ✗ Fail

Any Text WCAG AAA ✗ Fail

# Black Background



## Color Contrast Check

Large Text (above 18pt) WCAG AA ✓ Pass

Any Text WCAG AA ✓ Pass

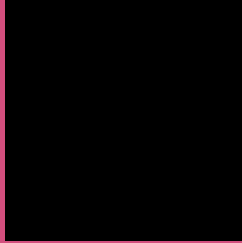
Large Text (above 18pt) WCAG AAA ✓ Pass

Any Text WCAG AAA × Fail

If you want to check with other color combinations, try the [Color Contrast Checker](#).



# Android 4292038526 Background



This preview shows how black text looks on a background with the Android color 4292038526.



This preview shows how white text looks on a background with the Android color 4292038526.

# Color Blindness Simulation

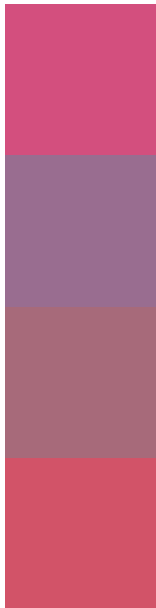
Color vision deficiency is a very complex topic, and I could not describe the different causes any better than Wikipedia does, so if you want to learn more, you should check out their [article about color blindness](#).

## Dichromacy





# Trichromacy



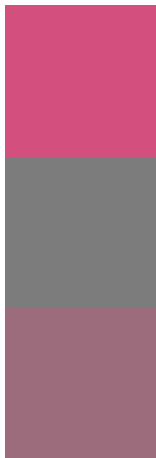
**Original Color**  
4292038526

**Protanomaly**  
4288245136

**Deuteranomaly**  
4289161850

**Tritanomaly**  
4291973992

# Monochromacy



**Original Color**  
4292038526

**Achromatopsia**  
4286348412

**Achromatomaly**  
4288441469

# CSS Examples

## Text

The CSS property to change the color of the text to Android 4292038526 is called "color". The color property can be set on classes, ids or directly on the HTML element.

This example shows how text in the color `rgb(211, 79, 126)` looks like.

```
.text, #text, p{  
    color:rgb(211, 79, 126)  
}
```

If you want to add a text shadow in that color use the text-shadow property, you can generate a text shadow directly with our [CSS Text Shadow Generator](#).

Here you see how black text with a 4 pixel rgb(211, 79, 126) colored shadow looks like.

```
.shadow{ text-shadow: 4px 4px 2px rgb(211, 79, 126) }
```

## Border

The CSS property to change the border of an element to Android 4292038526 is called "border". The border property can be set on classes, ids or directly on the HTML element.

This example shows the color as border, it can be applied via the CSS property "border" or "border-color".

```
.border, #border, table{ border:4px solid rgb(211, 79, 126) }
```

If only the border color should be changed use the property border-color.

```
.border{ border-color:rgb(211, 79, 126) }
```

If you want to add a box shadow in that color use:

Here you see how a box with a 4 pixel rgb(211, 79, 126) colored shadow looks like.

```
.boxshadow{ -moz-box-shadow:4px 4px 4px  
4px rgb(211, 79, 126); -webkit-box-  
shadow:4px 4px 4px 4px rgb(211, 79, 126);  
box-shadow:4px 4px 4px 4px rgb(211, 79,  
126) }
```

# Background

The CSS property to change the background color of an element to Android 4292038526 is called "background". The background property can be set on classes, ids or directly on the HTML element.

```
.background, #background, body{  
background: rgb(211, 79, 126) }
```

If only the background color should be changed can be used:

```
.background{ background-color: rgb(211, 79,  
126) }
```

This example shows the color as background, it is applied via the CSS property "background".

To optimize and compress your CSS code, you can use our [online CSS compressor and optimizer](#) based on csstidy. If you want to create a linear or radial gradient as background or border, check our [CSS Gradient Generator](#).



Hey! You found this booklet interesting? Support Converting Colors with the new Membership Option!

The pro membership hides all ads, plus gives you double the colors in the color bucket, and more awesome pro features!

**[Learn more, Memberships starting at \\$2.50/m!](#)**

**Follow me  
on Twitter!**

@ConvertingColor