

Converting Colors

Android(4292040581)

Have a look what the booklet for
Android(4292040581) contains.

Android(4292040581)	3
<i>Conversions</i>	4
<i>Details</i>	6
<i>Harmonies</i>	11
<i>Previews</i>	23
<i>Color Blindness Simulation</i>	26
<i>CSS Examples</i>	29

Color

Android(4292040581)

Conversions

Conversions Part 1

Format	Color
Hex	D35785
RGB	211, 87, 133
RGB Percent	83%, 34%, 52%
CMY	0.1725, 0.6588, 0.4784
CMYK	0.00, 0.59, 0.37, 0.17
HSL	338°, 58%, 58%
HSV	338°, 59%, 83%
XYZ	34.5058, 22.3587, 24.6873
YIQ	129.3200, 59.1380, 40.5940

Conversions

Conversions Part 2

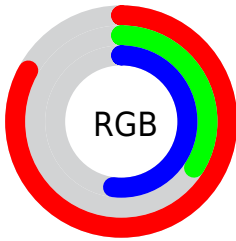
Format	Color
R_{YB}	211, 87, 133
Decimal	13850501
CIE _{Lab}	54.41, 53.22, -0.57
CIE _{LCh}	54, 53.218, 359.390
Yxy	22.3587, 0.4231, 0.2742
Android (android.graphics.Color)	4292040581 (0xFFD35785)
YUV	129.3200, 1.8142, 71.6334
Hunter-Lab	47.2850, 47.5099, 2.1445

Details

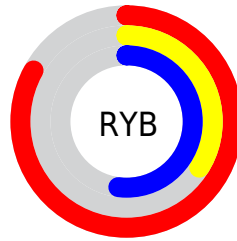
The Android color **4292040581** is a dark color, and the websafe version is hex **CC6699**. The color can be described as middle muted rose. A complement of this color would be **4283945893**, and the grayscale version is **4286677377**.

A 20% lighter version of the original color is **4294938298**, and **4288158804** is the 20% darker color. If you saturate the color by 10%, you get **4292035192**, and if you desaturate by 10%, it is **4292045970**.

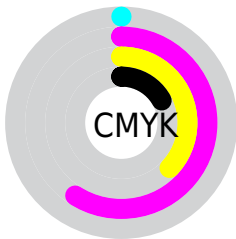
Distribution



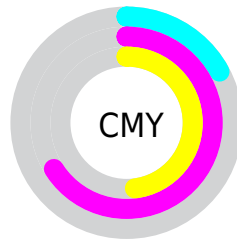
- Red (83%)
- Green (34%)
- Blue (52%)



- Red (83%)
- Yellow (34%)
- Blue (52%)



- Cyan (0%)
- Magenta (59%)
- Yellow (37%)
- Black (17%)



- Cyan (17%)
- Magenta (66%)
- Yellow (48%)

Brightness & Saturation Gradients

These gradients show how the Android color 4292040581 changes by changing the brightness by 10 percent. The first figure shows a shift by +10% for each color and the second figure -10%.

Similar to the brightness gradients but the following saturation gradients show a change of the Android color 4292040581 by changing the saturation by 10% instead.

 4292040581

 4292040581

4294967295

 4290067308

 4294938298

 4288158804

 4294945494

 4286316605

 4294952690

 4284481575

 4294960127

 4282712082

 4280942593

 4278190080

 4292040581

 4292040581

 4292035192

 4292045970

 4292029802

 4292051360

 4292024413

 4292056749

 4292019024

 4292062138

 4292018254

 4292067783

 4292073173

 4292078562

 4292083695

 4292083708

Harmonies

Analogous

The Analogous color harmony consists of three colors that are next to each other on the color wheel.



4290339762



4292040581



4292042072

Triad

The Triadic color harmony groups three colors that are evenly spaced from another and form a triangle on the color wheel.



4292040581



4285369643



4278227921

Complementary

The Complementary color scheme is a pair of colors which are on the opposite of each other on the color wheel.



4292040581



4283945893

Split Complementary

Split-complementary colors differ from the complementary color scheme. The scheme consists of three colors, the original color and two neighbors of the complement color.



4278229166



4292040581



4280849489

Square

The Square scheme is like the rectangle color scheme, but the four colors are evenly spaced on the color wheel.



4292040581



4288380956



4278229120



4278225118

Rectangle

The Rectangle color scheme consists of four colors that form a rectangle on the color wheel.



4292040581



4291258429



4278229120



4278228423

Sweetspot

The Sweet Spot groups the original color and five complimentary colors.



4292040581



4294955490



4288894931



4286604142



4278190080



4286611584

Same Dimension

The Same Dimension uses a secret algorithm to generate beautiful new colors.



4292040581



4294920845



4292044119



4285095522



4289200190



4280877071

Inverse Universe

The Inverse Universe completely reimagines the original color for something new.



4292040581



4294920845



4283942355



4285095522



4289200190



4280877071

Previews

White Background



This preview shows how the Android color 4292040581 looks on a white background.

Color Contrast Check

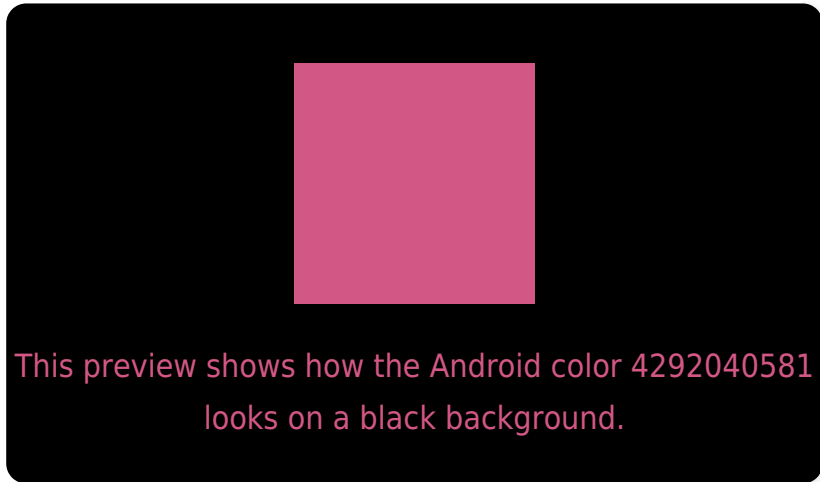
Large Text (above 18pt) WCAG AA ✓ Pass

Any Text WCAG AA ✗ Fail

Large Text (above 18pt) WCAG AAA ✗ Fail

Any Text WCAG AAA ✗ Fail

Black Background



Color Contrast Check

Large Text (above 18pt) WCAG AA ✓ Pass

Any Text WCAG AA ✓ Pass

Large Text (above 18pt) WCAG AAA ✓ Pass

Any Text WCAG AAA × Fail

If you want to check with other color combinations, try the [Color Contrast Checker](#).

Android 4292040581 Background



This preview shows how black text looks on a background with the Android color 4292040581.




This preview shows how white text looks on a background with the Android color 4292040581.

Color Blindness Simulation

Color vision deficiency is a very complex topic, and I could not describe the different causes any better than Wikipedia does, so if you want to learn more, you should check out their [article about color blindness](#).

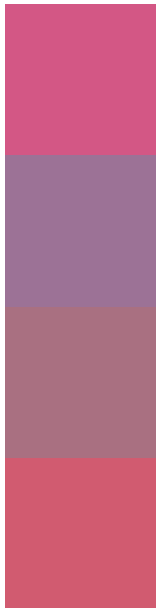
Dichromacy





Tritanopia
4291845732

Trichromacy



Original Color
4292040581

Protanomaly
4288443030

Deuteranomaly
4289294465

Tritanomaly
4291910512

Monochromacy



Original Color
4292040581

Achromatopsia
4286677377

Achromatomaly
4288639618

CSS Examples

Text

The CSS property to change the color of the text to Android 4292040581 is called "color". The color property can be set on classes, ids or directly on the HTML element.

This example shows how text in the color `rgb(211, 87, 133)` looks like.

```
.text, #text, p{  
    color:rgb(211, 87, 133)  
}
```

If you want to add a text shadow in that color use the text-shadow property, you can generate a text shadow directly with our [CSS Text Shadow Generator](#).

Here you see how black text with a 4 pixel rgb(211, 87, 133) colored shadow looks like.

```
.shadow{ text-shadow: 4px 4px 2px rgb(211, 87, 133) }
```

Border

The CSS property to change the border of an element to Android 4292040581 is called "border". The border property can be set on classes, ids or directly on the HTML element.

This example shows the color as border, it can be applied via the CSS property "border" or "border-color".

```
.border, #border, table{ border:4px solid rgb(211, 87, 133) }
```

If only the border color should be changed use the property `border-color`.

```
.border{ border-color:rgb(211, 87, 133) }
```

If you want to add a box shadow in that color use:

Here you see how a box with a 4 pixel `rgb(211, 87, 133)` colored shadow looks like.

```
.boxshadow{ -moz-box-shadow:4px 4px 4px  
4px rgb(211, 87, 133); -webkit-box-  
shadow:4px 4px 4px 4px rgb(211, 87, 133);  
box-shadow:4px 4px 4px 4px rgb(211, 87,  
133) }
```

Background

The CSS property to change the background color of an element to Android 4292040581 is called "background". The background property can be set on classes, ids or directly on the HTML element.

```
.background, #background, body{  
background: rgb(211, 87, 133) }
```

If only the background color should be changed can be used:

```
.background{ background-color: rgb(211, 87,  
133) }
```

This example shows the color as background, it is applied via the CSS property "background".

To optimize and compress your CSS code, you can use our [online CSS compressor and optimizer](#) based on csstidy. If you want to create a linear or radial gradient as background or border, check our [CSS Gradient Generator](#).

Hey! You found this booklet interesting? Support Converting Colors with the new Membership Option!

The pro membership hides all ads, plus gives you double the colors in the color bucket, and more awesome pro features!

[Learn more, Memberships starting at \\$2.50/m!](#)

**Follow me
on Twitter!**

@ConvertingColor