

# Converting Colors

Android(4292050573)

Have a look what the booklet for  
Android(4292050573) contains.

<b>Android(4292050573)</b> .....	3
<i><b>Conversions</b></i> .....	4
<i><b>Details</b></i> .....	6
<i><b>Harmonies</b></i> .....	11
<i><b>Previews</b></i> .....	23
<i><b>Color Blindness Simulation</b></i> .....	26
<i><b>CSS Examples</b></i> .....	29

# **Color**

**Android(4292050573)**

# Conversions

## Conversions Part 1

Format	Color
Hex	D37E8D
RGB	211, 126, 141
RGB Percent	83%, 49%, 55%
CMY	0.1725, 0.5059, 0.4471
CMYK	0.00, 0.40, 0.33, 0.17
HSL	349°, 49%, 66%
HSV	349°, 40%, 83%
XYZ	39.1325, 30.6937, 29.0613
YIQ	153.1250, 45.8450, 22.6850

# Conversions

## Conversions Part 2

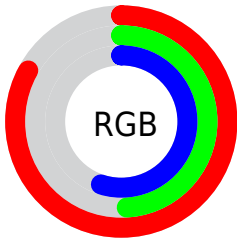
Format	Color
R <sub>Y</sub> B	211, 126, 141
Decimal	13860493
CIE Lab	62.25, 34.69, 6.14
CIE LCh	62, 35.229, 10.038
Yxy	30.6937, 0.3957, 0.3104
Android (android.graphics.Color)	4292050573 (0xFFD37E8D)
YUV	153.1250, -5.9776, 50.7564
Hunter-Lab	55.4019, 29.1283, 7.6805

# Details

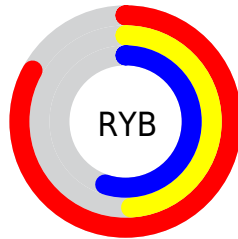
The Android color `4292050573` is a light color, and the websafe version is hex `CC6666`. A complement of this color would be `4286501828`, and the grayscale version is `4288256409`.

A 20% lighter version of the original color is `4294948035`, and `4288301915` is the 20% darker color. If you saturate the color by 10%, you get `4292045180`, and if you desaturate by 10%, it is `4292055966`.

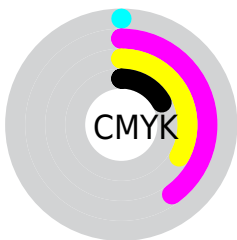
# Distribution



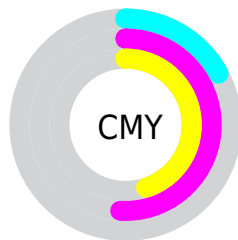
- Red (83%)
- Green (49%)
- Blue (55%)



- Red (83%)
- Yellow (49%)
- Blue (55%)



- Cyan (0%)
- Magenta (40%)
- Yellow (33%)
- Black (17%)



- Cyan (17%)
- Magenta (51%)
- Yellow (45%)

# Brightness & Saturation Gradients

These gradients show how the Android color 4292050573 changes by changing the brightness by 10 percent. The first figure shows a shift by +10% for each color and the second figure -10%.

Similar to the brightness gradients but the following saturation gradients show a change of the Android color 4292050573 by changing the saturation by 10% instead.



 4292050573

 4292050573

4294967295

 4290143348

 4294948035

 4288301915

 4294955230

 4286460484

 4294962427

 4284750126

 4282974233

 4281466880

 4278386688

 4278190080

 4292050573

 4292050573

 4292045180

 4292055966

 4292039786

 4292061360

 4292034393

 4292066753

 4292028999

 4292072147

 4292023606

 4292077540

 4292018213

 4292083189

 4292083711

# Harmonies

## Analogous

The Analogous color harmony consists of three colors that are next to each other on the color wheel.



4291199405



4292050573



4291789680

# Triad

The Triadic color harmony groups three colors that are evenly spaced from another and form a triangle on the color wheel.



4292050573



4286488677



4282556369

# Complementary

The Complementary color scheme is a pair of colors which are on the opposite of each other on the color wheel.



4292050573



4286501828

# Split Complementary

Split-complementary colors differ from the complementary color scheme. The scheme consists of three colors, the original color and two neighbors of the complement color.



4278232510



4292050573



4283934336

# Square

The Square scheme is like the rectangle color scheme, but the four colors are evenly spaced on the color wheel.



4292050573



4288780376



4280788896



4286224084

# Rectangle

The Rectangle color scheme consists of four colors that form a rectangle on the color wheel.



4292050573



4291070561



4280788896



4281180876



# Sweetspot

The Sweet Spot groups the original color and five complimentary colors.



4292050573



4294959334



4291002067



4286606961



4278190080



4286611584



# Same Dimension

The Same Dimension uses a secret algorithm to generate beautiful new colors.



4292050573



4294935962



4292057470



4285095520



4289200158



4280877063



# Inverse Universe

The Inverse Universe completely reimagines the original color for something new.



4292050573



4294935962



4286494931



4285095520



4289200158



4280877063



# Previews

## White Background



This preview shows how the Android color 4292050573 looks on a white background.

## Color Contrast Check

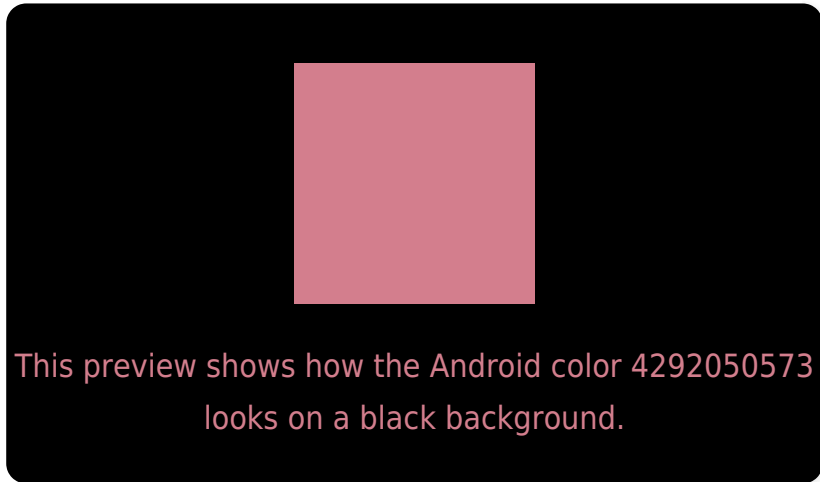
Large Text (above 18pt) WCAG AA × Fail

Any Text WCAG AA × Fail

Large Text (above 18pt) WCAG AAA × Fail

Any Text WCAG AAA × Fail

# Black Background



## Color Contrast Check

Large Text (above 18pt) WCAG AA ✓ Pass

Any Text WCAG AA ✓ Pass

Large Text (above 18pt) WCAG AAA ✓ Pass

Any Text WCAG AAA ✓ Pass

If you want to check with other color combinations, try the [Color Contrast Checker](#).



# Android 4292050573 Background



This preview shows how black text looks on a background with the Android color 4292050573.



This preview shows how white text looks on a background with the Android color 4292050573.

# Color Blindness Simulation

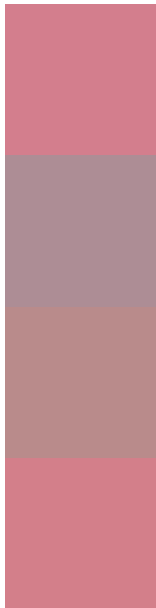
Color vision deficiency is a very complex topic, and I could not describe the different causes any better than Wikipedia does, so if you want to learn more, you should check out their [article about color blindness](#).

## Dichromacy





# Trichromacy



**Original Color**  
4292050573

**Protanomaly**  
4289564053

**Deuteranomaly**  
4290349963

**Tritanomaly**  
4292050826

# Monochromacy



**Original Color**  
4292050573

**Achromatopsia**  
4288256409

**Achromatomaly**  
4289630101

# CSS Examples

## Text

The CSS property to change the color of the text to Android 4292050573 is called "color". The color property can be set on classes, ids or directly on the HTML element.

This example shows how text in the color `rgb(211, 126, 141)` looks like.

```
.text, #text, p{  
    color:rgb(211, 126, 141)  
}
```

If you want to add a text shadow in that color use the text-shadow property, you can generate a text shadow directly with our [CSS Text Shadow Generator](#).

Here you see how black text with a 4 pixel rgb(211, 126, 141) colored shadow looks like.

```
.shadow{ text-shadow: 4px 4px 2px rgb(211, 126, 141) }
```

## Border

The CSS property to change the border of an element to Android 4292050573 is called "border". The border property can be set on classes, ids or directly on the HTML element.

This example shows the color as border, it can be applied via the CSS property "border" or "border-color".

```
.border, #border, table{ border:4px solid rgb(211, 126, 141) }
```

If only the border color should be changed use the property `border-color`.

```
.border{ border-color:rgb(211, 126, 141) }
```

If you want to add a box shadow in that color use:

Here you see how a box with a 4 pixel `rgb(211, 126, 141)` colored shadow looks like.

```
.boxshadow{ -moz-box-shadow:4px 4px 4px  
4px rgb(211, 126, 141); -webkit-box-  
shadow:4px 4px 4px 4px rgb(211, 126, 141);  
box-shadow:4px 4px 4px 4px rgb(211, 126,  
141) }
```

# Background

The CSS property to change the background color of an element to Android 4292050573 is called "background". The background property can be set on classes, ids or directly on the HTML element.

```
.background, #background, body{  
background: rgb(211, 126, 141) }
```

If only the background color should be changed can be used:

```
.background{ background-color: rgb(211,  
126, 141) }
```

This example shows the color as background, it is applied via the CSS property "background".

To optimize and compress your CSS code, you can use our [online CSS compressor and optimizer](#) based on csstidy. If you want to create a linear or radial gradient as background or border, check our [CSS Gradient Generator](#).



Hey! You found this booklet interesting? Support Converting Colors with the new Membership Option!

The pro membership hides all ads, plus gives you double the colors in the color bucket, and more awesome pro features!

**[Learn more, Memberships starting at \\$2.50/m!](#)**

**Follow me  
on Twitter!**

@ConvertingColor