

Converting Colors

Android(4292061604)

Have a look what the booklet for
Android(4292061604) contains.

Android(4292061604)	3
<i>Conversions</i>	4
<i>Details</i>	6
<i>Harmonies</i>	11
<i>Previews</i>	23
<i>Color Blindness Simulation</i>	26
<i>CSS Examples</i>	29

Color

Android(4292061604)

Conversions

Conversions Part 1

Format	Color
Hex	D3A9A4
RGB	211, 169, 164
RGB Percent	83%, 66%, 64%
CMY	0.1725, 0.3373, 0.3569
CMYK	0.00, 0.20, 0.22, 0.17
HSL	6°, 35%, 74%
HSV	6°, 22%, 83%
XYZ	47.7528, 44.9052, 41.2727
YIQ	180.9880, 26.6370, 7.3490

Conversions

Conversions Part 2

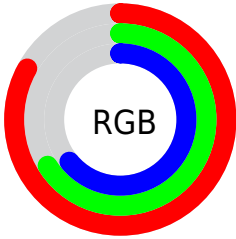
Format	Color
R _Y B	211, 170, 164
Decimal	13871524
CIE Lab	72.83, 14.60, 8.41
CIE LCh	73, 16.851, 29.943
Yxy	44.9052, 0.3565, 0.3353
Android (android.graphics.Color)	4292061604 (0xFFD3A9A4)
YUV	180.9880, -8.3751, 26.3205
Hunter-Lab	67.0113, 9.9307, 10.3908

Details

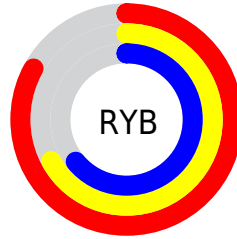
The Android color `4292061604` is a light color, and the websafe version is hex `CC9999`. A complement of this color would be `4288990931`, and the grayscale version is `4290098613`.

A 20% lighter version of the original color is `4294959323`, and `4288443760` is the 20% darker color. If you saturate the color by 10%, you get `4292056719`, and if you desaturate by 10%, it is `4292066489`.

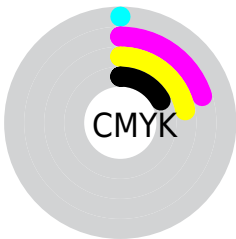
Distribution



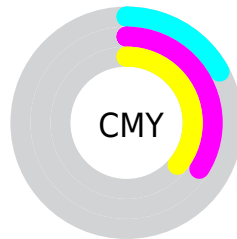
- Red (83%)
- Green (66%)
- Blue (64%)



- Red (83%)
- Yellow (67%)
- Blue (64%)



- Cyan (0%)
- Magenta (20%)
- Yellow (22%)
- Black (17%)



- Cyan (17%)
- Magenta (34%)
- Yellow (36%)

Brightness & Saturation Gradients

These gradients show how the Android color 4292061604 changes by changing the brightness by 10 percent. The first figure shows a shift by +10% for each color and the second figure -10%.

Similar to the brightness gradients but the following saturation gradients show a change of the Android color 4292061604 by changing the saturation by 10% instead.

 4292061604

 4292061604

4294967295

 4290219658

 4294959323

 4288443760

 4294966775

 4286667864

 4284957761

 4283379243

 4281800982

 4280418304

 4278190080

 4292061604

 4292061604

 4292056719

 4292066489

 4292051834

 4292071374

 4292046949

 4292076259

 4292042320

 4292080888

 4292037435

 4292083711

 4292032549

 4292027664

 4292023808

Harmonies

Analogous

The Analogous color harmony consists of three colors that are next to each other on the color wheel.



4291930291



4292061604



4291603865

Triad

The Triadic color harmony groups three colors that are evenly spaced from another and form a triangle on the color wheel.



4292061604



4288527011



4288853201

Complementary

The Complementary color scheme is a pair of colors which are on the opposite of each other on the color wheel.



4292061604



4288990931

Split Complementary

Split-complementary colors differ from the complementary color scheme. The scheme consists of three colors, the original color and two neighbors of the complement color.



4287740109



4292061604



4287610034

Square

The Square scheme is like the rectangle color scheme, but the four colors are evenly spaced on the color wheel.



4292061604



4289640088



4287282113



4290162637

Rectangle

The Rectangle color scheme consists of four colors that form a rectangle on the color wheel.



4292061604



4291080341



4287282113



4288394961

Sweetspot

The Sweet Spot groups the original color and five complimentary colors.



4292061604



4294963181



4292060366



4286609013



4278190080



4286611584

Same Dimension

The Same Dimension uses a secret algorithm to generate beautiful new colors.



4292061604



4294951354



4292067492



4285095774



4289204736



4280878080

Inverse Universe

The Inverse Universe completely reimagines the original color for something new.



4288990931



4290443519



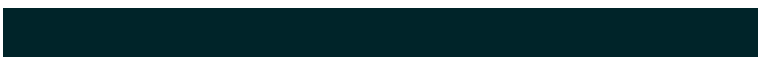
4288985043



4284376937



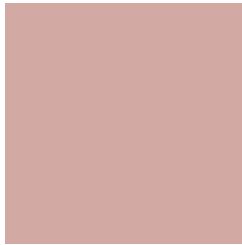
4278228648



4278199337

Previews

White Background



This preview shows how the Android color 4292061604 looks on a white background.

Color Contrast Check

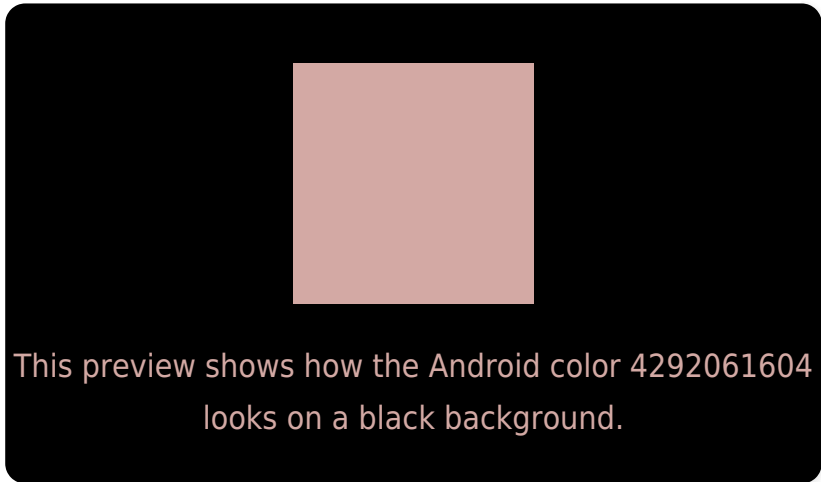
Large Text (above 18pt) WCAG AA × Fail

Any Text WCAG AA × Fail

Large Text (above 18pt) WCAG AAA × Fail

Any Text WCAG AAA × Fail

Black Background



Color Contrast Check

Large Text (above 18pt) WCAG AA ✓ Pass

Any Text WCAG AA ✓ Pass

Large Text (above 18pt) WCAG AAA ✓ Pass

Any Text WCAG AAA ✓ Pass

If you want to check with other color combinations, try the [Color Contrast Checker](#).

Android 4292061604 Background



This preview shows how black text looks on a background with the Android color 4292061604.



This preview shows how white text looks on a background with the Android color 4292061604.

Color Blindness Simulation

Color vision deficiency is a very complex topic, and I could not describe the different causes any better than Wikipedia does, so if you want to learn more, you should check out their [article about color blindness](#).


Dichromacy



Original Color
4292061604

Protanopia
4290359977

Deuteranopia
4291472803



Tritanopia
4292192180

Trichromacy



Original Color
4292061604

Protanomaly
4290949031

Deuteranomaly
4291669155

Tritanomaly
4292126894

Monochromacy



Original Color
4292061604

Achromatopsia
4290098613

Achromatomaly
4290818479

CSS Examples

Text

The CSS property to change the color of the text to Android 4292061604 is called "color". The color property can be set on classes, ids or directly on the HTML element.

This example shows how text in the color `rgb(211, 169, 164)` looks like.

```
.text, #text, p{  
    color:rgb(211, 169, 164)  
}
```

If you want to add a text shadow in that color use the text-shadow property, you can generate a text shadow directly with our [CSS Text Shadow Generator](#).

Here you see how black text with a 4 pixel rgb(211, 169, 164) colored shadow looks like.

```
.shadow{ text-shadow: 4px 4px 2px rgb(211, 169, 164) }
```

Border

The CSS property to change the border of an element to Android 4292061604 is called "border". The border property can be set on classes, ids or directly on the HTML element.

This example shows the color as border, it can be applied via the CSS property "border" or "border-color".

```
.border, #border, table{ border:4px solid rgb(211, 169, 164) }
```

If only the border color should be changed use the property `border-color`.

```
.border{ border-color:rgb(211, 169, 164) }
```

If you want to add a box shadow in that color use:

Here you see how a box with a 4 pixel `rgb(211, 169, 164)` colored shadow looks like.

```
.boxshadow{ -moz-box-shadow:4px 4px 4px  
4px rgb(211, 169, 164); -webkit-box-  
shadow:4px 4px 4px 4px rgb(211, 169, 164);  
box-shadow:4px 4px 4px 4px rgb(211, 169,  
164) }
```

Background

The CSS property to change the background color of an element to Android 4292061604 is called "background". The background property can be set on classes, ids or directly on the HTML element.

```
.background, #background, body{  
background: rgb(211, 169, 164) }
```

If only the background color should be changed can be used:

```
.background{ background-color: rgb(211,  
169, 164) }
```

This example shows the color as background, it is applied via the CSS property "background".

To optimize and compress your CSS code, you can use our [online CSS compressor and optimizer](#) based on csstidy. If you want to create a linear or radial gradient as background or border, check our [CSS Gradient Generator](#).

Hey! You found this booklet interesting? Support Converting Colors with the new Membership Option!

The pro membership hides all ads, plus gives you double the colors in the color bucket, and more awesome pro features!

[Learn more, Memberships starting at \\$2.50/m!](#)

**Follow me
on Twitter!**

@ConvertingColor