

Converting Colors

Android(4292063402)

Have a look what the booklet for
Android(4292063402) contains.

Android(4292063402)	3
<i>Conversions</i>	4
<i>Details</i>	6
<i>Harmonies</i>	11
<i>Previews</i>	23
<i>Color Blindness Simulation</i>	26
<i>CSS Examples</i>	29

Color

Android(4292063402)

Conversions

Conversions Part 1

Format	Color
Hex	D3B0AA
RGB	211, 176, 170
RGB Percent	83%, 69%, 67%
CMY	0.1725, 0.3098, 0.3333
CMYK	0.00, 0.17, 0.19, 0.17
HSL	9°, 32%, 75%
HSV	9°, 19%, 83%
XYZ	49.6450, 47.8018, 44.6403
YIQ	185.7810, 22.7860, 5.5540

Conversions

Conversions Part 2

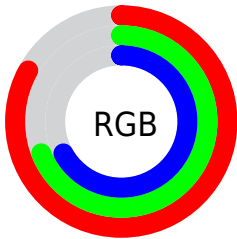
Format	Color
R _Y B	211, 177, 170
Decimal	13873322
CIE Lab	74.70, 11.72, 7.80
CIE LCh	75, 14.081, 33.645
Yxy	47.8018, 0.3494, 0.3364
Android (android.graphics.Color)	4292063402 (0xFFD3B0AA)
YUV	185.7810, -7.7800, 22.1171
Hunter-Lab	69.1389, 7.1785, 10.1159

Details

The Android color `4292063402` is a light color, and the websafe version is hex `CC9999`. A complement of this color would be `4289383891`, and the grayscale version is `4290427578`.

A 20% lighter version of the original color is `4294961377`, and `4288445302` is the 20% darker color. If you saturate the color by 10%, you get `4292058773`, and if you desaturate by 10%, it is `4292068031`.

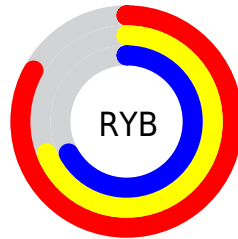
Distribution



Red (83%)

Green (69%)

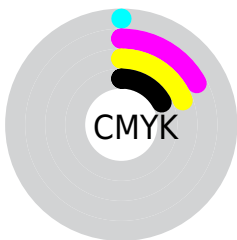
Blue (67%)



Red (83%)

Yellow (69%)

Blue (67%)

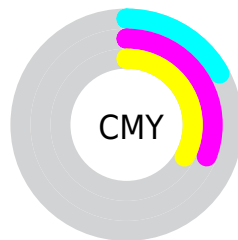


Cyan (0%)

Magenta (17%)

Yellow (19%)

Black (17%)



Cyan (17%)

Magenta (31%)

Yellow (33%)

Brightness & Saturation Gradients

These gradients show how the Android color 4292063402 changes by changing the brightness by 10 percent. The first figure shows a shift by +10% for each color and the second figure -10%.

Similar to the brightness gradients but the following saturation gradients show a change of the Android color 4292063402 by changing the saturation by 10% instead.



4292063402



4292063402

4294967295



4290221456



4294961377



4288445302

4294967294



4286734941



4285025094



4283380783



4281867803



4280485632



4278190080



4292063402



4292063402

 4292058773

 4292068031

 4292054144

 4292072660

 4292049515

 4292077289

 4292044886

 4292081918

 4292040257

 4292083711

 4292035627

 4292030998

 4292026369

 4292026112

Harmonies

Analogous

The Analogous color harmony consists of three colors that are next to each other on the color wheel.



4291997623



4292063402



4291670945

Triad

The Triadic color harmony groups three colors that are evenly spaced from another and form a triangle on the color wheel.



4292063402



4288986796



4289509585

Complementary

The Complementary color scheme is a pair of colors which are on the opposite of each other on the color wheel.



4292063402



4289383891

Split Complementary

Split-complementary colors differ from the complementary color scheme. The scheme consists of three colors, the original color and two neighbors of the complement color.



4288593103



4292063402



4288266425

Square

The Square scheme is like the rectangle color scheme, but the four colors are evenly spaced on the color wheel.



4292063402



4289903522



4288135110



4290557133

Rectangle

The Rectangle color scheme consists of four colors that form a rectangle on the color wheel.



4292063402



4291147422



4288135110



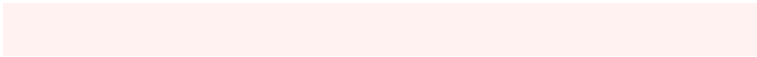
4289182417

Sweetspot

The Sweet Spot groups the original color and five complimentary colors.



4292063402



4294963952



4292061902



4286609527



4278190080



4286611584

Same Dimension

The Same Dimension uses a secret algorithm to generate beautiful new colors.



4292063402



4294954436



4292068522



4285096030



4289206528



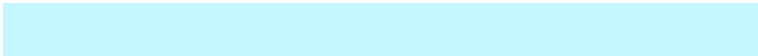
4280878592

Inverse Universe

The Inverse Universe completely reimagines the original color for something new.



4289383891



4291098367



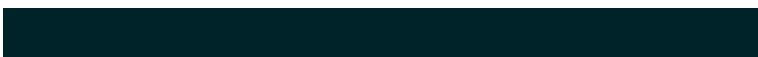
4289378771



4284376937



4278227112



4278199081

Previews

White Background



This preview shows how the Android color 4292063402 looks on a white background.

Color Contrast Check

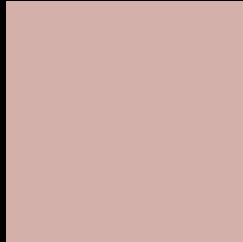
Large Text (above 18pt) WCAG AA × Fail

Any Text WCAG AA × Fail

Large Text (above 18pt) WCAG AAA × Fail

Any Text WCAG AAA × Fail

Black Background



This preview shows how the Android color 4292063402 looks on a black background.

Color Contrast Check

Large Text (above 18pt) WCAG AA ✓ Pass

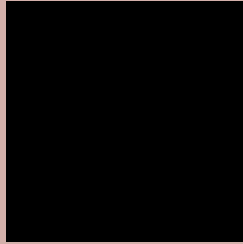
Any Text WCAG AA ✓ Pass

Large Text (above 18pt) WCAG AAA ✓ Pass

Any Text WCAG AAA ✓ Pass

If you want to check with other color combinations, try the [Color Contrast Checker](#).

Android 4292063402 Background



This preview shows how black text looks on a background with the Android color 4292063402.



This preview shows how white text looks on a background with the Android color 4292063402.

Color Blindness Simulation

Color vision deficiency is a very complex topic, and I could not describe the different causes any better than Wikipedia does, so if you want to learn more, you should check out their [article about color blindness](#).


Dichromacy



Original Color
4292063402

Protanopia
4290688942

Deuteranopia
4291801770



Tritanopia
4292193723

Trichromacy



Original Color
4292063402

Protanomaly
4291212461

Deuteranomaly
4291867050

Tritanomaly
4292128437

Monochromacy



Original Color
4292063402

Achromatopsia
4290427578

Achromatomaly
4291016372

CSS Examples

Text

The CSS property to change the color of the text to Android 4292063402 is called "color". The color property can be set on classes, ids or directly on the HTML element.

This example shows how text in the color `rgb(211, 176, 170)` looks like.

```
.text, #text, p{  
    color:rgb(211, 176, 170)  
}
```

If you want to add a text shadow in that color use the text-shadow property, you can generate a text shadow directly with our [CSS Text Shadow Generator](#).

Here you see how black text with a 4 pixel rgb(211, 176, 170) colored shadow looks like.

```
.shadow{ text-shadow: 4px 4px 2px rgb(211, 176, 170) }
```

Border

The CSS property to change the border of an element to Android 4292063402 is called "border". The border property can be set on classes, ids or directly on the HTML element.

This example shows the color as border, it can be applied via the CSS property "border" or "border-color".

```
.border, #border, table{ border:4px solid rgb(211, 176, 170) }
```

If only the border color should be changed use the property `border-color`.

```
.border{ border-color:rgb(211, 176, 170) }
```

If you want to add a box shadow in that color use:

Here you see how a box with a 4 pixel `rgb(211, 176, 170)` colored shadow looks like.

```
.boxshadow{ -moz-box-shadow:4px 4px 4px 4px rgb(211, 176, 170); -webkit-box-shadow:4px 4px 4px 4px rgb(211, 176, 170); box-shadow:4px 4px 4px 4px rgb(211, 176, 170) }
```

Background

The CSS property to change the background color of an element to Android 4292063402 is called "background". The background property can be set on classes, ids or directly on the HTML element.

```
.background, #background, body{  
background: rgb(211, 176, 170) }
```

If only the background color should be changed can be used:

```
.background{ background-color: rgb(211,  
176, 170) }
```

This example shows the color as background, it is applied via the CSS property "background".

To optimize and compress your CSS code, you can use our [online CSS compressor and optimizer](#) based on csstidy. If you want to create a linear or radial gradient as background or border, check our [CSS Gradient Generator](#).

Hey! You found this booklet interesting? Support Converting Colors with the new Membership Option!

The pro membership hides all ads, plus gives you double the colors in the color bucket, and more awesome pro features!

[Learn more, Memberships starting at \\$2.50/m!](#)

**Follow me
on Twitter!**

@ConvertingColor