

Converting Colors

Android(4292064956)

Have a look what the booklet for
Android(4292064956) contains.

Android(4292064956)	3
<i>Conversions</i>	4
<i>Details</i>	6
<i>Harmonies</i>	11
<i>Previews</i>	23
<i>Color Blindness Simulation</i>	26
<i>CSS Examples</i>	29

Color

Android(4292064956)

Conversions

Conversions Part 1

Format	Color
Hex	D3B6BC
RGB	211, 182, 188
RGB Percent	83%, 71%, 74%
CMY	0.1725, 0.2863, 0.2627
CMYK	0.00, 0.14, 0.11, 0.17
HSL	348°, 25%, 77%
HSV	348°, 14%, 83%
XYZ	52.6690, 50.9356, 54.6326
YIQ	191.3550, 15.3580, 8.0140

Conversions

Conversions Part 2

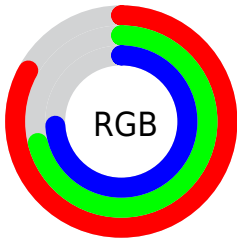
Format	Color
R _Y B	211, 182, 188
Decimal	13874876
CIE Lab	76.64, 11.37, 0.80
CIE LCh	77, 11.403, 4.016
Yxy	50.9356, 0.3328, 0.3219
Android (android.graphics.Color)	4292064956 (0xFFD3B6BC)
YUV	191.3550, -1.6540, 17.2287
Hunter-Lab	71.3692, 6.8333, 4.5724

Details

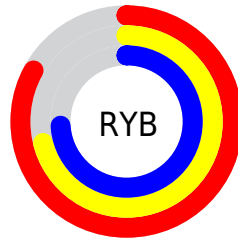
The Android color `4292064956` is a light color, and the websafe version is hex `CCCCCC`. A complement of this color would be `4290171853`, and the grayscale version is `4290756543`.

A 20% lighter version of the original color is `4294962932`, and `4288446855` is the 20% darker color. If you saturate the color by 10%, you get `4292059563`, and if you desaturate by 10%, it is `4292070349`.

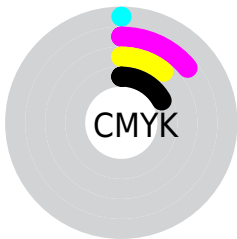
Distribution



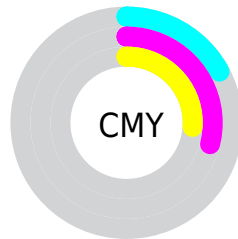
- Red (83%)
- Green (71%)
- Blue (74%)



- Red (83%)
- Yellow (71%)
- Blue (74%)



- Cyan (0%)
- Magenta (14%)
- Yellow (11%)
- Black (17%)



- Cyan (17%)
- Magenta (29%)
- Yellow (26%)

Brightness & Saturation Gradients

These gradients show how the Android color 4292064956 changes by changing the brightness by 10 percent. The first figure shows a shift by +10% for each color and the second figure -10%.

Similar to the brightness gradients but the following saturation gradients show a change of the Android color 4292064956 by changing the saturation by 10% instead.

 4292064956

 4292064956

4294967295

 4290223009

 4294962932

 4288446855

 4286736494

 4285091925

 4283447614

 4281934632

 4280487444

 4278190080

 4292064956

 4292064956

 4292059563

 4292070349

 4292054171

 4292075741

 4292048778

 4292081134

 4292043385

 4292083711

 4292037992

 4292032344

 4292026951

 4292021558

 4292018220

Harmonies

Analogous

The Analogous color harmony consists of three colors that are next to each other on the color wheel.



4291606471



4292064956



4292130738

Triad

The Triadic color harmony groups three colors that are evenly spaced from another and form a triangle on the color wheel.



4292064956



4290298028



4289315280

Complementary

The Complementary color scheme is a pair of colors which are on the opposite of each other on the color wheel.



4292064956



4290171853

Split Complementary

Split-complementary colors differ from the complementary color scheme. The scheme consists of three colors, the original color and two neighbors of the complement color.



4288922568



4292064956



4289577652

Square

The Square scheme is like the rectangle color scheme, but the four colors are evenly spaced on the color wheel.



4292064956



4291083688



4289053630



4290035154

Rectangle

The Rectangle color scheme consists of four colors that form a rectangle on the color wheel.



4292064956



4291934380



4289053630



4289118926

Sweetspot

The Sweet Spot groups the original color and five complimentary colors.



4292064956



4294964727



4291671763



4286609786



4278190080



4286611584

Same Dimension

The Same Dimension uses a secret algorithm to generate beautiful new colors.



4292064956



4294956767



4292066998



4285095520



4289200163



4280877064

Inverse Universe

The Inverse Universe completely reimagines the original color for something new.



4292064956



4294956767



4290169811



4285095520



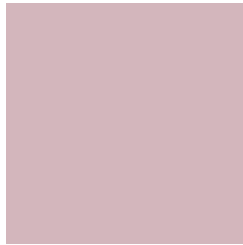
4289200163



4280877064

Previews

White Background



This preview shows how the Android color 4292064956 looks on a white background.

Color Contrast Check

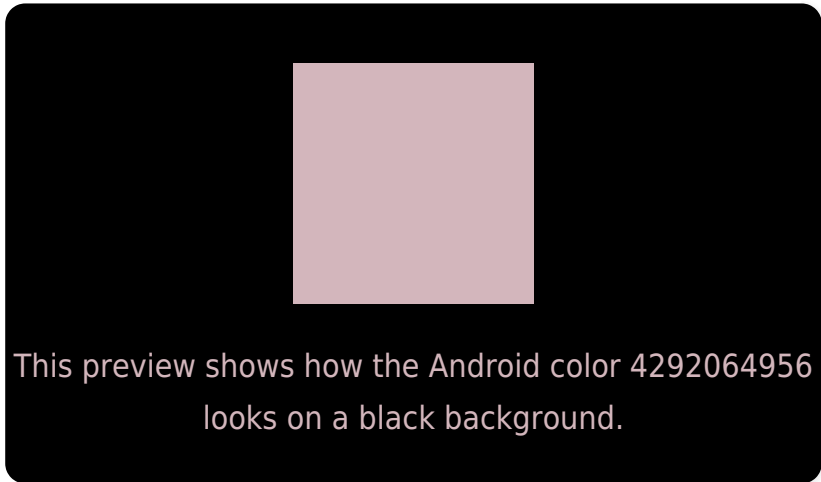
Large Text (above 18pt) WCAG AA × Fail

Any Text WCAG AA × Fail

Large Text (above 18pt) WCAG AAA × Fail

Any Text WCAG AAA × Fail

Black Background



Color Contrast Check

Large Text (above 18pt) WCAG AA ✓ Pass

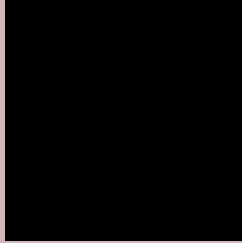
Any Text WCAG AA ✓ Pass

Large Text (above 18pt) WCAG AAA ✓ Pass

Any Text WCAG AAA ✓ Pass

If you want to check with other color combinations, try the [Color Contrast Checker](#).

Android 4292064956 Background



This preview shows how black text looks on a background with the Android color 4292064956.



This preview shows how white text looks on a background with the Android color 4292064956.

Color Blindness Simulation

Color vision deficiency is a very complex topic, and I could not describe the different causes any better than Wikipedia does, so if you want to learn more, you should check out their [article about color blindness](#).

Dichromacy



Original Color
4292064956

Protanopia
4290821312

Deuteranopia
4291868604



Tritanopia
4292130243

Trichromacy



Original Color
4292064956

Protanomaly
4291279551

Deuteranomaly
4291934140

Tritanomaly
4292130240

Monochromacy



Original Color
4292064956

Achromatopsia
4290756543

Achromatomaly
4291214526

CSS Examples

Text

The CSS property to change the color of the text to Android 4292064956 is called "color". The color property can be set on classes, ids or directly on the HTML element.

This example shows how text in the color `rgb(211, 182, 188)` looks like.

```
.text, #text, p{  
    color:rgb(211, 182, 188)  
}
```

If you want to add a text shadow in that color use the text-shadow property, you can generate a text shadow directly with our [CSS Text Shadow Generator](#).

Here you see how black text with a 4 pixel rgb(211, 182, 188) colored shadow looks like.

```
.shadow{ text-shadow: 4px 4px 2px rgb(211, 182, 188) }
```

Border

The CSS property to change the border of an element to Android 4292064956 is called "border". The border property can be set on classes, ids or directly on the HTML element.

This example shows the color as border, it can be applied via the CSS property "border" or "border-color".

```
.border, #border, table{ border:4px solid rgb(211, 182, 188) }
```

If only the border color should be changed use the property `border-color`.

```
.border{ border-color:rgb(211, 182, 188) }
```

If you want to add a box shadow in that color use:

Here you see how a box with a 4 pixel `rgb(211, 182, 188)` colored shadow looks like.

```
.boxshadow{ -moz-box-shadow:4px 4px 4px  
4px rgb(211, 182, 188); -webkit-box-  
shadow:4px 4px 4px 4px rgb(211, 182, 188);  
box-shadow:4px 4px 4px 4px rgb(211, 182,  
188) }
```

Background

The CSS property to change the background color of an element to Android 4292064956 is called "background". The background property can be set on classes, ids or directly on the HTML element.

```
.background, #background, body{  
background: rgb(211, 182, 188) }
```

If only the background color should be changed can be used:

```
.background{ background-color: rgb(211,  
182, 188) }
```

This example shows the color as background, it is applied via the CSS property "background".

To optimize and compress your CSS code, you can use our [online CSS compressor and optimizer](#) based on csstidy. If you want to create a linear or radial gradient as background or border, check our [CSS Gradient Generator](#).

Hey! You found this booklet interesting? Support Converting Colors with the new Membership Option!

The pro membership hides all ads, plus gives you double the colors in the color bucket, and more awesome pro features!

[Learn more, Memberships starting at \\$2.50/m!](#)

**Follow me
on Twitter!**

@ConvertingColor