

Converting Colors

Android(4292065204)

Have a look what the booklet for
Android(4292065204) contains.

Android(4292065204)	3
<i>Conversions</i>	4
<i>Details</i>	6
<i>Harmonies</i>	11
<i>Previews</i>	23
<i>Color Blindness Simulation</i>	26
<i>CSS Examples</i>	29

Color

Android(4292065204)

Conversions

Conversions Part 1

Format	Color
Hex	D3B7B4
RGB	211, 183, 180
RGB Percent	83%, 72%, 71%
CMY	0.1725, 0.2824, 0.2941
CMYK	0.00, 0.13, 0.15, 0.17
HSL	6°, 26%, 77%
HSV	6°, 15%, 83%
XYZ	52.0357, 51.0111, 50.2836
YIQ	191.0300, 17.6510, 5.0030

Conversions

Conversions Part 2

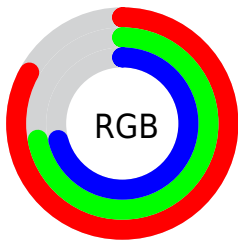
Format	Color
R _Y B	211, 183, 180
Decimal	13875124
CIE Lab	76.69, 9.52, 5.21
CIE LCh	77, 10.857, 28.686
Yxy	51.0111, 0.3394, 0.3327
Android (android.graphics.Color)	4292065204 (0xFFD3B7B4)
YUV	191.0300, -5.4378, 17.5137
Hunter-Lab	71.4221, 5.0603, 8.2533

Details

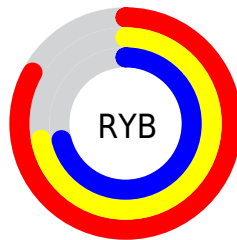
The Android color `4292065204` is a light color, and the websafe version is hex `CCCCCC`. A complement of this color would be `4290040019`, and the grayscale version is `4290756543`.

A 20% lighter version of the original color is `4294963180`, and `4288447103` is the 20% darker color. If you saturate the color by 10%, you get `4292060319`, and if you desaturate by 10%, it is `4292070089`.

Distribution



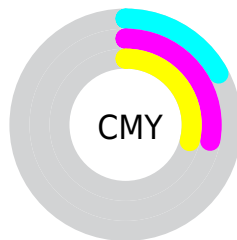
- Red (83%)
- Green (72%)
- Blue (71%)



- Red (83%)
- Yellow (72%)
- Blue (71%)



- Cyan (0%)
- Magenta (13%)
- Yellow (15%)
- Black (17%)



- Cyan (17%)
- Magenta (28%)
- Yellow (29%)

Brightness & Saturation Gradients

These gradients show how the Android color 4292065204 changes by changing the brightness by 10 percent. The first figure shows a shift by +10% for each color and the second figure -10%.

Similar to the brightness gradients but the following saturation gradients show a change of the Android color 4292065204 by changing the saturation by 10% instead.

 4292065204

 4292065204

4294967295

 4290223257

 4294963180

 4288447103

 4286736742

 4285026638

 4283447864

 4281934882

 4280487692

 4278190080

 4292065204

 4292065204

 4292060319

 4292070089

 4292055434

 4292074974

 4292050549

 4292079859

 4292045664

 4292083711

 4292040779

 4292035893

 4292031008

 4292026123

 4292023296

Harmonies

Analogous

The Analogous color harmony consists of three colors that are next to each other on the color wheel.



4291934142



4292065204



4291803564

Triad

The Triadic color harmony groups three colors that are evenly spaced from another and form a triangle on the color wheel.



4292065204



4289774259



4289904337

Complementary

The Complementary color scheme is a pair of colors which are on the opposite of each other on the color wheel.



4292065204



4290040019

Split Complementary

Split-complementary colors differ from the complementary color scheme. The scheme consists of three colors, the original color and two neighbors of the complement color.



4289249742



4292065204



4289184700

Square

The Square scheme is like the rectangle color scheme, but the four colors are evenly spaced on the color wheel.



4292065204



4290494636



4288988102



4290755535

Rectangle

The Rectangle color scheme consists of four colors that form a rectangle on the color wheel.



4292065204



4291410858



4288988102



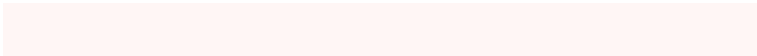
4289707985

Sweetspot

The Sweet Spot groups the original color and five complimentary colors.



4292065204



4294964981



4292064464



4286610041



4278190080



4286611584

Same Dimension

The Same Dimension uses a secret algorithm to generate beautiful new colors.



4292065204



4294956753



4292069044



4285095774



4289204224



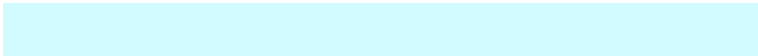
4280878080

Inverse Universe

The Inverse Universe completely reimagines the original color for something new.



4290040019



4291951615



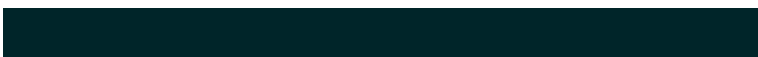
4290036179



4284377193



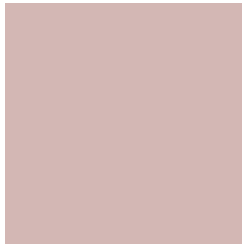
4278229160



4278199593

Previews

White Background



This preview shows how the Android color 4292065204 looks on a white background.

Color Contrast Check

Large Text (above 18pt) WCAG AA × Fail

Any Text WCAG AA × Fail

Large Text (above 18pt) WCAG AAA × Fail

Any Text WCAG AAA × Fail

Black Background



This preview shows how the Android color 4292065204 looks on a black background.

Color Contrast Check

Large Text (above 18pt) WCAG AA ✓ Pass

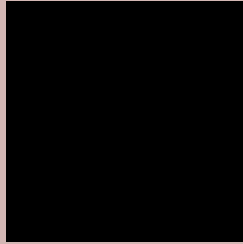
Any Text WCAG AA ✓ Pass

Large Text (above 18pt) WCAG AAA ✓ Pass

Any Text WCAG AAA ✓ Pass

If you want to check with other color combinations, try the [Color Contrast Checker](#).

Android 4292065204 Background



This preview shows how black text looks on a background with the Android color 4292065204.




This preview shows how white text looks on a background with the Android color 4292065204.

Color Blindness Simulation

Color vision deficiency is a very complex topic, and I could not describe the different causes any better than Wikipedia does, so if you want to learn more, you should check out their [article about color blindness](#).

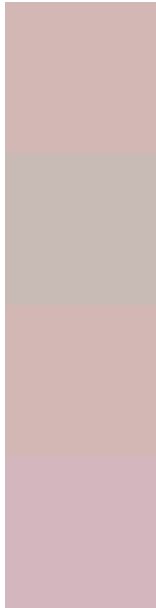
Dichromacy





Tritanopia
4292195779

Trichromacy



Original Color
4292065204

Protanomaly
4291345334

Deuteranomaly
4292065204

Tritanomaly
4292130494

Monochromacy



Original Color
4292065204

Achromatopsia
4290756543

Achromatomaly
4291214523

CSS Examples

Text

The CSS property to change the color of the text to Android 4292065204 is called "color". The color property can be set on classes, ids or directly on the HTML element.

This example shows how text in the color `rgb(211, 183, 180)` looks like.

```
.text, #text, p{  
    color:rgb(211, 183, 180)  
}
```

If you want to add a text shadow in that color use the text-shadow property, you can generate a text shadow directly with our [CSS Text Shadow Generator](#).

Here you see how black text with a 4 pixel rgb(211, 183, 180) colored shadow looks like.

```
.shadow{ text-shadow: 4px 4px 2px rgb(211, 183, 180) }
```

Border

The CSS property to change the border of an element to Android 4292065204 is called "border". The border property can be set on classes, ids or directly on the HTML element.

This example shows the color as border, it can be applied via the CSS property "border" or "border-color".

```
.border, #border, table{ border:4px solid rgb(211, 183, 180) }
```

If only the border color should be changed use the property `border-color`.

```
.border{ border-color:rgb(211, 183, 180) }
```

If you want to add a box shadow in that color use:

Here you see how a box with a 4 pixel `rgb(211, 183, 180)` colored shadow looks like.

```
.boxshadow{ -moz-box-shadow:4px 4px 4px  
4px rgb(211, 183, 180); -webkit-box-  
shadow:4px 4px 4px 4px rgb(211, 183, 180);  
box-shadow:4px 4px 4px 4px rgb(211, 183,  
180) }
```

Background

The CSS property to change the background color of an element to Android 4292065204 is called "background". The background property can be set on classes, ids or directly on the HTML element.

```
.background, #background, body{  
background: rgb(211, 183, 180) }
```

If only the background color should be changed can be used:

```
.background{ background-color: rgb(211,  
183, 180) }
```

This example shows the color as background, it is applied via the CSS property "background".

To optimize and compress your CSS code, you can use our [online CSS compressor and optimizer](#) based on csstidy. If you want to create a linear or radial gradient as background or border, check our [CSS Gradient Generator](#).

Hey! You found this booklet interesting? Support Converting Colors with the new Membership Option!

The pro membership hides all ads, plus gives you double the colors in the color bucket, and more awesome pro features!

[Learn more, Memberships starting at \\$2.50/m!](#)

**Follow me
on Twitter!**

@ConvertingColor