

# Converting Colors

Android(4292066493)

Have a look what the booklet for  
Android(4292066493) contains.

<b>Android(4292066493)</b> .....	3
<b><i>Conversions</i></b> .....	4
<b><i>Details</i></b> .....	6
<b><i>Harmonies</i></b> .....	11
<b><i>Previews</i></b> .....	23
<b><i>Color Blindness Simulation</i></b> .....	26
<b><i>CSS Examples</i></b> .....	29

# **Color**

**Android(4292066493)**

# Conversions

## Conversions Part 1

Format	Color
Hex	D3BCBD
RGB	211, 188, 189
RGB Percent	83%, 74%, 74%
CMY	0.1725, 0.2627, 0.2588
CMYK	0.00, 0.11, 0.10, 0.17
HSL	357°, 21%, 78%
HSV	357°, 11%, 83%
XYZ	54.0325, 53.4894, 55.6208
YIQ	194.9910, 13.3870, 5.1870

# Conversions

## Conversions Part 2

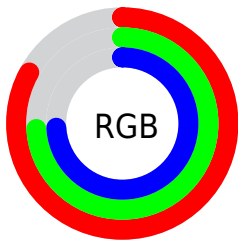
<b>Format</b>	<b>Color</b>
R <sub>Y</sub> B	211, 188, 189
Decimal	13876413
CIE Lab	78.16, 8.32, 2.47
CIE LCh	78, 8.683, 16.541
Yxy	53.4894, 0.3312, 0.3279
Android (android.graphics.Color)	4292066493 (0xFFD3BCBD)
YUV	194.9910, -2.9536, 14.0399
Hunter-Lab	73.1365, 3.8852, 6.1051

# Details

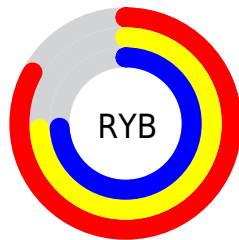
The Android color `4292066493` is a light color, and the websafe version is hex `CCCCCC`. A complement of this color would be `4290565074`, and the grayscale version is `4291019715`.

A 20% lighter version of the original color is `4294964469`, and `4288448392` is the 20% darker color. If you saturate the color by 10%, you get `4292061097`, and if you desaturate by 10%, it is `4292071889`.

# Distribution



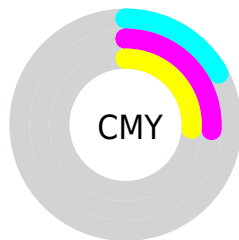
- Red (83%)
- Green (74%)
- Blue (74%)



- Red (83%)
- Yellow (74%)
- Blue (74%)



- Cyan (0%)
- Magenta (11%)
- Yellow (10%)
- Black (17%)



- Cyan (17%)
- Magenta (26%)
- Yellow (26%)

# Brightness & Saturation Gradients

These gradients show how the Android color 4292066493 changes by changing the brightness by 10 percent. The first figure shows a shift by +10% for each color and the second figure -10%.

Similar to the brightness gradients but the following saturation gradients show a change of the Android color 4292066493 by changing the saturation by 10% instead.



 4292066493

 4292066493

4294967295

 4290224546


 4294964469

 4288448392

 4286737774

 4285093206

 4283514431

 4281935913

 4280488981

 4278255616

 4278190080

 4292066493

 4292066493

 4292061097

 4292071889

 4292055701

 4292077285

 4292050304

 4292082682

 4292044908

 4292083711

 4292039512

 4292033860

 4292028464

 4292023068

 4292018185

# Harmonies

## Analogous

The Analogous color harmony consists of three colors that are next to each other on the color wheel.



4291869893



4292066493



4292001206

# Triad

The Triadic color harmony groups three colors that are evenly spaced from another and form a triangle on the color wheel.



4292066493



4290430134



4290102225

# Complementary

The Complementary color scheme is a pair of colors which are on the opposite of each other on the color wheel.



4292066493



4290565074

# Split Complementary

Split-complementary colors differ from the complementary color scheme. The scheme consists of three colors, the original color and two neighbors of the complement color.



4289709517



4292066493



4289906365

# Square

The Square scheme is like the rectangle color scheme, but the four colors are evenly spaced on the color wheel.



4292066493



4291019442



4289644230



4290756817

# Rectangle

The Rectangle color scheme consists of four colors that form a rectangle on the color wheel.



4292066493



4291739571



4289644230



4289971408



# Sweetspot

The Sweet Spot groups the original color and five complimentary colors.



4292066493



4294965240



4292000979



4286610043



4278190080



4286611584



# Same Dimension

The Same Dimension uses a secret algorithm to generate beautiful new colors.



4292066493



4294958815



4292069052



4285095519



4289200135



4280877058

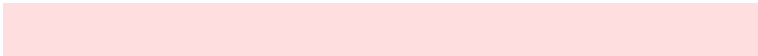


# Inverse Universe

The Inverse Universe completely reimagines the original color for something new.



4292066493



4294958815



4290562515



4285095519



4289200135



4280877058



# Previews

## White Background



This preview shows how the Android color 4292066493 looks on a white background.

## Color Contrast Check

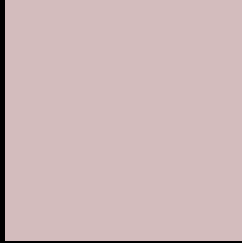
Large Text (above 18pt) WCAG AA × Fail

Any Text WCAG AA × Fail

Large Text (above 18pt) WCAG AAA × Fail

Any Text WCAG AAA × Fail

# Black Background



This preview shows how the Android color 4292066493 looks on a black background.

## Color Contrast Check

Large Text (above 18pt) WCAG AA ✓ Pass

Any Text WCAG AA ✓ Pass

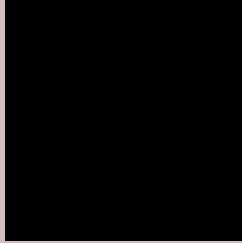
Large Text (above 18pt) WCAG AAA ✓ Pass

Any Text WCAG AAA ✓ Pass

If you want to check with other color combinations, try the [Color Contrast Checker](#).



# Android 4292066493 Background



This preview shows how black text looks on a background with the Android color 4292066493.



This preview shows how white text looks on a background with the Android color 4292066493.

# Color Blindness Simulation

Color vision deficiency is a very complex topic, and I could not describe the different causes any better than Wikipedia does, so if you want to learn more, you should check out their [article about color blindness](#).

## Dichromacy



**Original Color**  
4292066493

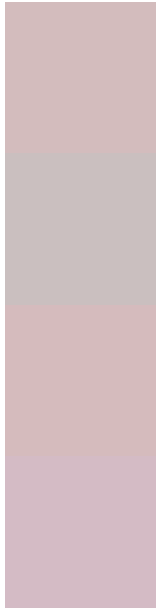
**Protanopia**  
4291150016

**Deuteranopia**  
4292262845



**Tritanopia**  
4292197065

# Trichromacy



**Original Color**  
4292066493

**Protanomaly**  
4291477439

**Deuteranomaly**  
4292197309

**Tritanomaly**  
4292131781

# Monochromacy



**Original Color**  
4292066493

**Achromatopsia**  
4291019715

**Achromatomaly**  
4291412161

# CSS Examples

## Text

The CSS property to change the color of the text to Android 4292066493 is called "color". The color property can be set on classes, ids or directly on the HTML element.

This example shows how text in the color `rgb(211, 188, 189)` looks like.

```
.text, #text, p{  
    color:rgb(211, 188, 189)  
}
```

If you want to add a text shadow in that color use the text-shadow property, you can generate a text shadow directly with our [CSS Text Shadow Generator](#).

Here you see how black text with a 4 pixel rgb(211, 188, 189) colored shadow looks like.

```
.shadow{ text-shadow: 4px 4px 2px rgb(211, 188, 189) }
```

## Border

The CSS property to change the border of an element to Android 4292066493 is called "border". The border property can be set on classes, ids or directly on the HTML element.

This example shows the color as border, it can be applied via the CSS property "border" or "border-color".

```
.border, #border, table{ border:4px solid rgb(211, 188, 189) }
```

If only the border color should be changed use the property `border-color`.

```
.border{ border-color:rgb(211, 188, 189) }
```

If you want to add a box shadow in that color use:

Here you see how a box with a 4 pixel `rgb(211, 188, 189)` colored shadow looks like.

```
.boxshadow{ -moz-box-shadow:4px 4px 4px  
4px rgb(211, 188, 189); -webkit-box-  
shadow:4px 4px 4px 4px rgb(211, 188, 189);  
box-shadow:4px 4px 4px 4px rgb(211, 188,  
189) }
```

# Background

The CSS property to change the background color of an element to Android 4292066493 is called "background". The background property can be set on classes, ids or directly on the HTML element.

```
.background, #background, body{  
background: rgb(211, 188, 189) }
```

If only the background color should be changed can be used:

```
.background{ background-color: rgb(211,  
188, 189) }
```

This example shows the color as background, it is applied via the CSS property "background".

To optimize and compress your CSS code, you can use our [online CSS compressor and optimizer](#) based on csstidy. If you want to create a linear or radial gradient as background or border, check our [CSS Gradient Generator](#).



Hey! You found this booklet interesting? Support Converting Colors with the new Membership Option!

The pro membership hides all ads, plus gives you double the colors in the color bucket, and more awesome pro features!

**[Learn more, Memberships starting at \\$2.50/m!](#)**

**Follow me  
on Twitter!**

@ConvertingColor