

# Converting Colors

Android(4292066742)

Have a look what the booklet for  
Android(4292066742) contains.

<b>Android(4292066742)</b> .....	3
<b><i>Conversions</i></b> .....	4
<b><i>Details</i></b> .....	6
<b><i>Harmonies</i></b> .....	11
<b><i>Previews</i></b> .....	23
<b><i>Color Blindness Simulation</i></b> .....	26
<b><i>CSS Examples</i></b> .....	29

# **Color**

**Android(4292066742)**

# Conversions

## Conversions Part 1

<b>Format</b>	<b>Color</b>
Hex	D3BDB6
RGB	211, 189, 182
RGB Percent	83%, 74%, 71%
CMY	0.1725, 0.2588, 0.2863
CMYK	0.00, 0.10, 0.14, 0.17
HSL	14°, 25%, 77%
HSV	14°, 14%, 83%
XYZ	53.5051, 53.6215, 51.7859
YIQ	194.7800, 15.3590, 2.4870

# Conversions

## Conversions Part 2

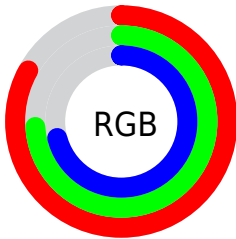
Format	Color
R <sub>Y</sub> B	211, 191, 182
Decimal	13876662
CIE Lab	78.24, 6.64, 6.37
CIE LCh	78, 9.198, 43.811
Yxy	53.6215, 0.3367, 0.3374
Android (android.graphics.Color)	4292066742 (0xFFD3BDB6)
YUV	194.7800, -6.3005, 14.2249
Hunter-Lab	73.2267, 2.2792, 9.3288

# Details

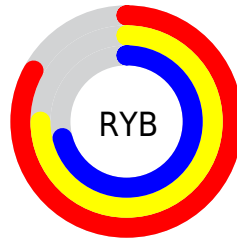
The Android color `4292066742` is a light color, and the websafe version is hex `CCCCCC`. A complement of this color would be `4290170067`, and the grayscale version is `4291019715`.

A 20% lighter version of the original color is `4294964718`, and `4288448641` is the 20% darker color. If you saturate the color by 10%, you get `4292062625`, and if you desaturate by 10%, it is `4292070859`.

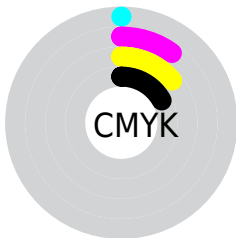
# Distribution



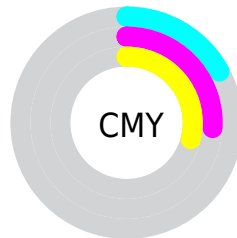
- Red (83%)
- Green (74%)
- Blue (71%)



- Red (83%)
- Yellow (75%)
- Blue (71%)



- Cyan (0%)
- Magenta (10%)
- Yellow (14%)
- Black (17%)



- Cyan (17%)
- Magenta (26%)
- Yellow (29%)

# Brightness & Saturation Gradients

These gradients show how the Android color 4292066742 changes by changing the brightness by 10 percent. The first figure shows a shift by +10% for each color and the second figure -10%.

Similar to the brightness gradients but the following saturation gradients show a change of the Android color 4292066742 by changing the saturation by 10% instead.



 4292066742

 4292066742

4294967295

 4290224795

 4294964718

 4288448641

 4286738024

 4285093456

 4283449145

 4281936164

 4280488974

 4278190080

 4292066742

 4292066742

 4292062625

 4292070859

 4292058508

 4292074976

 4292054391

 4292079093

 4292050274

 4292083199

 4292046157

 4292083711

 4292042039

 4292037922

 4292033805

 4292031232

# Harmonies

## Analogous

The Analogous color harmony consists of three colors that are next to each other on the color wheel.



4292132030



4292066742



4291674033

# Triad

The Triadic color harmony groups three colors that are evenly spaced from another and form a triangle on the color wheel.



4292066742



4289906364



4290691538

# Complementary

The Complementary color scheme is a pair of colors which are on the opposite of each other on the color wheel.



4292066742



4290170067

# Split Complementary

Split-complementary colors differ from the complementary color scheme. The scheme consists of three colors, the original color and two neighbors of the complement color.



4290036946



4292066742



4289578949

# Square

The Square scheme is like the rectangle color scheme, but the four colors are evenly spaced on the color wheel.



4292066742



4290495925



4289644237



4291346126

# Rectangle

The Rectangle color scheme consists of four colors that form a rectangle on the color wheel.



4292066742



4291346865



4289644237



4290429650



# Sweetspot

The Sweet Spot groups the original color and five complimentary colors.



4292066742



4294965237



4292064972



4286610297



4278190080



4286611584



# Same Dimension

The Same Dimension uses a secret algorithm to generate beautiful new colors.



4292066742



4294959318



4292070326



4285096286



4289210624



4280879616

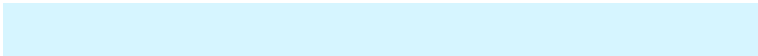


# Inverse Universe

The Inverse Universe completely reimagines the original color for something new.



4290170067



4292277759



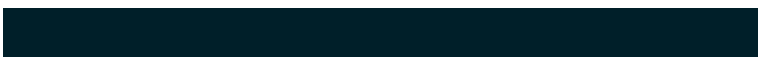
4290166483



4284376681



4278223016

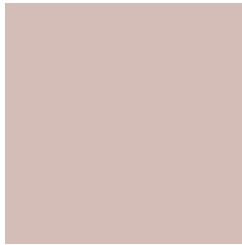


4278198057



# Previews

## White Background



This preview shows how the Android color 4292066742 looks on a white background.

## Color Contrast Check

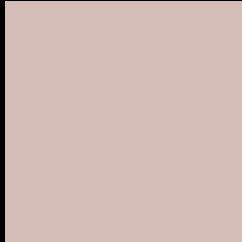
Large Text (above 18pt) WCAG AA × Fail

Any Text WCAG AA × Fail

Large Text (above 18pt) WCAG AAA × Fail

Any Text WCAG AAA × Fail

# Black Background



This preview shows how the Android color 4292066742 looks on a black background.

## Color Contrast Check

Large Text (above 18pt) WCAG AA ✓ Pass

Any Text WCAG AA ✓ Pass

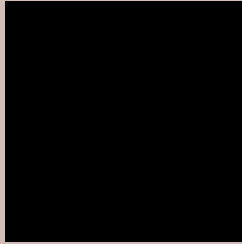
Large Text (above 18pt) WCAG AAA ✓ Pass

Any Text WCAG AAA ✓ Pass

If you want to check with other color combinations, try the [Color Contrast Checker](#).



# Android 4292066742 Background



This preview shows how black text looks on a background with the Android color 4292066742.



This preview shows how white text looks on a background with the Android color 4292066742.

# Color Blindness Simulation

Color vision deficiency is a very complex topic, and I could not describe the different causes any better than Wikipedia does, so if you want to learn more, you should check out their [article about color blindness](#).


## Dichromacy



**Original Color**  
4292066742

**Protanopia**  
4291281336

**Deuteranopia**  
4292393910



**Tritanopia**  
4292197065

# Trichromacy



**Original Color**

4292066742

**Protanomaly**

4291543223

**Deuteranomaly**

4292263094

**Tritanomaly**

4292131778

# Monochromacy



**Original Color**

4292066742

**Achromatopsia**

4291019715

**Achromatomaly**

4291412414

# CSS Examples

## Text

The CSS property to change the color of the text to Android 4292066742 is called "color". The color property can be set on classes, ids or directly on the HTML element.

This example shows how text in the color `rgb(211, 189, 182)` looks like.

```
.text, #text, p{  
    color:rgb(211, 189, 182)  
}
```

If you want to add a text shadow in that color use the text-shadow property, you can generate a text shadow directly with our [CSS Text Shadow Generator](#).

Here you see how black text with a 4 pixel rgb(211, 189, 182) colored shadow looks like.

```
.shadow{ text-shadow: 4px 4px 2px rgb(211, 189, 182) }
```

## Border

The CSS property to change the border of an element to Android 4292066742 is called "border". The border property can be set on classes, ids or directly on the HTML element.

This example shows the color as border, it can be applied via the CSS property "border" or "border-color".

```
.border, #border, table{ border:4px solid rgb(211, 189, 182) }
```

If only the border color should be changed use the property `border-color`.

```
.border{ border-color:rgb(211, 189, 182) }
```

If you want to add a box shadow in that color use:

Here you see how a box with a 4 pixel `rgb(211, 189, 182)` colored shadow looks like.

```
.boxshadow{ -moz-box-shadow:4px 4px 4px  
4px rgb(211, 189, 182); -webkit-box-  
shadow:4px 4px 4px 4px rgb(211, 189, 182);  
box-shadow:4px 4px 4px 4px rgb(211, 189,  
182) }
```

# Background

The CSS property to change the background color of an element to Android 4292066742 is called "background". The background property can be set on classes, ids or directly on the HTML element.

```
.background, #background, body{  
background: rgb(211, 189, 182) }
```

If only the background color should be changed can be used:

```
.background{ background-color: rgb(211,  
189, 182) }
```

This example shows the color as background, it is applied via the CSS property "background".

To optimize and compress your CSS code, you can use our [online CSS compressor and optimizer](#) based on csstidy. If you want to create a linear or radial gradient as background or border, check our [CSS Gradient Generator](#).



Hey! You found this booklet interesting? Support Converting Colors with the new Membership Option!

The pro membership hides all ads, plus gives you double the colors in the color bucket, and more awesome pro features!

**[Learn more, Memberships starting at \\$2.50/m!](#)**

**Follow me  
on Twitter!**

@ConvertingColor