

Converting Colors

Android(4292067519)

Have a look what the booklet for
Android(4292067519) contains.

Android(4292067519)	3
<i>Conversions</i>	4
<i>Details</i>	6
<i>Harmonies</i>	11
<i>Previews</i>	23
<i>Color Blindness Simulation</i>	26
<i>CSS Examples</i>	29

Color

Android(4292067519)

Conversions

Conversions Part 1

Format	Color
Hex	D3C0BF
RGB	211, 192, 191
RGB Percent	83%, 75%, 75%
CMY	0.1725, 0.2471, 0.2510
CMYK	0.00, 0.09, 0.09, 0.17
HSL	3°, 19%, 79%
HSV	3°, 9%, 83%
XYZ	55.1176, 55.3097, 57.0611
YIQ	197.5670, 11.6450, 3.7170

Conversions

Conversions Part 2

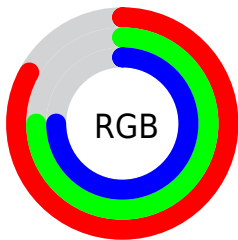
Format	Color
R _Y B	211, 192, 191
Decimal	13877439
CIE Lab	79.22, 6.52, 2.92
CIE LCh	79, 7.150, 24.145
Yxy	55.3097, 0.3291, 0.3302
Android (android.graphics.Color)	4292067519 (0xFFD3C0BF)
YUV	197.5670, -3.2375, 11.7807
Hunter-Lab	74.3705, 2.1417, 6.5689

Details

The Android color `4292067519` is a light color, and the websafe version is hex `CCCCCC`. A complement of this color would be `4290761427`, and the grayscale version is `4291217094`.

A 20% lighter version of the original color is `4294965495`, and `4288449418` is the 20% darker color. If you saturate the color by 10%, you get `4292062378`, and if you desaturate by 10%, it is `4292072660`.

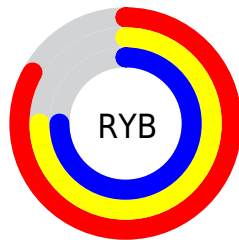
Distribution



Red (83%)

Green (75%)

Blue (75%)



Red (83%)

Yellow (75%)

Blue (75%)

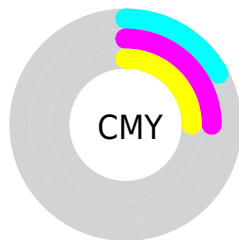


Cyan (0%)

Magenta (9%)

Yellow (9%)

Black (17%)



Cyan (17%)

Magenta (25%)

Yellow (25%)

Brightness & Saturation Gradients

These gradients show how the Android color 4292067519 changes by changing the brightness by 10 percent. The first figure shows a shift by +10% for each color and the second figure -10%.

Similar to the brightness gradients but the following saturation gradients show a change of the Android color 4292067519 by changing the saturation by 10% instead.

 4292067519

 4292067519

4294967295

 4290225572

 4294965495


 4288449418

 4286738800

 4285094232

 4283515201

 4282002219

 4280555286

 4278714368

 4278190080

 4292067519

 4292067519

 4292062378

 4292072660

 4292057237

 4292077801

 4292052096

 4292082942

 4292046955

 4292083711

 4292041814

 4292036672

 4292031531

 4292026390

 4292021249

Harmonies

Analogous

The Analogous color harmony consists of three colors that are next to each other on the color wheel.



4291936454



4292067519



4291936698

Triad

The Triadic color harmony groups three colors that are evenly spaced from another and form a triangle on the color wheel.



4292067519



4290561980



4290561489

Complementary

The Complementary color scheme is a pair of colors which are on the opposite of each other on the color wheel.



4292067519



4290761427

Split Complementary

Split-complementary colors differ from the complementary color scheme. The scheme consists of three colors, the original color and two neighbors of the complement color.



4290168783



4292067519



4290169027

Square

The Square scheme is like the rectangle color scheme, but the four colors are evenly spaced on the color wheel.



4292067519



4291085752



4290037961



4291085264

Rectangle

The Rectangle color scheme consists of four colors that form a rectangle on the color wheel.



4292067519



4291675064



4290037961



4290430673

Sweetspot

The Sweet Spot groups the original color and five complimentary colors.



4292067519



4294965495



4292067282



4286610298



4278190080



4286611584

Same Dimension

The Same Dimension uses a secret algorithm to generate beautiful new colors.



4292067519



4294960355



4292070079



4285095774



4289202176



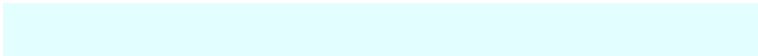
4280877568

Inverse Universe

The Inverse Universe completely reimagines the original color for something new.



4290761427



4293132031



4290758867



4284377193



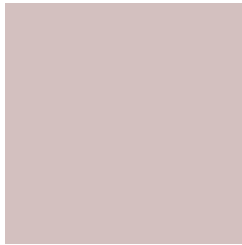
4278231208



4278200105

Previews

White Background



This preview shows how the Android color 4292067519 looks on a white background.

Color Contrast Check

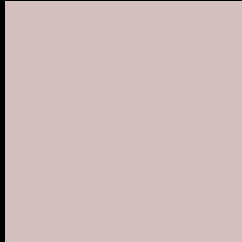
Large Text (above 18pt) WCAG AA × Fail

Any Text WCAG AA × Fail

Large Text (above 18pt) WCAG AAA × Fail

Any Text WCAG AAA × Fail

Black Background



This preview shows how the Android color 4292067519 looks on a black background.

Color Contrast Check

Large Text (above 18pt) WCAG AA ✓ Pass

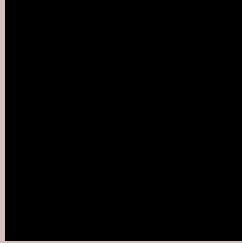
Any Text WCAG AA ✓ Pass

Large Text (above 18pt) WCAG AAA ✓ Pass

Any Text WCAG AAA ✓ Pass

If you want to check with other color combinations, try the [Color Contrast Checker](#).

Android 4292067519 Background



This preview shows how black text looks on a background with the Android color 4292067519.



This preview shows how white text looks on a background with the Android color 4292067519.

Color Blindness Simulation

Color vision deficiency is a very complex topic, and I could not describe the different causes any better than Wikipedia does, so if you want to learn more, you should check out their [article about color blindness](#).


Dichromacy



Original Color
4292067519

Protanopia
4291347393

Deuteranopia
4292460223



Tritanopia
4292198093

Trichromacy



Original Color
4292067519

Protanomaly
4291609280

Deuteranomaly
4292329407

Tritanomaly
4292132808

Monochromacy



Original Color
4292067519

Achromatopsia
4291217094

Achromatomaly
4291544259

CSS Examples

Text

The CSS property to change the color of the text to Android 4292067519 is called "color". The color property can be set on classes, ids or directly on the HTML element.

This example shows how text in the color `rgb(211, 192, 191)` looks like.

```
.text, #text, p{  
    color:rgb(211, 192, 191)  
}
```

If you want to add a text shadow in that color use the text-shadow property, you can generate a text shadow directly with our [CSS Text Shadow Generator](#).

Here you see how black text with a 4 pixel rgb(211, 192, 191) colored shadow looks like.

```
.shadow{ text-shadow: 4px 4px 2px rgb(211, 192, 191) }
```

Border

The CSS property to change the border of an element to Android 4292067519 is called "border". The border property can be set on classes, ids or directly on the HTML element.

This example shows the color as border, it can be applied via the CSS property "border" or "border-color".

```
.border, #border, table{ border:4px solid rgb(211, 192, 191) }
```

If only the border color should be changed use the property `border-color`.

```
.border{ border-color:rgb(211, 192, 191) }
```

If you want to add a box shadow in that color use:

Here you see how a box with a 4 pixel `rgb(211, 192, 191)` colored shadow looks like.

```
.boxshadow{ -moz-box-shadow:4px 4px 4px  
4px rgb(211, 192, 191); -webkit-box-  
shadow:4px 4px 4px 4px rgb(211, 192, 191);  
box-shadow:4px 4px 4px 4px rgb(211, 192,  
191) }
```

Background

The CSS property to change the background color of an element to Android 4292067519 is called "background". The background property can be set on classes, ids or directly on the HTML element.

```
.background, #background, body{  
background: rgb(211, 192, 191) }
```

If only the background color should be changed can be used:

```
.background{ background-color: rgb(211,  
192, 191) }
```

This example shows the color as background, it is applied via the CSS property "background".

To optimize and compress your CSS code, you can use our [online CSS compressor and optimizer](#) based on csstidy. If you want to create a linear or radial gradient as background or border, check our [CSS Gradient Generator](#).

Hey! You found this booklet interesting? Support Converting Colors with the new Membership Option!

The pro membership hides all ads, plus gives you double the colors in the color bucket, and more awesome pro features!

[Learn more, Memberships starting at \\$2.50/m!](#)

**Follow me
on Twitter!**

@ConvertingColor